

# Vision Update

## Planning Advisory Committee

February 19, 2020

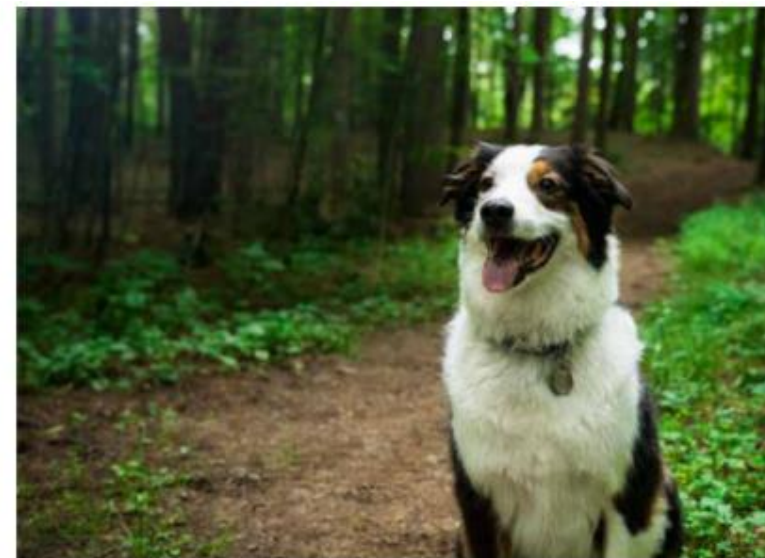
Sarah Cameron, Senior Planner, Long Range Planning

Erinn Jay, Employee Giving and Outreach Advisor, Business  
Services

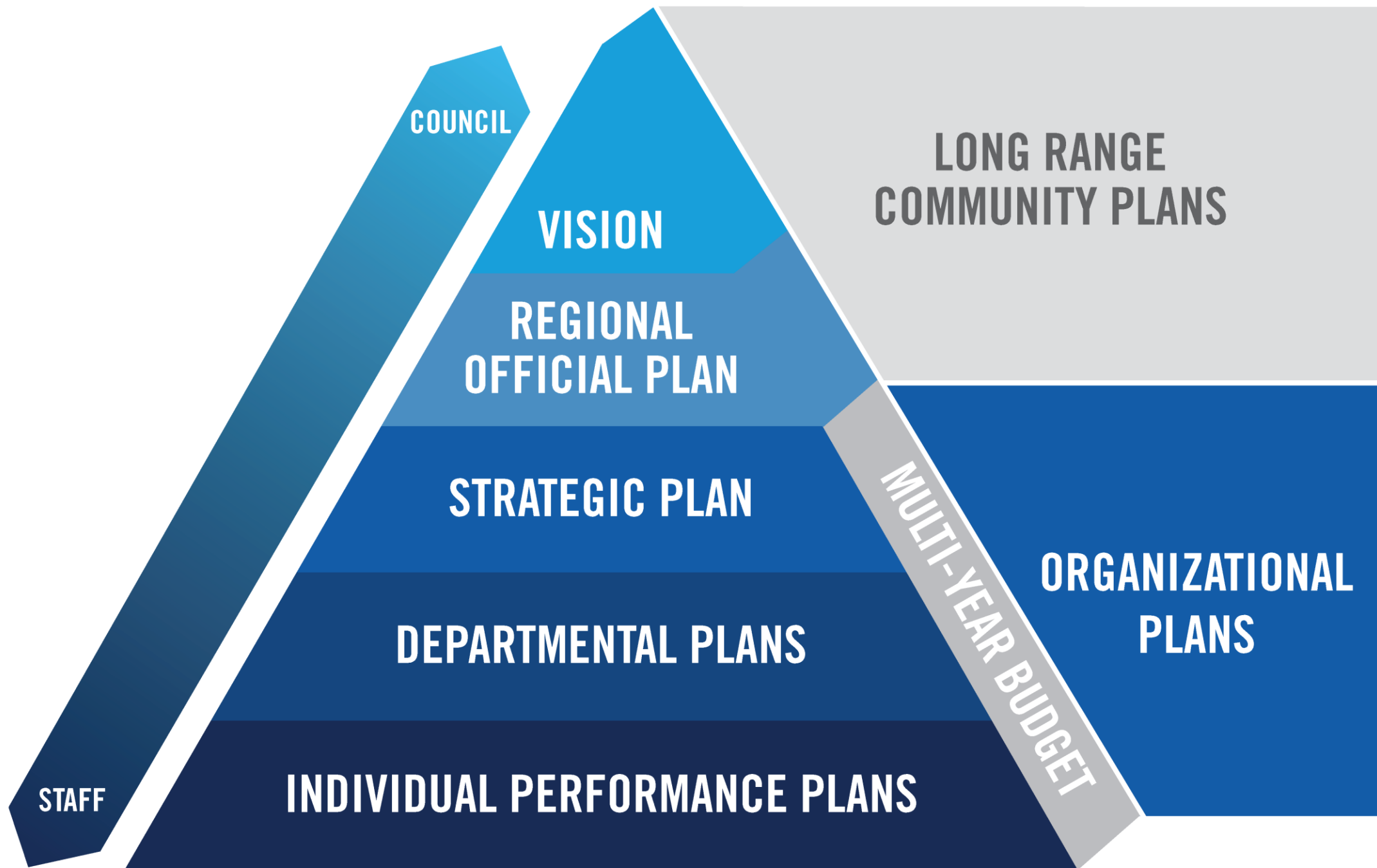


# Outline

- Vision and the Accountability Framework
- Vision 2051
- Vision Update: Objectives
- Your Vision for York Region
- Next Steps





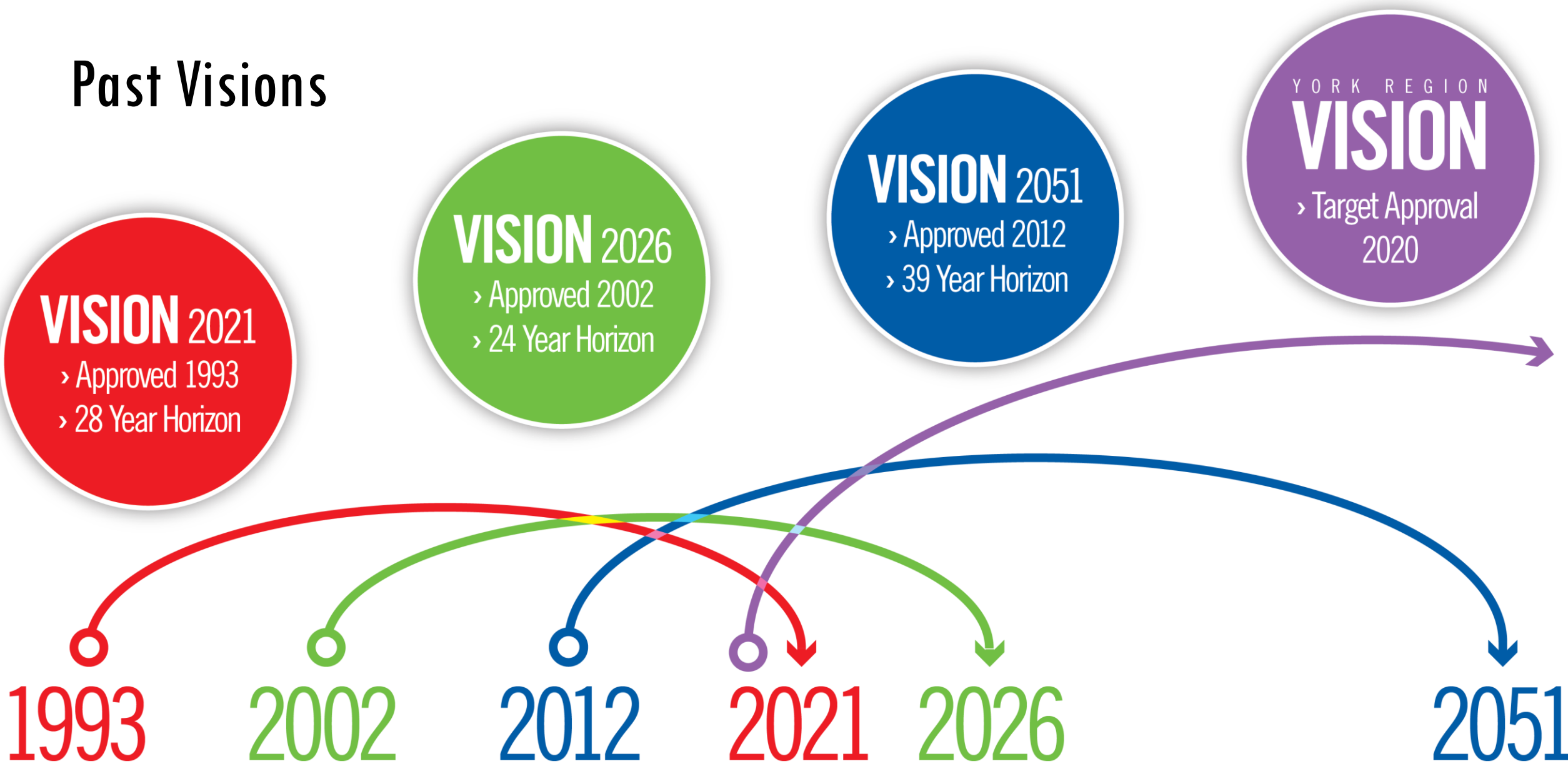


# Vision and the Municipal Comprehensive Review

	REGIONAL OFFICIAL PLAN	VISION
STATUTORY REQUIREMENTS	Yes-approved by Province	No-approved by Council
HORIZON	Prescribed timeframe	Discretionary
PURPOSE	Provides directions and policies that guide economic, environmental and community planning decisions	Establishes the Region's long term vision and sets the foundation for all Regional strategies and initiatives

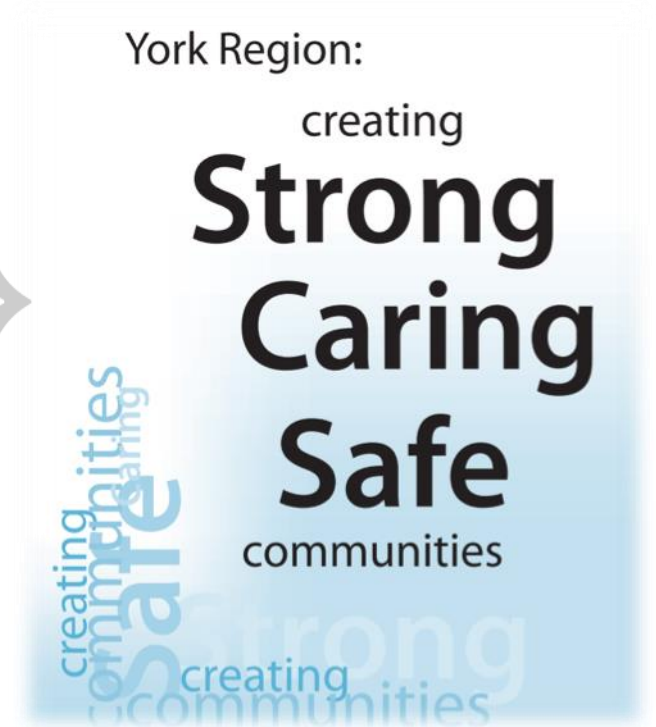
Vision is a made in York statement of how we envision our communities

# Past Visions



# Strong, Caring, Safe Communities

- A place where everyone can thrive
- Livable cities and complete communities
- A resilient natural environment and agricultural system
- Appropriate housing for all ages and stages
- An innovation economy
- Interconnected systems for mobility
- Living sustainably
- Open and responsive governance





# Vision update

**Objective:** Provide a clear and strategically aligned Vision document that all stakeholders can understand, feel connected to and support:

- Remove end date
- Simplify Goals
- Simplify Actions
- Community Indicators



# What is Vision?

- Aspirational
- Statement
- Guide
  
- The longest term goal we have

The Vision Statement of **Strong, Caring, Safe Communities** is an expression of York Region's future

It is YOUR Vision, it has shared ownership, we all inform it

The background is a solid blue color with several large, overlapping, semi-transparent geometric shapes. These shapes include triangles and trapezoids in various shades of blue, creating a layered, abstract effect. The shapes are positioned in a way that they seem to radiate from the center, with some pointing towards the corners and others towards the edges.

**WHY DO WE HAVE VISION?**





**Who does Vision impact?**



The background is a solid blue color with several large, overlapping, semi-transparent geometric shapes. These shapes include triangles and trapezoids in various shades of blue, creating a layered, abstract effect. The shapes are positioned in a way that they seem to radiate from the center, with some pointing towards the corners and others towards the edges.

**WHAT IS YOUR VISION?**

**WHAT ROLE DO YOU PLAY IN YOUR  
COMMUNITY?**



# Public consultations for Vision and the MCR to date

We engaged the public through a number of in person and on-line methods including:

- 'It's Your Pic' contests
- MTSA interactive map
- Walk and Talk session with the Chief Planner
- Newsletters and surveys
- Community agency forum
- Local events, open houses, and other social media campaigns





## What we have heard so far

- Walkable communities with employment opportunities, community facilities, services, stores and places for social connection
- Affordable housing options
- Decreased emissions
- Protection of natural heritage and agricultural lands
- Maintain and enhance public transit options

**October 2019 report provided an update on public consultations for the MCR and Vision**

# Next Steps

- Gather initial feedback
- Draft Vision
- Consult on Draft Vision
- Final Vision

**The Final updated Vision is anticipated for Q4 2020**



# THANK YOU

**Contact:**

Sarah Cameron, Senior Planner, Long Range Planning

[sarah.cameron@york.ca](mailto:sarah.cameron@york.ca)

Ext. 71593

