

PREFERRED ROUTE ANNOUNCEMENT

GTA WEST STUDY



The Greater Toronto Area (GTA) West Transportation Corridor Route Planning and Environmental Assessment Study is focusing on the planning and preliminary design of a new multimodal transportation corridor that includes a 400-series highway, transitway, and potential goods movement priority features. Public Information Centre #2 (PIC #2), held in September/October 2019, presented the draft Technically Preferred Route and draft 2019 Focused Analysis Area for comment.

The draft Technically Preferred Route presented at PIC #2 has been superseded by the Preferred Route. **The Preferred Route** map illustrates the route and interchange locations for the GTA West multimodal transportation corridor that will be developed to a preliminary design level of detail over the next 2 years. The Preferred Route map provides information on where changes have been made to the route based on the consideration of feedback from PIC #2, land use and environmental information.

TIMELINE

WINTER 2019 - SUMMER 2020

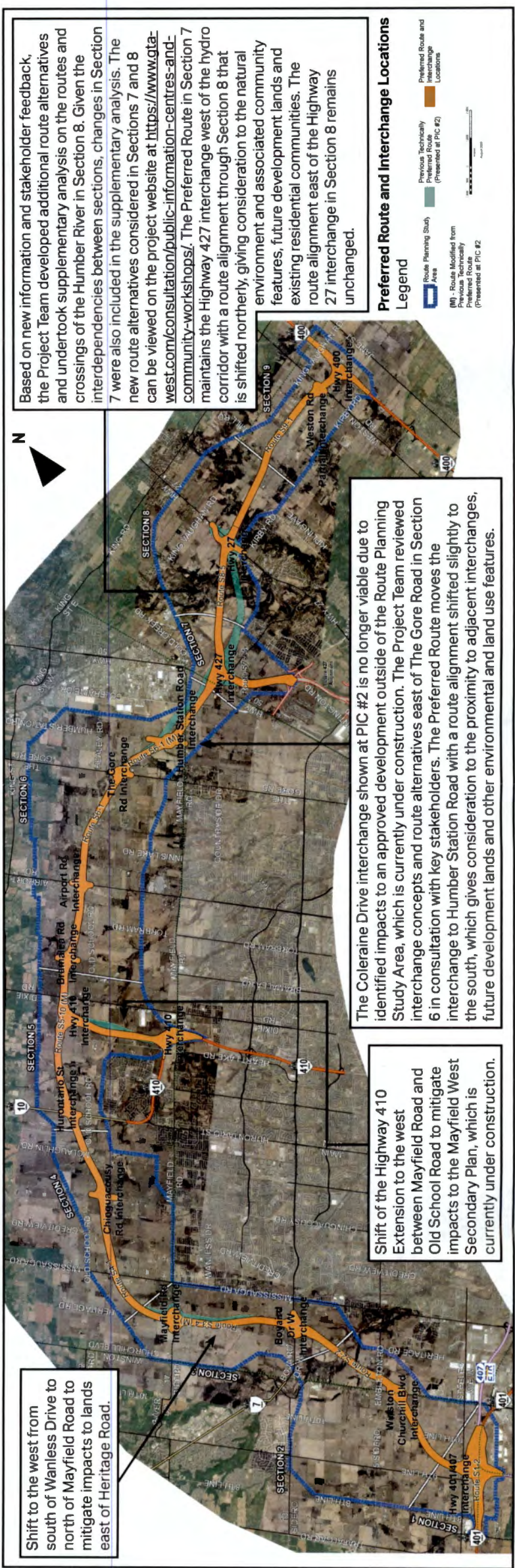
The Project Team reviewed feedback from PIC #2 and worked diligently with advisory groups, municipal staff, agencies and other stakeholders to confirm the Preferred Route and associated 2020 Focused Analysis Area for the GTA West multimodal transportation corridor.

2020 - 2021

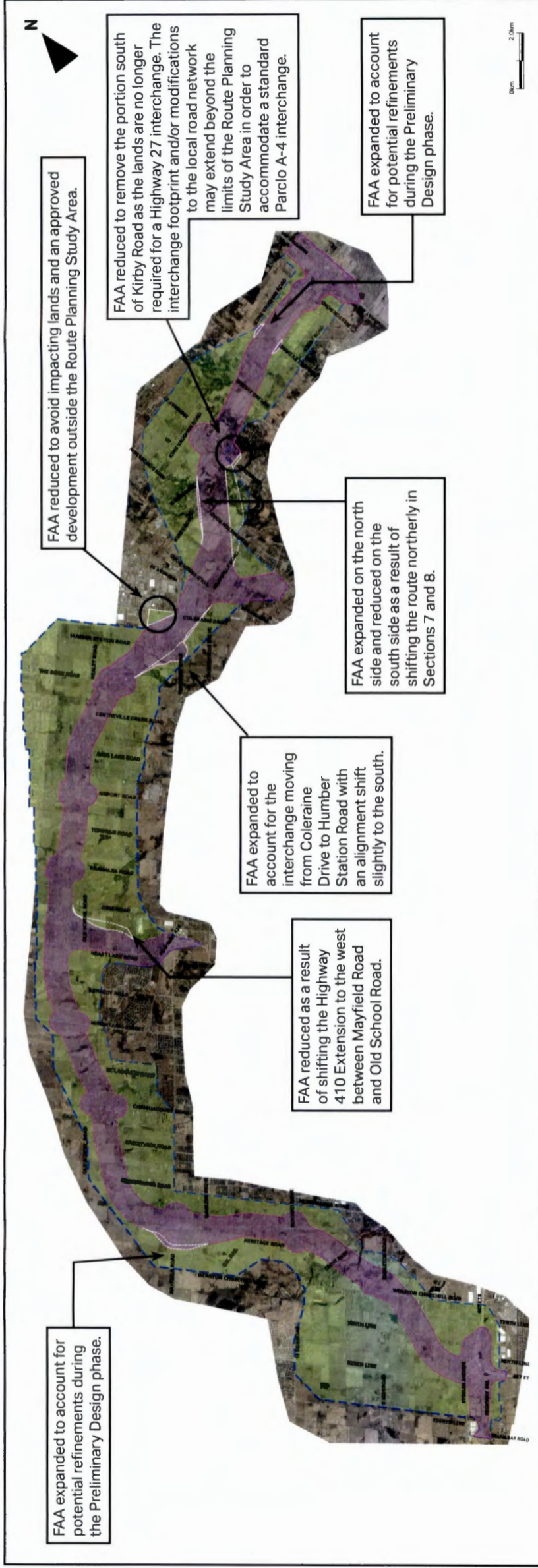
The Project Team will be undertaking fieldwork on properties potentially impacted by the Preferred Route to document existing environmental and engineering conditions.

2020 - 2022

The Project Team will develop the preliminary design of the GTA West multimodal transportation corridor. The Project Team will present the preliminary design, including property impacts and mitigation measures, at PIC #3 for public review and comment. PIC #3 is anticipated to be held in Fall/Winter 2021.



**2020 FOCUSED ANALYSIS AREA (FAA)**



**Purple Area**

The 2019 Focused Analysis Area (FAA) that was presented at PIC #2 was in draft format and has since been refined following a review of feedback and other relevant data. The refined 2020 FAA (**purple area**) is a zone that surrounds the Preferred Route and defines which properties continue to be within an area of interest as the study progresses. Properties located within the 2020 FAA could be directly impacted by the GTA West multimodal transportation corridor, ancillary uses, or if refinements are made to the route during the preliminary design stage.

**More Information**

You can download detailed mapping of the Preferred Route and 2020 FAA from the Public Information Centre #2 section of the project website at [www.gta-west.com/consultation/public-information-centres-and-community-workshops/](http://www.gta-west.com/consultation/public-information-centres-and-community-workshops/). Ce bulletin peut être téléchargé en français sur le site Internet du projet à l'adresse [www.gta-west.com/french/](http://www.gta-west.com/french/). Des renseignements sont disponibles en français en composant (289) 835-2484 (Yannick Garnier).

**Route Planning Study Area - - - - -**

Geographical area within which alternatives for the GTA West multimodal transportation corridor were considered.

[WEBSITE](http://www.gta-west.com)  
[EMAIL](mailto:project_team@gta-west.com)  
[TOLL-FREE](tel:1-877-522-6916)  
[TWITTER](https://twitter.com/GTAWestStudy)

[www.gta-west.com](http://www.gta-west.com)  
[project\\_team@gta-west.com](mailto:project_team@gta-west.com)  
 1-877-522-6916  
[@GTAWestStudy](https://twitter.com/GTAWestStudy)