

York Region Accessibility Advisory Committee

Community Safety and Well-Being

Lisa Alfieri Sladen, Manager, Human Services Strategy and Partnership
Community and Health Services

Joachim Tsui, Program Manager, Human Services Integration
Community and Health Services

September 23, 2020



Overview

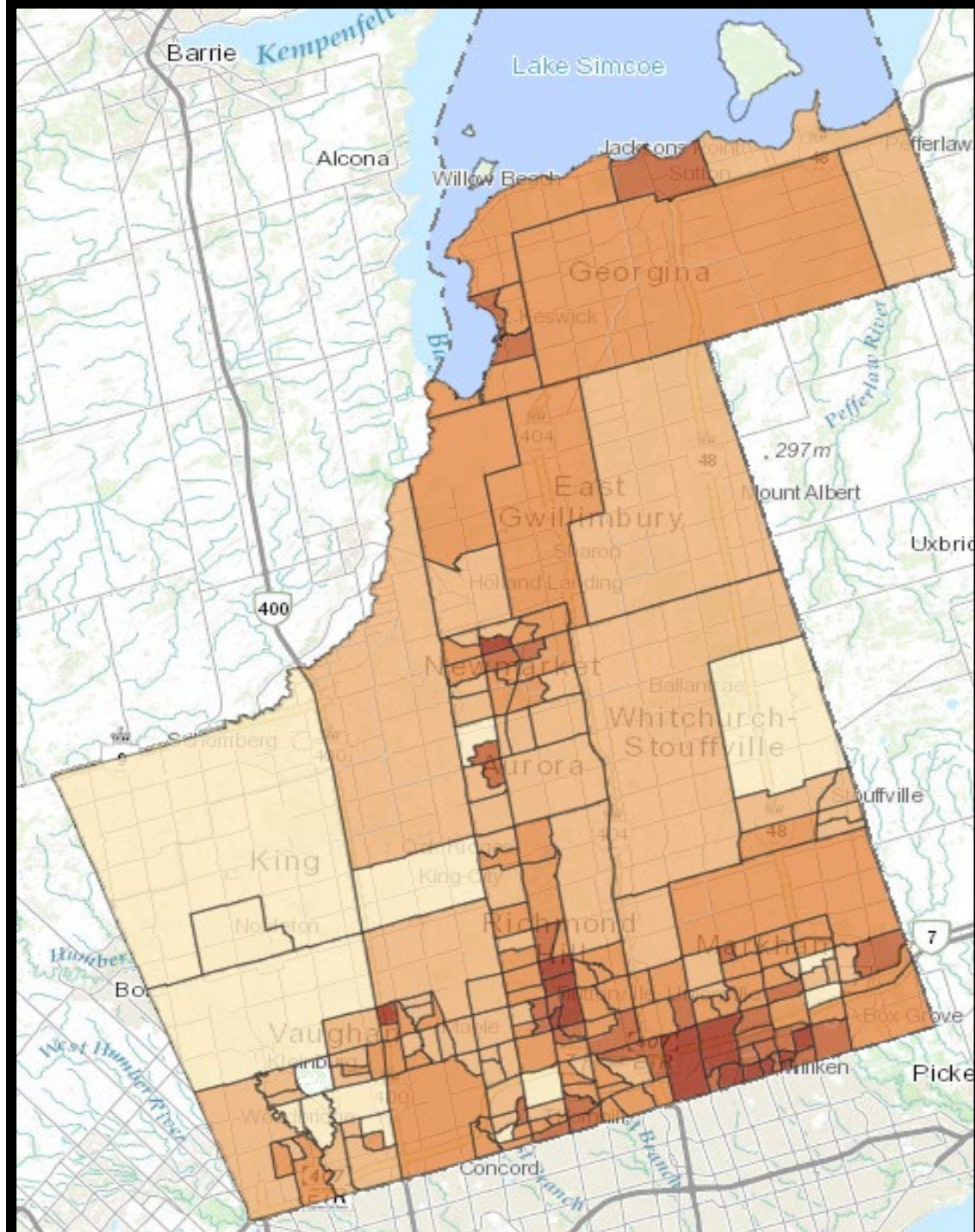
- Community Safety and Well-Being Planning 101
- Laying the groundwork:
 - ✓ Identifying geographic focus areas
 - ✓ Identifying top challenges and risks
 - ✓ Community Engagement
- Next steps

Community Safety and Well-Being Planning 101



Data suggests four areas may benefit most from targeted efforts

- South-Central Markham
- South-Central Richmond Hill
- Central Newmarket
- Northern Georgina



Elgin Mills Road

Elgin Mills

Bayview Avenue

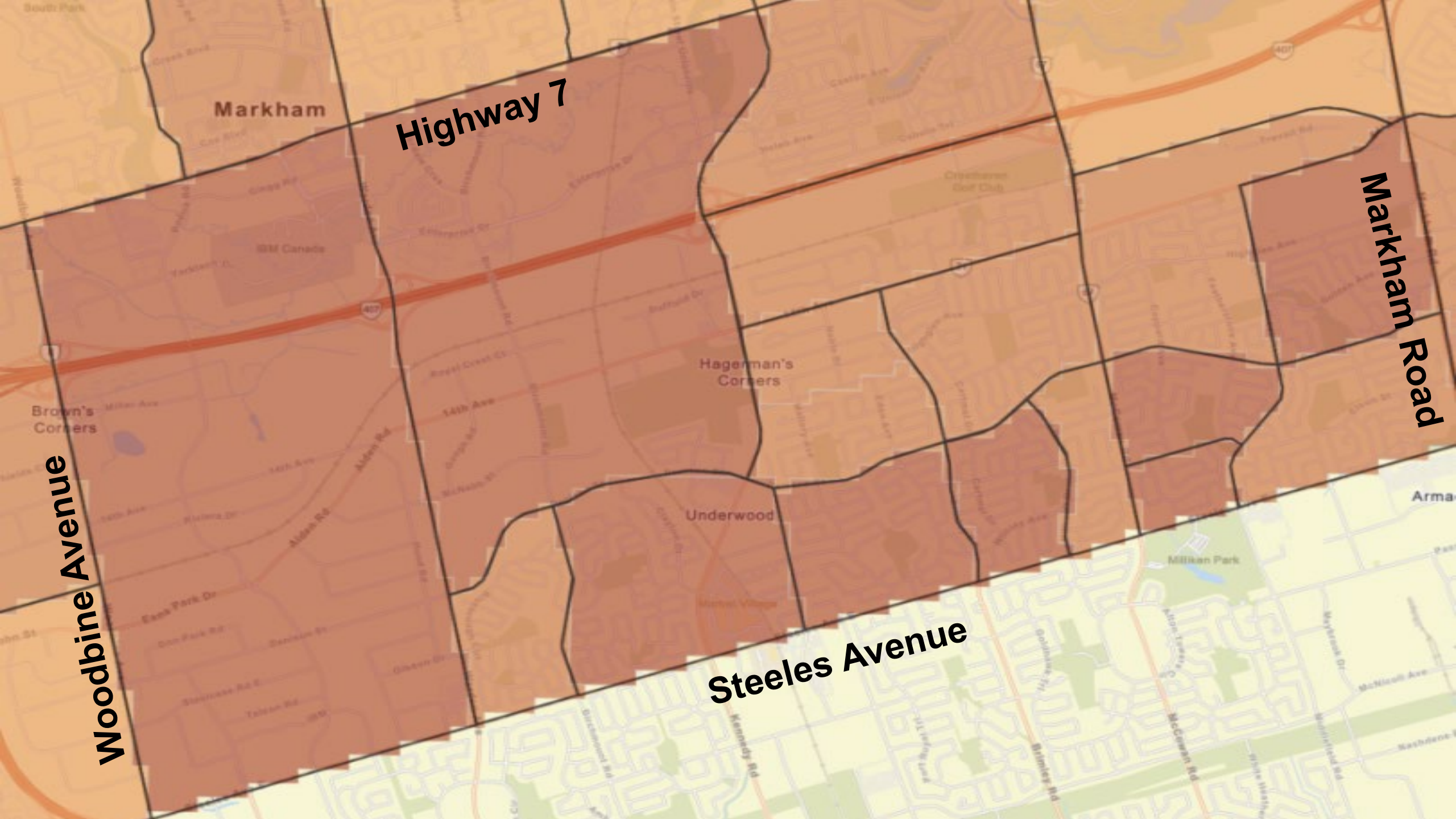
Yonge Street

Town Park

Beverley Acres

Yongehurst

16th Avenue



Highway 7

Markham Road

Woodbine Avenue

Steeles Avenue

Markham

Hagerman's Corners

Underwood

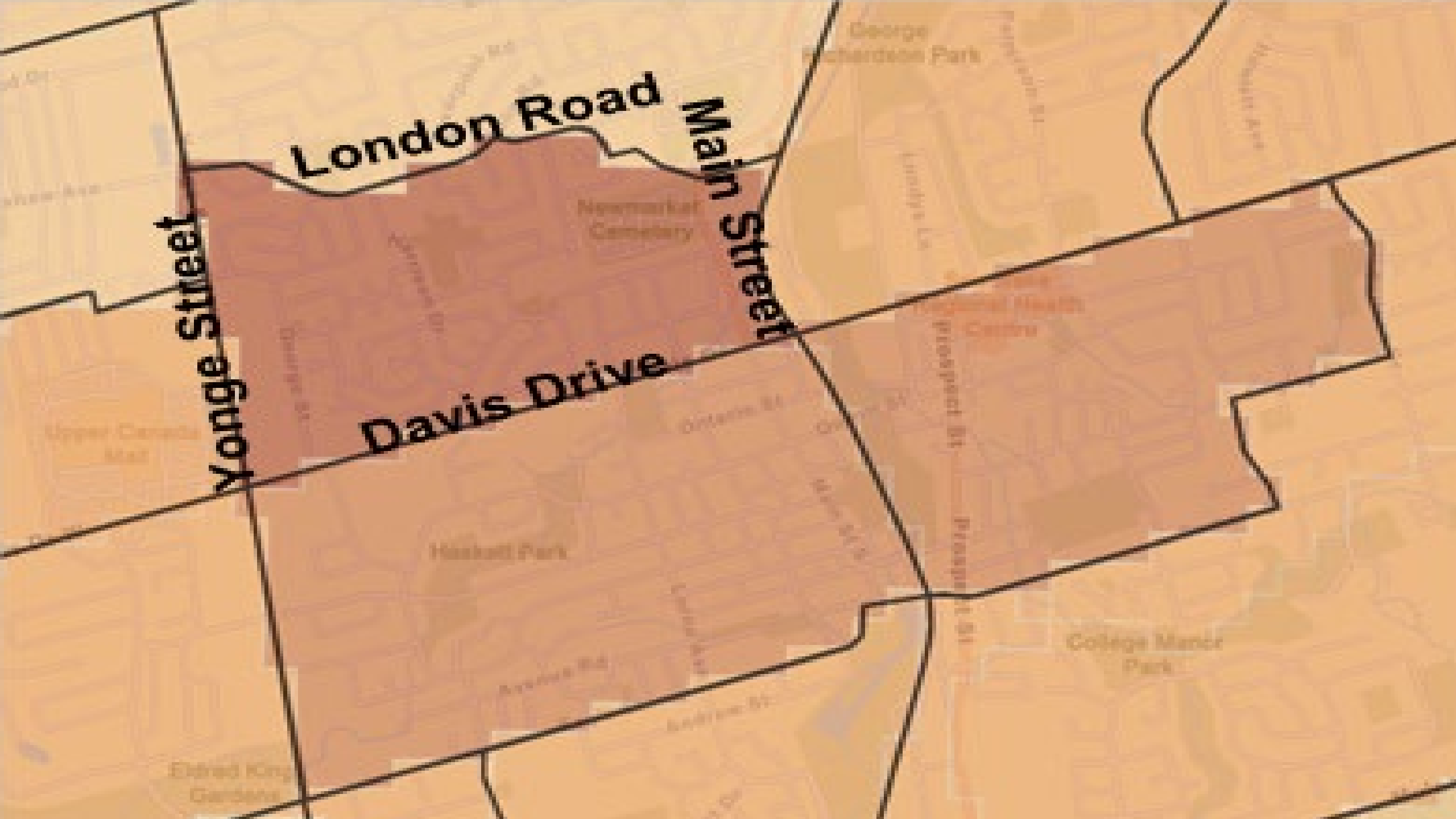
Markham Village

IBM Canada

Brown's Corners

Milliken Park

Arma



London Road

Main Street

Yonge Street

Davis Drive

Newmarket Cemetery

Hickett Park

Avenue Rd

Elfrid King Gardens

George Richardson Park

College Manor Park

Upper Canada Mall

St. Michael's Hospital

Ontario St

Prospect St

Prospect St

Andrew St

Lundy's Ln

Ontario St



Jacksons Point

Mossington
Park

Park Road

Black River Rd

Sutton West

Highway 48

ach
Kennedy Rd

Top risk categories affecting the focus areas

Risk Category	Examples
Alcohol/Substance Misuse	Addiction, overdoses
Crime	Being a victim of crime, criminal involvement, gangs
Discrimination	Prejudiced attitudes/actions, hate crimes
Education & Development	Low education, barriers to healthy development
Employment & Income	Unemployment, having low income
Housing Stability	Unaffordable, inadequate housing
Mental Health	Extreme life stress and poor mental health
Physical Health	Unhealthy lifestyle and chronic illnesses
Social Isolation	Lack of community connections, language barriers
Food Security	Unreliable access to enough affordable, nutritious food
Violence & Abuse	Domestic violence, child abuse and neglect

Community Engagement

- As a result of COVID-19, we revised the engagement plan from in-person sessions to new two part approach:
 - Part 1: Identify and confirm risks in focus areas (survey and virtual engagement)
 - Part 2: Identify and confirm strategies and initiatives to reduce risks (virtual engagement)

*Preliminary Survey Results

(*as of September 11, 2020 and may be subject to change)

- 391 total responses – 188 (48%) from Community Organizations, 203 (52%) from clients and residents

Preliminary Survey Results: Top 3 Risks by # of selections	
Clients/Residents	Overall
1. Mental Health	1. Mental Health
2. Employment and Income	2. Housing Stability
3. Alcohol and Substance Misuse 3. Housing Stability	3. Employment and Income

- 91% of clients/residents identified their overall well-being and quality of life as average, good or very good; less than 10% identified as poor
- 91% of clients/residents said they felt safe in the community; 3% said they felt very unsafe
- Just over 70% of clients/residents said they can access the services/programs that they need
- Awareness of services was the top common response to what can help access programs/services

***Preliminary Survey Results — Risks Identified by Clients/Residents in or around Focus Areas**

Top Risks	Georgina	Markham	Newmarket	Richmond Hill	Total
Alcohol and Substance Misuse	✓		✓		2
Crime	✓			✓	2
Discrimination	✓	✓	✓		3
Employment and Income		✓	✓	✓	3
Mental Health	✓	✓		✓	3

(*as of September 11, 2020 and may be subject to change)

Existing programs and services can be leveraged as strategies to reduce risks

Risk Category	Specific Risk & Focus Area	Possible Existing Strategy to Explore
Social Isolation	Social isolation of seniors in South-Central Markham	<p>CHATS Social and Well-Being Programs</p> <ul style="list-style-type: none">• Activities such as coffee clubs, wellness programs, fitness groups <p>York Region Seniors Strategy</p> <ul style="list-style-type: none">• Explore ways to guide seniors through available services (system navigation) <p>Centre for Immigrant and Community Services</p> <ul style="list-style-type: none">• Awareness campaign for existing language classes and wellness workshops

Questions to consider

- What do you see as specific risks in each of the top risk categories?

Top Risks	Georgina	Markham	Newmarket	Richmond Hill	Total
Alcohol and Substance Misuse	✓		✓		2
Crime	✓			✓	2
Discrimination	✓	✓	✓		3
Employment and Income		✓	✓	✓	3
Mental Health	✓	✓		✓	3

Questions to consider

- What do you see as the top risks in each of the identified focus areas?
- South-Central Markham
- South-Central Richmond Hill
- Central Newmarket
- Northern Georgina

Next Steps

- Complete Part 1 – Deeper dive to confirm top 1-2 risks in each focus areas
- Begin Part 2 - Develop list of potential strategies to reduce top risks and consult part 1 participants
- Write the Plan
- Submit Plan to Regional Council for approval – To be determined pending extended deadline from Province

Questions?



THANK YOU

Lisa Alfieri Sladen, Manager, Human Services Strategy and Partnership

Lisa.AlfieriSladen@york.ca

Joachim Tsui, Program Manager, Human Services Integration

Joachim.Tsui@york.ca

