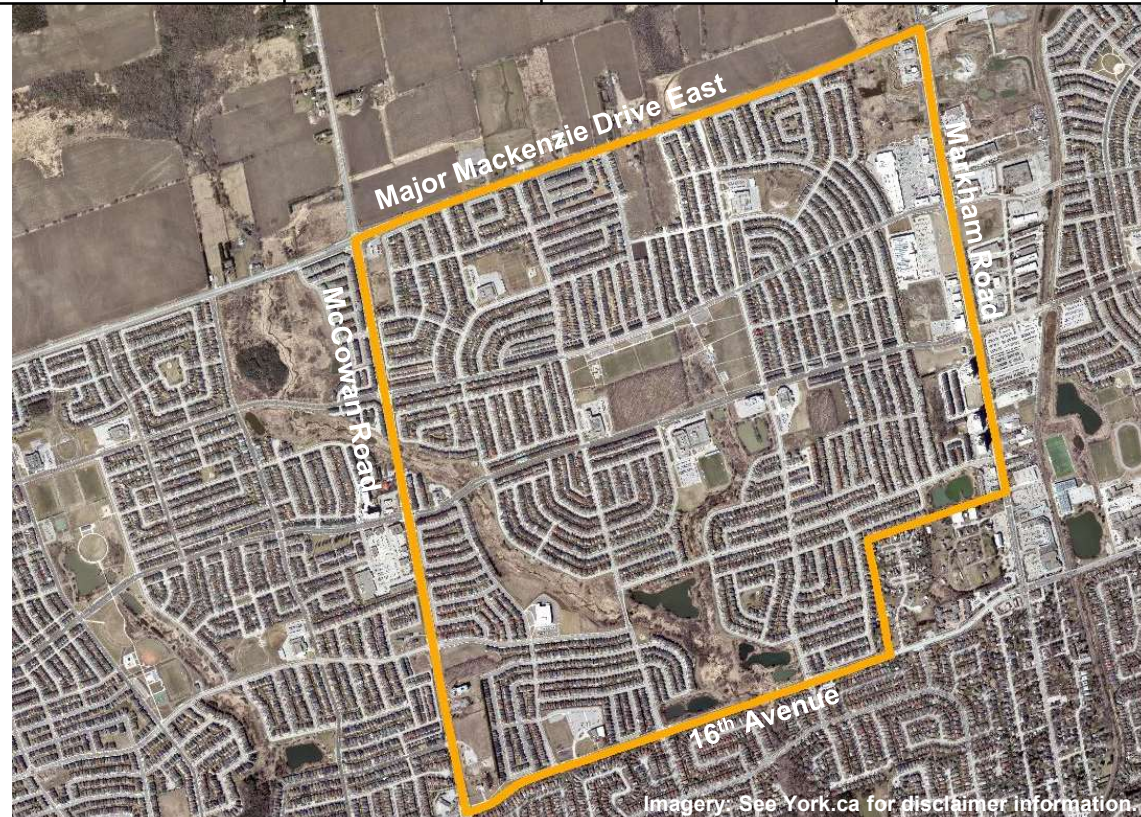
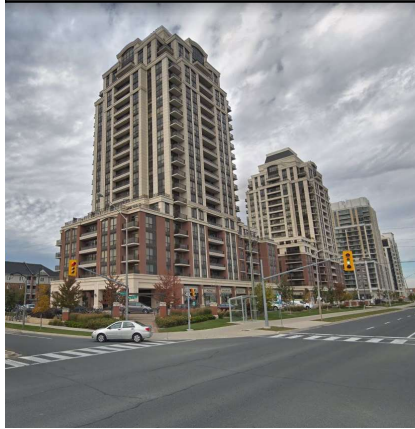


# WISMER COMMONS CITY OF MARKHAM

	Residents	Jobs	Hectares	Density
<b>2016</b>	21,140	2,040	348	67
<b>Buildout</b>	25,740	2,700	376	76

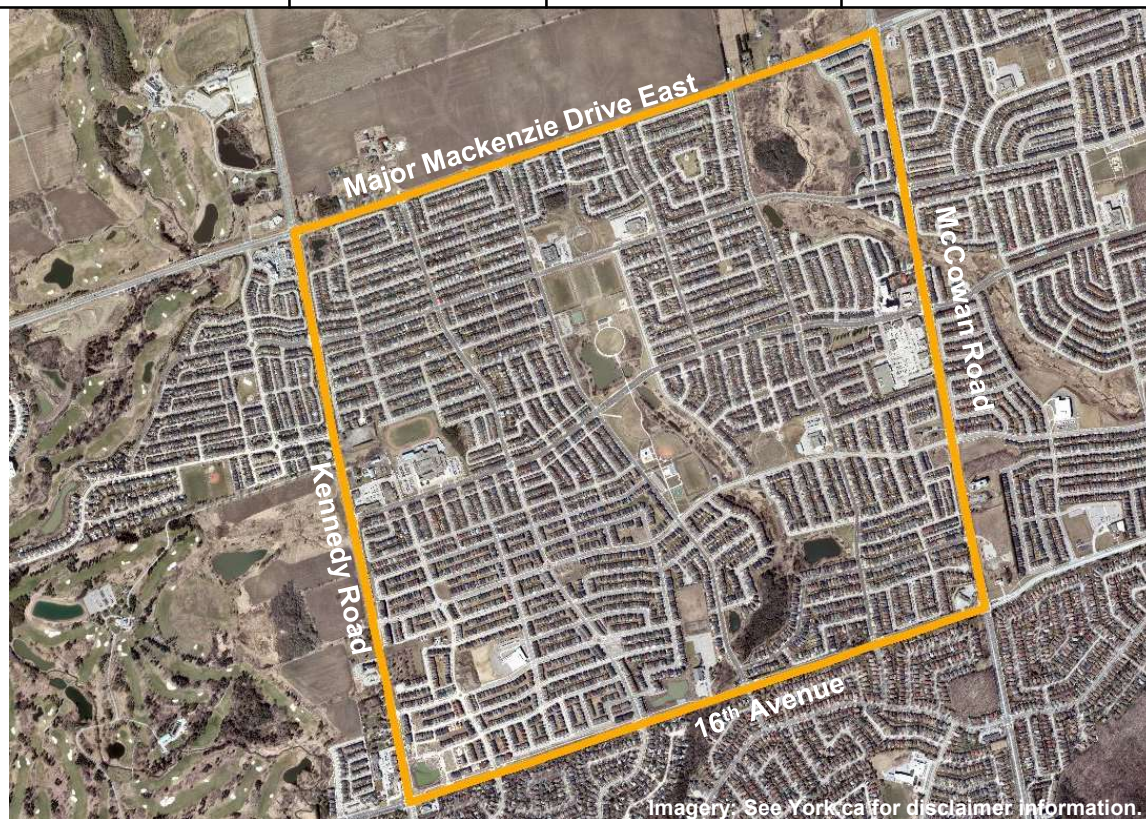


Development Begins	Early 2000s			
Housing Mix at Buildout	Singles	Semi-Detached	Rows	Apartments
	47%	16%	21%	16%
Parks	36 Ha (10% of developable area)			
Commercial and Office	18 Ha (5% of developable area)			
Schools and Child Care	6 schools, 6 child care centres			
Places of Worship	3			
Transit	54 YRT stations, close proximity to GO station			
Trails	9 km			
Bicycle Paths	14 km			

All figures have been rounded.  
Neighbourhood images © Google Earth



	Residents	Jobs	Hectares	Density
2016	23,300	1,940	387	65
Buildout	24,780	2,140	399	67



Development Begins	Late 1990s			
Housing Mix at Buildout	Singles	Semi-Detached	Rows	Apartments
	58%	12%	26%	4%
Parks	36 Ha (9% of developable area)			
Commercial and Office	8 Ha (2% of developable area)			
Schools and Child Care	6 schools, 7 child care centres			
Places of Worship	1			
Transit	71 YRT stations			
Trails	10 km			
Bicycle Paths	15 km			

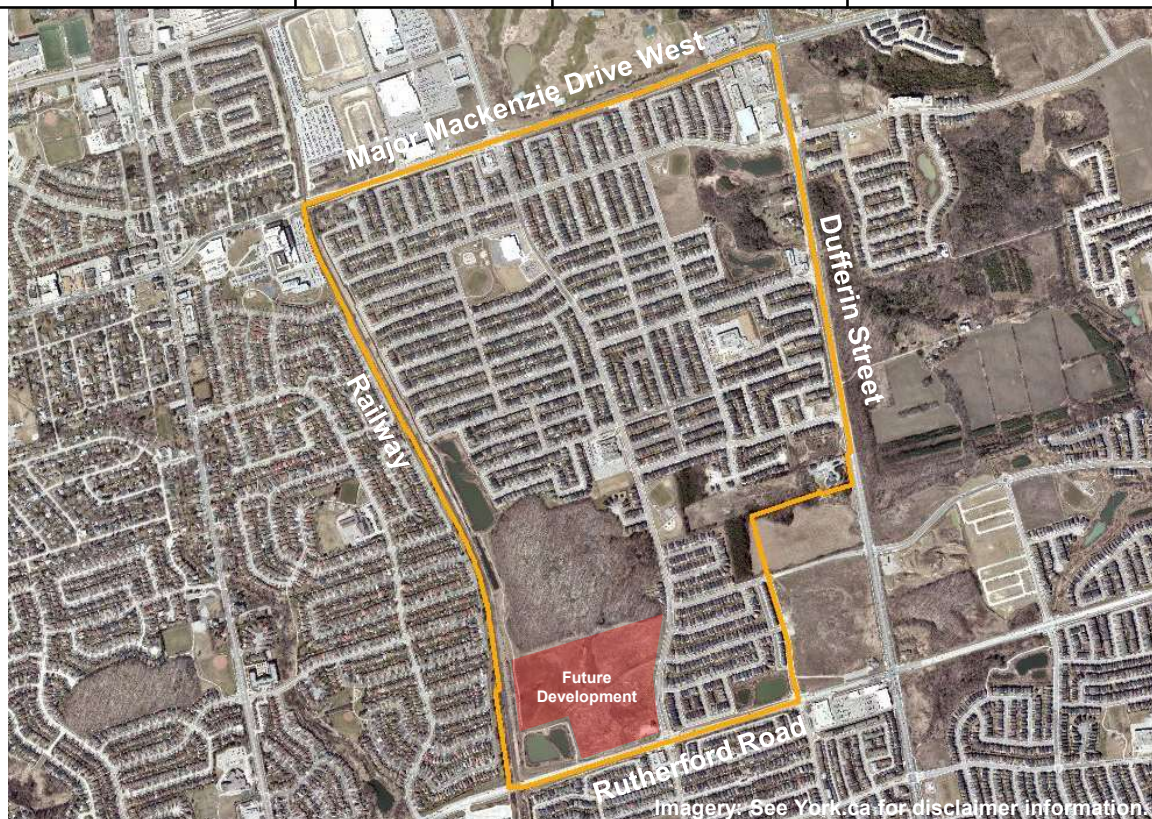
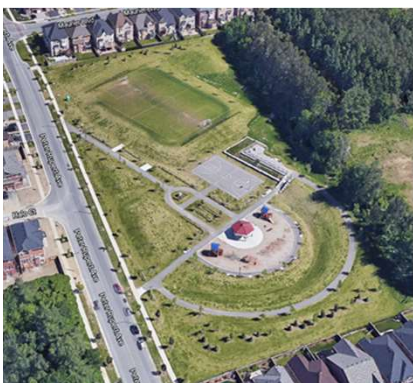
All figures have been rounded.  
Neighbourhood images © Google Earth



# BLOCK 18

## CITY OF VAUGHAN

	Residents	Jobs	Hectares	Density
2016	11,470	910	192	64
Buildout	12,370	1,190	213	64



Development Begins	Mid 2000s			
Housing Mix at Buildout	Singles	Semi-Detached	Rows	Apartments
	68%	17%	15%	0%
Parks	8 Ha (4% of Developable area)			
Commercial and Office	5 Ha (3% of Developable area)			
Schools and Child Care	3 schools, 4 child care centres			
Places of Worship	1			
Transit	18 YRT stations, close proximity to GO station			
Trails	1 km			
Bicycle Paths	8 km			

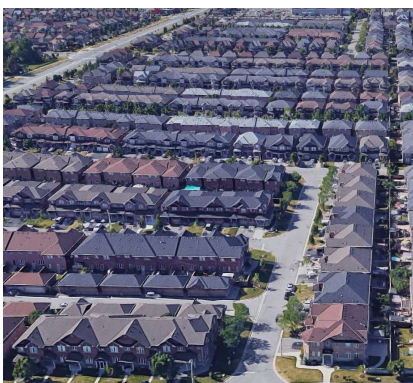
All figures have been rounded.  
Neighbourhood images © Google Earth



# BLOCK 39

## CITY OF VAUGHAN

	Residents	Jobs	Hectares	Density
2016	21,200	2,140	363	64
Buildout	22,780	2,500	370	68



Development Begins	Early 2000s			
Housing Mix at Buildout	Singles	Semi-Detached	Rows	Apartments
	62%	16%	16%	6%
Parks	19 Ha (5% of Developable area)			
Commercial and Office	5 Ha (1% of Developable area)			
Schools and Child Care	6 schools, 6 child care centres			
Places of Worship	1			
Community Centre	1			
Library	1			
Transit	62 YRT stations			
Bicycle Paths	17 km			

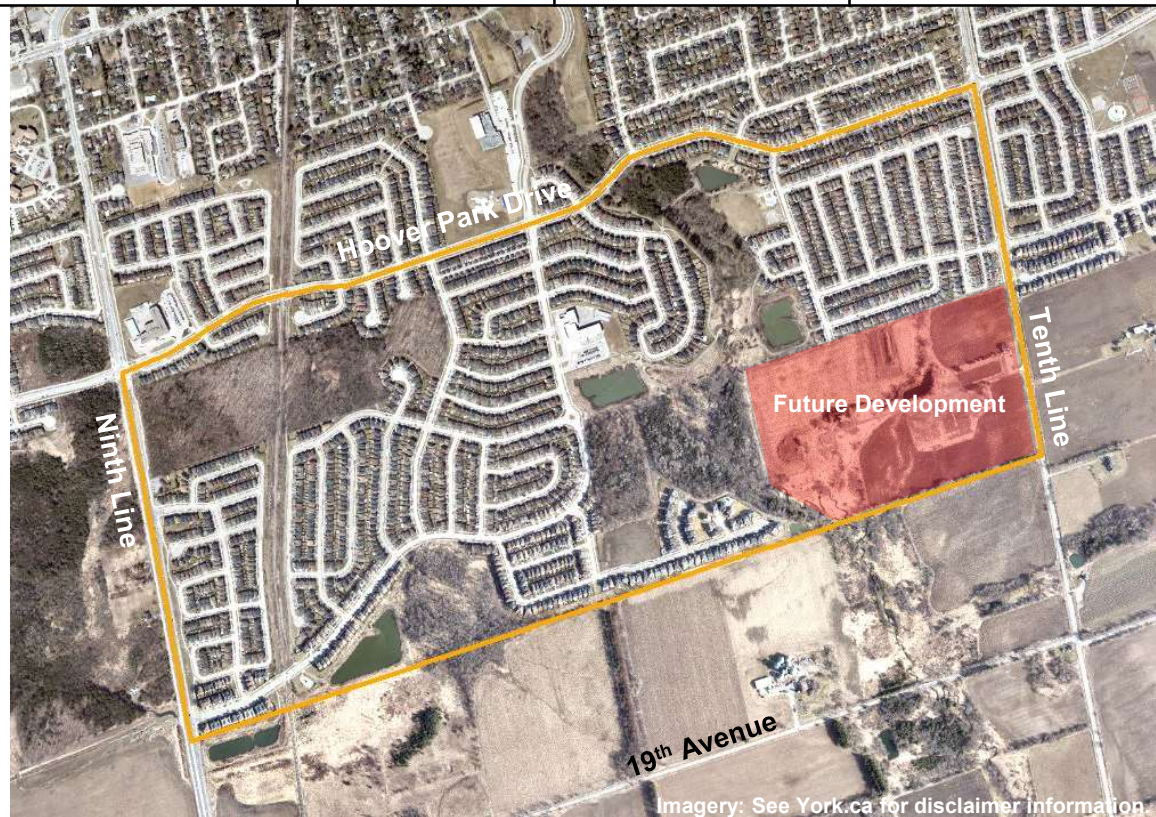
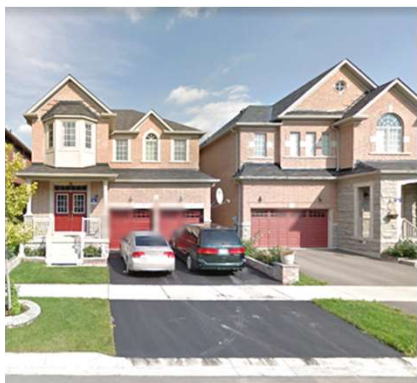
All figures have been rounded.  
Neighbourhood images © Google Earth



# STOUFFVILLE SOUTHCENTRAL

TOWN OF WHITCHURCH-STOUFFVILLE

	Residents	Jobs	Hectares	Density
2016	7,670	390	111	72
Buildout	8,740	530	134	69



Development Begins	Mid 2000s			
Housing Mix at Buildout	Singles	Semi-Detached	Rows	Apartments
	63%	21%	16%	0%
Parks	3 Ha (2% of developable area)			
Commercial and Office	none			
Schools and Child Care	1 school, 1 child care centre			
Transit	19 YRT stations			
Trails	6 km			
Bicycle Paths	14 km			

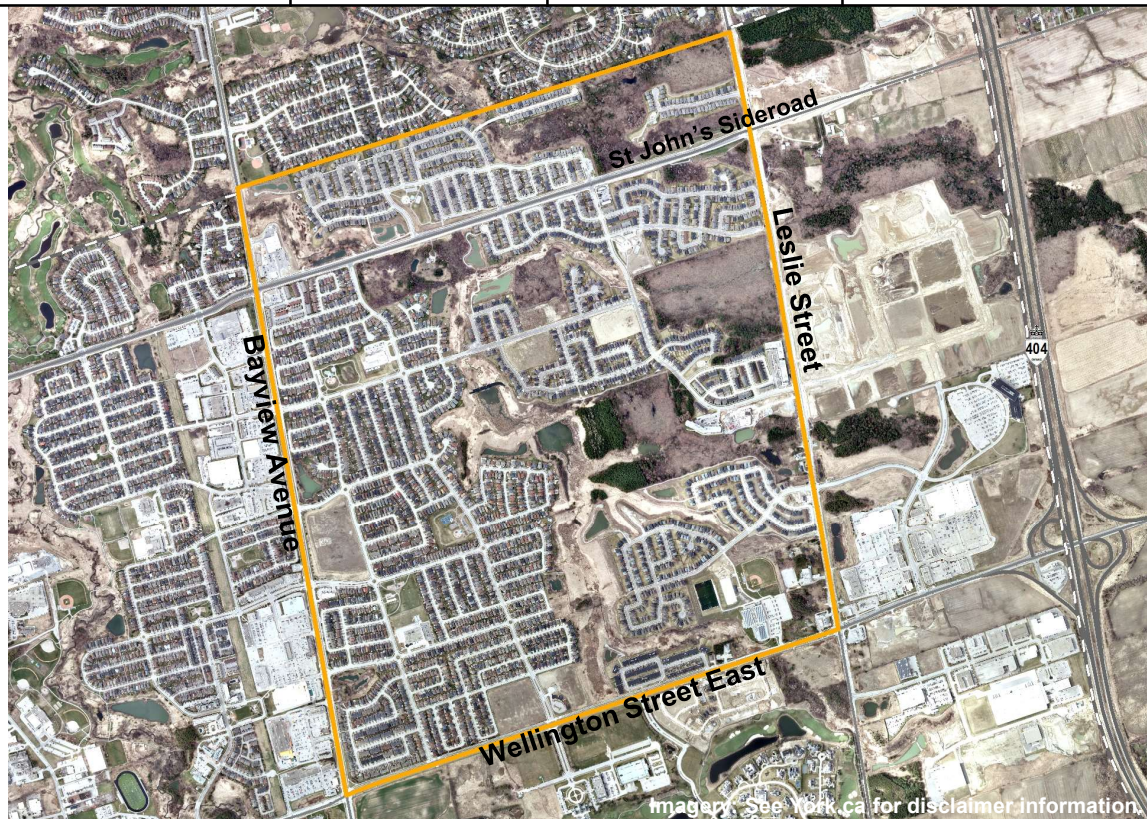
All figures have been rounded.  
Neighbourhood images © Google Earth



# AURORA 2B AND 2C

## TOWN OF AURORA

	Residents	Jobs	Hectares	Density
<b>2016</b>	10,870	820	217	54
<b>Buildout</b>	19,310	1,800	362	58



Development Begins	Early 2000s, and Mid 2010s			
Housing Mix at Buildout	Singles	Semi-Detached	Rows	Apartments
	52%	6%	26%	16%
Parks	13 Ha (6% of developable area)			
Commercial and Office	4 Ha (2% of developable area)			
Schools and Child Care	2 schools, 3 child care centres			
Places of Worship	1			
Community Centre	1			
Transit	39 YRT stations			
Trails and Bicycle Paths	12 km trails and 23 km bicycle paths			

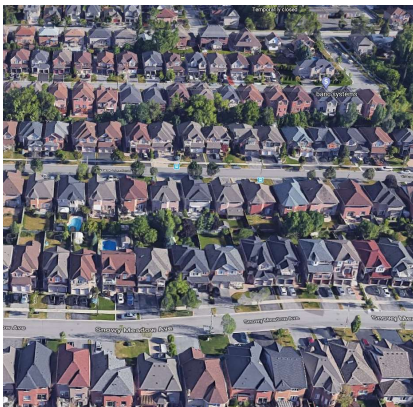
All figures have been rounded.  
Neighbourhood images © Google Earth



# OAK RIDGES

## CITY OF RICHMOND HILL

	Residents	Jobs	Hectares	Density
2016	13,850	1,290	255	59
Buildout	15,470	1,750	267	64



Development Begins	Early 2000s			
Housing Mix at Buildout	Singles	Semi-Detached	Rows	Apartments
	61%	5%	27%	7%
Parks	11 Ha (4% of Developable area)			
Commercial and Office	10 Ha (4% of Developable area)			
Schools and Child Care	5 schools, 4 child care centres			
Places of Worship	2			
Transit	50 YRT stations			
Trails	11 km			
Bicycle Paths	15 km			

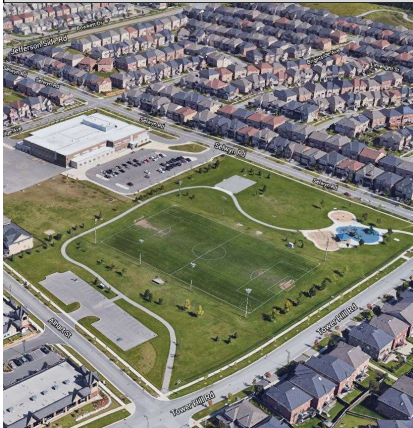
All figures have been rounded.  
Neighbourhood images © Google Earth



# JEFFERSON SIDEROAD

CITY OF RICHMOND HILL

	Residents	Jobs	Hectares	Density
<b>2016</b>	8,840	640	175	54
<b>Buildout</b>	8,910	730	180	54



Development Begins	Mid 2000s			
Housing Mix at Buildout	Singles	Semi-Detached	Rows	Apartments
	78%	0%	22%	0%
Parks	10 Ha (6% of developable area)			
Commercial and Office	3 Ha (2% of developable area)			
Schools and Child Care	3 schools, 4 child care centres			
Transit	34 YRT stations			
Trails	9 km			
Bicycle Paths	5 km			

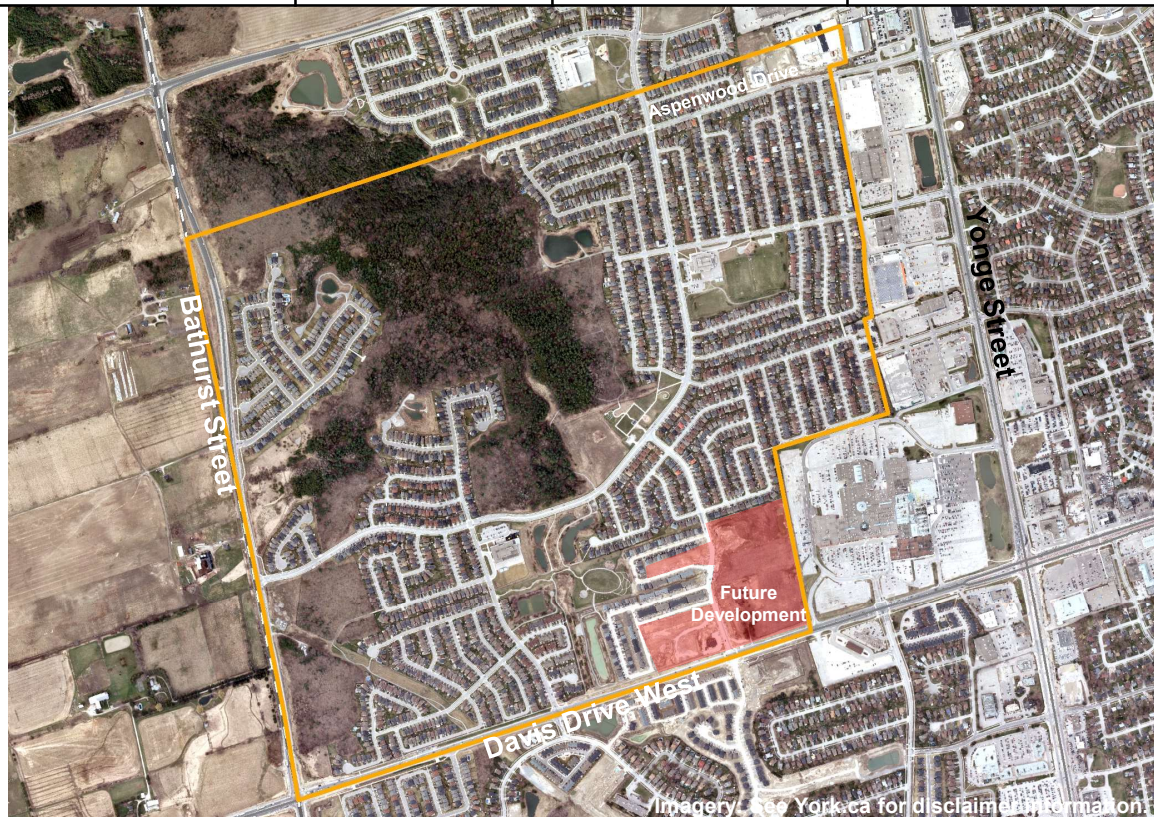
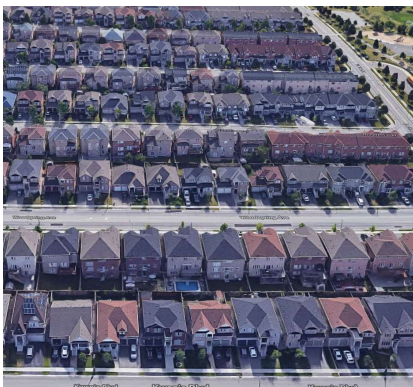
All figures have been rounded.  
Neighbourhood images © Google Earth



# NEWMARKET NORTHWEST

## TOWN OF NEWMARKET

	Residents	Jobs	Hectares	Density
2016	9,550	530	149	71
Buildout	12,230	770	189	69



Development Begins	Early 2000s			
Housing Mix at Buildout	Singles	Semi-Detached	Rows	Apartments
	56%	13%	30%	1%
Parks	6 Ha (4% of developable area)			
Commercial and Office	<1 Ha, close proximity to commercial along Yonge Street			
Schools and Child Care	2 schools, 3 child care centres			
Transit	21 YRT stations, close proximity to GO bus terminal			
Trails	8 km			
Bicycle Paths	9 km			

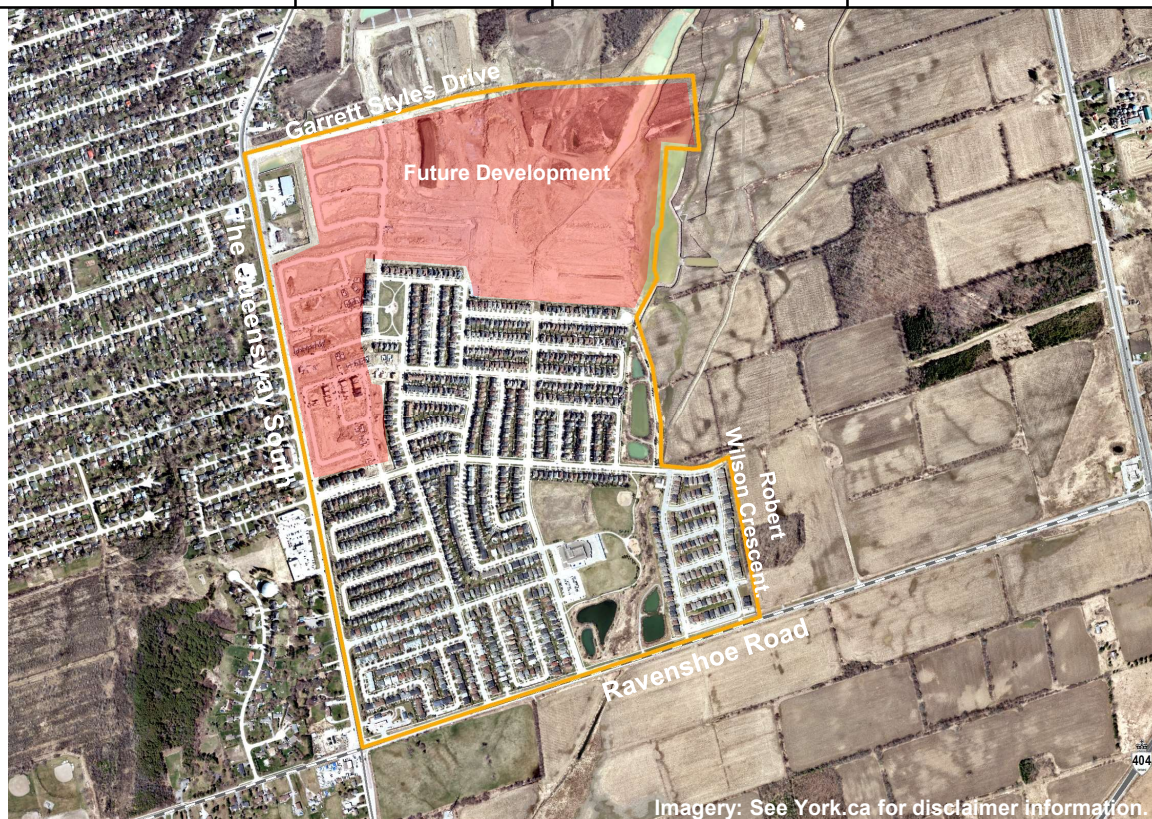
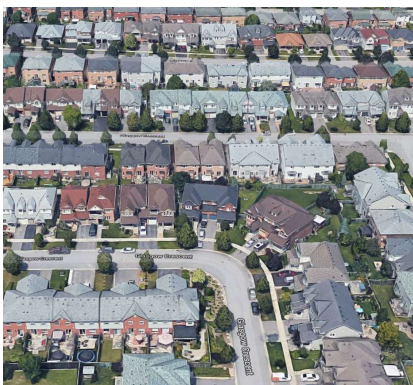
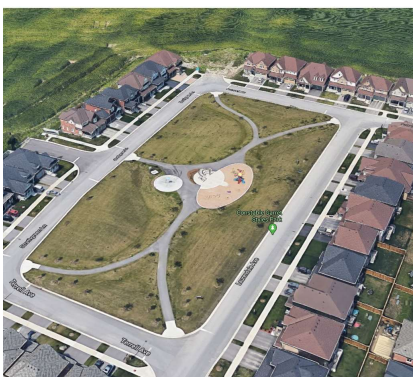
All figures have been rounded.  
Neighbourhood images © Google Earth



# SOUTH KESWICK

## TOWN OF GEORGINA

	Residents	Jobs	Hectares	Density
<b>2016</b>	3,810	250	76	53
<b>Buildout</b>	6,780	450	134	54



Development Begins	Early 2000s			
Housing Mix at Buildout	Singles	Semi-Detached	Rows	Apartments
	79%	8%	13%	0%
Parks	8 Ha (10% of developable area)			
Commercial and Office	2 Ha (2% of developable area)			
Schools and Child Care	1 school, 1 child care centre			
Transit	14 YRT stations			
Trails	3 km			
Bicycle Paths	3 km			

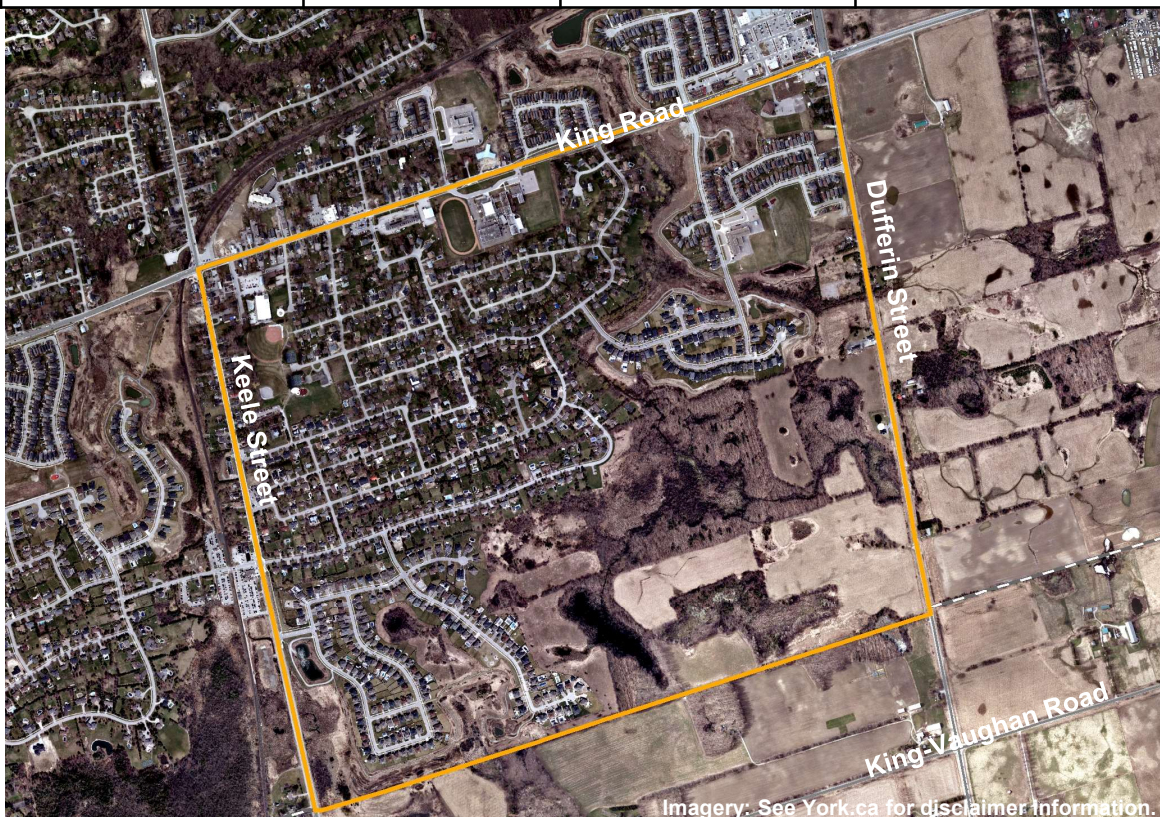
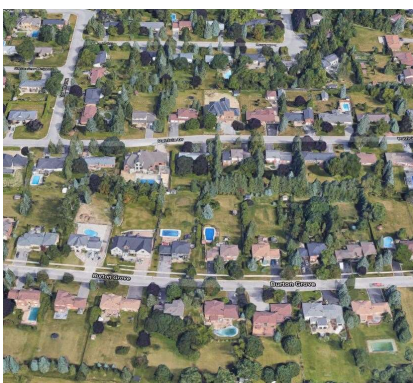
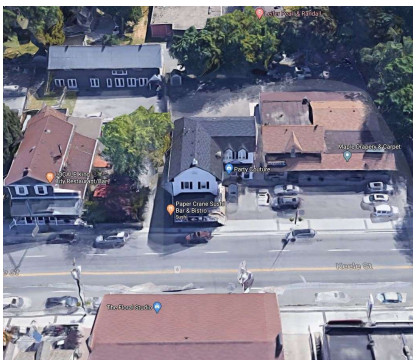
All figures have been rounded.  
Neighbourhood images © Google Earth



# KING CITY SOUTHEAST

TOWNSHIP OF KING

	Residents	Jobs	Hectares	Density
<b>2016</b>	2,620	610	167	19
<b>Buildout</b>	3,260	610	205	19



Development Begins	Historic areas followed by early 2010s			
Housing Mix at Buildout	Singles	Semi-Detached	Rows	Apartments
	95%	0%	4%	1%
Parks	8 Ha (5% of developable area)			
Commercial and Office	4 Ha (2% of developable area)			
Schools and Child Care	2 schools, 2 child care centres			
Places of Worship	5			
Community Centre	1			
Transit	10 YRT stations, close proximity to GO station			
Trails	3 km			
Bicycle Paths	3 km			

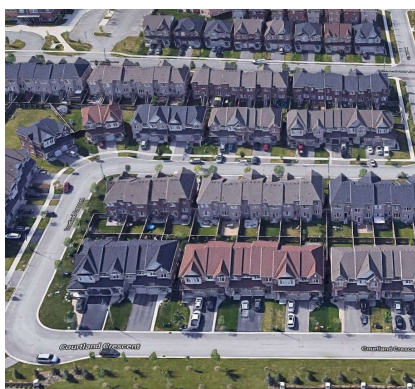
All figures have been rounded.  
Neighbourhood images © Google Earth



# GREEN LANE

## TOWN OF EAST GWILLIMBURY

	Residents	Jobs	Hectares	Density
<b>2016</b>	2,190	1,210	62	55
<b>Buildout</b>	2,190	1,190	68	50



Development Begins	Late 2000s			
Housing Mix at Buildout	Singles	Semi-Detached	Rows	Apartments
	47%	21%	32%	0%
Parks	6 Ha (10% of developable area)			
Commercial and Office	17 Ha (28% of developable area)			
Schools and Child Care	1 school, 1 child care centre			
Community Centre	1			
Transit	10 YRT stations			
Trails	7 km			
Bicycle Paths	5 km			

All figures have been rounded.  
Neighbourhood images © Google Earth