

Natural Systems Planning

Agriculture and Agri-Food Advisory Committee

January 27, 2021

Jelena Baker, Senior Planner, Long Range Planning

Jelena.Baker@York.ca

Chhavi Narula, Planner, Long Range Planning

Chhavi.Narula@York.ca



1. Update of Regional Official Plan Process and Timelines & Work Completed to Date
2. Regional Greenlands System
3. Conformity Gaps
4. Policy and Mapping Considerations
5. Questions & Discussion

Update on Regional Official Plan Process

Targeted Regional Official Plan Schedule

| Q1 2021 | Q2 – Q3 2021 | Q4 2021 | Q2 2022 |
|--|-------------------|------------------------------|---|
| <ul style="list-style-type: none">• Housing Policy Directions Report• Council Education Session• Policy Directions Report #2• Draft Forecast and Land Needs Assessment to Council | MCR Update Report | Draft Regional Official Plan | Anticipated Regional Official Plan Adoption |

Ongoing engagement with internal and external stakeholders

Natural Systems Planning: Work To Date

Work To date



WORKSHOPS AND MEETINGS
WITH LOCAL MUNICIPALITIES
AND CONSERVATION
AUTHORITIES



INTERNAL SUBJECT MATTER
EXPERT MEETINGS



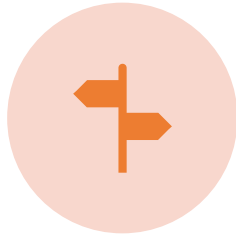
DATA COLLECTION AND
MAPPING REFINEMENTS



NATURAL SYSTEMS PLANNING
BACKGROUND REPORT (JUNE
2020)



AGRICULTURE/NHS ONLINE
CAMPAIGN



ROP POLICY DIRECTIONS
REPORT

Ongoing



REVIEWING ONLINE
PUBLIC CONSULTATION
COMMENTS



DRAFT POLICIES AND
DRAFT MAP

Regional Greenlands System

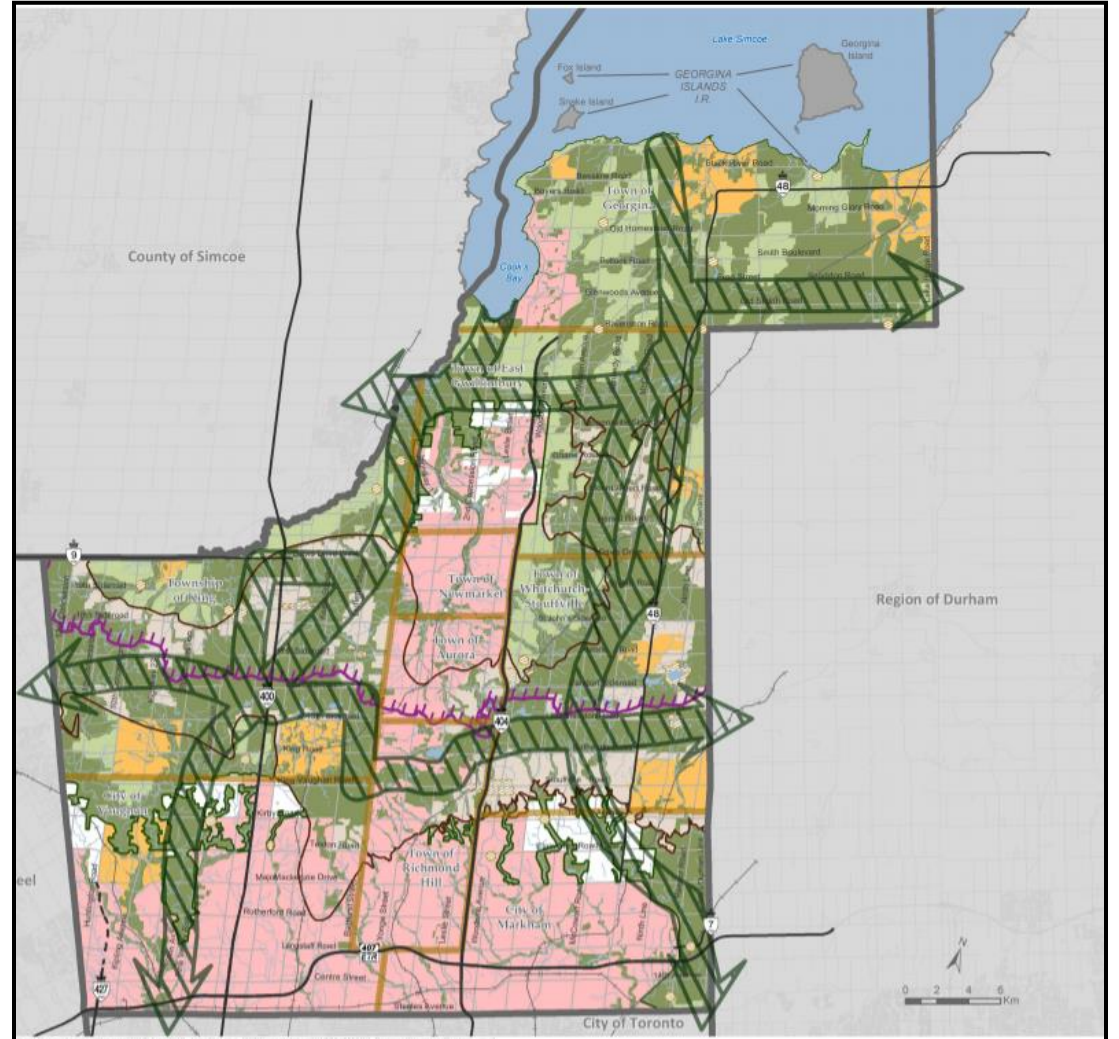
Regional Greenlands System

York Region introduced the Regional Greenlands System in 1994 to protect natural features

Extensive policy and mapping work was undertaken in 2009 to update the Regional Greenlands System

An update is required to the Regional Greenlands System to:

- Implement updated provincial policy
- Implement updated mapping information

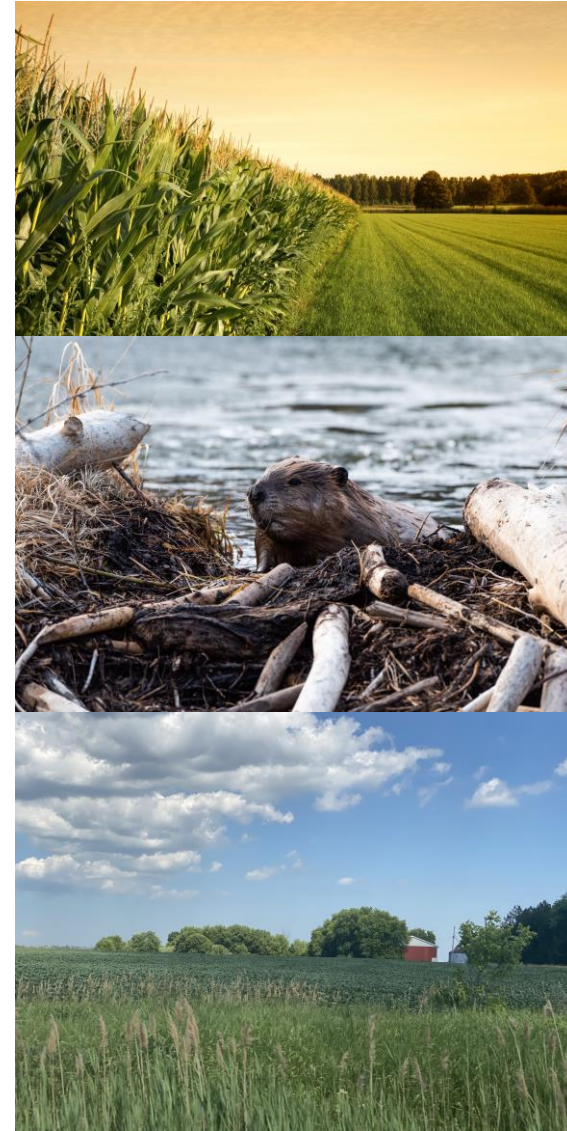


Agriculture and Natural Systems Work Together

Agricultural mapping is a **designation** – it preserves the primary use of land for agriculture and agri-related uses through policy

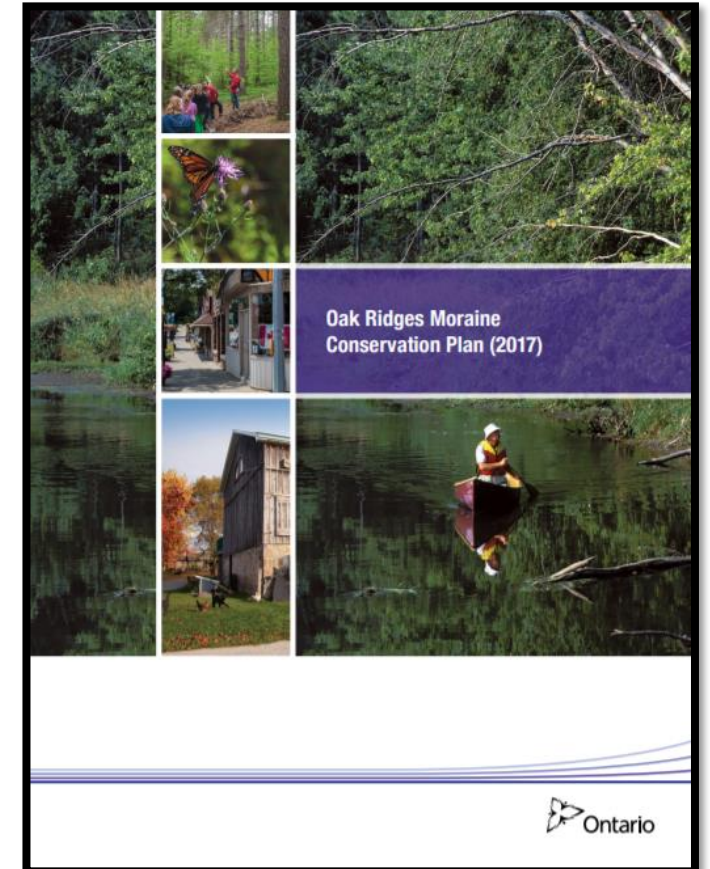
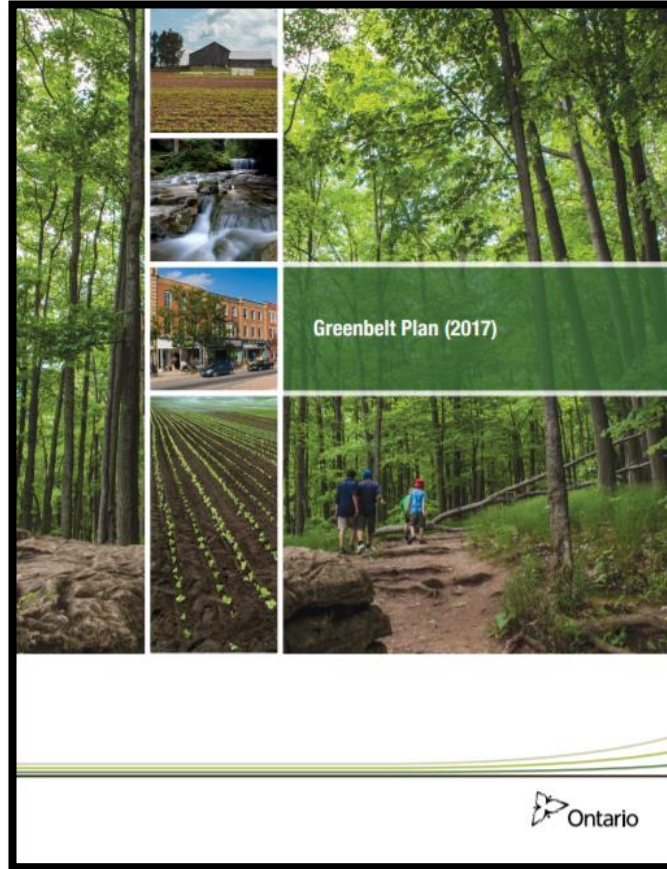
Natural Heritage mapping is an **overlay** - it is layered on top of a designation (such as agriculture) and protects natural features, like wetlands or wildlife habitat with additional policies

Together, agriculture and natural heritage mapping overlap to ensure the primary use of the land is agriculture or agri-related uses and natural features are protected



Conformity Gaps

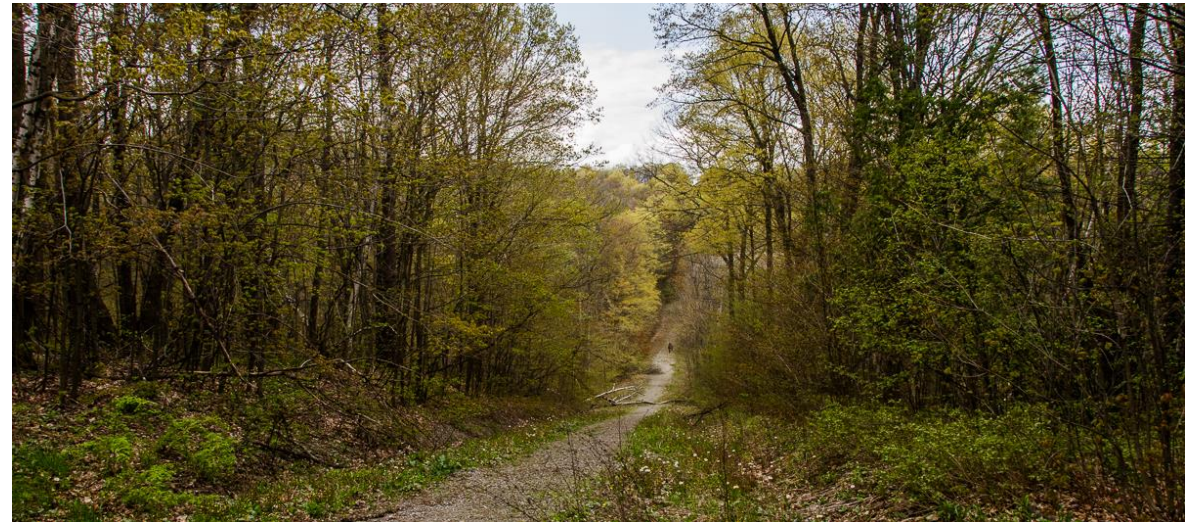
Conformity Gaps



Necessary natural systems policy updates will build on the 2010 ROP's strong policy foundation

Provincial Natural Heritage System

- Established by the Province
- System made up of natural heritage features and areas and linkages to provide:
 - Connectivity
 - Support natural processes
- Helps to maintain diversity, natural functions, plant and animal species and ecosystems



Water Resource System

Key Hydrologic Features

Lakes and their littoral zones

Permanent and intermittent streams

Wetlands

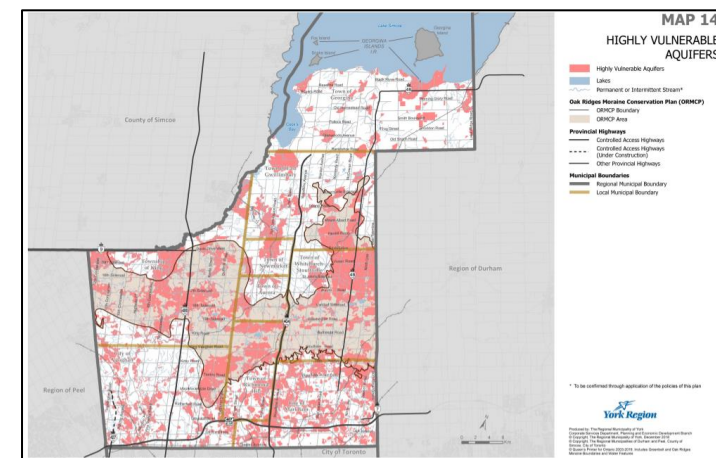
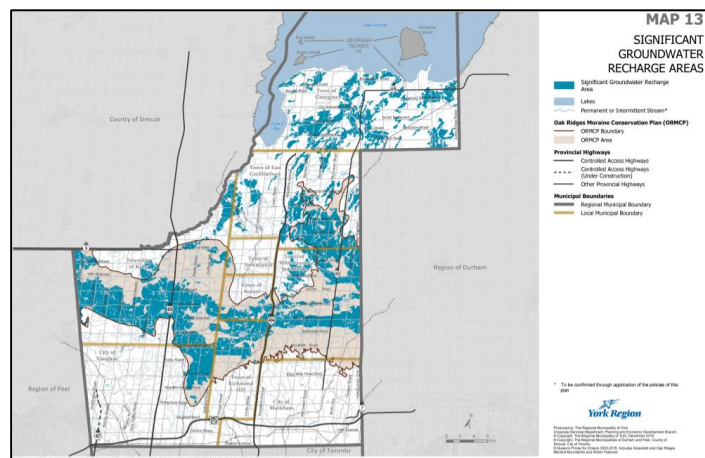
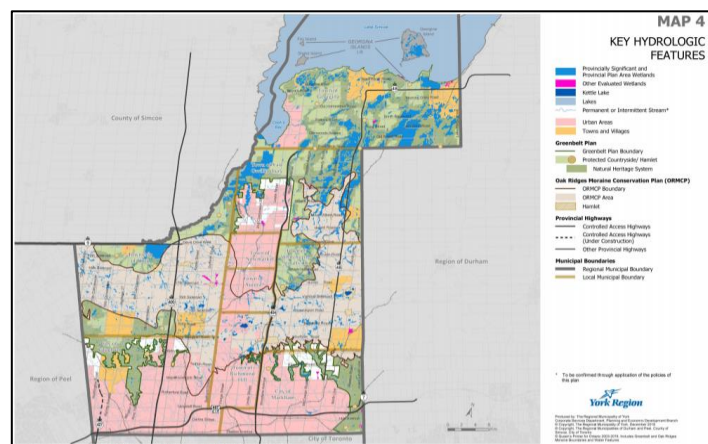
Seepage areas and springs

NEW - Key Hydrologic Areas

Significant groundwater recharge areas

Highly vulnerable aquifers

Significant surface water contribution areas



Policy and Mapping Considerations

What We've Heard to Date...Natural Systems

The Natural System Consider policies that:

- Recognize local systems
- Protect locally significant/unevaluated wetlands
- Better integrate species at risk
- Better protect wetlands and enhance restoration areas
- Address impacts of climate change
- Recommend a policy framework for Ecologically Significant Groundwater Recharge Areas
- Recommend municipally established higher canopy/woodland targets



Policy Considerations

Updates to the Official Plan are required to conform to new Provincial Plans and include:

- Updated definitions and policy language
- Enhanced watershed planning requirements
- Update Species at Risk requirements
- Update mapping of the system and features
- Incorporate Provincial Natural Heritage System mapping



Mapping Updates

- Incorporate Provincial Natural Heritage System for the Growth Plan mapping (Map 2)
- New Water Resource System Schedule
- Update GBP and Oak Ridges Moraine Conservation Plan (ORMCP) land designation maps
- Refine Regional Greenlands System and incorporate more updated local natural heritage system (Map 2)
- Update existing features maps with latest information from the Province, Conservation Authorities, Region and Local Municipalities (Map 2, 3, 4, 5)
- Update Highly Vulnerable Aquifer (Map 14)
- Update Significant Groundwater Recharge Areas (Map 13)

Next Steps

| Q1 2021 | Q2 – Q3 2021 | Q4 2021 | Q2 2022 |
|--|-------------------|------------------------------|---|
| <ul style="list-style-type: none">• Housing Policy Directions Report• Council Education Session• Policy Directions Report #2• Draft Forecast and Land Needs Assessment to Council | MCR Update Report | Draft Regional Official Plan | Anticipated Regional Official Plan Adoption |

Ongoing engagement with internal and external stakeholders

QUESTIONS?

Jelena Baker, Senior Planner, Long Range Planning

Jelena.Baker@York.ca

Chhavi Narula, Planner, Long Range Planning

Chhavi.Narula@York.ca

