

YORK REGION

Town of East Gwillimbury

Preliminary Recommended Locations for Urban Expansion*

- Community
- Employment
- Remaining Developable Whitebelt Areas
- Non-developable (NHS, Infrastructure)

Land Use Category

- Built-up Area
- Designated Greenfield Area
- Greenbelt
- Hamlet
- 2010 Urban Expansion
- Designated Greenfield Area - Agriculture

Base Map

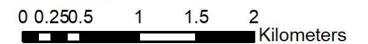
- 400-Series Highways
- Municipal Boundary
- Roads

*Areas are draft and are awaiting approval through the Municipal Comprehensive Review and are subject to change.



Produced by:
The Regional Municipality of York
Planning and Economic
Development, Corporate Services
March 2021

Data: © Queen's Printer for Ontario
2003-2021



MAP 2 YORK REGION

Township of King
and
City of Vaughan

Preliminary Recommended Locations for Urban Expansion*

- Community
- Employment
- Non-developable
(NHS, Infrastructure)

Land Use Category

- Built-up Area
- Designated
Greenfield Area
- Greenbelt
- Hamlet
- 2010 Urban
Expansion
- Designated
Greenfield Area
- Agriculture

Base Map

- Municipal Boundary
- Roads
- 400-Series Highways

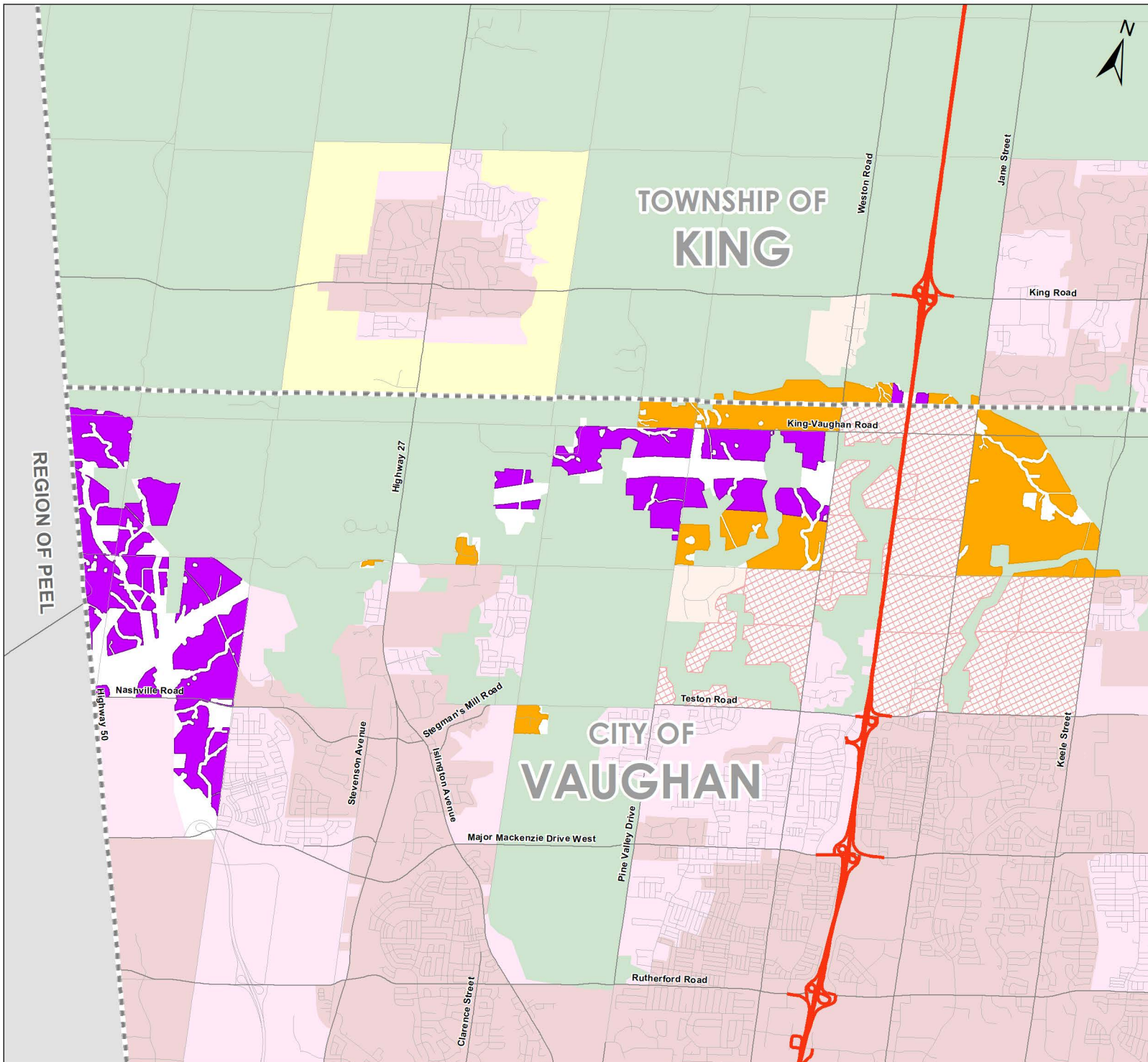
*Areas are draft and are awaiting approval through the Municipal Comprehensive Review and are subject to change.

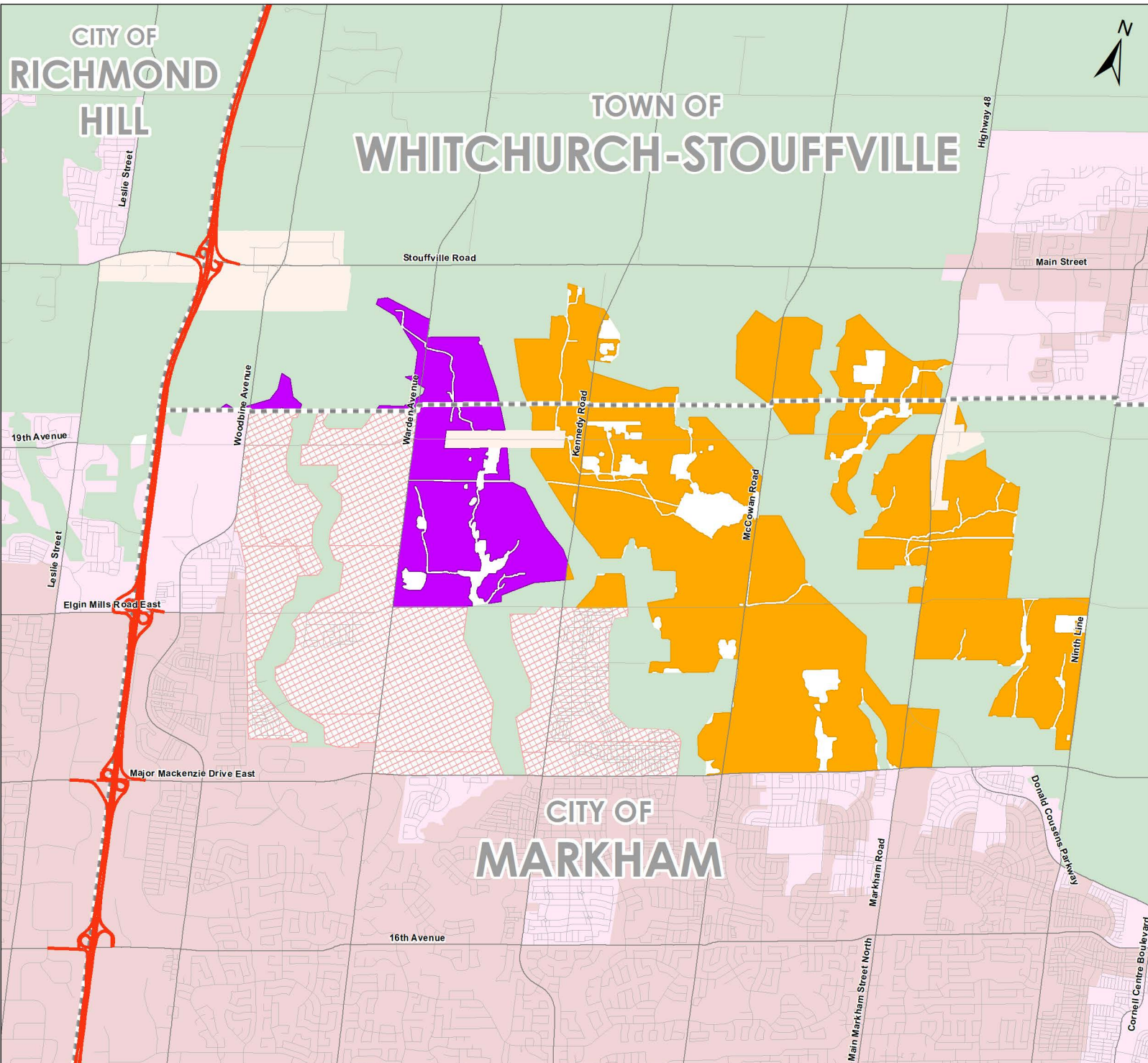


Produced by:
The Regional Municipality of York
Planning and Economic
Development, Corporate Services
March 2021

Data: © Queen's Printer for Ontario
2003-2021

0 0.375 0.75 1.5 2.25 3
Kilometers





MAP 3 YORK REGION

City of Markham
and
Town of Whitchurch-Stouffville

Preliminary Recommended Locations for Urban Expansion*

- Community
- Employment
- Non-developable
(NHS, Infrastructure)

Land Use Category

- Built-up Area
- Designated
Greenfield Area
- Greenbelt
- Hamlet
- 2010 Urban
Expansion
- Designated
Greenfield Area
- Agriculture

Base Map

- Municipal Boundary
- Roads
- 400-Series Highways

*Areas are draft and are awaiting approval through the Municipal Comprehensive Review and are subject to change.



Produced by:
The Regional Municipality of York
Planning and Economic
Development, Corporate Services
March 2021

Data: © Queen's Printer for Ontario
2003-2021

