

2020 GREENING STRATEGY ACHIEVEMENTS and STATE OF THE FOREST

Presented to COMMITTEE OF THE WHOLE

Presented by James Lane
May 13, 2021



PURPOSE AND OUTLINE

PURPOSE

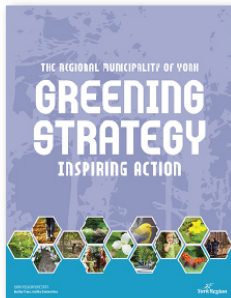
- Present the 2020 Greening Strategy achievements 2021 State of the Forest report

OUTLINE

1. On the Ground Action
2. 2020 Greening Strategy achievements
3. Importance of trees and forests
4. Progress towards canopy and woodland cover targets
5. Path forward to increasing canopy and woodland cover



MOVING FROM POLICY TO ON THE GROUND ACTION



REGIONAL OFFICIAL PLAN

Goal: A sustainable natural environment

GREENING STRATEGY

Deliver on-the-ground action to support a sustainable natural environment



FORESTS



WETLANDS



STREAMS



GRASSLANDS



HABITAT



POLLINATORS

FOREST MANAGEMENT PLAN

Roadmap to increase canopy and woodland cover



STATE OF THE FOREST

Report progress towards canopy and woodland cover targets

40%
CANOPY COVER
TARGET

25%
WOODLAND COVER
TARGET

2020 GREENING STRATEGY ACHIEVEMENTS

ACTION AREAS

STEWARDSHIP & EDUCATION

108 outreach
events

Over **50,000**
residents engaged

ENHANCEMENT & REHABILITATION

60,539
trees and shrubs
planted

24.8 hectares of
new woodlands
created in 2020

ENVIRONMENTAL LAND PROTECTION & PRESERVATION

30+ landowners
engaged in land
securement
opportunities

LEADERSHIP, INNOVATION & KNOWLEDGE

10 forums hosted
with agencies and
local municipalities

16 presentations
at science and
technology forums



YORK REGION RECOGNIZED AS TREE CITY OF THE WORLD

- International recognition for commitment to ensuring urban forests and trees are:
 - Properly maintained
 - Sustainably managed
 - Duly celebrated
- Join over 100 cities in 23 countries recognized in 2021



TREE CITIES

OF THE WORLD™

A programme of:



Food and Agriculture
Organization of the
United Nations

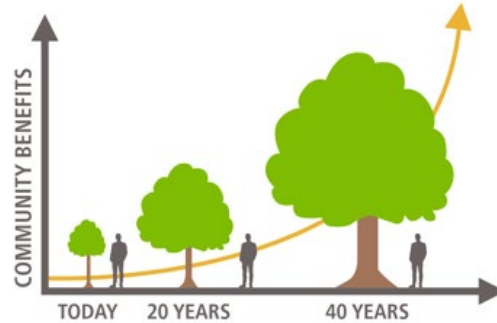


Arbor Day Foundation®

BENEFITS OF TREES AND FORESTS

Access to
**GREEN
SPACE**

IMPROVES
Physical health
Mental health
Overall wellbeing



**GREEN
SPACE**

ADAPTATIONS
Reduces energy use
Reduces exposure to UV rays
Reduces CO₂ in the atmosphere

**FORESTS
AND TREES**

PROVIDES
Recreational opportunities
Wildlife habitat
Healthy communities



**FORESTS
AND TREES**

MITIGATES
Flood Risks
Extreme Heat Risks
Air-borne pollutants

2021 STATE OF THE FOREST

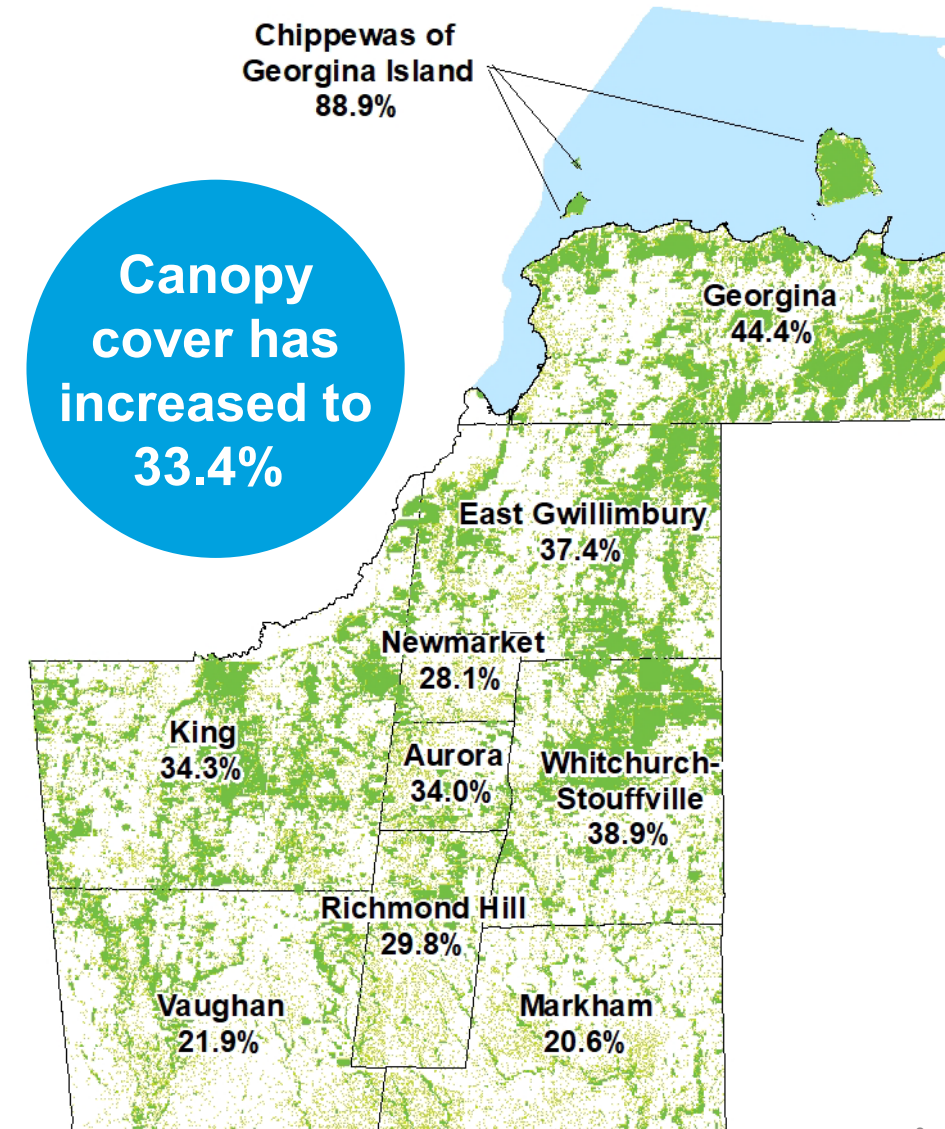
- Communicate progress towards forest management goals and benefits provided by trees and forests
- Report progress towards canopy and woodland cover targets

CANOPY COVER = EVERY TREE



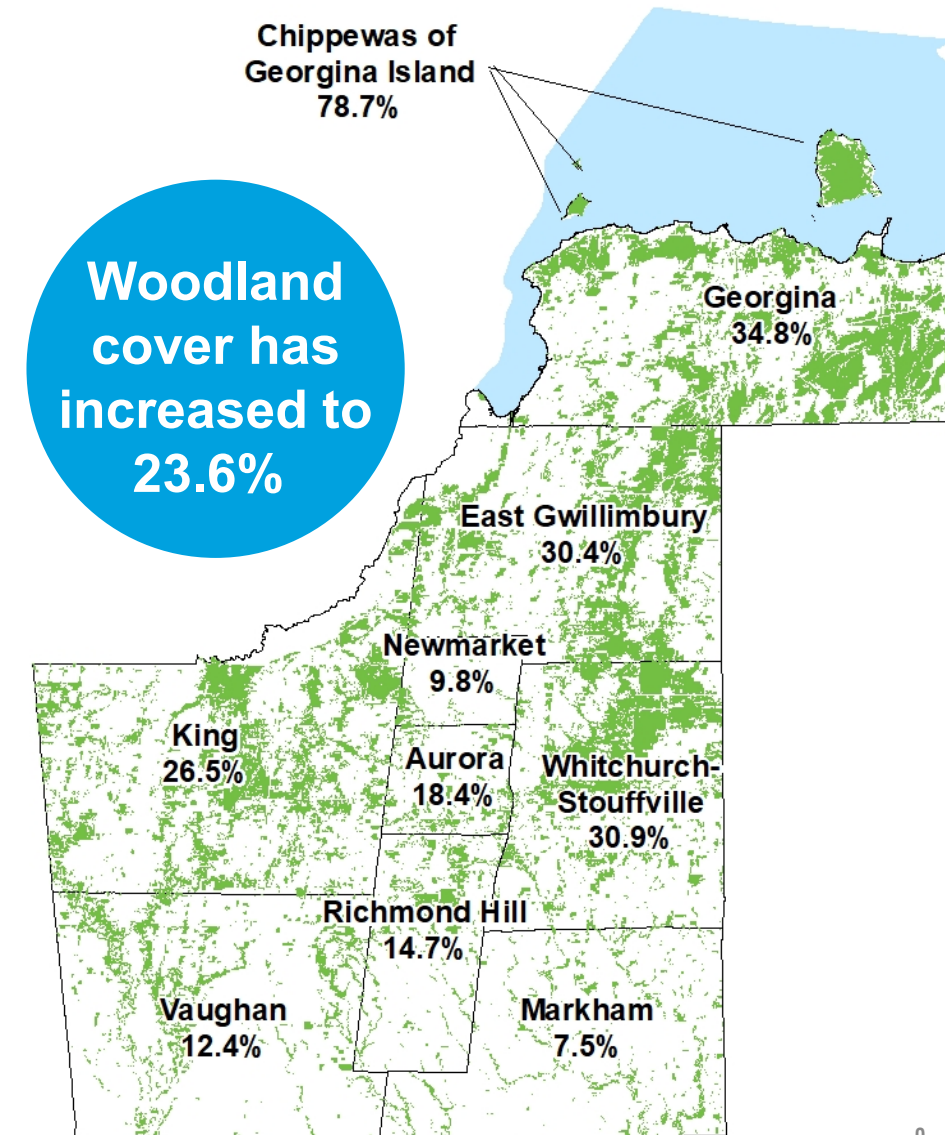
2021 CANOPY COVER RESULTS

First Nation/Municipality	2017	2021	Recommended Range
Chippewas of Georgina Island First Nation	--	88.9%	--
Aurora	28%	34.0%	29% to 35%
East Gwillimbury	36%	37.4%	39% to 44%
Georgina	45%	44.4%	46% to 47%
King	33%	34.3%	36% to 41%
Markham	18%	20.6%	20% to 35%
Newmarket	24%	28.1%	25% to 35%
Richmond Hill	25%	29.8%	26% to 35%
Vaughan	17%	21.9%	25% to 35%
Whitchurch-Stouffville	37%	38.9%	40% to 45%
York Region	31%	33.4%	40%



2021 WOODLAND COVER RESULTS

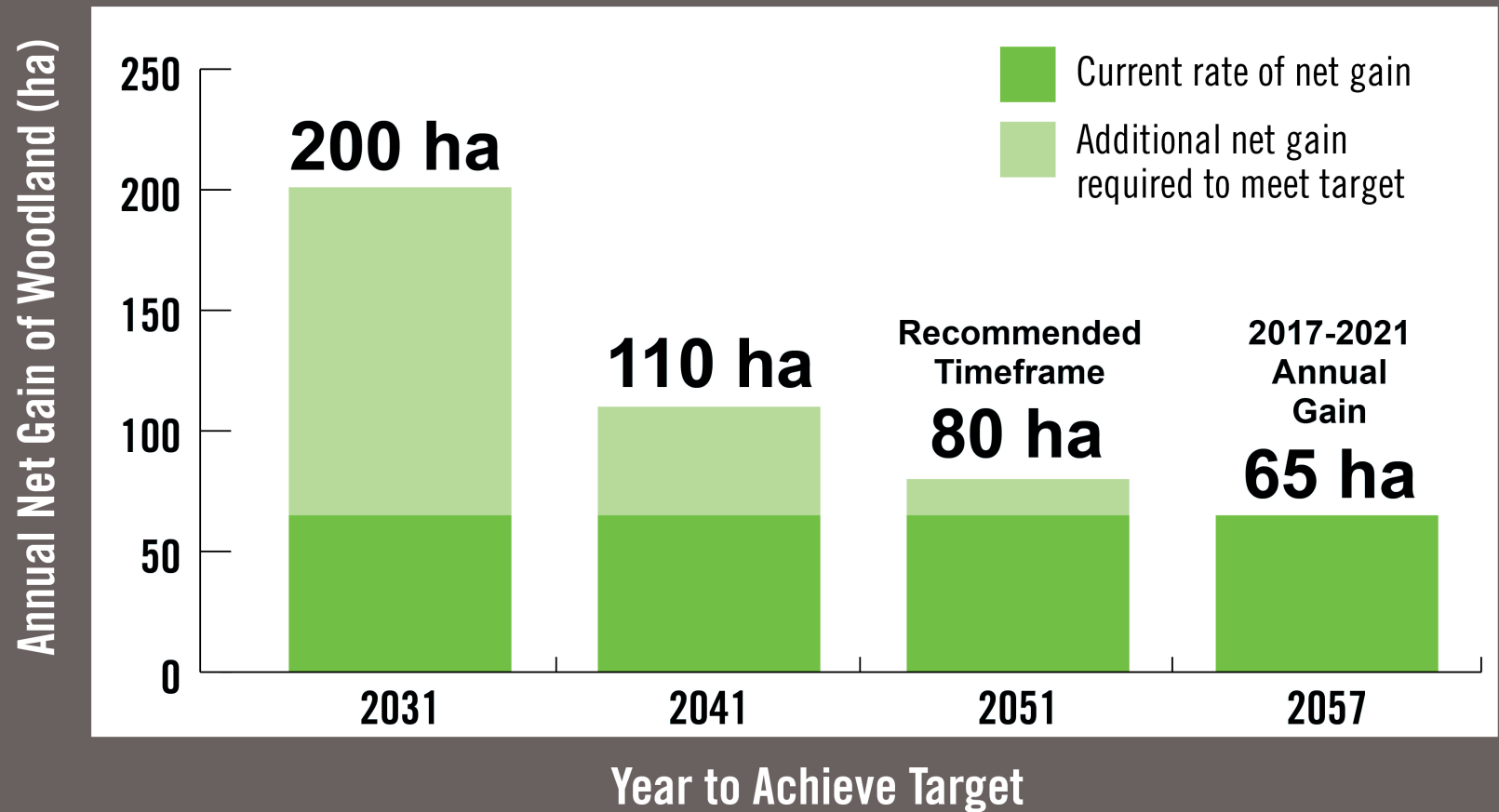
First Nation/Municipality	2017	2021	Recommended Range
Chippewas of Georgina Island First Nation	76.9%	78.7%	--
Aurora	18.8%	18.4%	19% to 20%
East Gwillimbury	30.3%	30.4%	31% to 33%
Georgina	34.2%	34.8%	39% to 40%
King	26.6%	26.5%	26% to 28%
Markham	7.3%	7.5%	8% to 10%
Newmarket	9.9%	9.8%	11% to 13%
Richmond Hill	14.4%	14.7%	14% to 15%
Vaughan	12.4%	12.4%	14% to 17%
Whitchurch-Stouffville	30.8%	30.9%	30% to 32%
York Region	23.5%	23.6%	25%



MORE TIME NEEDED TO ACHIEVE WOODLAND COVER

- Timeframe recommended to achieve 25% woodland cover 2051
- 2051 is more reasonable given historical gains and land use needs

Annual Net Gain to Reach 25%



OPPORTUNITIES TO CLOSE THE GAP



PRIVATE LAND

e.g. estate residential, farmland buffers, corporations, developers



NATURAL REGENERATION

e.g. valleylands, old fields, marginal farmlands

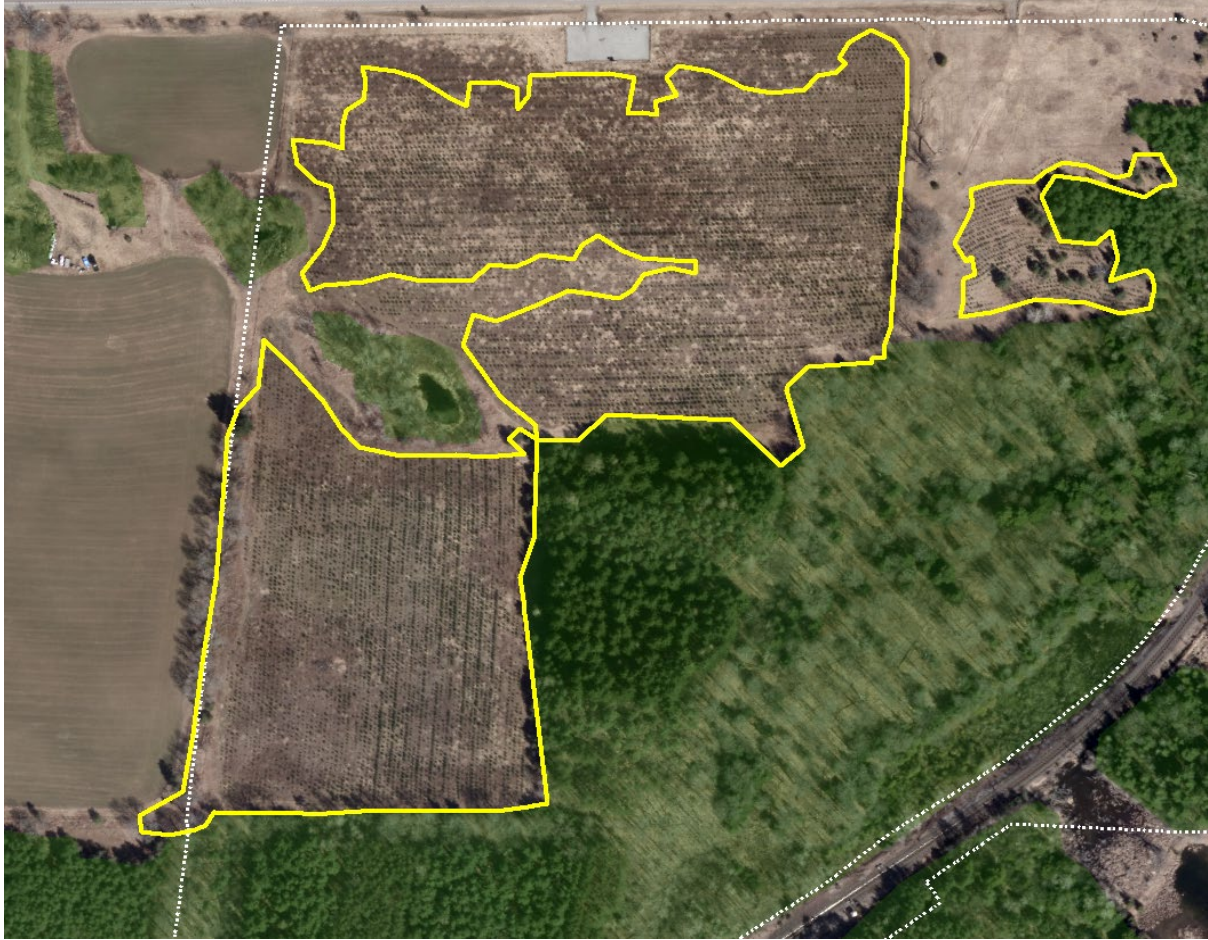


PUBLIC AND INSTITUTIONAL LAND

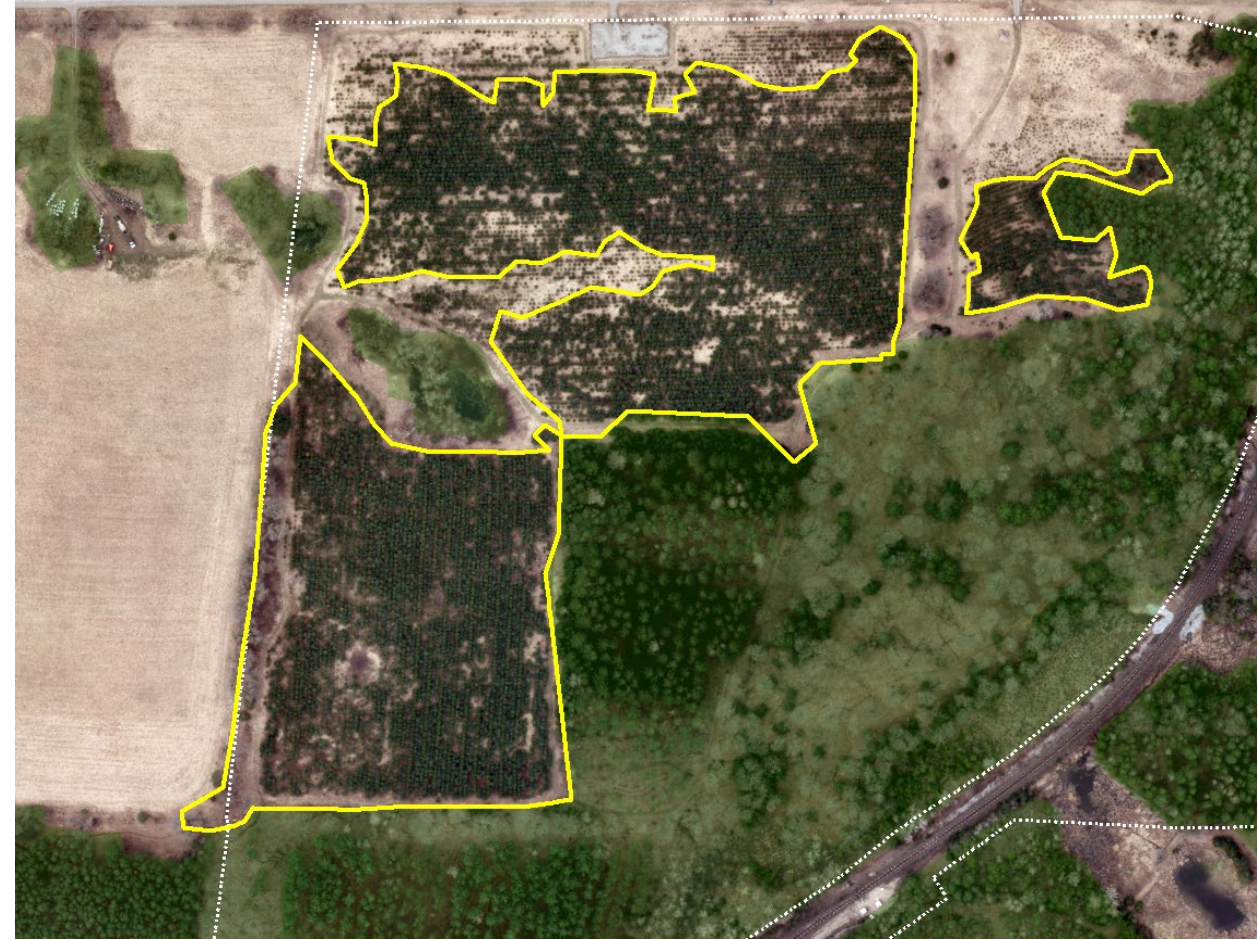
e.g. Rouge Park, conservation areas, Regional properties, utility corridors



EXAMPLE OF WOODLAND COVER GAIN — LARGE SCALE PLANTING



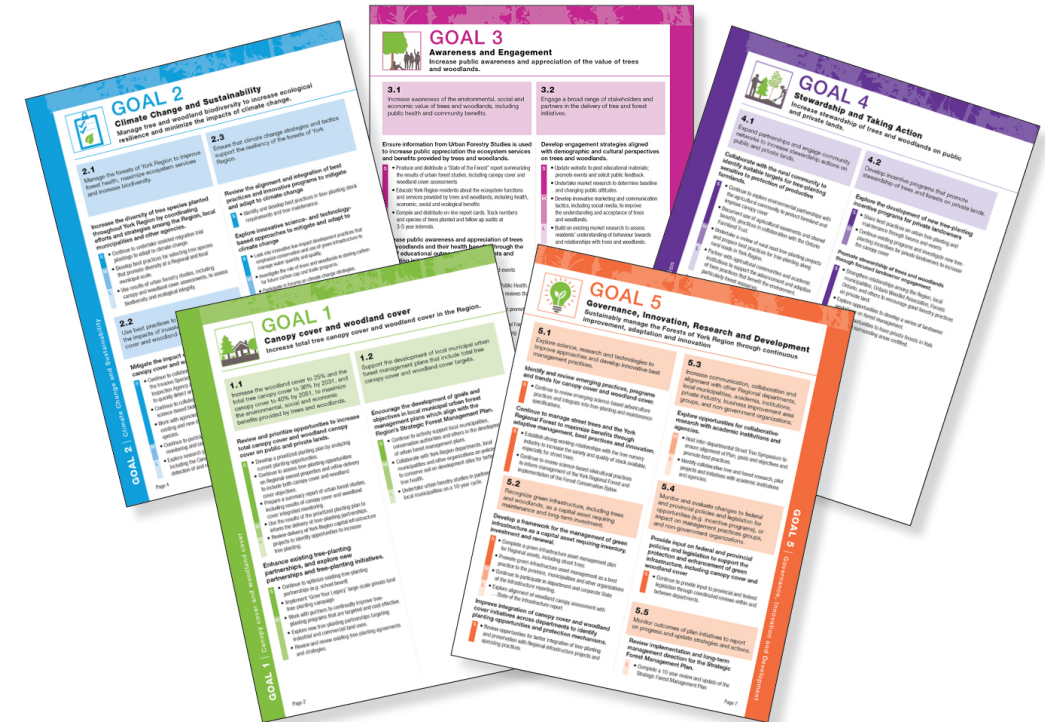
Davis Drive Tract – 2017
2010 Planting



Davis Drive Tract – 2021
7 ha gained

PATH FORWARD TO INCREASE CANOPY AND WOODLAND COVER

- York Region Forest Management Plan (2016) is our road map to increasing canopy and woodland cover
- Continue to promote and refine planting programs
- Connect residents to the values and benefits provided by trees and forests
- Results of 2026 re-assessments and forest studies will be used to guide an update to the plan



THANK YOU

