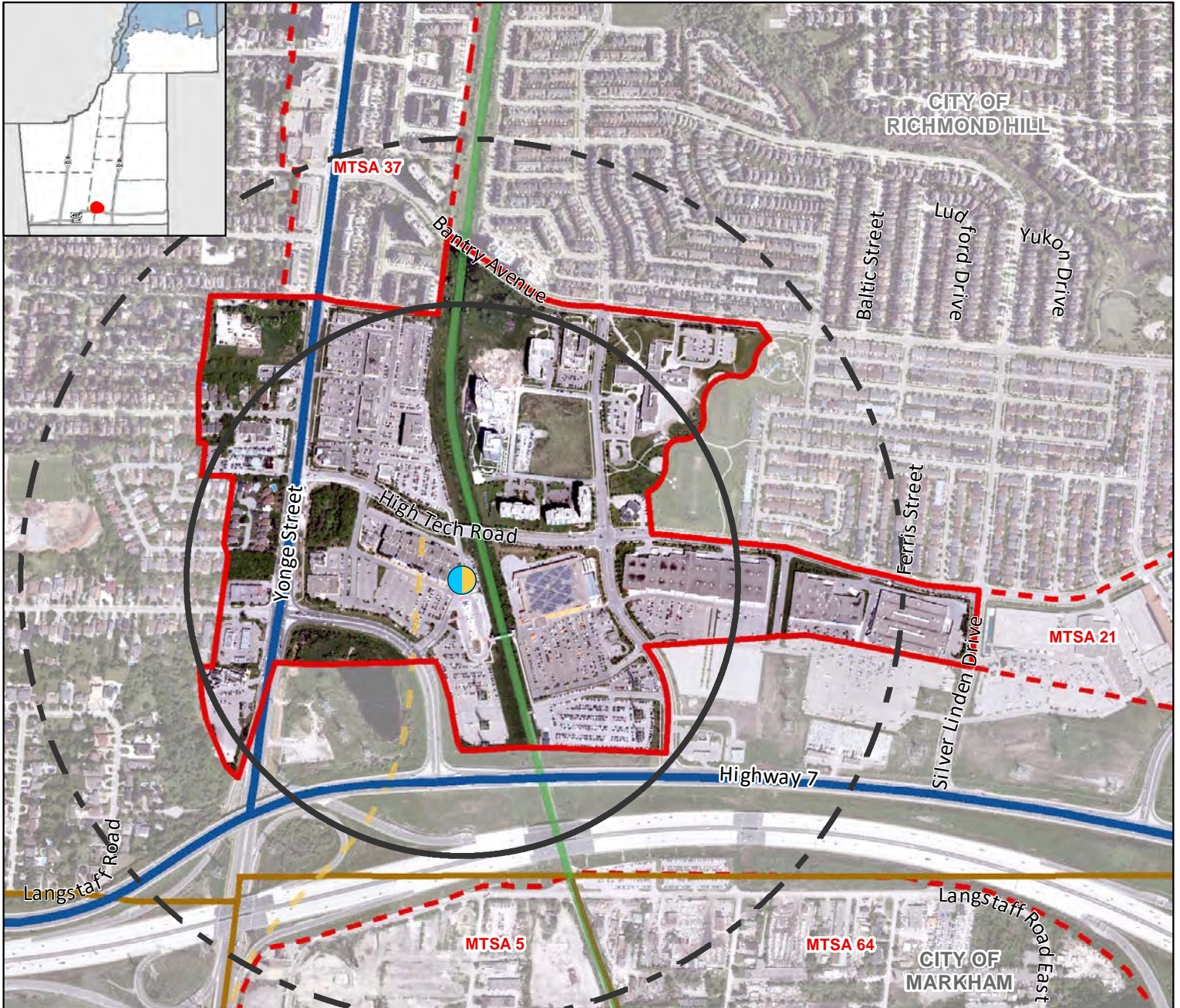


Richmond Hill Centre Subway Station

Near High Tech Road and Yonge Street

MTSA 4

Richmond Hill



Legend

Major Transit Station

Priority Bus Rapid Transit/ Other Subway

Proposed MTSA Boundary

500m Radius

800m Radius

Adjacent Proposed MTSA Boundary

Priority Transit Corridors - Provincial Growth Plan

Bus Rapid Transit

Other Transit Corridors

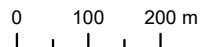
Subway

GO Rail

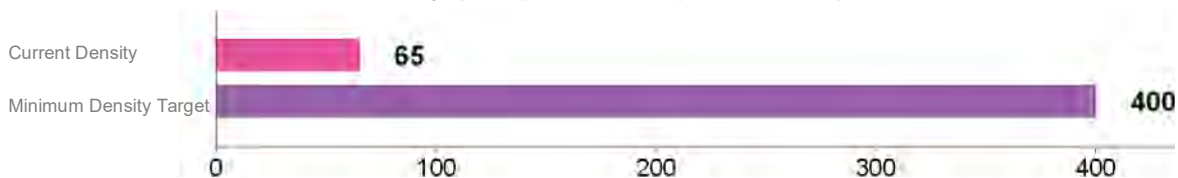
Local Municipal Boundary

Richmond Hill Centre Subway Station MSTA

Gross Area:
73.32 ha



Density (People & Jobs per Hectare)



The Regional Municipality of York
Corporate Services,
Planning and Economic Development
August 2020

Data © Queen's Printer for
Ontario 2003-2020

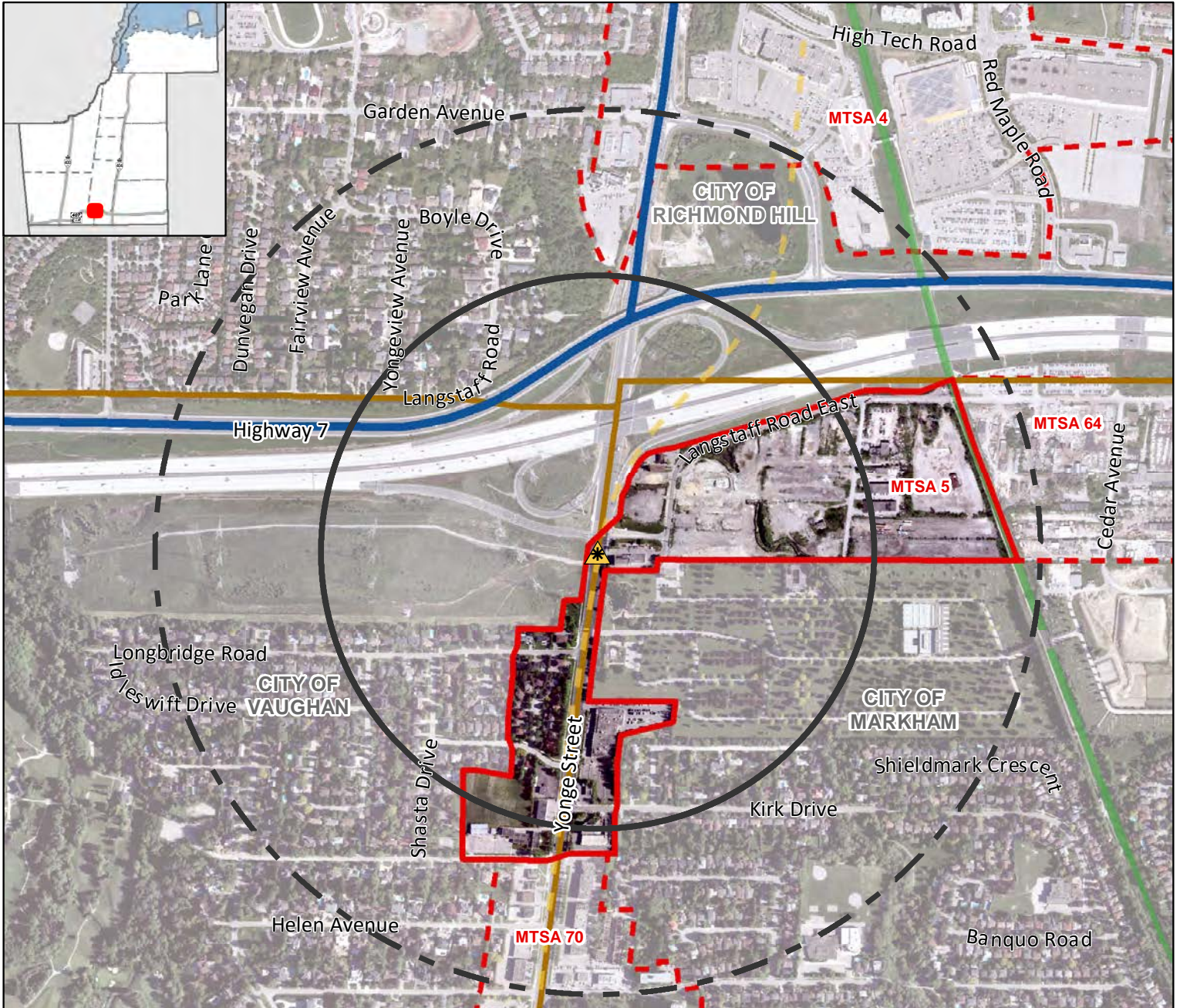
See York.ca for disclaimer information.

Langstaff-Longbridge Subway Station

Near Longbridge Road and Yonge Street

MTSA 5

Markham/Vaughan



Legend

- Other Subway
- Proposed MTSA Boundary
- 500m Radius
- 800m Radius
- Adjacent Proposed MTSA Boundary
- Priority Transit Corridors - Provincial Growth Plan: Bus Rapid Transit
- Other Transit Corridors: Subway
- Other Transit Corridors: GO Rail
- Other Transit Corridors: Local Municipal Boundary

Langstaff-Longbridge Subway Station
MTSA Gross Area:
 27.51 ha

Density (People & Jobs per Hectare)

| Category | Current Density | Minimum Density Target |
|----------|-----------------|------------------------|
| MARKHAM | 20 | 400 |
| VAUGHAN | 50 | 150 |

The Regional Municipality of York
 Corporate Services,
 Planning and Economic Development
 August 2020

Data: © Queen's Printer for Ontario 2003-2020
 See York.ca for disclaimer information.

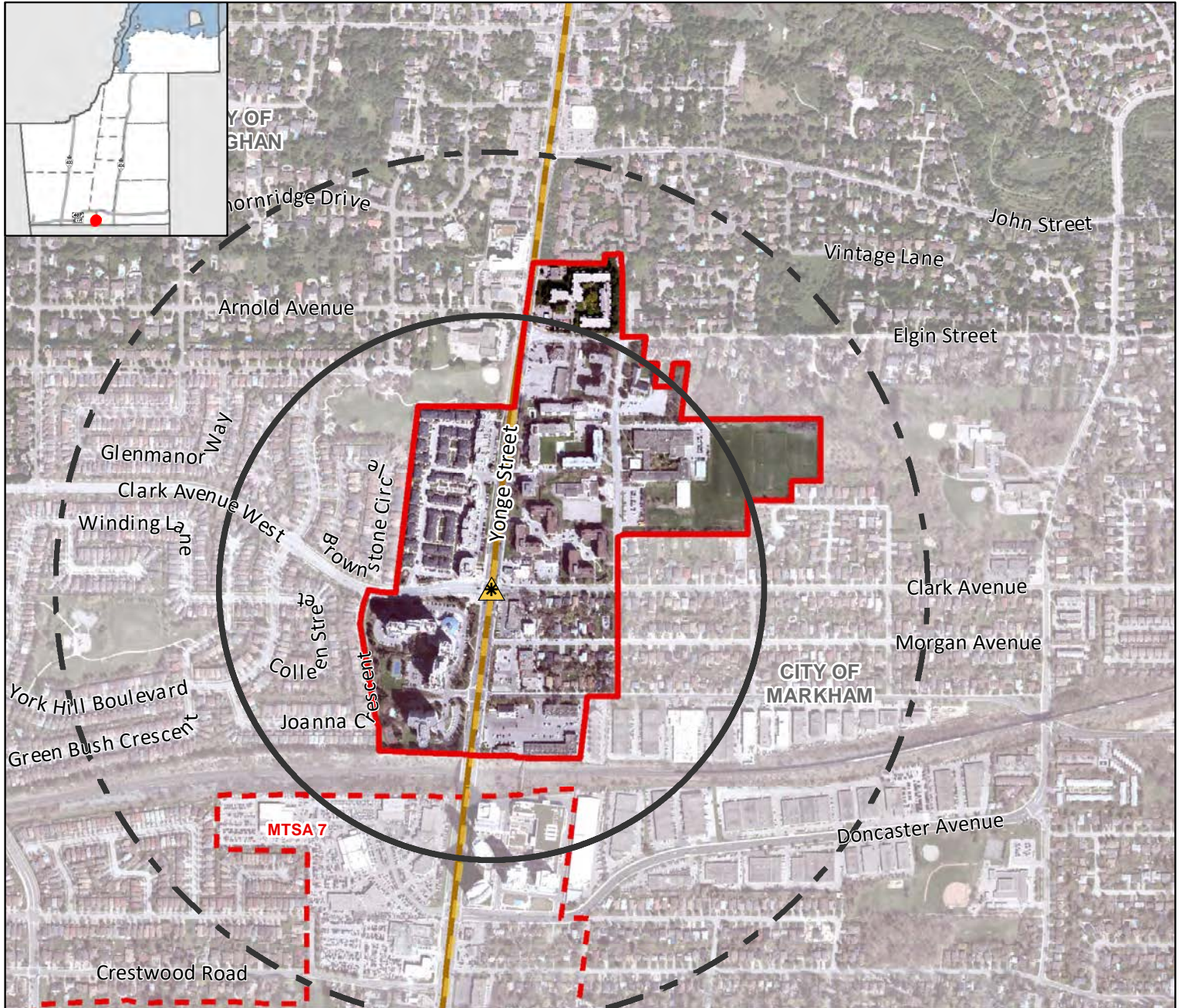
* Identification of this location as a MTSA is pending final approval from Metrolinx of a Subway station at this location. Delineations and density targets may require refinements depending on final decisions on these future stations from Metrolinx

Clark Subway Station

Near Clark Avenue and Yonge Street

MTSA 6

Markham/Vaughan



Legend

- Other Subway
- Proposed MTSA Boundary
- 500m Radius
- 800m Radius
- Adjacent Proposed MTSA Boundary

Other Transit Corridors

- Subway
- Local Municipal Boundary

Clark Subway Station MTSA
Gross Area:
 39.10 ha




Density (People & Jobs per Hectare)

| Category | Value | Municipality |
|------------------------|-------|--------------|
| Current Density | 135 | MARKHAM |
| Minimum Density Target | 250 | MARKHAM |
| Current Density | 225 | VAUGHAN |
| Minimum Density Target | 250 | VAUGHAN |



The Regional Municipality of York
 Corporate Services,
 Planning and Economic Development
 August 2020

Data: © Queen's Printer for Ontario 2003-2020
 See York.ca for disclaimer information.

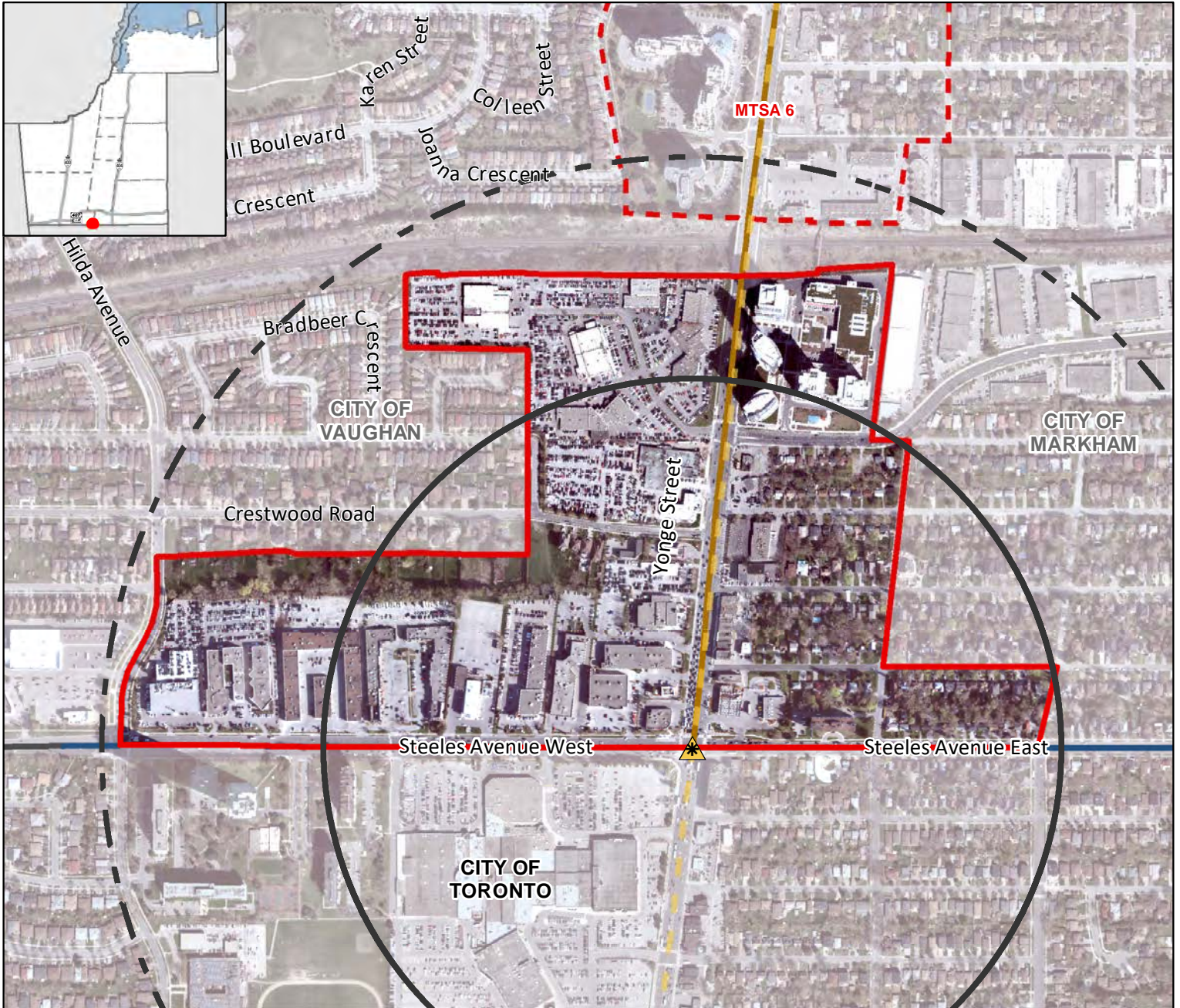
* Identification of this location as a MTSA is pending final approval from Metrolinx of a Subway station at this location. Delineations and density targets may require refinements depending on final decisions on these future stations from Metrolinx.

Steeles Subway Station

Near Steeles Avenue and Yonge Street

MTSA 7

Markham/Vaughan



Legend

- Other Subway
- Proposed MTSA Boundary
- 500m Radius
- 800m Radius
- Adjacent Proposed MTSA Boundary
- Other Transit Corridors - Subway
- Bus Rapid Transit
- Local Municipal Boundary
- Regional Municipal Boundary

Steeles Subway Station MTSA Gross Area: 49.17 ha

0 100 200 m

Density (People & Jobs per Hectare)

| Category | Value |
|------------------------|-------|
| Current Density | 65 |
| Minimum Density Target | 265 |
| MARKHAM | 300 |
| VAUGHAN | 300 |

The Regional Municipality of York
Corporate Services,
Planning and Economic Development
August 2020

Data: © Queen's Printer for Ontario 2003-2020
See York.ca for disclaimer information.

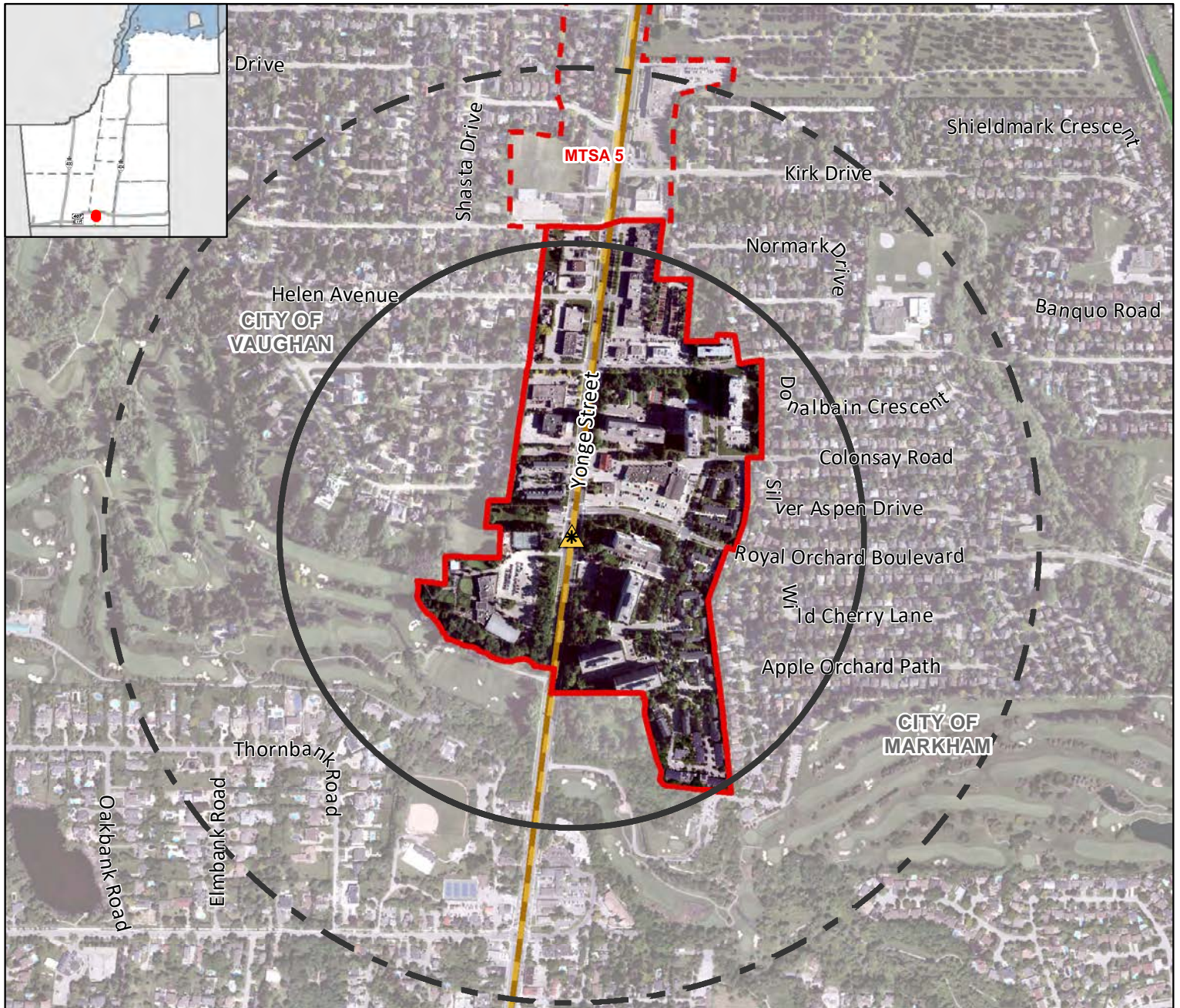
* Identification of this location as a MTSA is pending final approval from Metrolinx of a Subway station at this location. Delineations and density targets may require refinements depending on final decisions on these future stations from Metrolinx.

Royal Orchard Subway Station

MTSA 70

Along Yonge Street, near Royal Orchard Boulevard

Markham/Vaughan



Legend

- Other Subway
- Proposed MTSA Boundary
- 500m Radius
- 800m Radius
- Adjacent Proposed MTSA Boundary

Other Transit Corridors

- Subway
- GO Rail
- Local Municipal Boundary

Royal Orchard Subway Station
MTSA Gross Area:
 31.60 ha

Density (People & Jobs per Hectare)

| Category | Value |
|------------------------|-------|
| Current Density | 215 |
| Minimum Density Target | 250 |
| Current Density | 30 |
| Minimum Density Target | 200 |

MARKHAM
VAUGHAN

The Regional Municipality of York
 Corporate Services,
 Planning and Economic Development
 August 2020

Data: © Queen's Printer for Ontario 2003-2020
 See York.ca for disclaimer information.

* Identification of this location as a MTSA is pending final approval from Metrolinx of a Subway station at this location. Delineations and density targets may require refinements depending on final decisions on these future stations from Metrolinx.