

The background of the slide is a photograph of the York Region Council Building. It is a modern, multi-story building with a curved facade and large windows. Two prominent, cylindrical towers rise from the building, each featuring a clock face. The sky is blue with some light clouds.

SCARSIN — PANDEMIC FORECASTING

Presented to:
YORK REGIONAL COUNCIL

Presented by
Linda Kaleis, Jasmine Song

Thursday, September 23, 2021

The logo for York Region, featuring a stylized white starburst or 'Y' shape above the text 'York Region' in a white serif font.

York Region



AGENDA

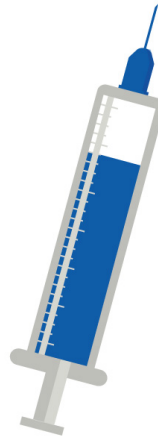
1. Forecasting Models and Inputs
2. Fall Projections
3. Key Trends

MODEL INTERVENTIONS ACROSS VARIOUS SETTINGS

MORE THAN



OF ELIGIBLE RESIDENTS 12+
HAVE RECEIVED THEIR
FIRST VACCINE



MORE THAN



OF ELIGIBLE RESIDENTS 12+
HAVE RECEIVED
BOTH DOSES

ADMINISTERED
MORE THAN

1,535,000 DOSES



HOUSEHOLD

- Time spent with household



COMMUNITY

- Mobility
- Masking
- Physical distancing



SCHOOL

- Closures
- Online learning
- Masking
- Physical distancing



WORKPLACE

- Mobility
- Masking
- Physical distancing

MODEL REFLECTS CURRENT REALITY



VOC GROWTH — DELTA VARIANT

Increased transmissibility and dominant circulating strain



VACCINATION COMPLIANCE & EFFECTIVENESS

85% of eligible population with at least 1 dose



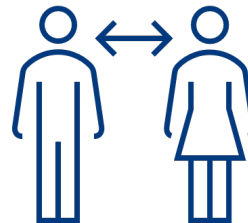
CONTACT TRANSMISSION

Increased among the younger populations



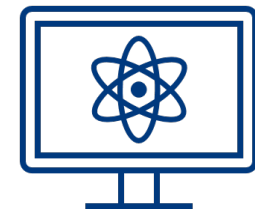
PUBLIC HEALTH MEASURES

Maintaining mask and physical distancing compliance



MOBILITY

Increased into the fall

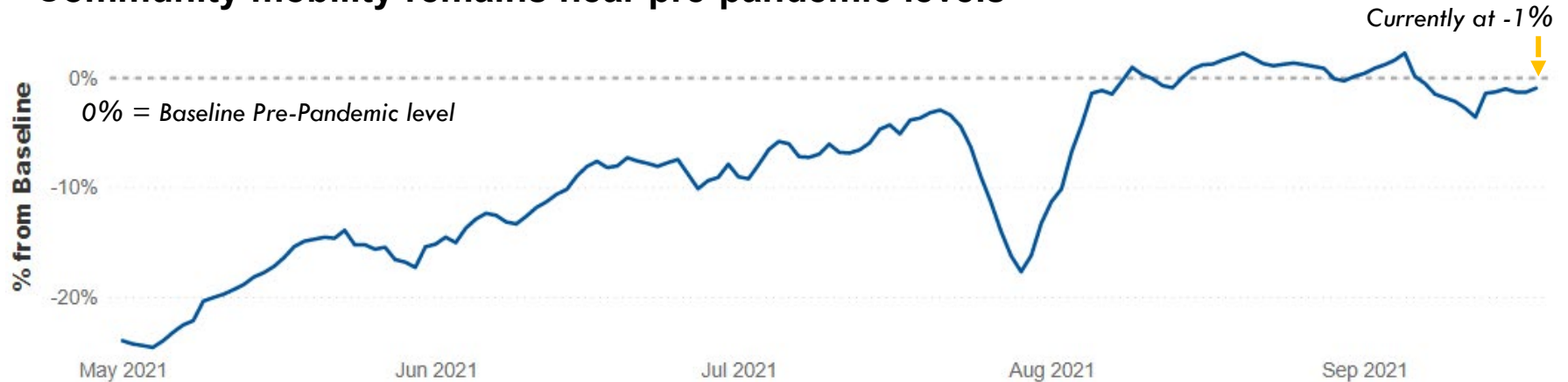


ONLINE LEARNING

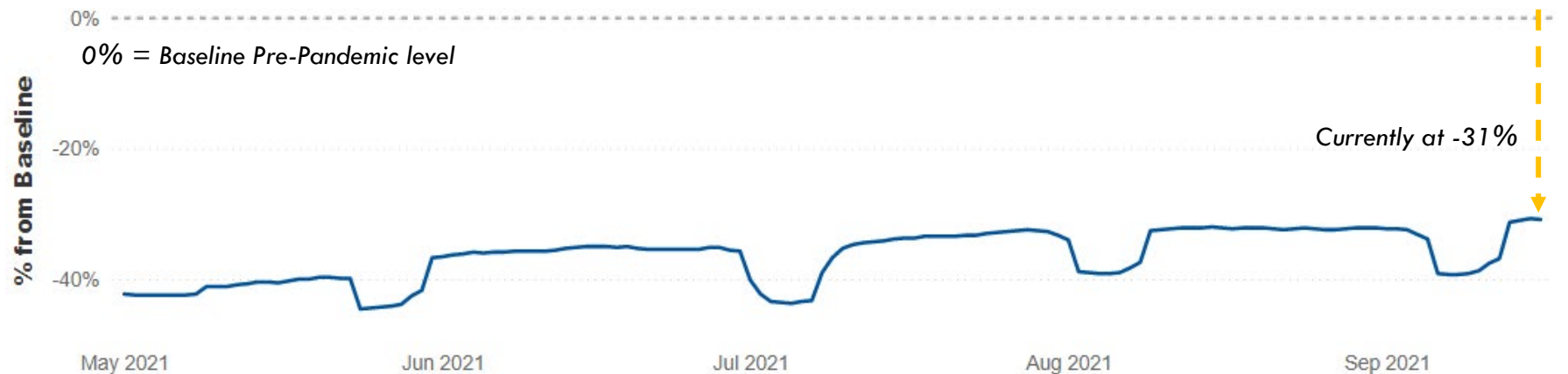
Held at 13%

MOBILITY DATA IS USED AS A MEASURE OF CONTACT RATES

Community mobility remains near pre-pandemic levels



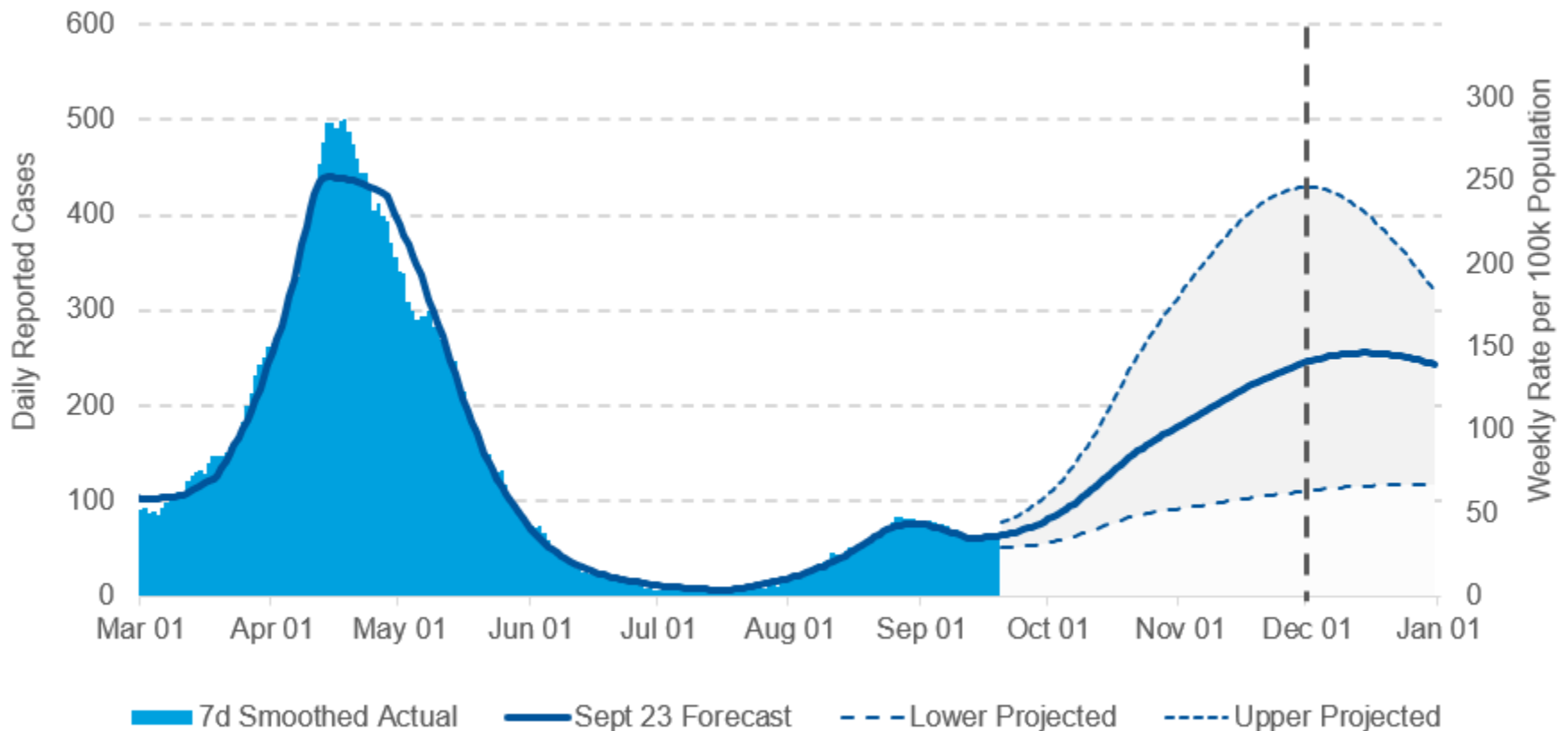
Workplace mobility is gradually increasing



**MODEL PROJECTS A FOURTH WAVE INTO THE FALL,
CONSISTENT WITH PROVINCIAL AND FEDERAL MODELS**

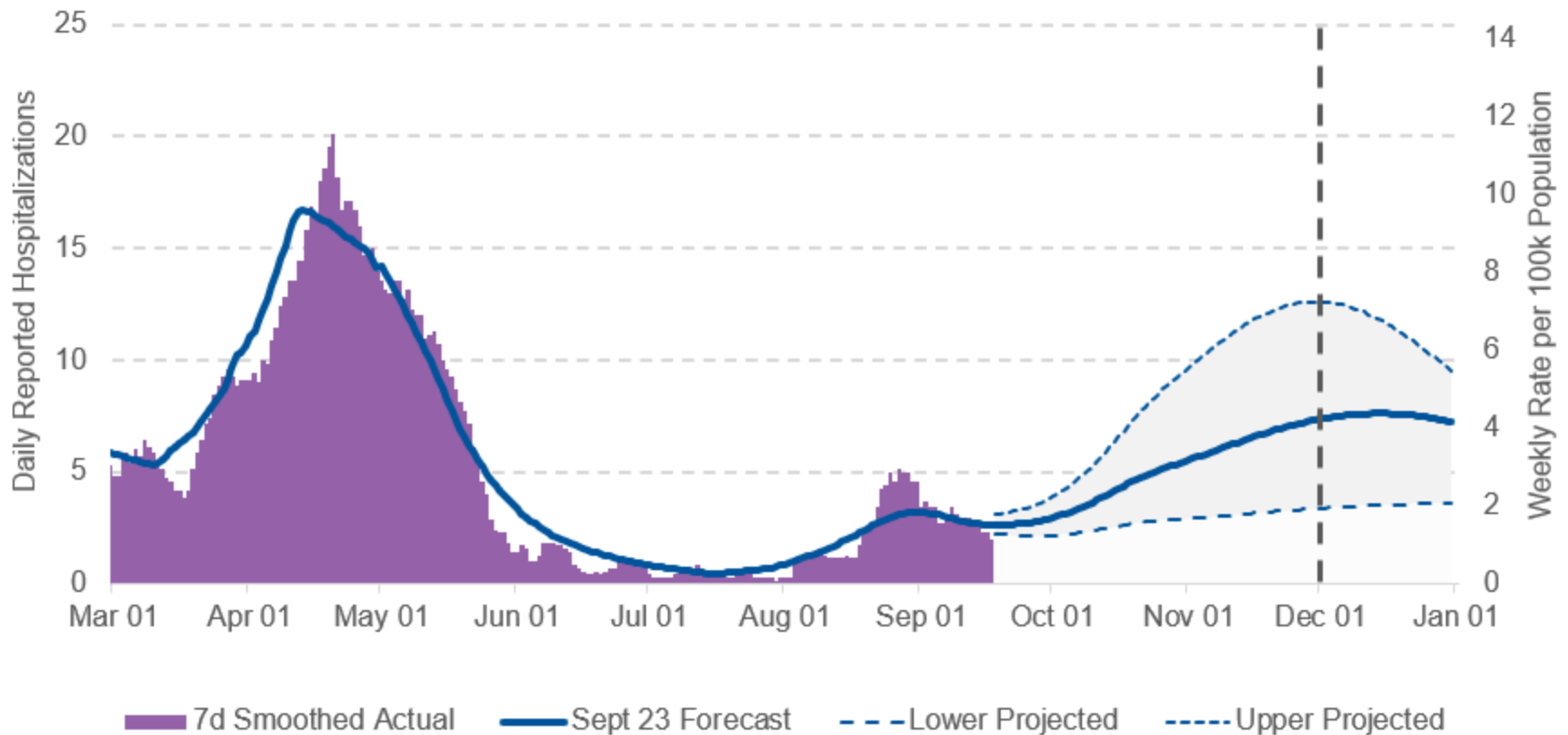
A RISE IN CASES IS PROJECTED INTO THE FALL

Forecast projects **245 average daily cases** by December 1, equivalent to **141 weekly cases per 100,000 population**



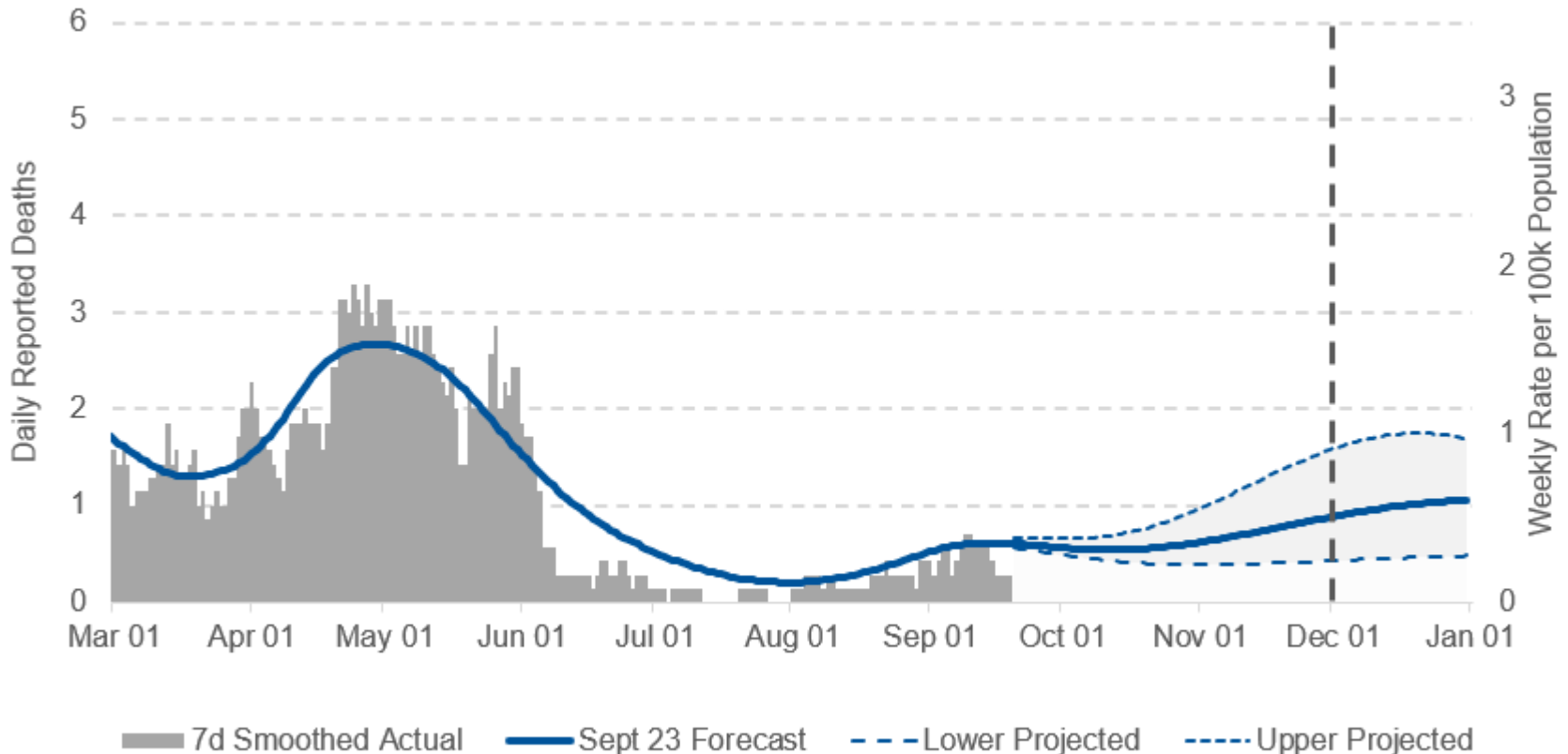
RISE IN HOSPITALIZATIONS MIRROR THE RISE IN CASES

Forecast projects **7 average daily hospitalizations** by December 1, equivalent to **4 weekly hospitalizations per 100,000 population**



DEATHS ARE PROJECTED TO REMAIN LOW

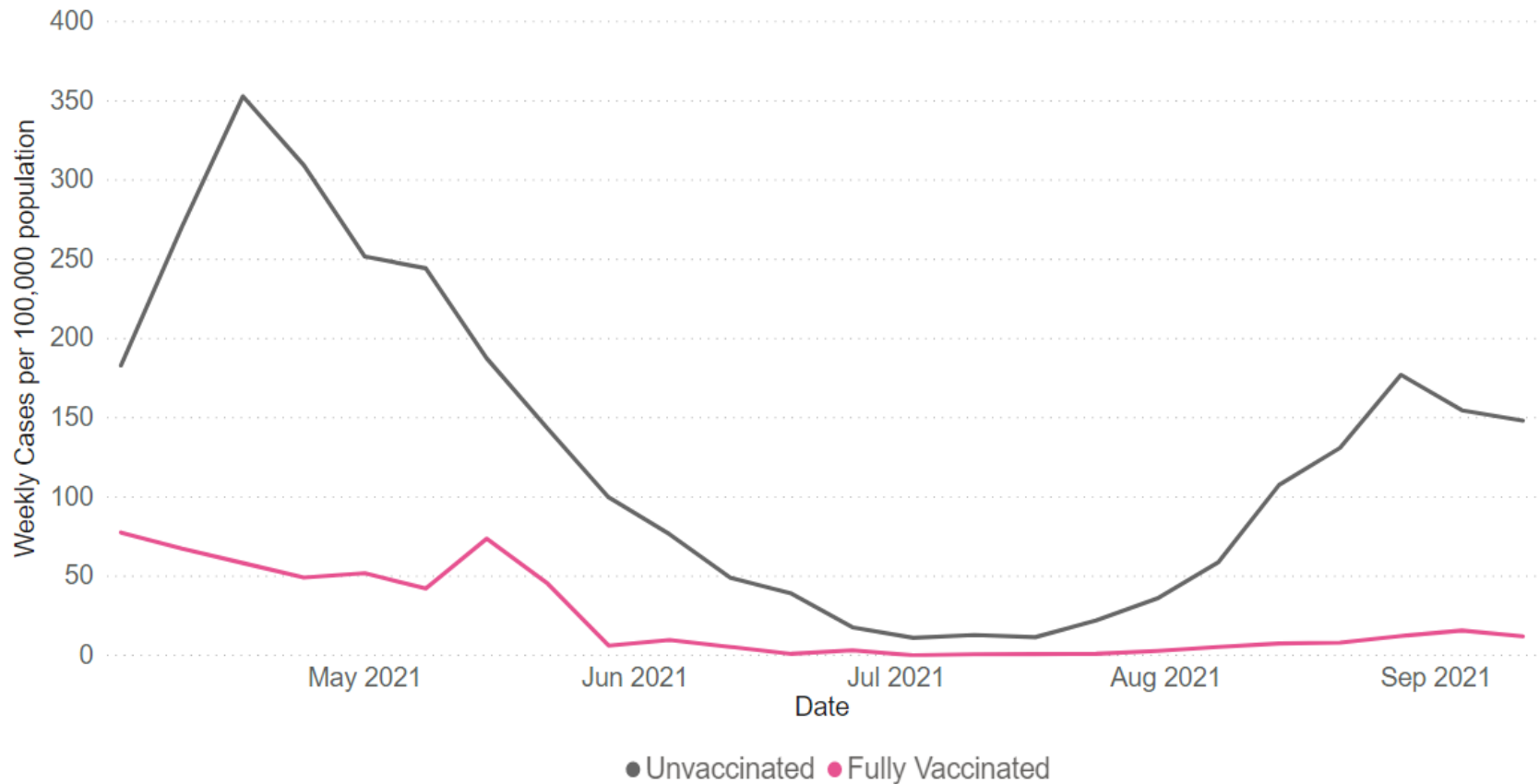
Forecast projects **1 average daily deaths** by December 1, equivalent to **less than 1 weekly death per 100,000 population**



**TRENDS HIGHLIGHT INCREASED RISK FOR UNVACCINATED
INDIVIDUALS AND THE PROJECTED BURDEN BY AGE**

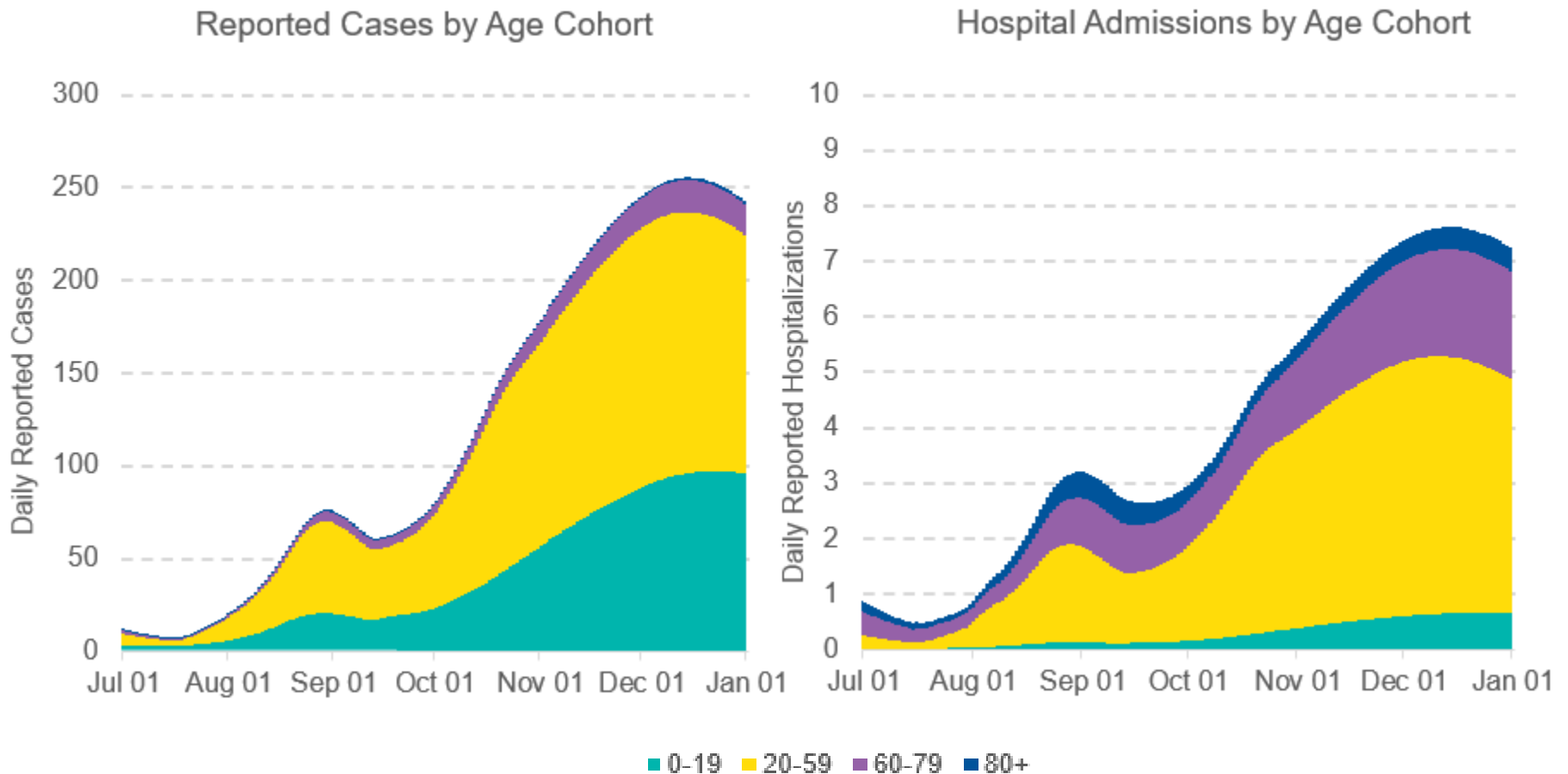
RISK OF INFECTION IS GREATLY REDUCED AMONG FULLY VACCINATED INDIVIDUALS

In the most recent week, unvaccinated individuals were **9.5 times more likely** to be infected than those who are fully vaccinated



MAJORITY OF CASES ARE PROJECTED TO BE IN THE YOUNGER POPULATIONS

Cases will be primarily be among those **under 60 years old**, whereas hospital admissions will be primarily among those **20 to 79 years old**



Questions/ Discussion