

The background of the slide is a photograph of a modern, multi-story building with a curved facade and large windows. Two prominent, cylindrical clock towers rise from the building, each featuring a large, round clock face. The sky is a clear, bright blue with some light clouds. The text is overlaid on the right side of the image.

RENEWING YORK REGION'S VISION: STRONG, CARING, SAFE COMMUNITIES

Presented to
COMMITTEE OF THE WHOLE

Presented by
Bruce Macgregor

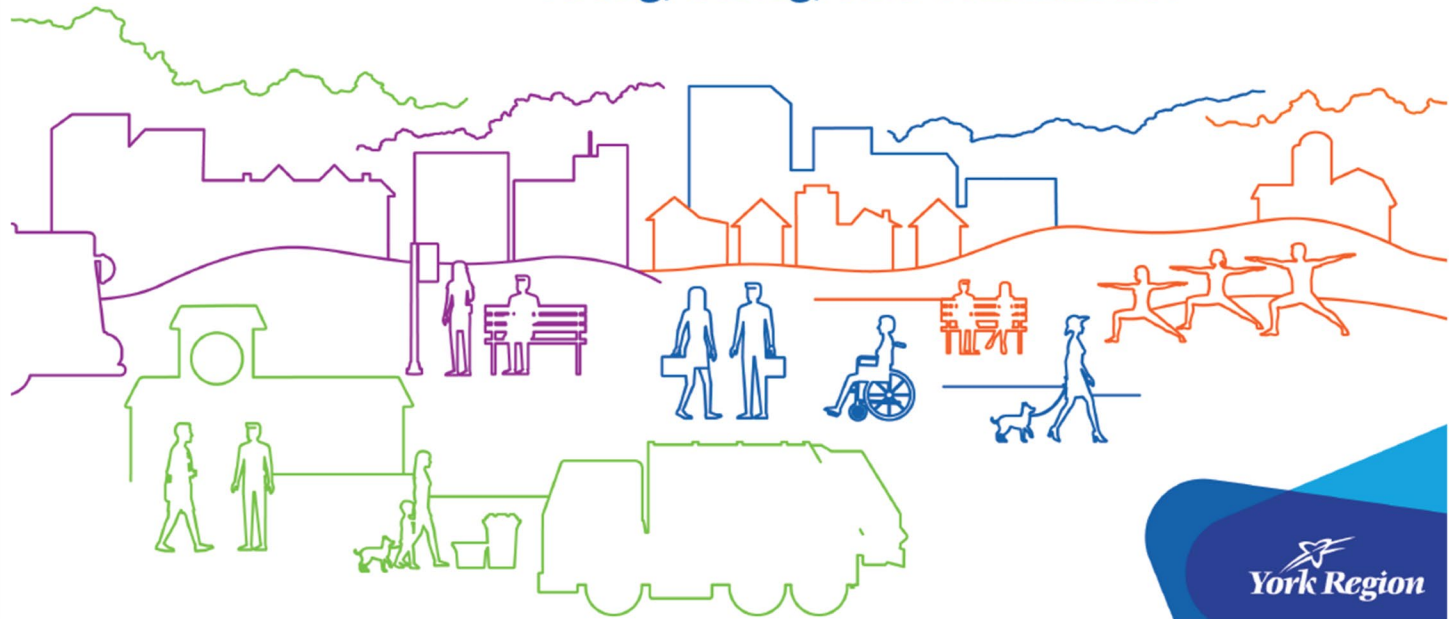
NOVEMBER 11, 2021

The logo for York Region, featuring a stylized white starburst or 'Y' shape above the text 'York Region' in a white serif font.

York Region

VISION

Strong, Caring, Safe Communities







York Region

WHAT WE HEARD



CORE COMPONENTS OF VISION

VISION STATEMENT	Strong, Caring, Safe Communities			
AREAS OF FOCUS				
COMMUNITY INDICATORS	Five per Area of Focus			

TO ARRIVE AT a **better**
world, WE **HAVE** TO
IMAGINE IT FIRST

Alison Macleod

VISION WITHOUT
action IS DAYDREAM.
ACTION WITHOUT
VISION IS NIGHTMARE.

Japanese Proverb

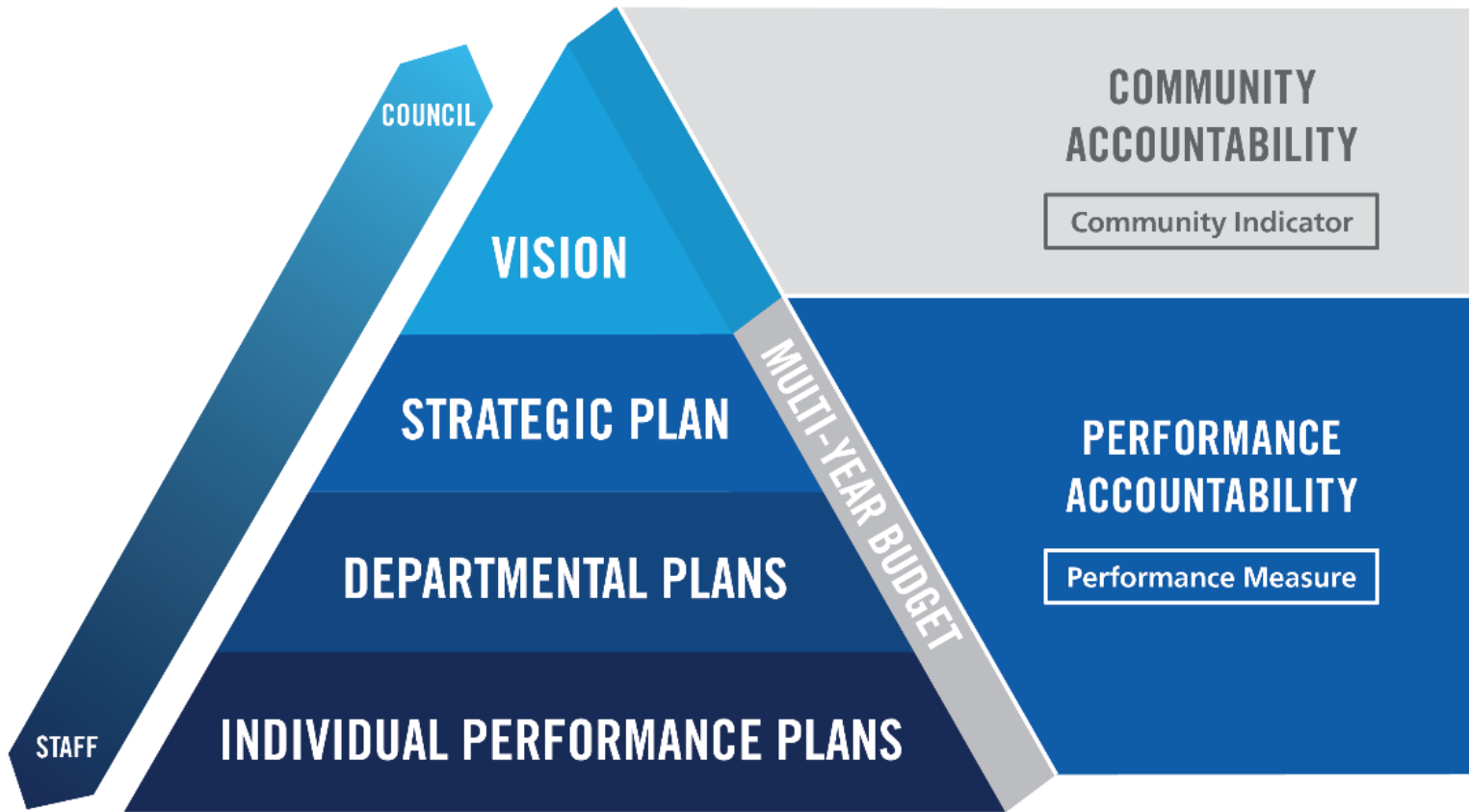
THERE IS **peace** and **security**,
THERE IS **law** and **order**,
THERE ARE **public schools**
and **public health**

Ratna Omidvar on why people come to Canada

ACTION
WITHOUT **vision** IS
ONLY PASSING **time**,
VISION
WITHOUT **action** IS
MERELY DAY DREAMING,
but **VISION with ACTION**
CAN CHANGE
THE WORLD

Nelson Mandela

YORK REGION'S ACCOUNTABILITY FRAMEWORK



VISION

We envision

**strong,
caring,
safe communities**

through our mission of

**working together to serve our thriving
communities— today and tomorrow**

by relying on our values of

**Integrity
Commitment
Accountability
Respect
Excellence**