

Draft York Region Official Plan Update

Presented to
Planning Advisory Committee

Presented by
Teresa Cline, Manager
Policy and Environment
Long Range Planning Division

December 15, 2021



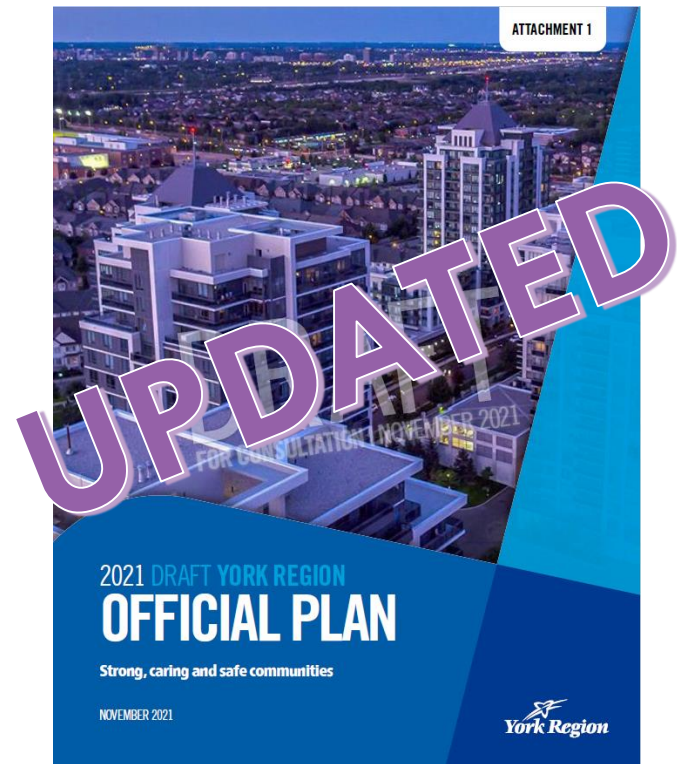
OUTLINE

- Council, Partner, and Public Engagement
- Major Policy Updates
 - Forecast and Intensification Unit Results from Council Direction
- Next Steps



DRAFT ROP UPDATED WITH COUNCIL'S DIRECTION ON LAND NEEDS ASSESSMENT

- Updated Draft ROP reflects Council's decisions on Alternate 2051 Forecast and Land Needs Assessment
- Updated to reflect Council's Nov 25, 2021 direction



DRAFT ROP IS THE CULMINATION OF KEY COUNCIL DIRECTION

Ongoing engagement with Council

- 3 Council Education Sessions
- Over 25 reports
- Presentations and memos
- Committees of Council



COMMITTEES OF COUNCIL PROVIDE VALUABLE PERSPECTIVES

- Planning Advisory Committee
- Housing Affordability Task Force
- Agriculture and Agri-Food Advisory Committee
- Accessibility Advisory Committee

PARTNER ALIGNMENT WILL SET THE STAGE FOR IMPLEMENTATION

Local Municipal and Conservation Authority input

- MCR Local Municipal Working Group
- Frequent discussions to inform policy development
- Extensive feedback collected
- Presentations on the Forecast and Land Needs Assessment to majority of local municipal Councils
- Other local municipal staff forums

MAJOR POLICY UPDATES

UPDATED, STRENGTHENED AND CLARIFIED POLICIES

1. Accommodating growth to 2051
2. New urban designations and delineations, as required by the Growth Plan for the Greater Golden Horseshoe
3. Greater focus on a diversity of housing options
4. Protection of natural and agricultural systems



URBAN POLICIES SET THE FOUNDATION FOR LOCAL MUNICIPAL CONTEXTS

- Extended planning horizon
- Updated intensification hierarchy
- Strengthened phasing policies
- Future Urban Area's
- Employment Areas and Major Transit Station Areas



REGIONAL STRUCTURE

MAP 1 — REGIONAL STRUCTURE

MAP 1 REGIONAL STRUCTURE

- Regional Centre
- Regional Corridor
- Urban Area
- Towns and Villages
- Agricultural System
- Regional Greenlands System
- Subject to Minister's Order February 3, 2015 and special provision policy 5.3.6
- Area within ORMCP conditional upon amendments to Ontario Regulation 140/02*

Greenbelt Plan

- Greenbelt Plan Boundary

Oak Ridges Moraine Conservation Plan

- Oak Ridges Moraine Conservation Plan Boundary

Provincial Highways

- Existing
- Under Construction

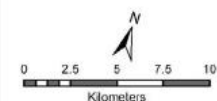
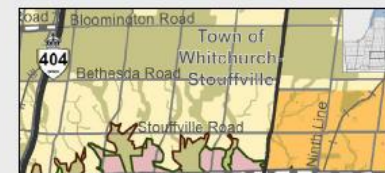
Municipal Boundaries

- Regional Municipal Boundary
- Local Municipal Boundary

*Urban designations are conditional upon amendments to the ORM designations prior to adoption of the ROP.

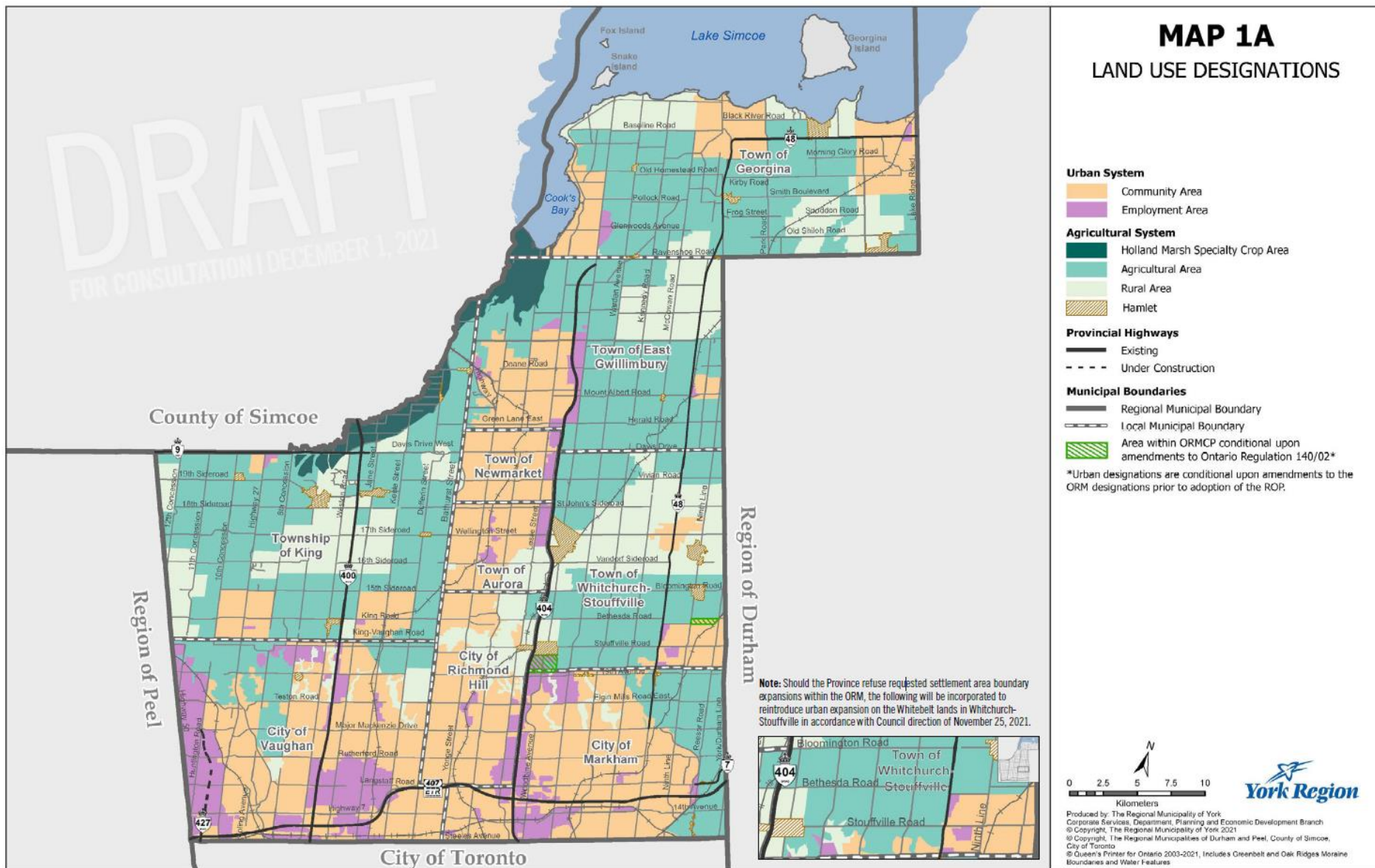
Region of Durham

Note: Should the Province refuse requested settlement area boundary expansions within the ORM, the following will be incorporated to reintroduce urban expansion on the Whitebelt lands in Whitchurch-Stouffville in accordance with Council direction of November 25, 2021.

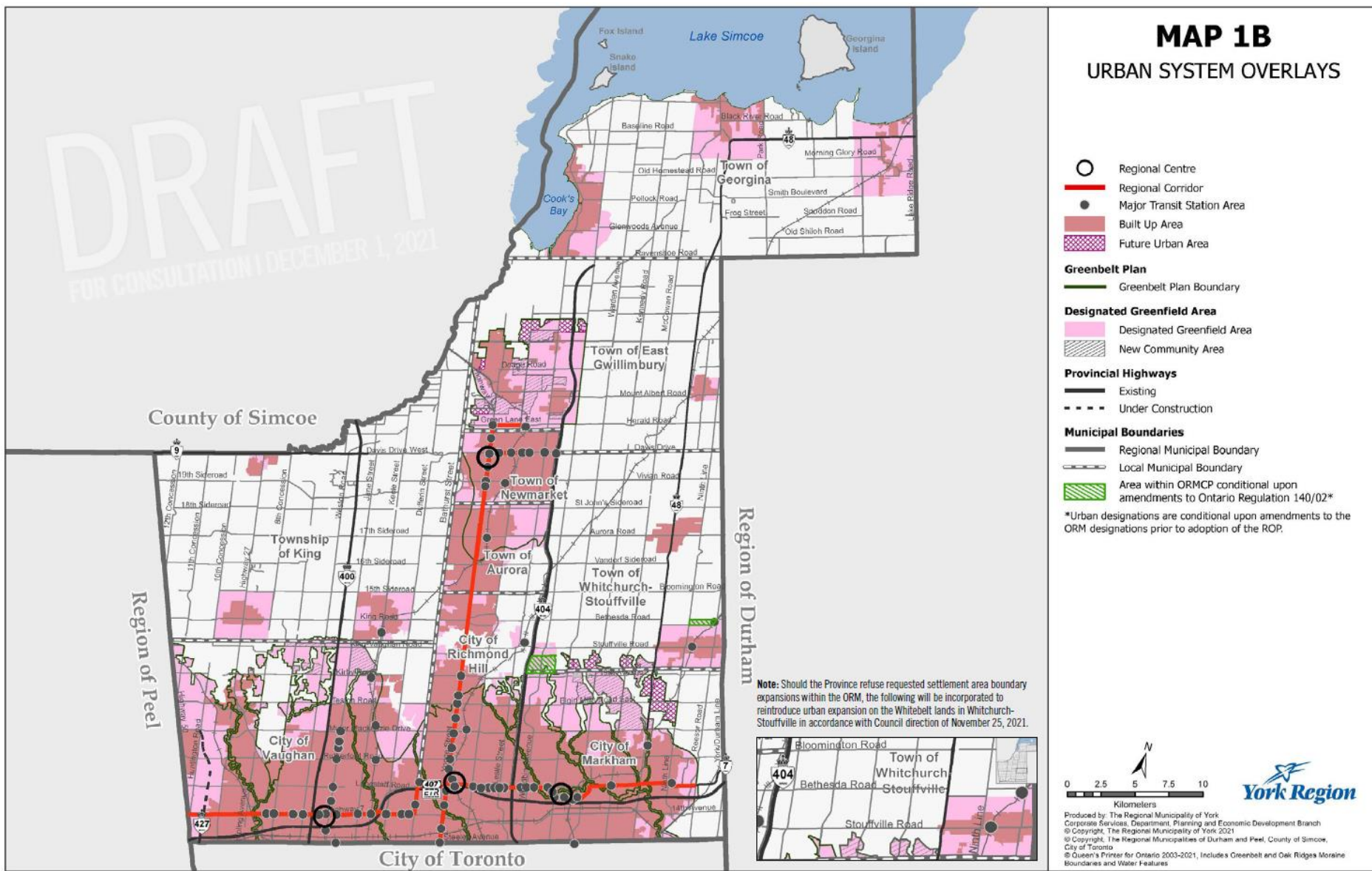


Produced by: The Regional Municipality of York
Corporate Services, Department, Planning and Economic Development Branch
© Copyright, The Regional Municipality of York 2021
© Copyright, The Regional Municipalities of Durham and Peel, County of Simcoe,
City of Toronto
© Queen's Printer for Ontario 2003-2021. Includes Greenbelt and Oak Ridges Moraine
Boundaries and Water Features

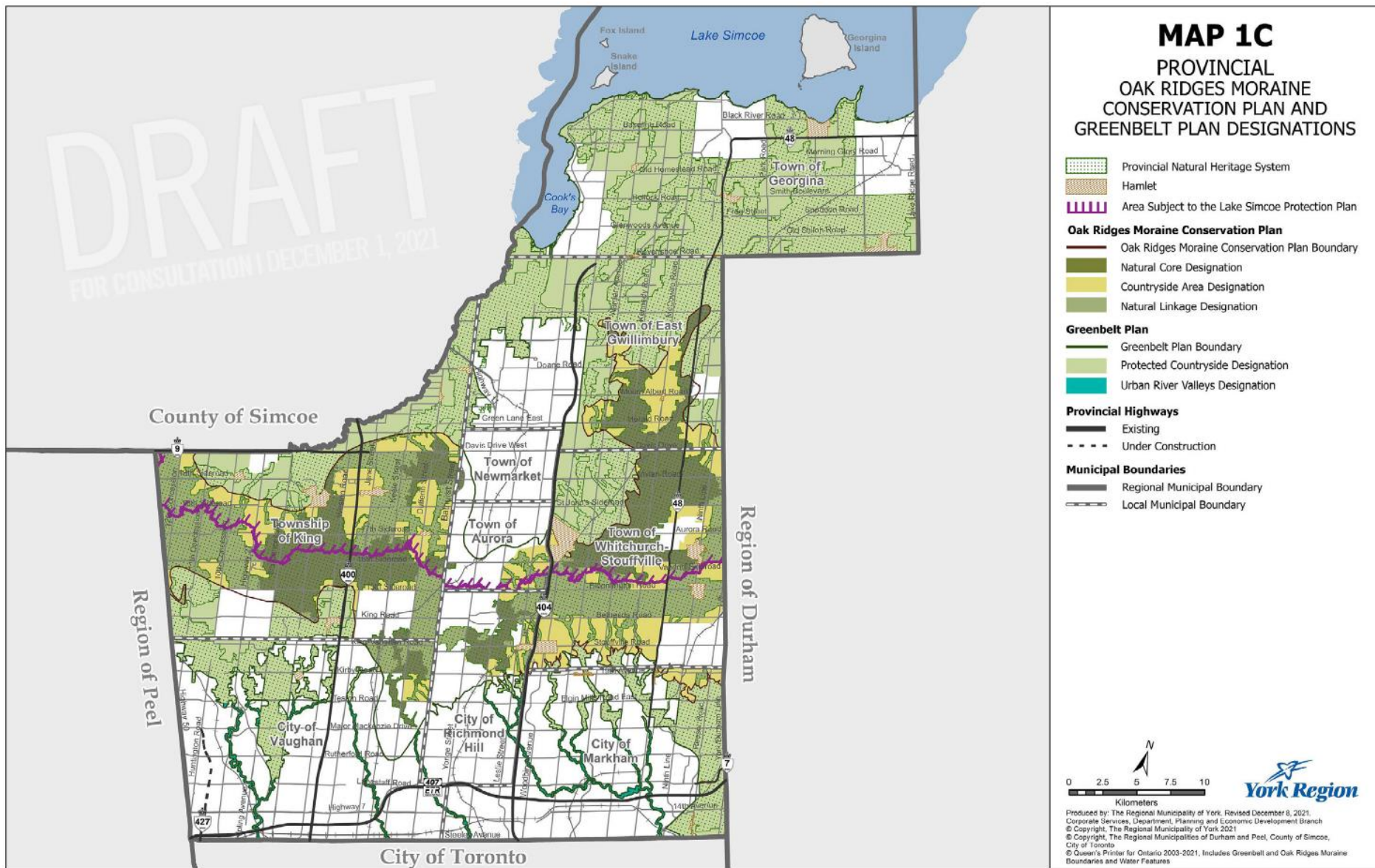
MAP 1A — LAND USE DESIGNATIONS



MAP 1B — URBAN SYSTEM OVERLAYS



MAP 1C – PROVINCIAL ORM AND GB DESIGNATIONS



YORK REGION POPULATION AND EMPLOYMENT FORECASTS

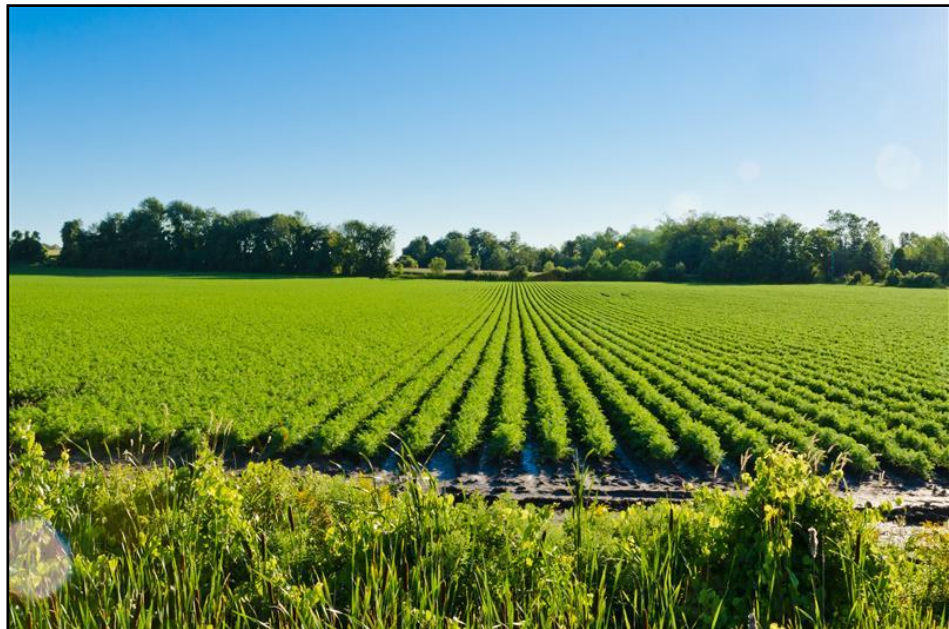
Table 1 – York Region Population and Employment Forecast by Local Municipality

Municipality		2016	2021	2031	2041	2051
Aurora	Population	57,200	64,300	72,700	78,400	84,700
	Employment	27,300	29,900	33,800	37,600	41,300
East Gwillimbury	Population	24,700	36,500	59,300	82,000	127,600
	Employment	9,500	10,300	16,800	26,500	43,800
Georgina	Population	46,800	49,300	57,200	65,700	70,100
	Employment	9,300	9,900	13,100	17,400	20,700
King	Population	25,300	28,300	35,300	42,500	50,000
	Employment	9,600	9,800	11,700	14,000	16,500
Markham	Population	339,100	351,800	416,100	504,500	608,500
	Employment	182,000	193,200	224,000	262,000	301,700
Newmarket	Population	86,800	90,800	97,400	102,700	115,900
	Employment	45,000	49,200	51,800	54,200	58,500
Richmond Hill	Population	201,000	213,700	248,500	282,800	319,600
	Employment	78,800	86,000	97,000	109,100	122,800
Vaughan	Population	315,700	341,600	401,000	490,700	570,400
	Employment	222,200	240,100	277,900	315,300	351,500
Whitchurch-Stouffville	Population	47,300	50,300	60,300	68,900	88,100
	Employment	15,400	16,900	20,300	24,600	34,600
York Region	Population	1,143,900	1,226,600	1,447,800	1,718,200	2,034,900
	Employment	599,100	644,700	746,400	860,500	991,400

Please note forecasts in this table reflect the motions adopted by Council on October 21, 2021. Should the Province refuse requested settlement area boundary expansions within the ORM, minor updates to this table would be required to reintroduce urban expansion on the whitebelt lands in Whitchurch-Stouffville in accordance with Council direction of November 25, 2021.

CONTINUED FOCUS ON STRONG NATURAL HERITAGE AND AGRICULTURAL SYSTEMS

- Implementation of Provincial natural heritage and agricultural systems
- Integrated and streamlined approach
- Updated mapping



NEXT STEPS

TARGETED ADOPTION OF THE REGIONAL OFFICIAL PLAN

November 2021 - May 2022

- Engagement on Draft ROP

March 31, 2022

- Proactive comments due for consideration of the draft ROP

May 2022

- Statutory Public Meeting and Open House

June 2022

- Draft ROP to Council for Adoption
- Submit Draft ROP to Province for final approval

July 2022

- Provincial deadline for MCR

FEEDBACK ON THE DRAFT ROP

- Public engagement campaign:
 - Refreshed web pages
 - Survey
 - Virtual open house
 - Social media
- PAC input on the draft ROP policies and maps

Thank You

