

HOUSING YORK INC. ACTIVITY UPDATE



Presented by:
Kathy Milsom, General Manager
January 20, 2022

2021 BUSINESS PLAN FISCAL YEAR-END UPDATE

- Commitments have been largely accomplished despite considerable ongoing challenges from the pandemic
- 85% of actions completed, up from 28% at end of third quarter
- 85% of targets met or exceeded
- Remaining 15% of actions, delayed or deferred due to COVID-related operational pressures, will be completed in 2022
- Highlights noted in attachment to report

2021 BUSINESS PLAN FISCAL YEAR-END UPDATE



PRIORITY 1:

Expanded
Housing Portfolio

- Completed development concepts for two Region-owned sites in the City of Markham and Town of Newmarket, exceeding target
- Received Council approval and Board support to establish a Community Housing Development Master Plan, meeting target



PRIORITY 2:

Inclusive Communities and
Successful Tenancies

- Engaged consultant and established methodology for 2022 resident surveys, meeting target
- Payment plan options and supports offered to all households in arrears and preserved 98.5% of these tenancies, exceeding target of 97%



PRIORITY 3:

Financial
Sustainability

- Lifecycle analysis found 96% of building components over \$50,000 met or exceeded life expectancy, exceeding target of 90%
- Selected new service provider for elevator maintenance, utilizing new request for proposal process

TENANT INSURANCE PROTECTS YOU

Everyone should have tenant insurance



YOUR BELONGINGS



LIVING EXPENSES



LIABILITY CLAIMS

FLU SHOT CLINICS AT HYI SITES

- Dunlop Pines/Dunlop Place Seniors' Buildings – City of Richmond Hill
- Rosetown Seniors' Building – City of Richmond Hill
- Hamilton Place Seniors' Building – Town of Newmarket
- Mount Albert United Church Seniors' Building – Town of East Gwillimbury
- Our Lady of Smolensk Seniors' Building – Town of Georgina



AFFORDABLE HOUSING DEVELOPMENTS

Unionville Commons, City of Markham



TRANSITIONAL HOUSING - SUTTON YOUTH SHELTER, TOWN OF GEORGINA

Concrete installation and block foundation walls

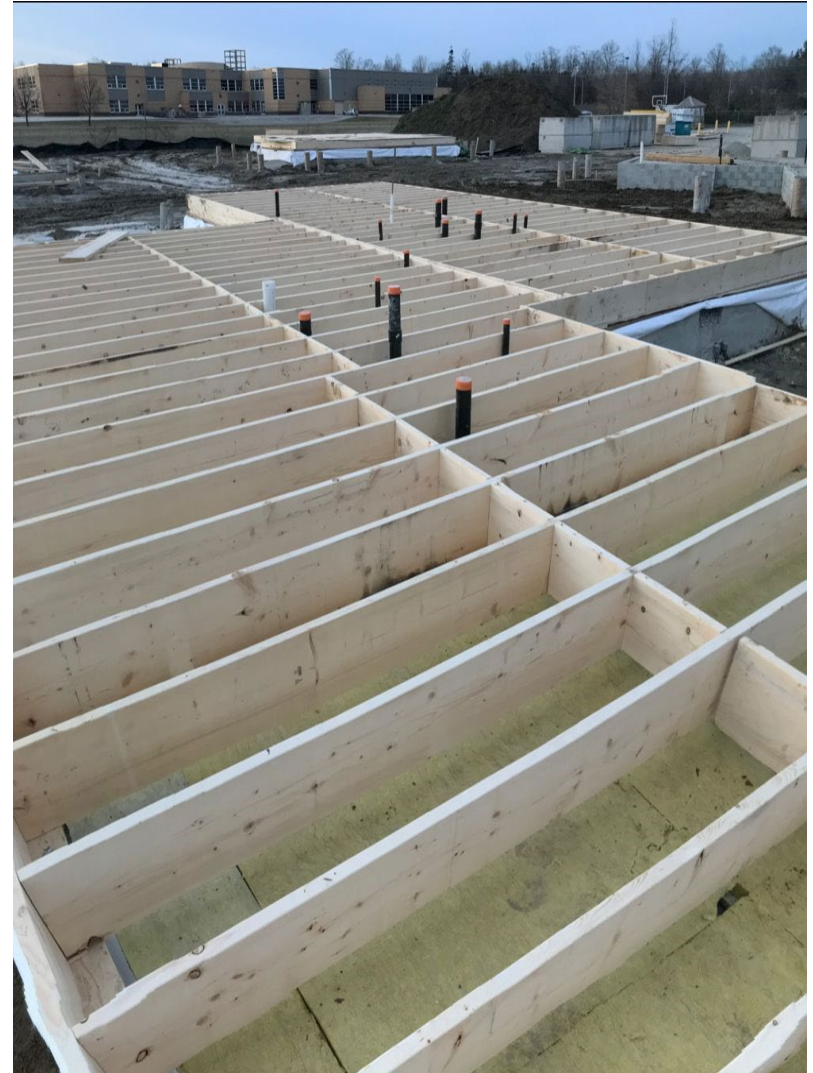


TRANSITIONAL HOUSING - SUTTON YOUTH SHELTER, TOWN OF GEORGINA

Rigid insulation and vapour barrier



Structural framing of floors



TRANSITIONAL HOUSING - LEEDER PLACE, TOWN OF EAST GWILLIMBURY

Cross-laminated timber
Wall modules – fabrication line



Cross-laminated timber
Modular panels – loading area



TRANSITIONAL HOUSING - LEEDER PLACE, TOWN OF EAST GWILLIMBURY

Concrete installation in progress



TRANSITIONAL HOUSING - LEEDER PLACE, TOWN OF EAST GWILLIMBURY



Cross-laminated timber modular wall and floor panels



THANK YOU

For more information:

Kathy Milsom

General Manager, Housing Services

kathy.milsom@york.ca

905-830-4444 ext. 72091

13536454

