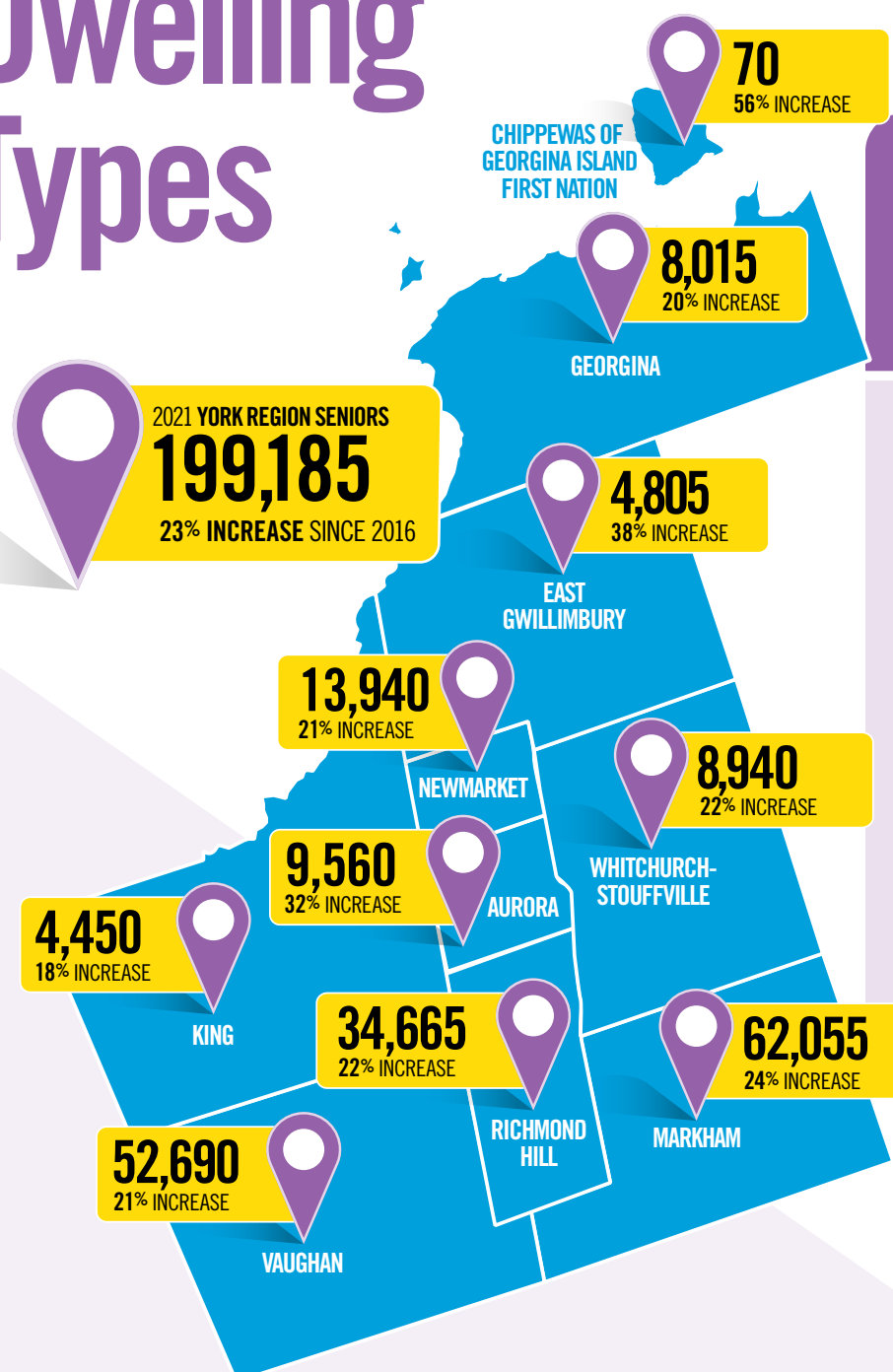


# Age, Sex, Gender and Dwelling Types



## Facts at a Glance

### York Region 2021 Census Age, Sex, Gender and Dwelling Types by Local Municipality

For the first time, the number of York Region residents aged **65+** was **greater than the number of children younger than 15**

**70 to 74** year old residents were the **fastest growing five year age group** from 2016 to 2021, growing by 43% or 15,915 people

**14.2%** of York Region residents are **close to retirement age** (55 to 64) in 2021, compared to just 4.4% in 2001

While the proportion of **single-detached dwellings** in York Region decreased from 75% to 62% between 2001 and 2021 they continue to be the **most common dwelling type** in the Region

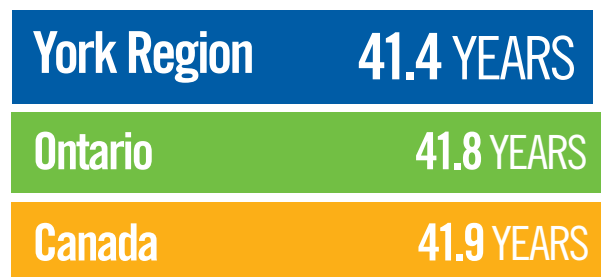
**Apartment units** were the **fastest growing** structure type since 2016, **increasing by 25% or 12,025 units**

**Note:** All population figures do not include the census undercoverage. Totals may not add up due to rounding.

Chippewas of Georgina Island First Nation is independent of The Regional Municipality of York. The Chippewas of Georgina Island are important neighbours and we have included their population data in the Census bulletin. York Region census dwelling counts do not include the Census Subdivision of Georgina Island.

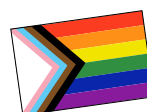
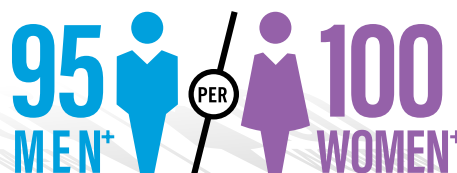
## 2021 Average Age

In York Region, Ontario and Canada



## 2021 York Region Population

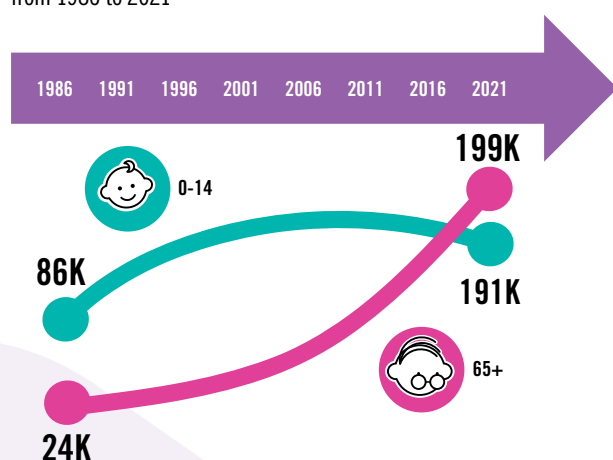
By gender<sup>1</sup>, proportion of men+ to women+



**Did you know** that starting in 2021, gender was included in the census questionnaire? To protect confidentiality, data may be aggregated under the “Men+” and “Women+” gender categories.

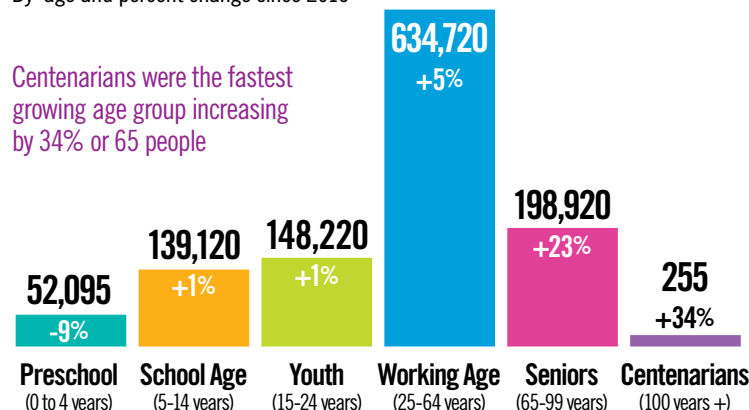
## 2021 Children and Seniors

Growth in children (0 to 14) and seniors (65+) growth from 1986 to 2021



## 2021 York Region Population

By age and percent change since 2016



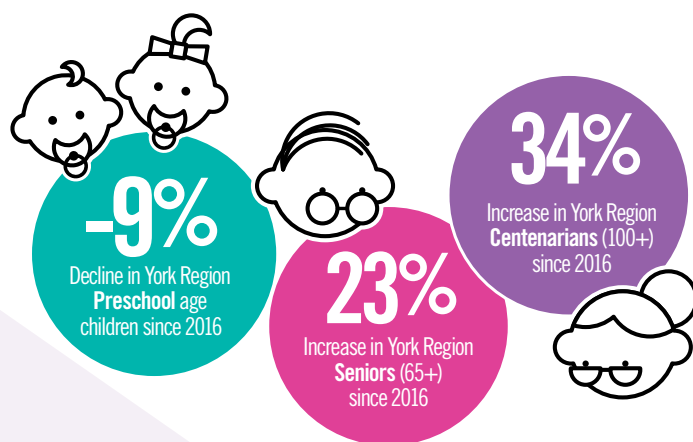
Centenarians were the fastest growing age group increasing by 34% or 65 people

## York Region Labour Force

Replacement Ratio For 2001 to 2021



Labour Force Replacement Ratio - refers to the number of people expected to enter the workforce (aged 15-24) compared to those expected to leave it (aged 55-64).



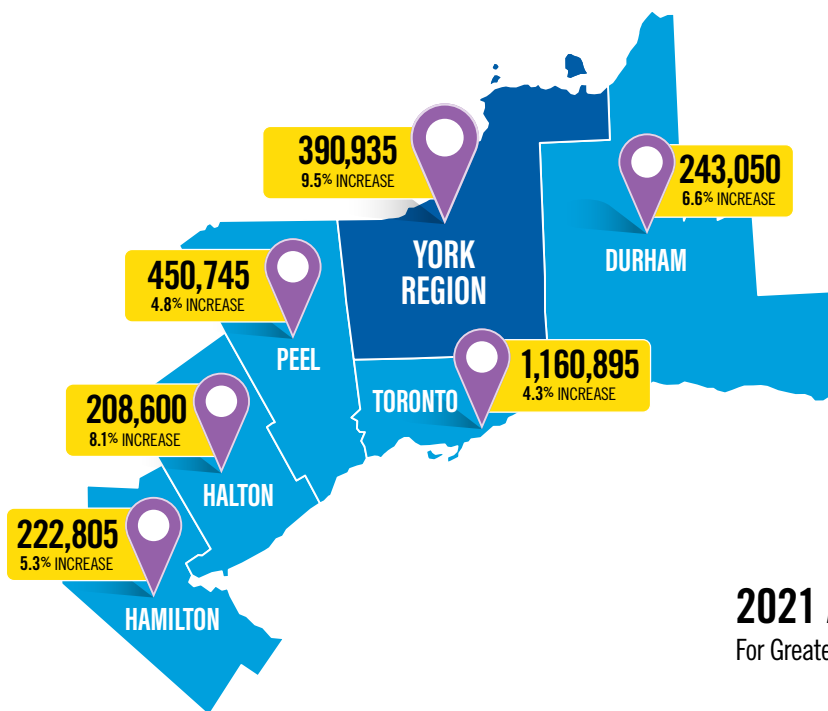
<sup>1</sup> **Gender** - refers to an individual's personal and social identity as a man, woman or non-binary person (a person who is not exclusively a man or a woman). Individuals in the category “non-binary persons” are distributed into the other two gender categories and are denoted by the “+” symbol.

“Men+” includes men and boys, as well as some non-binary persons.

“Women+” includes women and girls, as well as some non-binary persons.

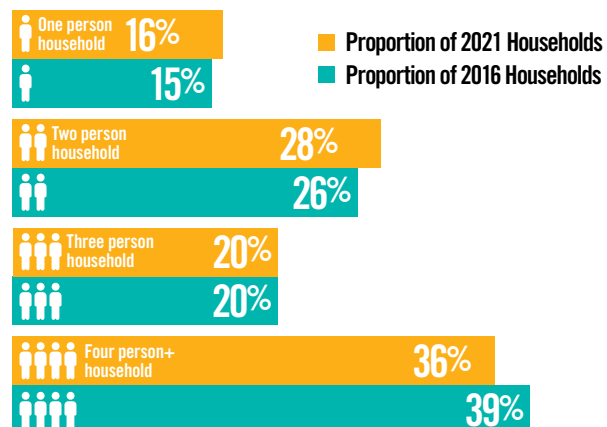
## 2021 Total Dwelling Units<sup>2</sup>

For Greater Toronto and Hamilton Area (GTHA)



## York Region Households By Household Size

Proportion of one and two person households has increased since 2016



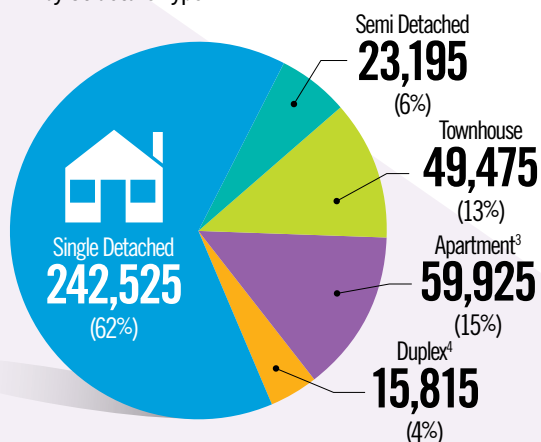
## 2021 Average Household Size

For Greater Toronto and Hamilton Area



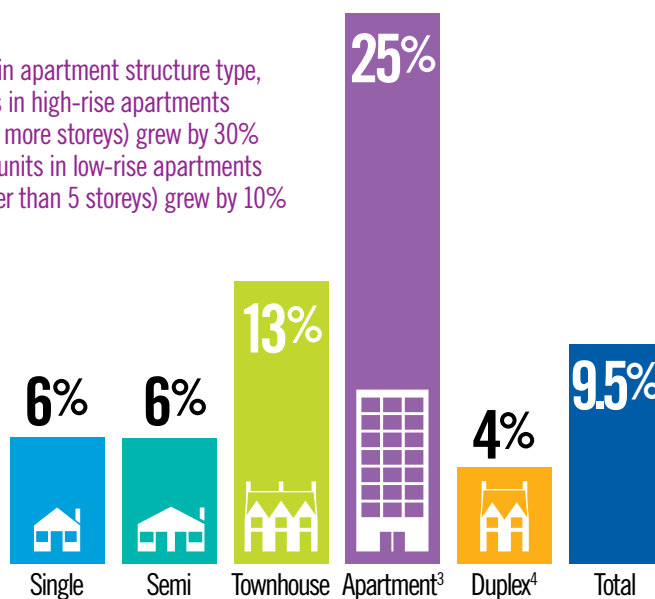
## 2021 York Region Dwellings

by Structure Type



## 2021 Growth Rate by Structure Type of Dwelling

Within apartment structure type, units in high-rise apartments (5 or more storeys) grew by 30% and units in low-rise apartments (fewer than 5 storeys) grew by 10%



<sup>2</sup> Dwelling unit - Refers to units that are occupied

<sup>3</sup> Apartment - Includes all apartments which can be broken down into apartments in a building fewer than 5 storeys and apartment in a building with 5 or more storeys

<sup>4</sup> Duplex - Refers to an apartment or flat in a duplex

## 2021 Population By Age, Local Municipality and % Change since 2016

Municipality	2021 Resident Age									
	Age 0 to 4 Years		Age 5 to 14 Years		Age 15 to 24 Years		Age 25 to 64 Years		Age 65 Years +	
	2021 Population	% Change Since 2016	2021 Population	% Change Since 2016	2021 Population	% Change Since 2016	2021 Population	% Change Since 2016	2021 Population	% Change Since 2016
Aurora	2,975	9%	7,600	7%	7,990	0%	33,915	12%	9,560	32%
Chippewas of Georgina Island First Nation*	15	0%	25	-17%	20	-20%	105	-25%	70	56%
East Gwillimbury	2,215	74%	4,415	55%	3,875	29%	19,325	44%	4,805	38%
Georgina	2,555	2%	5,210	4%	4,890	-13%	26,975	5%	8,015	20%
King	1,260	1%	3,615	13%	3,610	11%	14,395	10%	4,450	18%
Markham	14,350	-16%	39,530	3%	40,895	-4%	181,660	0%	62,055	24%
Newmarket	4,005	-8%	10,515	0%	11,255	-6%	48,215	5%	13,940	21%
Richmond Hill	7,555	-12%	22,420	-7%	26,250	1%	111,145	3%	34,665	22%
Vaughan	14,375	-12%	38,915	-6%	43,995	6%	17,3130	6%	52,690	21%
Whitchurch-Stouffville	2,785	-14%	6,865	13%	5,425	11%	25,850	6%	8,940	22%
<b>York Region</b>	<b>52,090</b>	<b>-9%</b>	<b>139,110</b>	<b>1%</b>	<b>148,205</b>	<b>1%</b>	<b>634,715</b>	<b>5%</b>	<b>199,190</b>	<b>23%</b>

\* Chippewas of Georgina Island First Nation is independent of the Regional Municipality of York. The Chippewas of Georgina Island are important neighbours and we have included their population data in the Census bulletin.

## 2021 Housing Mix By Local Municipality

Municipality		2021 Housing Unit Mix									
		Single Detached		Semi Detached		Townhouse		Apartment		Duplex	
	Total Units	Units	% Share	Units	% Share	Units	% Share	Units	% Share	Units	% Share
Aurora	21,510	12,990	60%	1,490	7%	3,615	17%	2,745	13%	670	3%
East Gwillimbury	11,445	9,310	81%	400	3%	1,110	10%	285	2%	340	3%
Georgina	17,895	14,990	84%	460	3%	785	4%	1,090	6%	570	3%
King	8,970	7,835	87%	150	2%	370	4%	520	6%	95	1%
Markham	110,870	62,290	56%	6,985	6%	15,985	14%	19,540	18%	6,070	5%
Newmarket	30,295	18,295	60%	2,255	7%	3,880	13%	3,870	13%	1,995	7%
Richmond Hill	69,320	39,350	57%	2,665	4%	10,510	15%	14,660	21%	2,135	3%
Vaughan	103,910	65,035	63%	7,960	8%	11,410	11%	16,015	15%	3,490	3%
Whitchurch-Stouffville	16,720	12,430	74%	830	5%	1,810	11%	1,200	7%	450	3%
York Region	390,935	242,525	62%	23,195	6%	49,475	13%	59,925	15%	15,815	4%

For questions please contact York Region Long Range Planning at:  
[futureyork@york.ca](mailto:futureyork@york.ca) or call 1-877-464-9675 ext. 71530

For accessible formats or communication support, please contact Corporate Communications at:  
 1-877-464-9675 ext. 71234 or [yr.corporate.communications@york.ca](mailto:yr.corporate.communications@york.ca)

# Population and Dwelling Counts

## Facts at a Glance

### York Region 2021 Census Population by Local Municipality

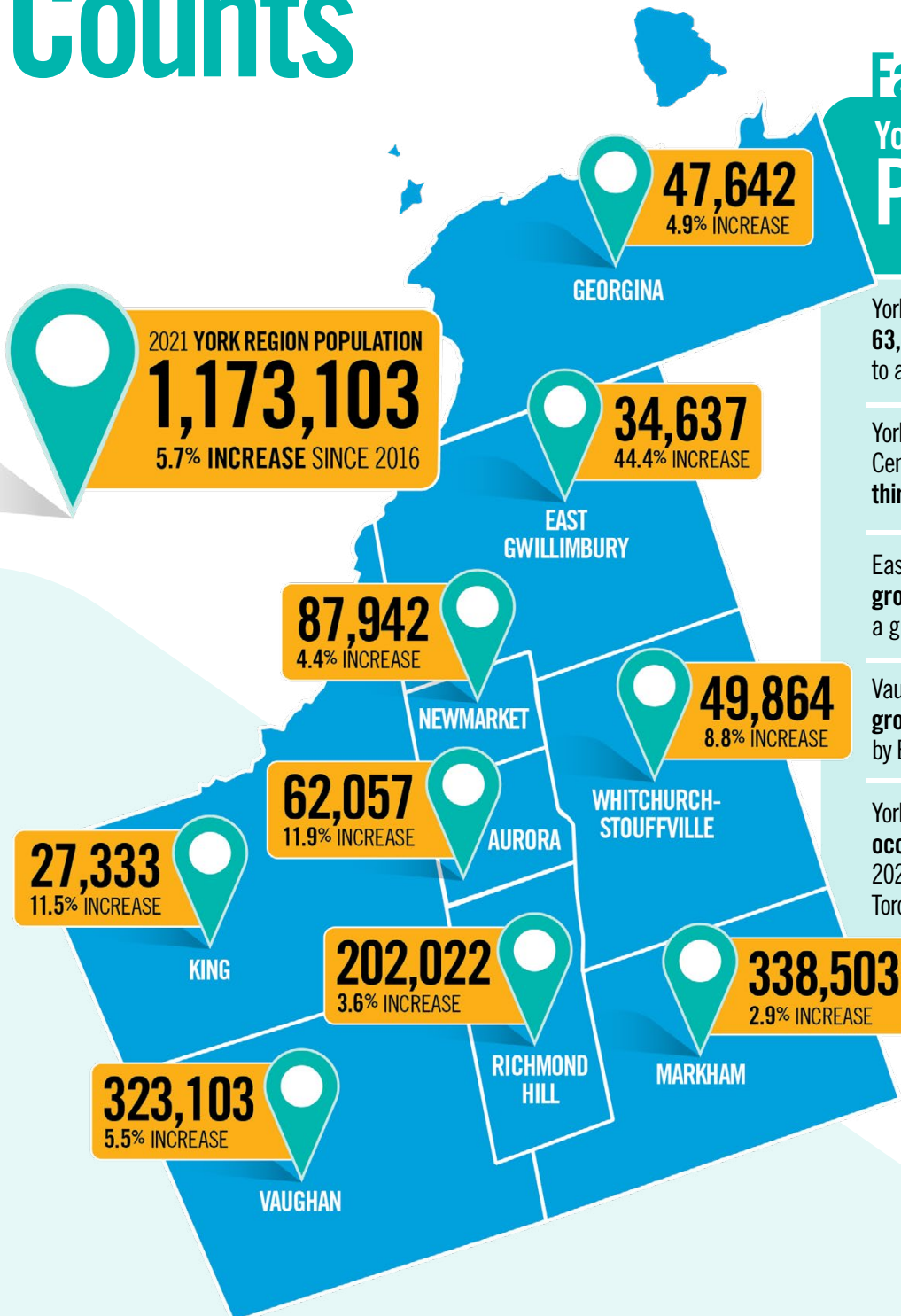
York Region has grown by **63,455 people or 5.7%** since 2016 to a population of **1,173,103** in 2021

York Region is the **seventh-largest** Census Division in Canada and the **third-largest** in Ontario

East Gwillimbury is the **fastest growing municipality in Canada** with a growth rate of **44.4%** since 2016

Vaughan had the **largest population growth** of **16,870 people**, followed by East Gwillimbury and Markham

York Region added **33,956 new occupied dwellings** between 2016 and 2021, **second** to Toronto in the Greater Toronto and Hamilton Area (GTHA)

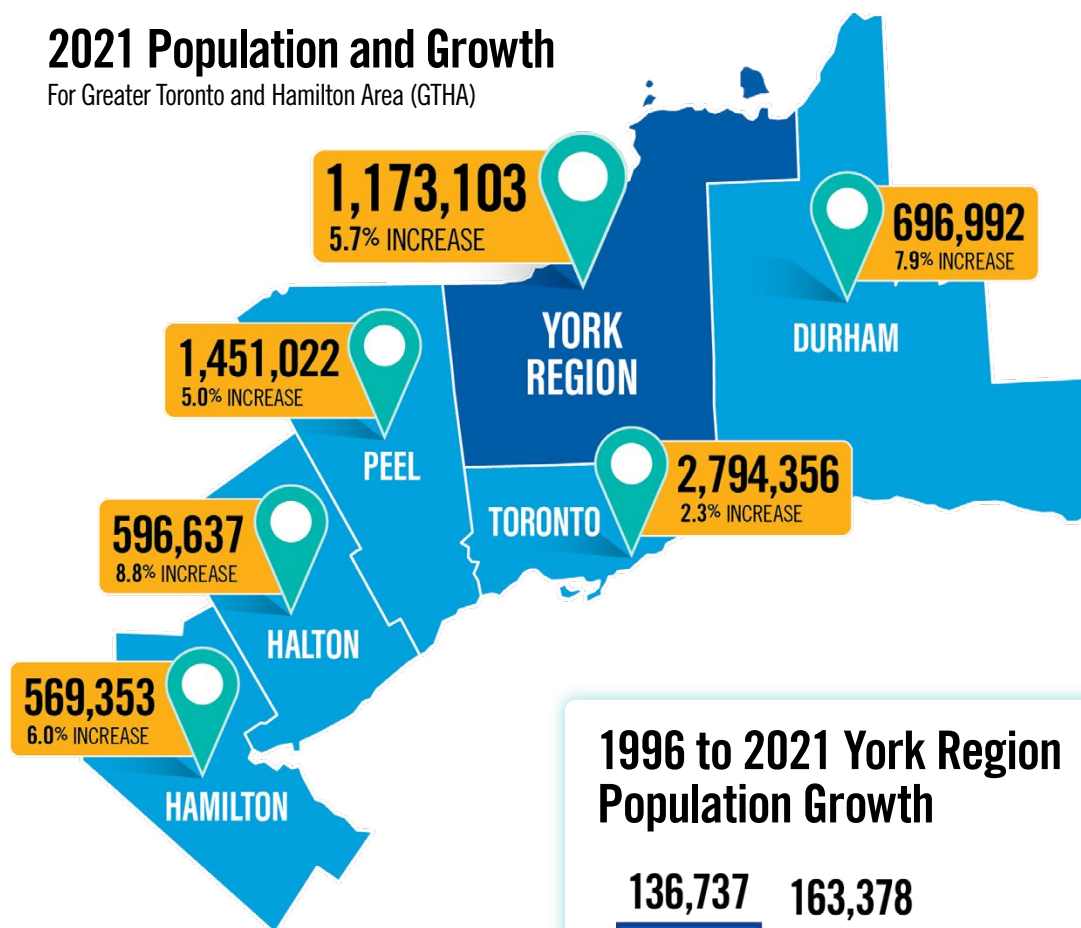


**Note:** York Region census population and dwelling counts do not include the Census Subdivision of Georgina Island. All population figures do not include the census undercoverage. Totals may not add up due to rounding.



# 2021 Population and Growth

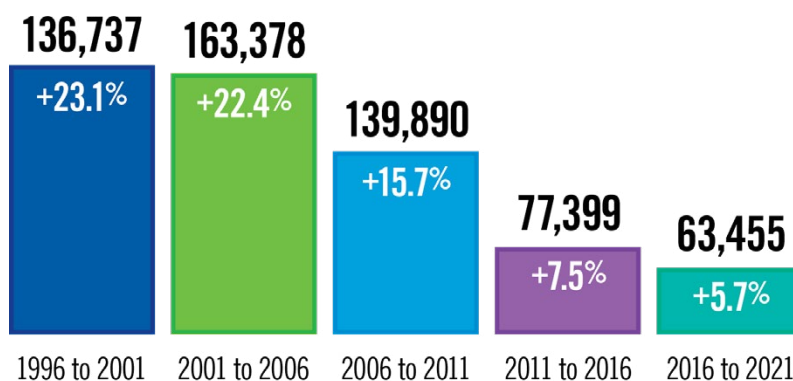
For Greater Toronto and Hamilton Area (GTHA)



York Region is the **fourth fastest growing region** in the GTHA

York Region is the **seventh-largest Census Division in Canada** and the **third-largest in Ontario**

## 1996 to 2021 York Region Population Growth



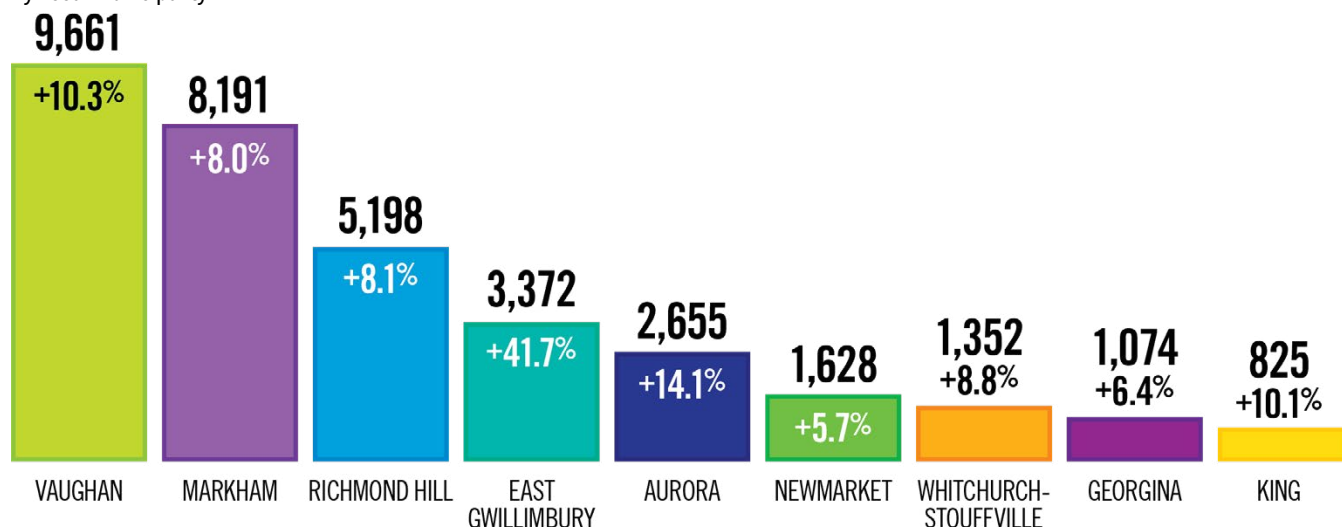
## 2021 Population Growth in Canada: Top Five Municipalities

East Gwillimbury, Ontario is the fastest growing municipality in Canada with a growth rate of 44.4%

- › The Blue Mountains, Ontario at 33.7%
- › Langford, British Columbia at 31.8%
- › Saint-Apolinaire, Quebec at 30.4%
- › Niverville, Manitoba at 29.0%

# 2016 to 2021 York Region Private Dwelling Unit Growth

By Local Municipality



## 2021 Dwelling Unit Growth in York Region: Top Three

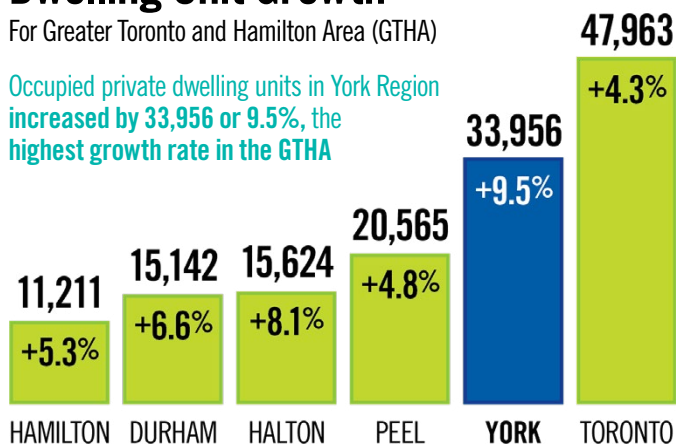
East Gwillimbury, had the highest dwelling unit growth rate at 41.7%

- › Aurora, with a growth rate of 14.1%
- › Vaughan, with a growth rate of 10.3%

## 2016 to 2021 Occupied Private Dwelling Unit Growth

For Greater Toronto and Hamilton Area (GTHA)

Occupied private dwelling units in York Region increased by 33,956 or 9.5%, the highest growth rate in the GTHA



## Definitions

### Census Undercoverage

Refers to those in the population missed by the Census.

### Occupied Dwelling

Refers to a private dwelling unit in which a person or group of persons is permanently residing.

For questions please contact York Region Long Range Planning at: [futureyork@york.ca](mailto:futureyork@york.ca) or call 1-877-464-9675 ext. 71530

For accessible formats or communication support, please contact Corporate Communications at: 1-877-464-9675 ext. 71234 or [yr.corporate.communications@york.ca](mailto:yr.corporate.communications@york.ca)