



2021 YORK REGION

CENSUS REPORT

CENSUS RELEASE BULLETINS

APRIL 2023



TABLE of CONTENTS

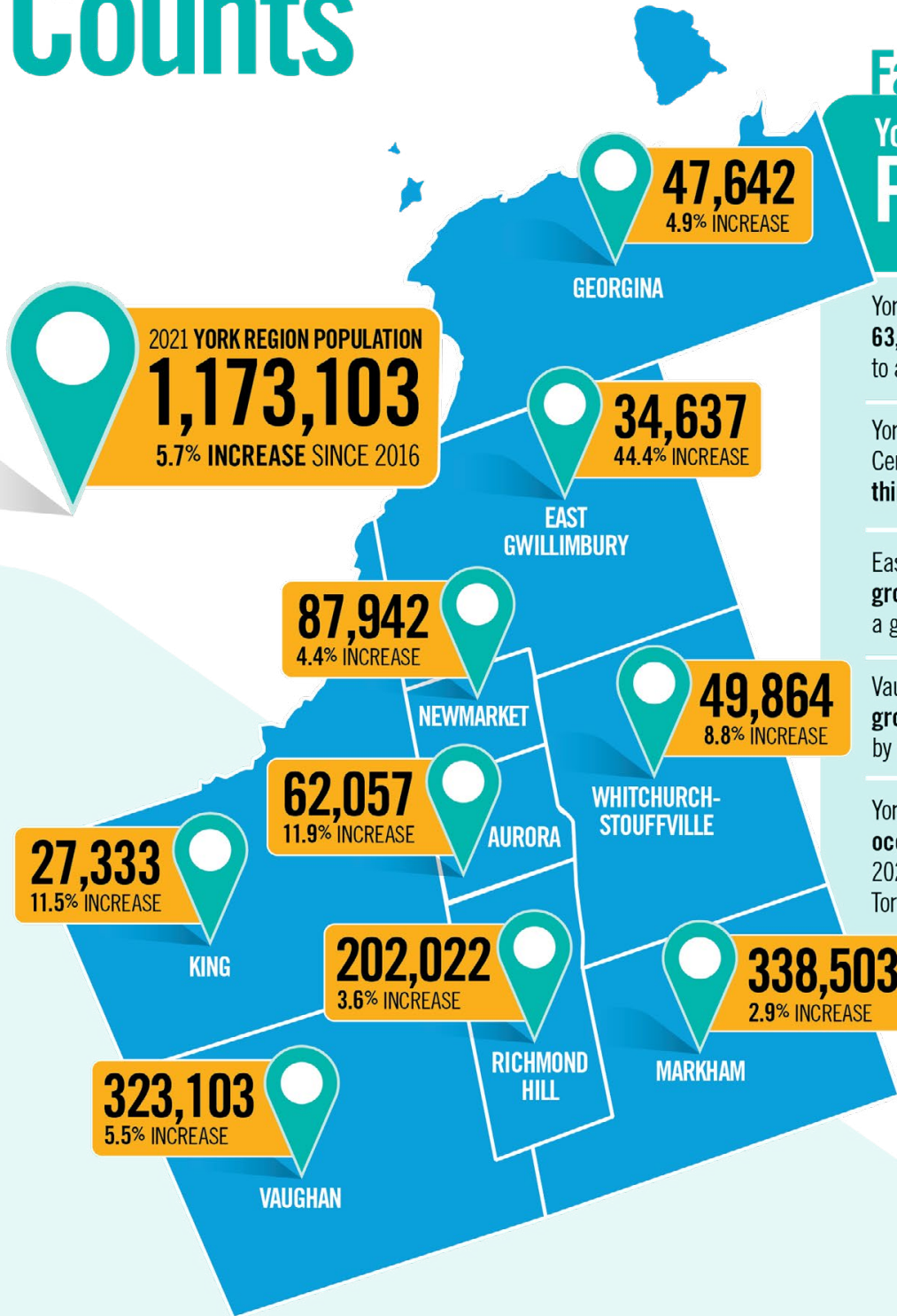


POPULATION and DWELLING COUNTS - YORK REGION 2021 CENSUS RELEASE REPORT	3
AGE, SEX, GENDER and DWELLING TYPE - YORK REGION 2021 CENSUS RELEASE REPORT	6
AGRICULTURE - YORK REGION 2021 CENSUS RELEASE REPORT	10
FAMILIES, HOUSEHOLDS and MARTIAL STATUS - YORK REGION 2021 CENSUS RELEASE REPORT	14
INCOME - YORK REGION 2021 CENSUS RELEASE REPORT	17
LANGUAGE - YORK REGION 2021 CENSUS RELEASE REPORT	21
HOUSING - YORK REGION 2021 CENSUS RELEASE REPORT	25
INDIGENOUS PEOPLES - YORK REGION 2021 CENSUS RELEASE REPORT	29
IMMIGRATION, ETHNOCULTURAL DIVERSITY, RELIGION and MOBILITY - YORK REGION 2021 CENSUS RELEASE REPORT	31
LABOUR, EDUCATION and JOURNEY to WORK - YORK REGION 2021 CENSUS RELEASE REPORT	35

Population and Dwelling Counts

Facts at a Glance

York Region 2021 Census Population by Local Municipality



York Region has grown by **63,455 people or 5.7%** since 2016 to a population of **1,173,103** in 2021

York Region is the **seventh-largest** Census Division in Canada and the **third-largest** in Ontario

East Gwillimbury is the **fastest growing municipality in Canada** with a growth rate of **44.4%** since 2016

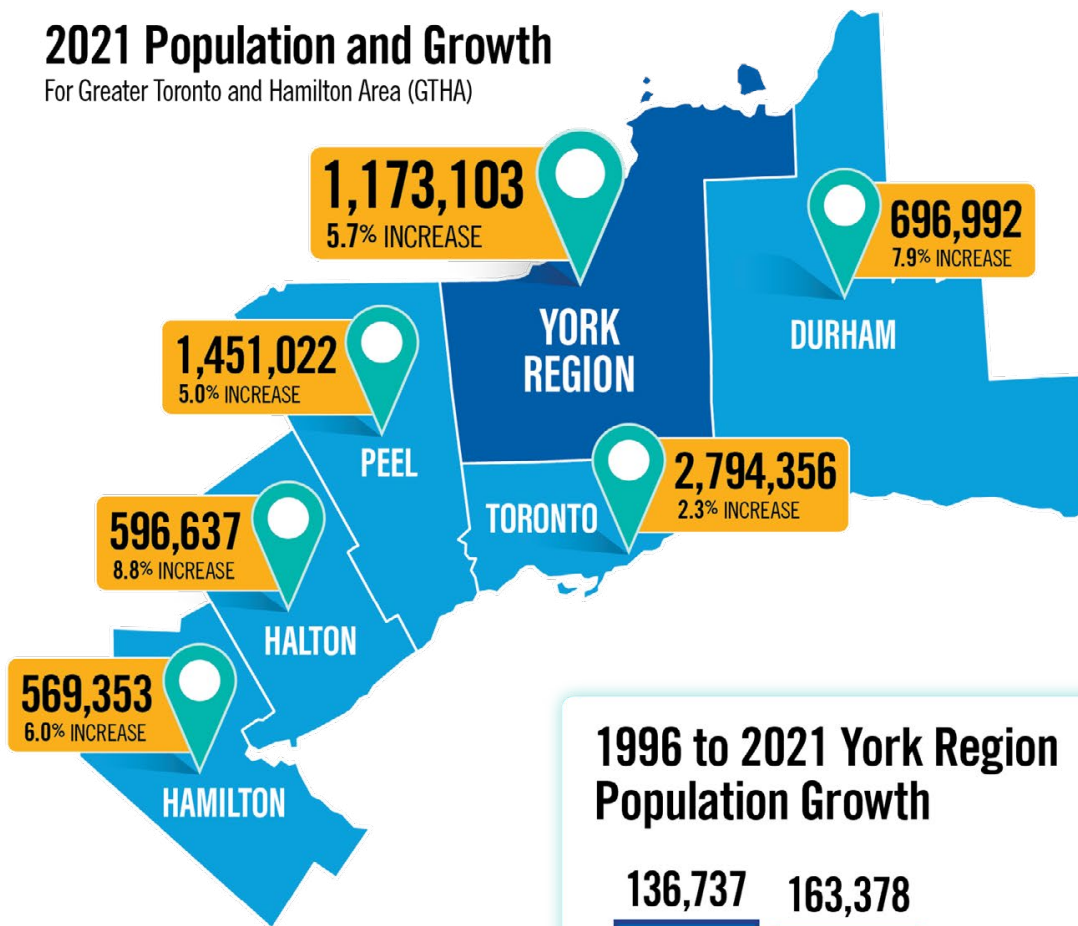
Vaughan had the **largest population growth** of **16,870 people**, followed by East Gwillimbury and Markham

York Region added **33,956 new occupied dwellings** between 2016 and 2021, **second** to Toronto in the Greater Toronto and Hamilton Area (GTHA)

Note: York Region census population and dwelling counts do not include the Census Subdivision of Georgina Island. All population figures do not include the census undercoverage. Totals may not add up due to rounding.

2021 Population and Growth

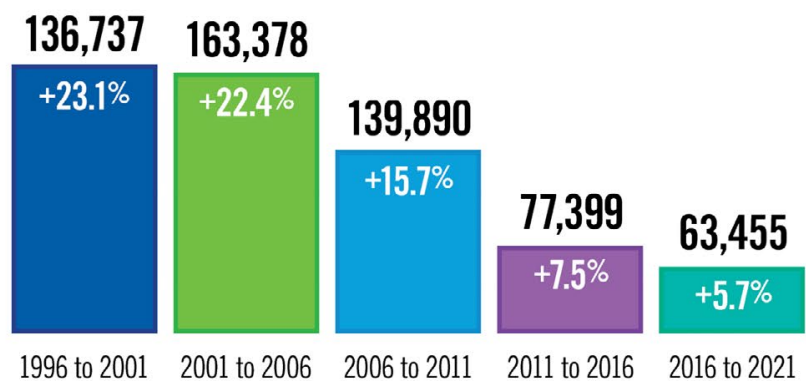
For Greater Toronto and Hamilton Area (GTHA)



York Region is the **fourth fastest growing region** in the GTHA

York Region is the **seventh-largest Census Division in Canada** and the **third-largest in Ontario**

1996 to 2021 York Region Population Growth



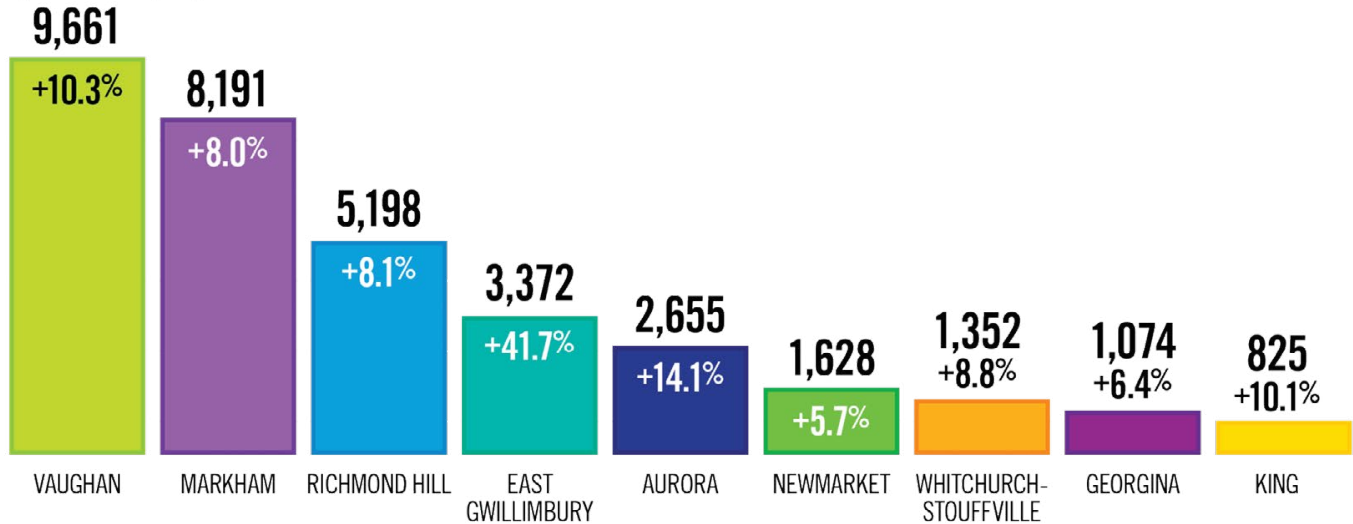
2021 Population Growth in Canada: Top Five Municipalities

East Gwillimbury, Ontario is the fastest growing municipality in Canada with a growth rate of 44.4%

- > The Blue Mountains, Ontario at 33.7%
- > Langford, British Columbia at 31.8%
- > Saint-Apolinaire, Quebec at 30.4%
- > Niverville, Manitoba at 29.0%

2016 to 2021 York Region Private Dwelling Unit Growth

By Local Municipality



2021 Dwelling Unit Growth in York Region: Top Three

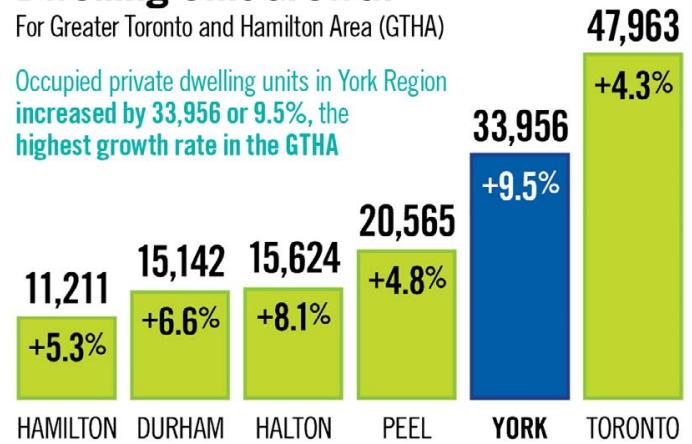
East Gwillimbury, had the highest dwelling unit growth rate at 41.7%

- › Aurora, with a growth rate of 14.1%
- › Vaughan, with a growth rate of 10.3%

2016 to 2021 Occupied Private Dwelling Unit Growth

For Greater Toronto and Hamilton Area (GTHA)

Occupied private dwelling units in York Region increased by 33,956 or 9.5%, the highest growth rate in the GTHA



Definitions

Census Undercoverage

Refers to those in the population missed by the Census.

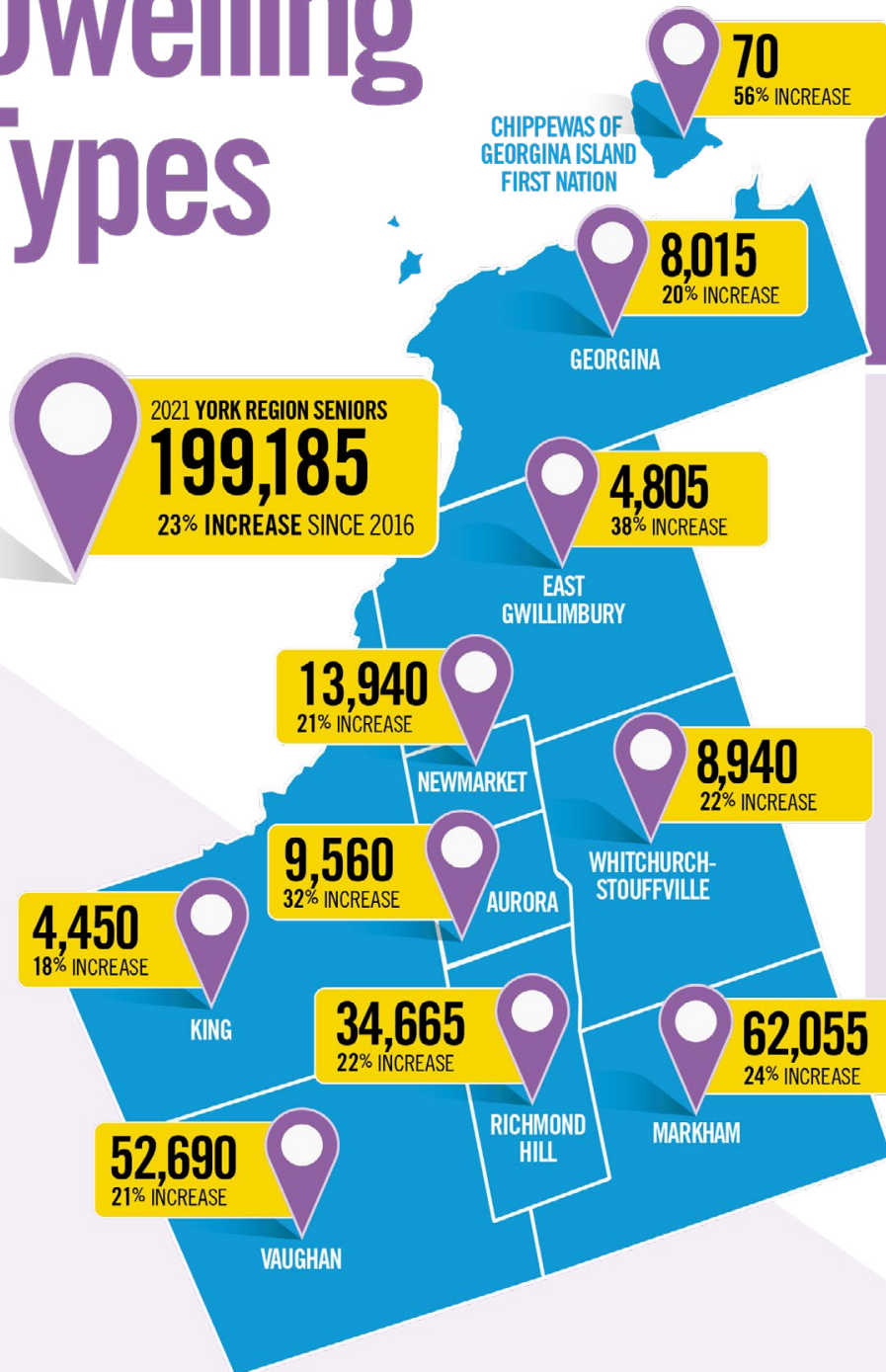
Occupied Dwelling

Refers to a private dwelling unit in which a person or group of persons is permanently residing.

For questions please contact York Region Long Range Planning at: futureyork@york.ca or call 1-877-464-9675 ext. 71530

For accessible formats or communication support, please contact Corporate Communications at: 1-877-464-9675 ext. 71234 or yr.corporate.communications@york.ca

Age, Sex, Gender and Dwelling Types



Facts at a Glance

York Region 2021 Census Age, Sex, Gender and Dwelling Types by Local Municipality

For the first time, the number of York Region residents aged **65+** was **greater than the number of children younger than 15**

70 to 74 year old residents were the **fastest growing five year age group** from 2016 to 2021, growing by 43% or 15,915 people

14.2% of York Region residents are **close to retirement age** (55 to 64) in 2021, compared to just 4.4% in 2001

While the proportion of **single-detached dwellings** in York Region decreased from 75% to 62% between 2001 and 2021 they continue to be the **most common dwelling type** in the Region

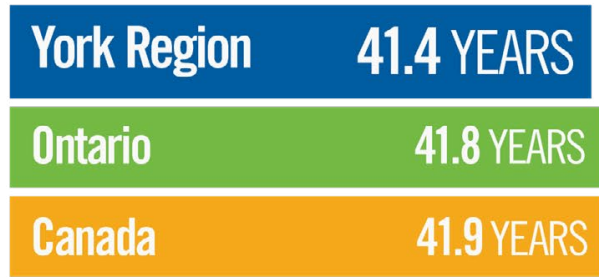
Apartment units were the **fastest growing** structure type since 2016, **increasing by 25%** or 12,025 units

Note: All population figures do not include the census undercoverage. Totals may not add up due to rounding.

Chippewas of Georgina Island First Nation is independent of The Regional Municipality of York. The Chippewas of Georgina Island are important neighbours and we have included their population data in the Census bulletin. York Region census dwelling counts do not include the Census Subdivision of Georgina Island.

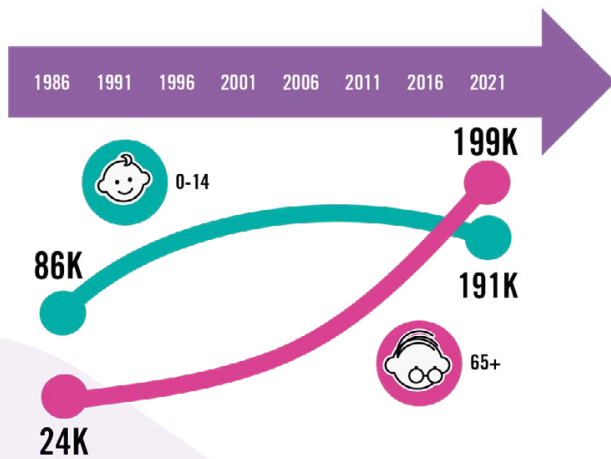
2021 Average Age

In York Region, Ontario and Canada



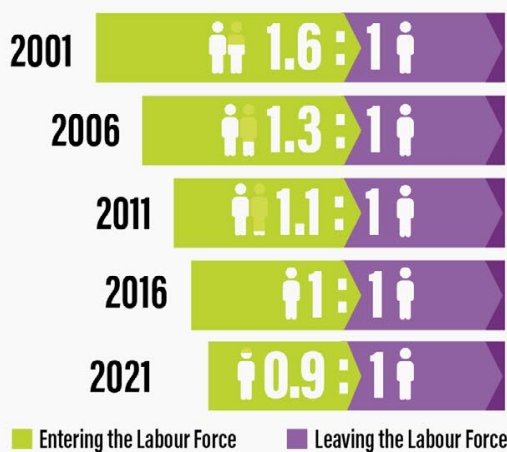
2021 Children and Seniors

Growth in children (0 to 14) and seniors (65+) growth from 1986 to 2021



York Region Labour Force Replacement Ratio

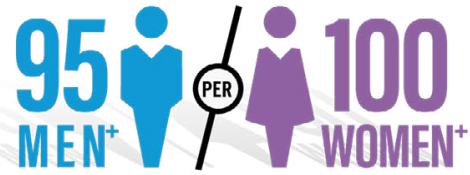
For 2001 to 2021



Labour Force Replacement Ratio - refers to the number of people expected to enter the workforce (aged 15-24) compared to those expected to leave it (aged 55-64).

2021 York Region Population

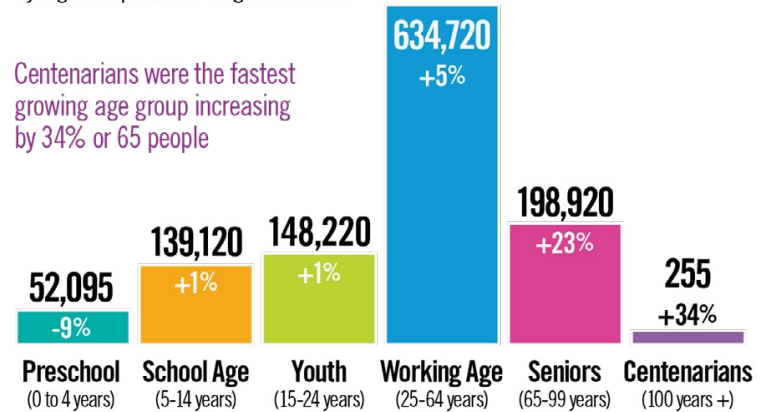
By gender¹, proportion of men+ to women+



Did you know that starting in 2021, gender was included in the census questionnaire? To protect confidentiality, data may be aggregated under the “Men+” and “Women+” gender categories.

2021 York Region Population

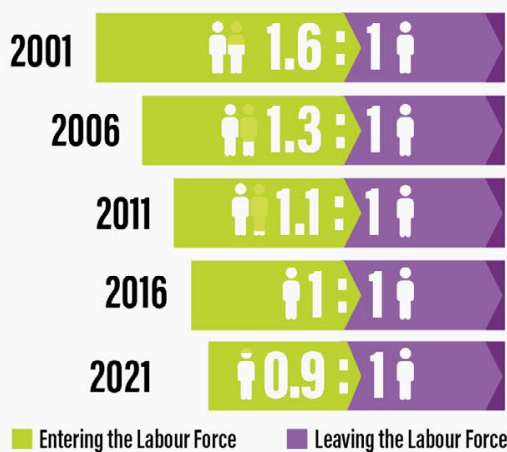
By age and percent change since 2016



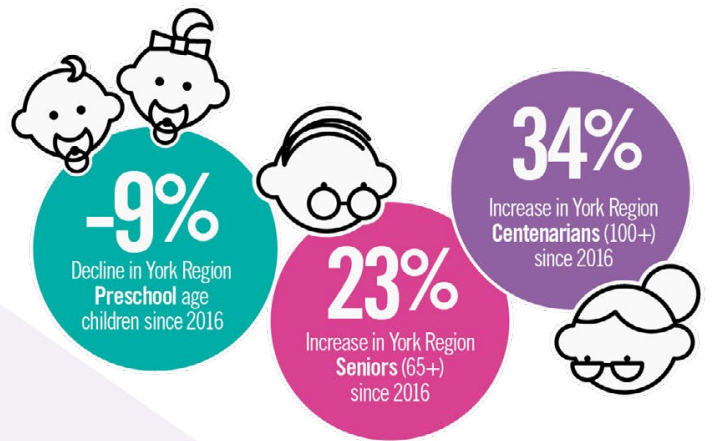
Centenarians were the fastest growing age group increasing by 34% or 65 people

York Region Labour Force Replacement Ratio

For 2001 to 2021



Labour Force Replacement Ratio - refers to the number of people expected to enter the workforce (aged 15-24) compared to those expected to leave it (aged 55-64).



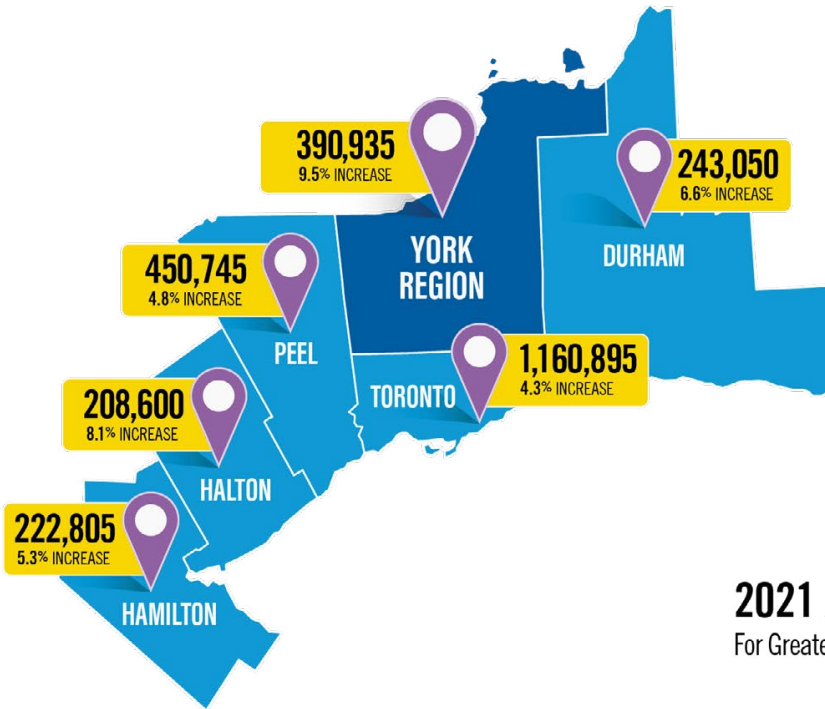
¹ **Gender** - refers to an individual's personal and social identity as a man, woman or non-binary person (a person who is not exclusively a man or a woman). Individuals in the category “non-binary persons” are distributed into the other two gender categories and are denoted by the “+” symbol.

“Men+” includes men and boys, as well as some non-binary persons.

“Women+” includes women and girls, as well as some non-binary persons.

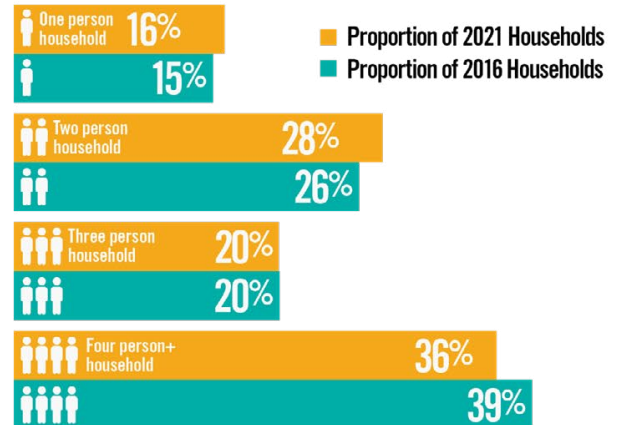
2021 Total Dwelling Units²

For Greater Toronto and Hamilton Area (GTHA)



York Region Households By Household Size

Proportion of one and two person households has increased since 2016



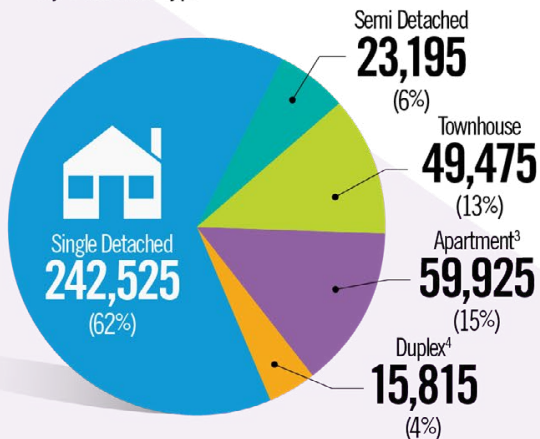
2021 Average Household Size

For Greater Toronto and Hamilton Area



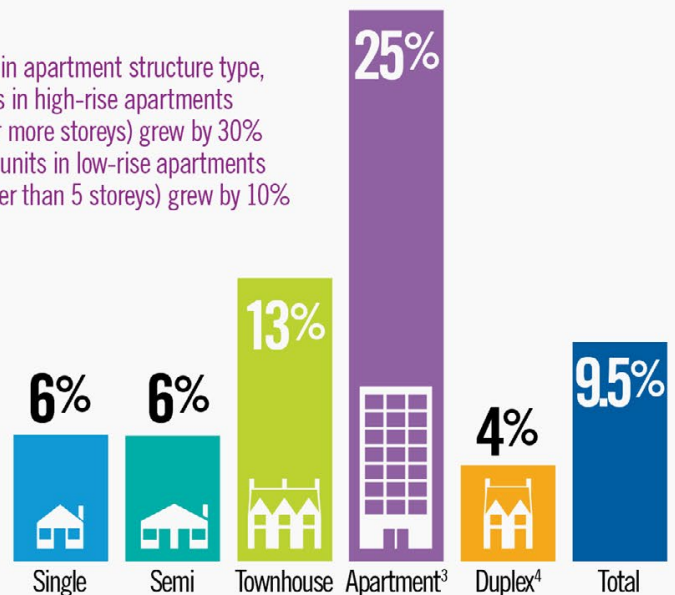
2021 York Region Dwellings

by Structure Type



2021 Growth Rate by Structure Type of Dwelling

Within apartment structure type, units in high-rise apartments (5 or more storeys) grew by 30% and units in low-rise apartments (fewer than 5 storeys) grew by 10%



² Dwelling unit - Refers to units that are occupied

³ Apartment - Includes all apartments which can be broken down into apartments in a building fewer than 5 storeys and apartment in a building with 5 or more storeys

⁴ Duplex - Refers to an apartment or flat in a duplex

2021 Population By Age, Local Municipality and % Change since 2016

Municipality	2021 Resident Age									
	Age 0 to 4 Years		Age 5 to 14 Years		Age 15 to 24 Years		Age 25 to 64 Years		Age 65 Years +	
	2021 Population	% Change Since 2016	2021 Population	% Change Since 2016	2021 Population	% Change Since 2016	2021 Population	% Change Since 2016	2021 Population	% Change Since 2016
Aurora	2,975	9%	7,600	7%	7,990	0%	33,915	12%	9,560	32%
Chippewas of Georgina Island First Nation*	15	0%	25	-17%	20	-20%	105	-25%	70	56%
East Gwillimbury	2,215	74%	4,415	55%	3,875	29%	19,325	44%	4,805	38%
Georgina	2,555	2%	5,210	4%	4,890	-13%	26,975	5%	8,015	20%
King	1,260	1%	3,615	13%	3,610	11%	14,395	10%	4,450	18%
Markham	14,350	-16%	39,530	3%	40,895	-4%	181,660	0%	62,055	24%
Newmarket	4,005	-8%	10,515	0%	11,255	-6%	48,215	5%	13,940	21%
Richmond Hill	7,555	-12%	22,420	-7%	26,250	1%	111,145	3%	34,665	22%
Vaughan	14,375	-12%	38,915	-6%	43,995	6%	17,3130	6%	52,690	21%
Whitchurch-Stouffville	2,785	-14%	6,865	13%	5,425	11%	25,850	6%	8,940	22%
York Region	52,090	-9%	139,110	1%	148,205	1%	634,715	5%	199,190	23%

* Chippewas of Georgina Island First Nation is independent of the Regional Municipality of York. The Chippewas of Georgina Island are important neighbours and we have included their population data in the Census bulletin.

2021 Housing Mix By Local Municipality

Municipality	2021 Housing Unit Mix										
	Total Units	Single Detached		Semi Detached		Townhouse		Apartment		Duplex	
		Units	% Share	Units	% Share	Units	% Share	Units	% Share	Units	% Share
Aurora	21,510	12,990	60%	1,490	7%	3,615	17%	2,745	13%	670	3%
East Gwillimbury	11,445	9,310	81%	400	3%	1,110	10%	285	2%	340	3%
Georgina	17,895	14,990	84%	460	3%	785	4%	1,090	6%	570	3%
King	8,970	7,835	87%	150	2%	370	4%	520	6%	95	1%
Markham	110,870	62,290	56%	6,985	6%	15,985	14%	19,540	18%	6,070	5%
Newmarket	30,295	18,295	60%	2,255	7%	3,880	13%	3,870	13%	1,995	7%
Richmond Hill	69,320	39,350	57%	2,665	4%	10,510	15%	14,660	21%	2,135	3%
Vaughan	103,910	65,035	63%	7,960	8%	11,410	11%	16,015	15%	3,490	3%
Whitchurch-Stouffville	16,720	12,430	74%	830	5%	1,810	11%	1,200	7%	450	3%
York Region	390,935	242,525	62%	23,195	6%	49,475	13%	59,925	15%	15,815	4%

For questions please contact York Region Long Range Planning at: futureyork@york.ca or call 1-877-464-9675 ext. 71530

For accessible formats or communication support, please contact Corporate Communications at: 1-877-464-9675 ext. 71234 or yr.corporate.communications@york.ca

Agriculture

Facts at a Glance

York Region 2021 Census Total Operating Revenues and Farm Area

by Local Municipality

York Region had the **third highest total operating revenues** in the Golden Horseshoe² at **\$2,903 per acre**

From 2016 to 2021, York Region recorded a decrease of **108 farms** (15%) and **8,171 acres** (6%) of farmland

Farmland accounted for 31% of York Region's land area in 2021, down from 32% in 2016

70% of farms in York Region are **less than 130 acres** in size, the average **farm size increased** by 11% to **223 acres** since 2016

70% of farm operators in York Region were over the age of 55, with the average age of a farm operator in 2021 being 60

² Golden Horseshoe in this bulletin refers to the cities and regions that make up the Golden Horseshoe Food and Farming Alliance including Durham, Halton, Hamilton, Peel, Niagara, Toronto and York Region.

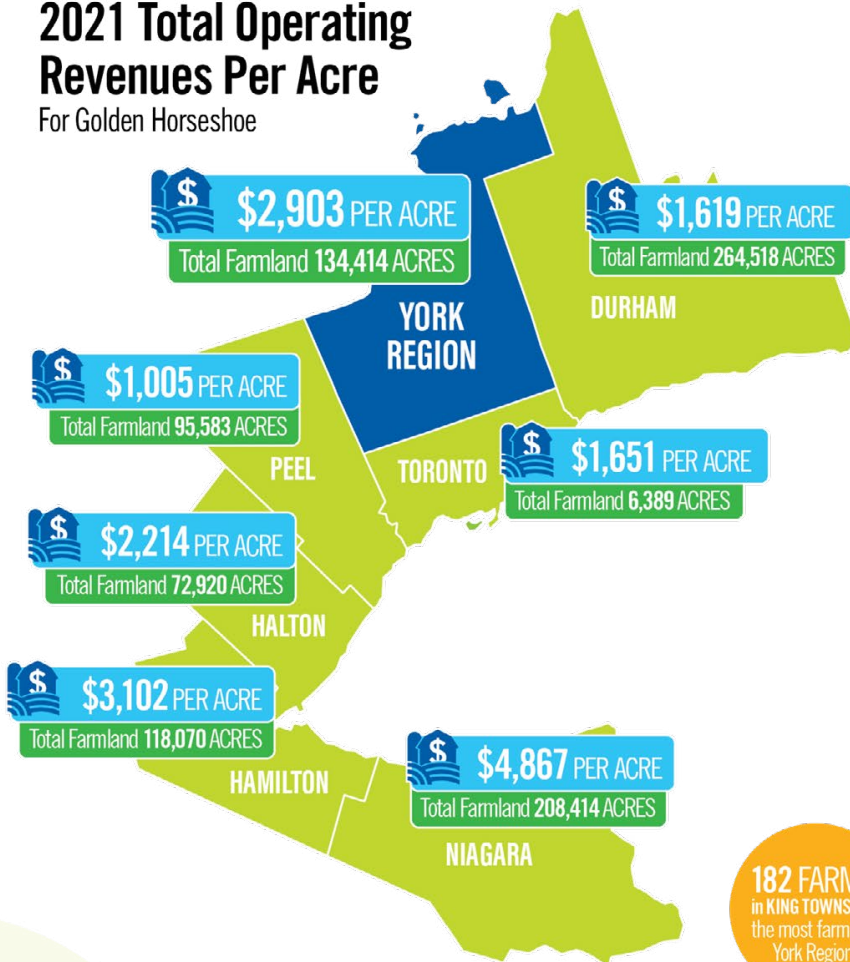


Note: Totals may not add up due to rounding.

* For the 2021 Census of Agriculture, the Towns of Aurora, Newmarket and Richmond Hill are reported as one consolidated Census Subdivision.

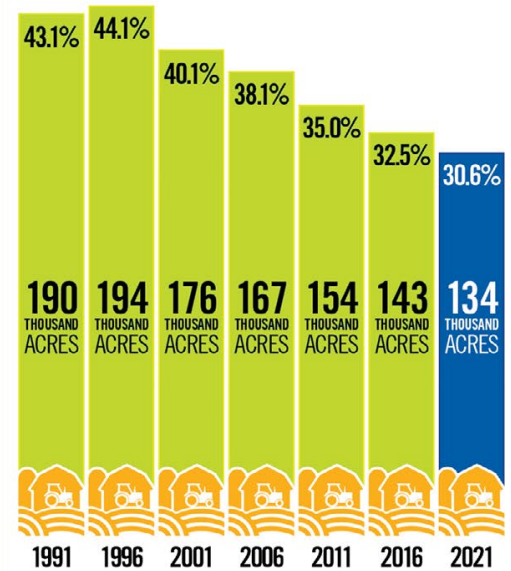
2021 Total Operating Revenues Per Acre

For Golden Horseshoe

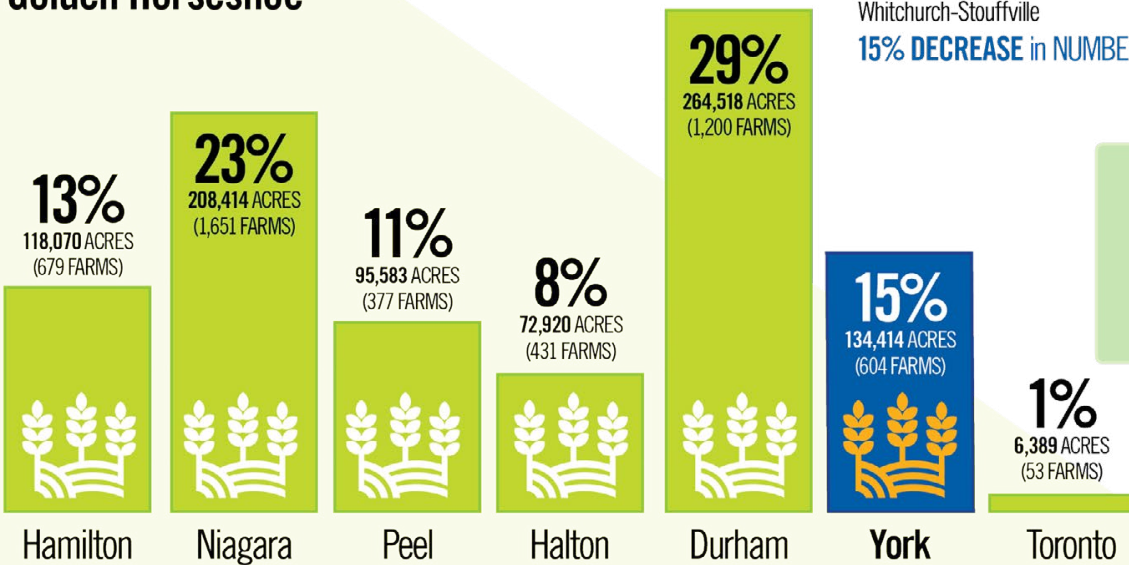


York Region Farm Area by Census Year

% of Total York Region Land Area



Distribution of Farmland Across the Golden Horseshoe*



182 FARMS in KING TOWNSHIP the most farms in York Region



604 Farms in YORK REGION

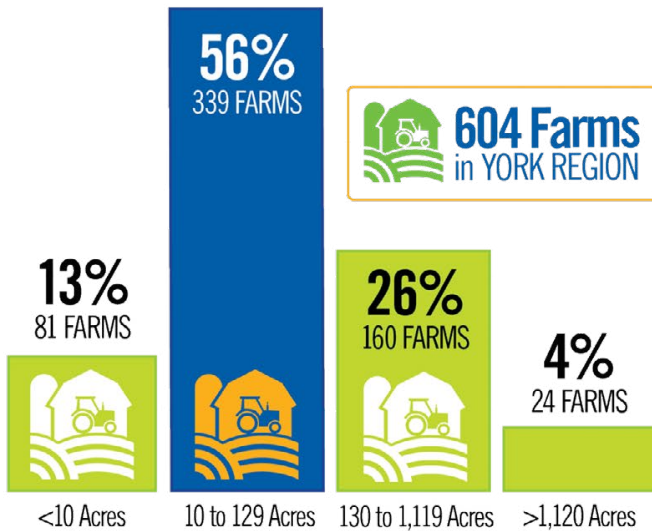
- Aurora, Richmond Hill, Newmarket: 35 FARMS
- East Gwillimbury: 106 FARMS
- Georgina: 102 FARMS
- King: 182 FARMS
- Markham: 44 FARMS
- Vaughan: 52 FARMS
- Whitchurch-Stouffville: 83 FARMS

15% DECREASE in NUMBER of FARMS since 2016

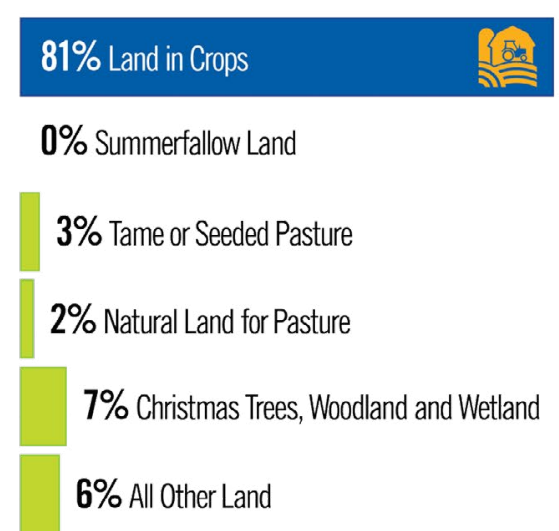
15% of Total Farmlands in the Golden Horseshoe are in York Region

* Golden Horseshoe in this bulletin refers to the cities and regions that make up the Golden Horseshoe Food and Farming Alliance including Durham, Halton, Hamilton, Peel, Niagara, Toronto and York Region.

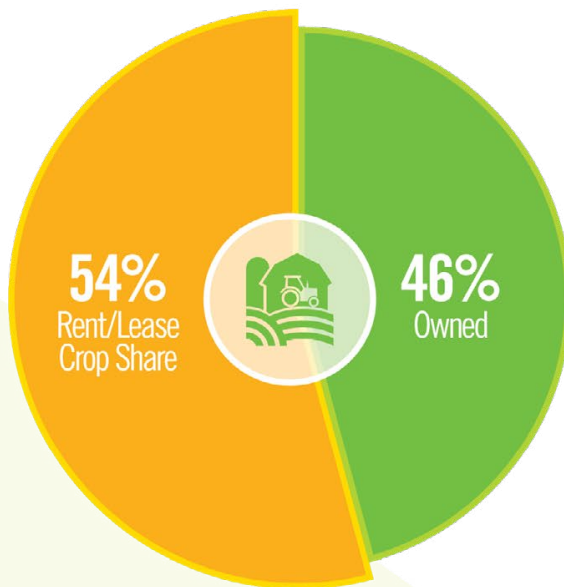
2021 York Region Farms by Size



2021 York Region Farmland Uses



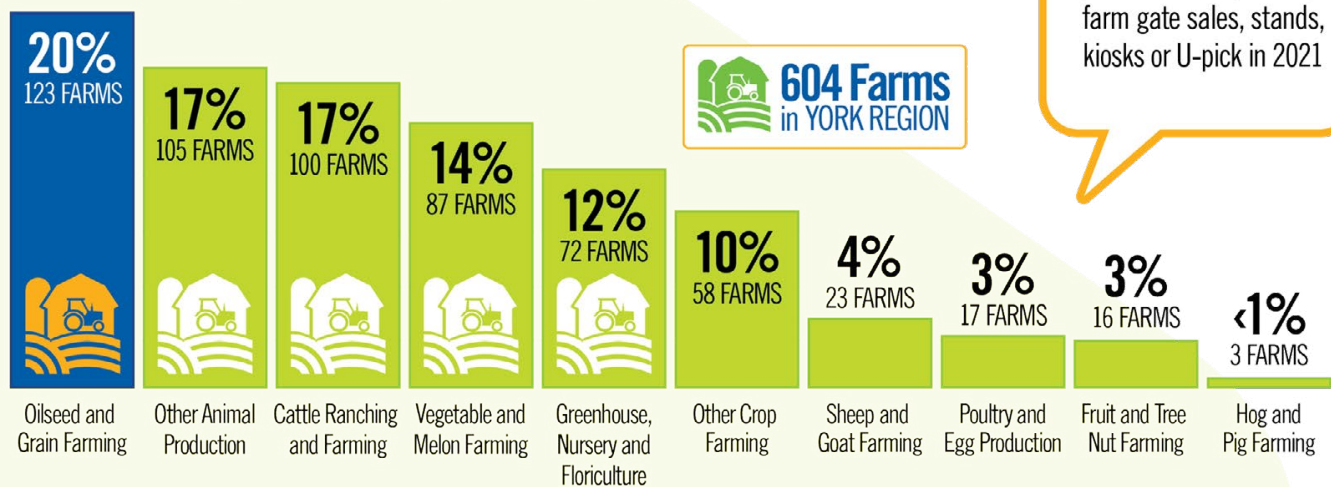
2021 York Region Farmland Tenure



DID YOU KNOW?

132 farms in York Region (22%) reported **selling directly to consumers**, most of them selling unprocessed agricultural produces, mainly through farm gate sales, stands, kiosks or U-pick in 2021

2021 York Region Farms by Industry



2021 York Region Major Fruit, Vegetable and Field Crops

Major Fruit Crops

 Strawberries **89 ACRES**

Note: several data points on Fruits, Agriculture, Census 2021, were too unreliable to be published by Statistics Canada

Major Vegetable Crops

 Carrots **2,623 ACRES**

 Cabbage **1,931 ACRES**

 Onions **1,813 ACRES**

Major Field Crops

 Soybeans **32,741 ACRES**

 Corn for Grain **24,889 ACRES**

 Alfalfa and alfalfa mixtures **11,618 ACRES**

DID YOU KNOW?

67 farms in York Region (11%) reported using solar, bioenergy/biomass combustion, or geothermal technology to **generate renewable energy** in 2021, up from **51 farms** (7%) in 2016

2021 York Region Livestock and Poultry Inventories


Livestock Inventory

 Calves **2,161**

 Steers **2,613**

 Cows **3,461**

 Sheep and Lambs **14,590**

 Horses and Ponies **1,492**

DID YOU KNOW?

70% of farm operators in York Region were over the age of **55** in 2021

Poultry Inventories

 Hens and Chickens **166,581**

Definitions

Census farm - In 2021, a farm (or census farm) was defined as a unit that produces agricultural products and reports revenues or expenses for tax purposes to the Canada Revenue Agency.

Farm headquarters rule - The Census of Agriculture “farm headquarters rule” concept refers to the assignment of all data collected for an agricultural operation to a single main farm location, as reported by

the census respondent. This methodology is applied to all agricultural operations in Canada, including those composed of numerous parcels of land located in different geographic areas (such as rural municipalities or counties). The application of the “farm headquarters rule” could result in some perceived inconsistencies related to the allocation of land and commodities to different Census Consolidated Subdivisions (CCS), from census to census.

For questions please contact York Region Long Range Planning at: futureyork@york.ca or call **1-877-464-9675** ext. 71530

For accessible formats or communication support, please contact Corporate Communications at: **1-877-464-9675** ext. 71234 or yr.corporate.communications@york.ca

Families, Households and Marital Status

Facts at a Glance

York Region 2021 Census One-Person Households

by Local Municipality

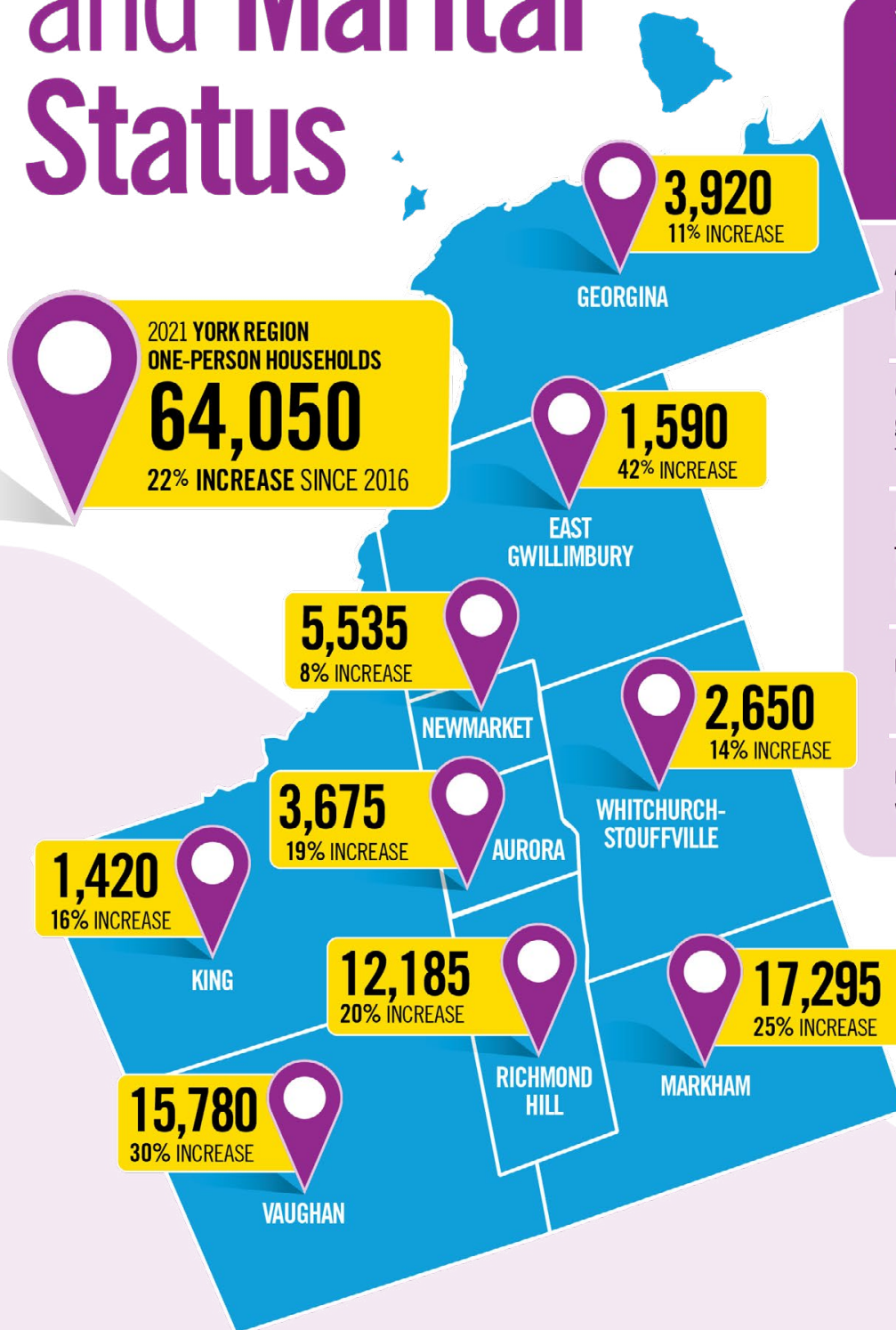
At **36%**, Markham has the **highest proportion of Multiple-Census-Family Households** in York Region.

Couples without children in York Region **grew by 12%** (or 11,495 families) from 2016 to 2021

From 2016 to 2021, the number of **one-parent families** in York Region **increased by 12%** (or 5,400 families)

61.6% of young adults aged 20 to 34 lived with at least one parent in 2021

6.6% of couple families with children were **stepfamilies**



Note: All population figures do not include the census undercoverage. Totals may not add up due to rounding.

2021 Household Composition By Local Municipality

2021 Household Composition				
Municipality	Multiple-Census-Family Households	% Share	One-Person Households	% Share
Aurora	1,270	4%	3,675	6%
East Gwillimbury	810	2%	1,590	2%
Georgina	1,060	3%	3,920	6%
King	585	2%	1,420	2%
Markham	12,320	36%	17,295	27%
Newmarket	2,035	6%	5,535	9%
Richmond Hill	5,750	17%	12,185	19%
Vaughan	9,250	27%	15,780	25%
Whitchurch-Stouffville	1,340	4%	2,650	4%
York Region	34,420	100%	64,050	100%

2021 York Region Families By Census Family Type and Local Municipality

2021 York Region Families							
Municipality	Total Census Families	Couples with Children		Couples without Children		One-Parent Families	
		Families	% Share	Families	% Share	Families	% Share
Aurora	18,090	9,850	5%	5,620	5%	2,625	5%
East Gwillimbury	10,090	5,400	3%	3,375	3%	1,315	3%
Georgina	14,015	6,135	3%	5,320	5%	2,560	5%
King	7,760	4,405	2%	2,570	2%	780	2%
Markham	98,420	52,995	29%	30,840	29%	14,580	30%
Newmarket	25,155	13,030	7%	7,790	7%	4,330	9%
Richmond Hill	59,055	32,255	17%	18,005	17%	8,795	18%
Vaughan	91,865	52,425	28%	26,790	25%	12,650	26%
Whitchurch-Stouffville	14,590	7,895	4%	5,010	5%	1,680	3%
York Region	339,040	184,390	100.00%	105,320	100.00%	49,315	100.00%

For the 2021 Census, Statistics Canada has revised their methodology used to define Multiple-Census-Family Households. The variable no longer includes Multigenerational Households and may appear as a lower count than previous census years. In addition, from 2016 to 2021, the definition of Multigenerational Households was expanded to include census families with a single grandparent. For more information, please visit the Statistics Canada website.

Census Family- A Census Family is defined as a married or common law couple and the children (if any) or a one-parent family with at least one child living in the same dwelling. All members of a particular census family must live in the same dwelling. Children may be biological or adopted children regardless of their age or marital status as long as they live in the dwelling and do not have their own married spouse, common-law partner or child living in the dwelling. A census family also includes grandchildren living with their grandparent(s) but with no parents present.

Multiple-family household -Refers to a household in which two or more census families (with or without additional persons) occupy the same private dwelling

For questions please contact York Region Long Range Planning at: **877-464-9675** ext. 71530

For accessible formats or communication support, please contact Corporate Communications at:

1-877-464-9675 ext. 71234 or yr.corporate.communications@york.ca

York Region | 2021 Census Release Report

Income

Facts at a Glance

York Region 2021 Census Median Household Income by Cities and Towns

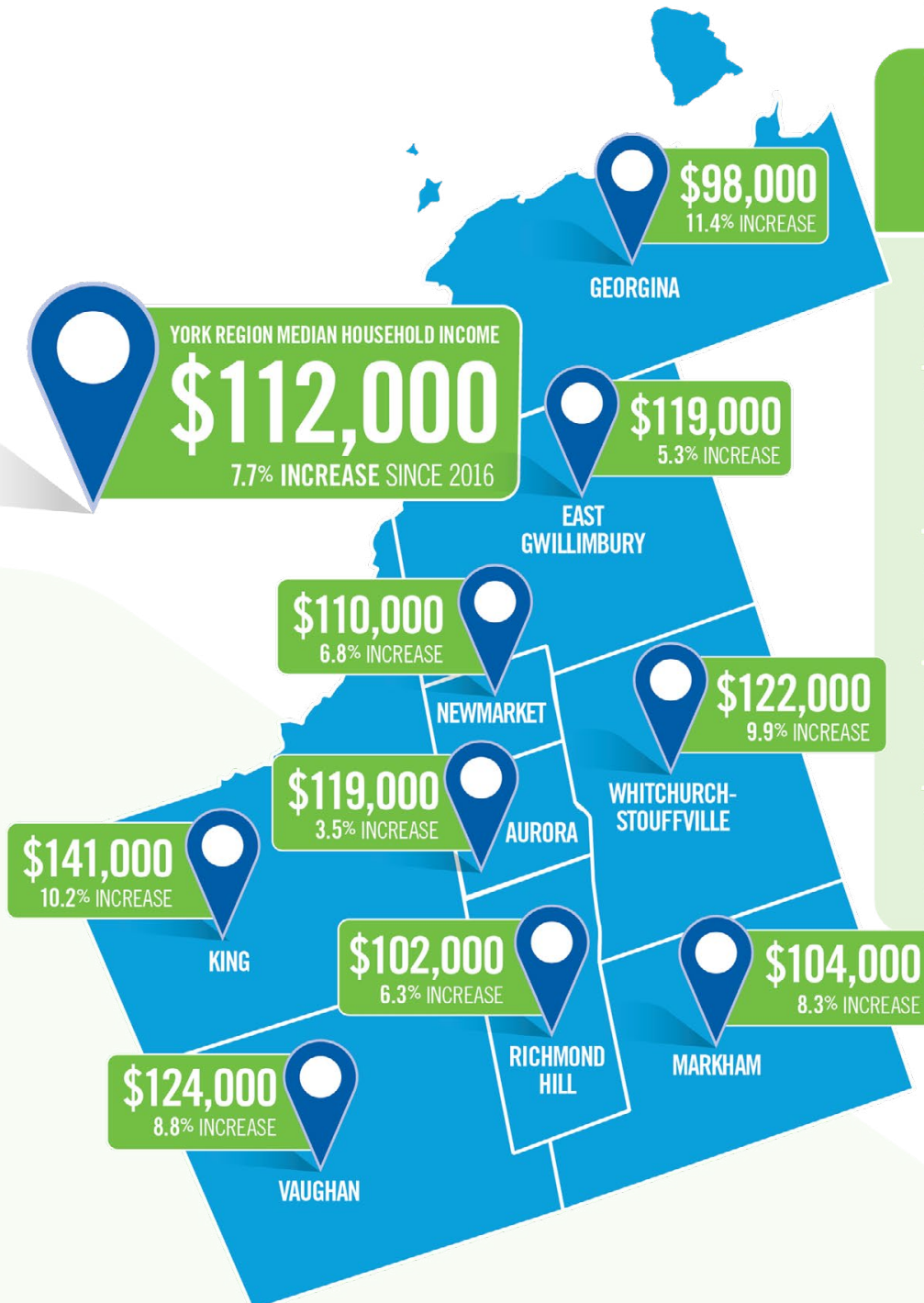
34% of private households in York Region **have an income of over \$150,000**

Three York Region municipalities rank within the **top 20** Ontario municipalities by highest median household income (King, Vaughan, Whitchurch-Stouffville)

At \$141,000, **King has the highest** median household income of **all municipalities in Ontario**

York Region has the **second highest median household income** in the Greater Toronto and Hamilton Area (GTHA)

York Region median household income is **\$112,000**, an increase of 7.7% since 2016



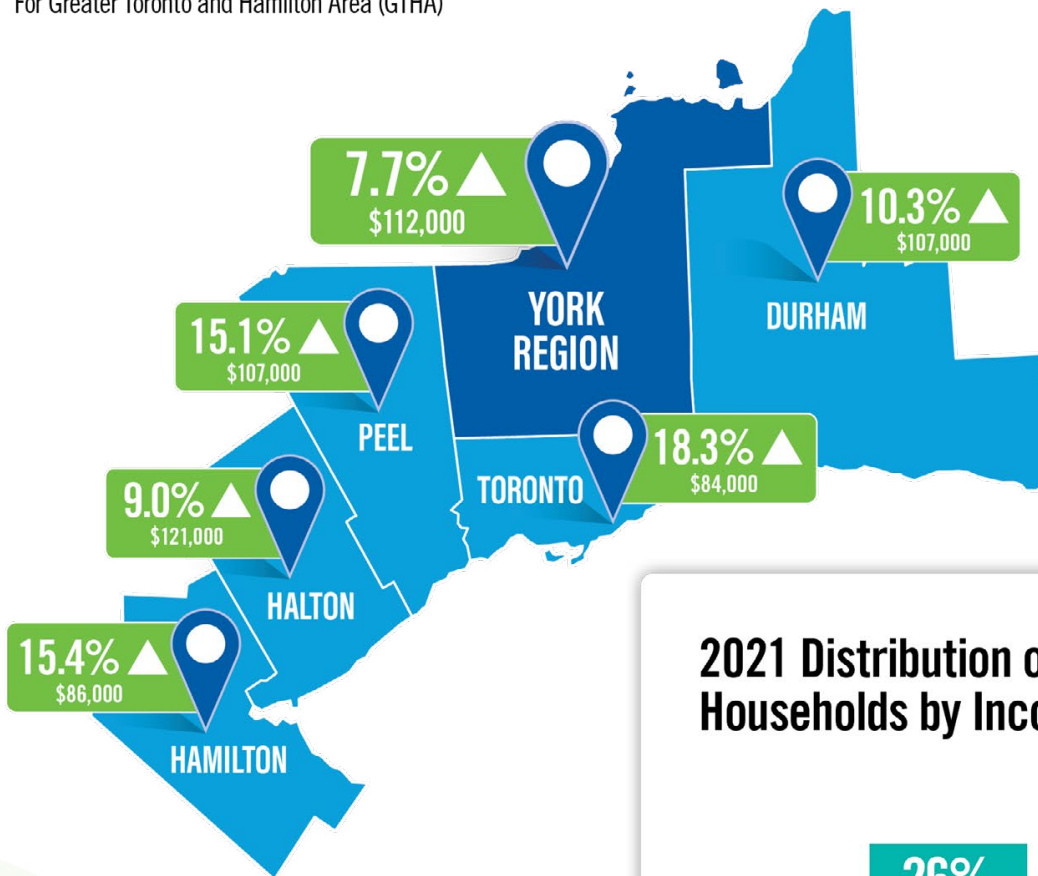
Note: All population figures do not include the census undercoverage. Totals may not add up due to rounding. The income data used for the 2021 Census is based on income information collected in 2020. The income data reported represents people 15 years of age and older.

2021 Median Household Income¹ Growth

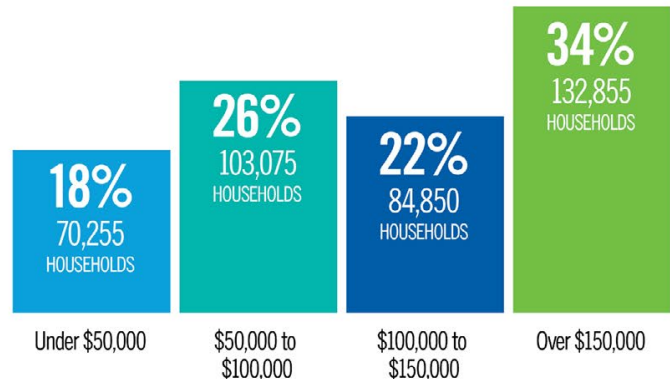
For Greater Toronto and Hamilton Area (GTHA)



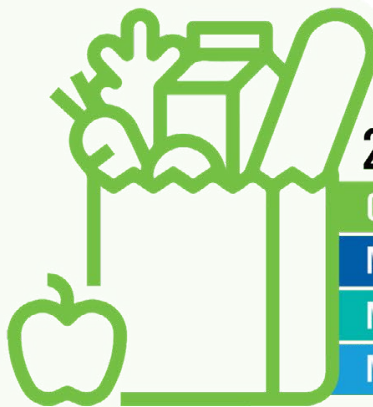
More than **32%** or **315,000** of York Region residents (15 years of age and older) received payments from federal emergency and recovery benefits, most often through the Canada Emergency Response Benefit (CERB) program in 2020



2021 Distribution of York Region Households by Income Group



2021 Income and Cost of Living Increase in York Region



2016 to 2021

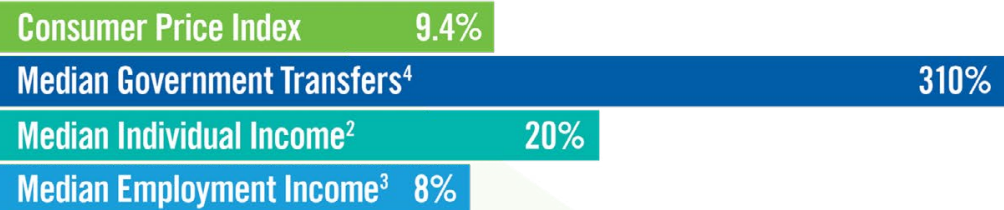


Chart not to scale

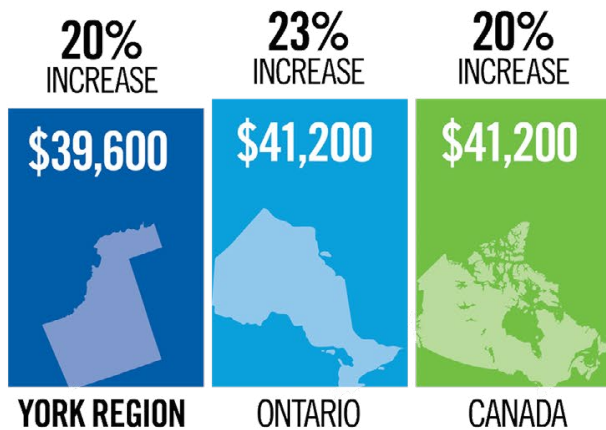
The Toronto CMA inflation rates for 2015 and 2020 were used in the Consumer Price Index (CPI) calculation. Median Individual Income, Median Employment Income and Median Amount of Government Transfers not adjusted for inflation.

⁴ **Government transfers** are all cash benefits received from federal, provincial, territorial or municipal governments.

For the 2021 Census, this includes various benefits from federal and provincial government income programs intended to provide financial support to individuals affected by the COVID-19 pandemic.

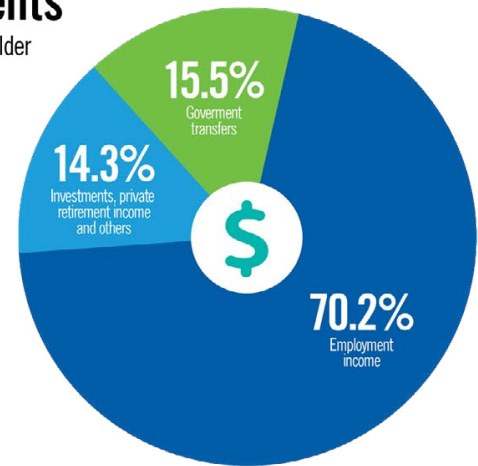
2021 York Region Median Individual Income²

Compared to Ontario and Canada



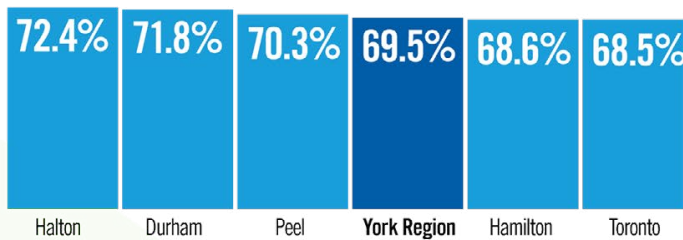
Income Composition of York Region Residents

Age 15 and Older



Residents Reporting Income from Employment

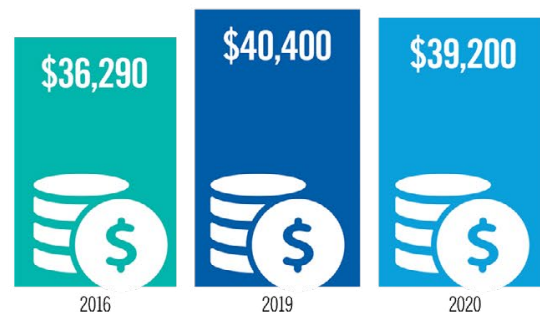
For Greater Toronto and Hamilton Area (GTHA)



69.5% of York Region residents reported income from employment

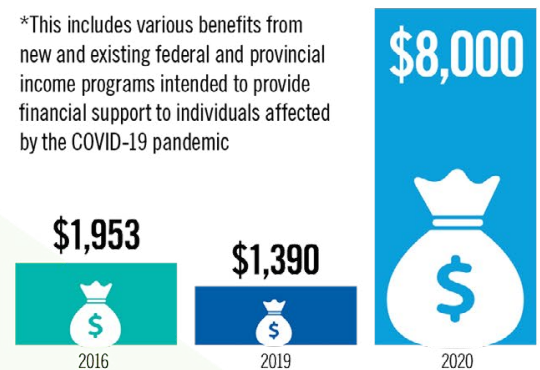
86% of York Region residents reported income from government transfers

Median Employment Income in York Region

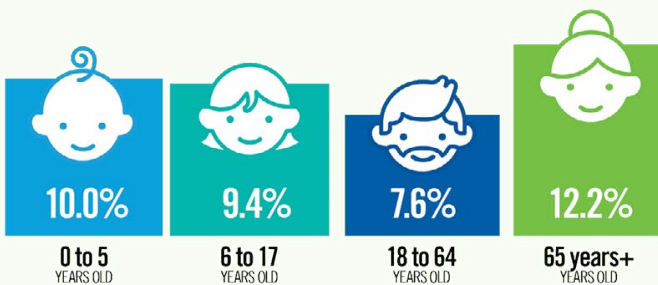


Income from Government Transfers* in York Region

*This includes various benefits from new and existing federal and provincial income programs intended to provide financial support to individuals affected by the COVID-19 pandemic



Proportion of Population in Low-Income Households by Age Group



Low Income Measure After-Tax (LIM-AT) is used to identify people who are living with low income. Like the 2016 Census, the 2021 Census uses a different methodology to calculate LIM-AT than the Taxfilers Database. Data users should be aware of these differences when comparing information from different datasets.

310% increase in income from government transfers was reported by York Region residents since 2016, the largest increase in the GTHA.

2021 York Region Households by Income Group

Income (\$)	York Region		Aurora		East Gwillimbury		Georgina		King	
	Household	Share	Household	Share	Household	Share	Household	Share	Household	Share
Under \$10,000	6,370	2%	250	1%	115	1%	165	1%	120	1%
\$10,000 to \$19,999	7,470	2%	335	2%	155	1%	395	2%	115	1%
\$20,000 to \$29,999	17,835	5%	820	4%	380	4%	1,060	6%	320	3%
\$30,000 to \$39,999	18,955	5%	820	4%	415	4%	990	6%	300	3%
\$40,000 to \$49,999	19,625	5%	1,025	5%	465	4%	1,115	6%	325	4%
\$50,000 to \$59,999	20,655	5%	1,095	5%	525	5%	1,110	6%	340	4%
\$60,000 to \$69,999	21,000	5%	1,120	5%	570	5%	1,120	6%	425	5%
\$70,000 to \$79,999	21,145	5%	1,160	5%	660	6%	1,120	6%	380	4%
\$80,000 to \$89,999	20,570	5%	1,085	5%	625	5%	1,055	6%	375	4%
\$90,000 to \$99,999	19,705	5%	1,075	5%	640	6%	1,045	6%	355	4%
\$100,000 to \$124,999	45,680	12%	2,535	12%	1,535	13%	2,480	14%	910	10%
\$125,000 to \$149,999	39,170	10%	2,240	10%	1,360	12%	2,010	11%	800	9%
\$150,000 to \$199,999	57,135	15%	3,200	15%	1,940	17%	2,435	14%	1,420	16%
\$200,000 and over	75,720	19%	4,745	22%	2,065	18%	1,780	10%	2,775	31%
Total	391,035	100%	21,505	100%	11,450	100%	17,880	100%	8,960	100%

Income (\$)	Markham		Newmarket		Richmond Hill		Vaughan		Whitchurch-Stouffville	
	Household	Share	Household	Share	Household	Share	Household	Share	Household	Share
Under \$10,000	2,525	2%	320	1%	1,545	2%	1,145	1%	175	1%
\$10,000 to \$19,999	2,290	2%	610	2%	1,785	3%	1,550	1%	200	1%
\$20,000 to \$29,999	5,200	5%	1,475	5%	3,845	6%	4,170	4%	555	4%
\$30,000 to \$39,999	6,155	6%	1,325	4%	4,045	6%	4,270	4%	620	4%
\$40,000 to \$49,999	5,815	5%	1,520	5%	3,905	6%	4,715	5%	740	4%
\$50,000 to \$59,999	6,285	6%	1,625	5%	3,985	6%	4,920	5%	750	4%
\$60,000 to \$69,999	6,405	6%	1,735	6%	3,920	6%	4,905	5%	790	5%
\$70,000 to \$79,999	6,295	6%	1,740	6%	3,920	6%	5,015	5%	850	5%
\$80,000 to \$89,999	6,220	6%	1,670	6%	3,625	5%	5,035	5%	875	5%
\$90,000 to \$99,999	5,885	5%	1,585	5%	3,295	5%	4,965	5%	860	5%
\$100,000 to \$124,999	12,925	12%	3,835	13%	7,575	11%	11,680	11%	2,200	13%
\$125,000 to \$149,999	10,800	10%	3,225	11%	6,145	9%	10,685	10%	1,900	11%
\$150,000 to \$199,999	15,075	14%	4,535	15%	8,965	13%	16,785	16%	2,780	17%
\$200,000 and over	18,975	17%	5,095	17%	12,765	18%	24,080	23%	3,420	20%
Total	110,850	100%	30,295	100%	69,320	100%	103,920	100%	16,715	100%

¹ **Median household income** is the amount that divides the income of all households, sorted from lowest to highest, into two halves.

² **Median individual income** is the amount that divides the income of all people 15 years and over, sorted from lowest to highest, into two halves. Individual Income refers to the sum of incomes received from employment income, income from investments, income from government transfers and other sources of income.

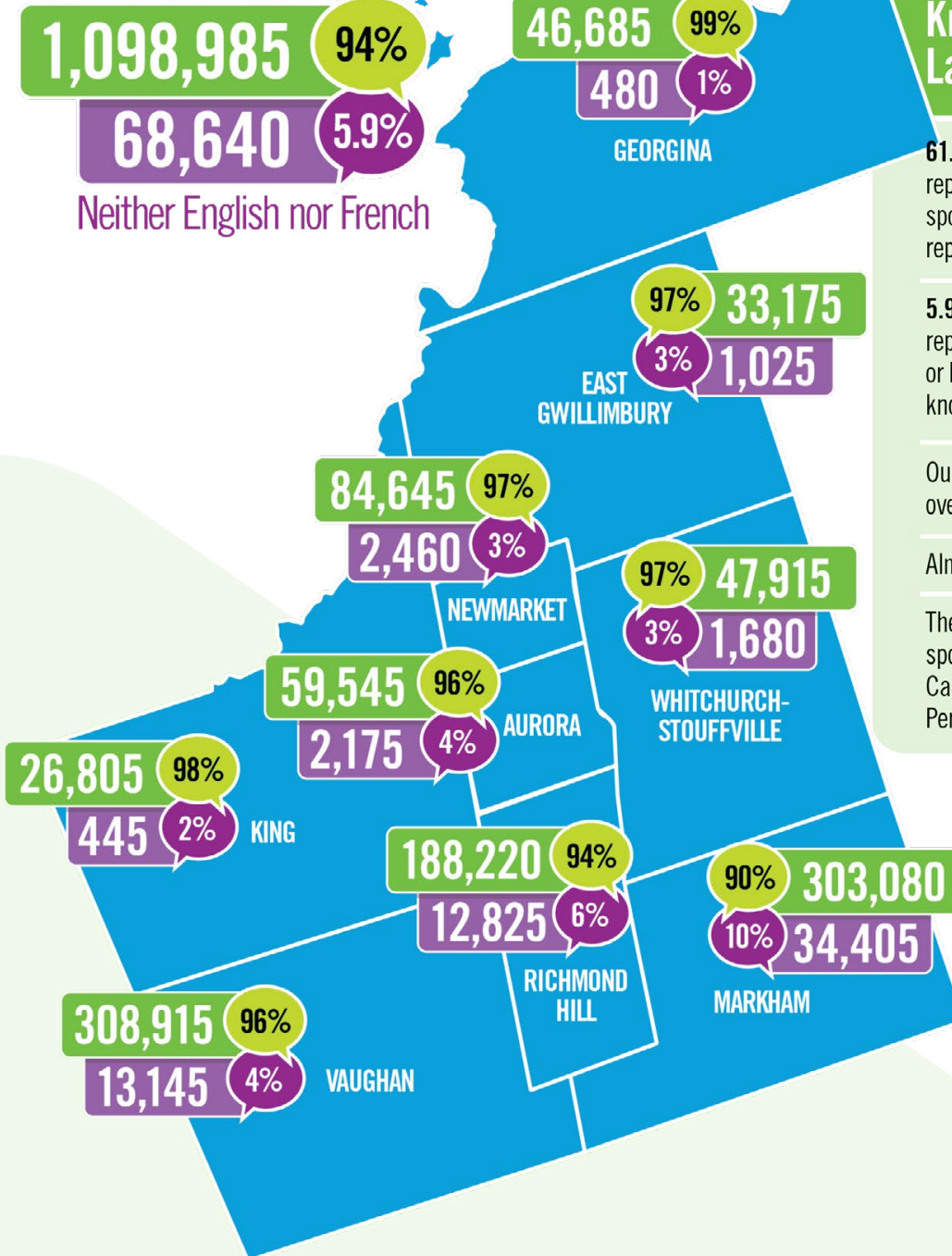
³ **Median employment income** is the amount that divides the employment or self-employment income of people 15 years and over, sorted from lowest to highest, into two halves.

For questions please contact York Region Long Range Planning at:
futureyork@york.ca or call 1-877-464-9675 ext. 71530

For accessible formats or communication support, please contact Corporate Communications at:
 1-877-464-9675 ext. 71234 or yr.corporate.communications@york.ca

Language

York Region residents that speak:
English and/or French



Facts at a Glance

York Region 2021 Census Knowledge of Official Languages by Local Municipality

61.8% of York Region residents reported English as the language spoken most often at home and 0.2% reported speaking French at home

5.9% of York Region residents reported they could not speak English or French, with 18% of seniors not knowing French or English

Our diverse communities speak over 120 languages

Almost 60% of people are multilingual

The top three non-official languages spoken at home in York Region are Cantonese, Mandarin and Iranian Persian

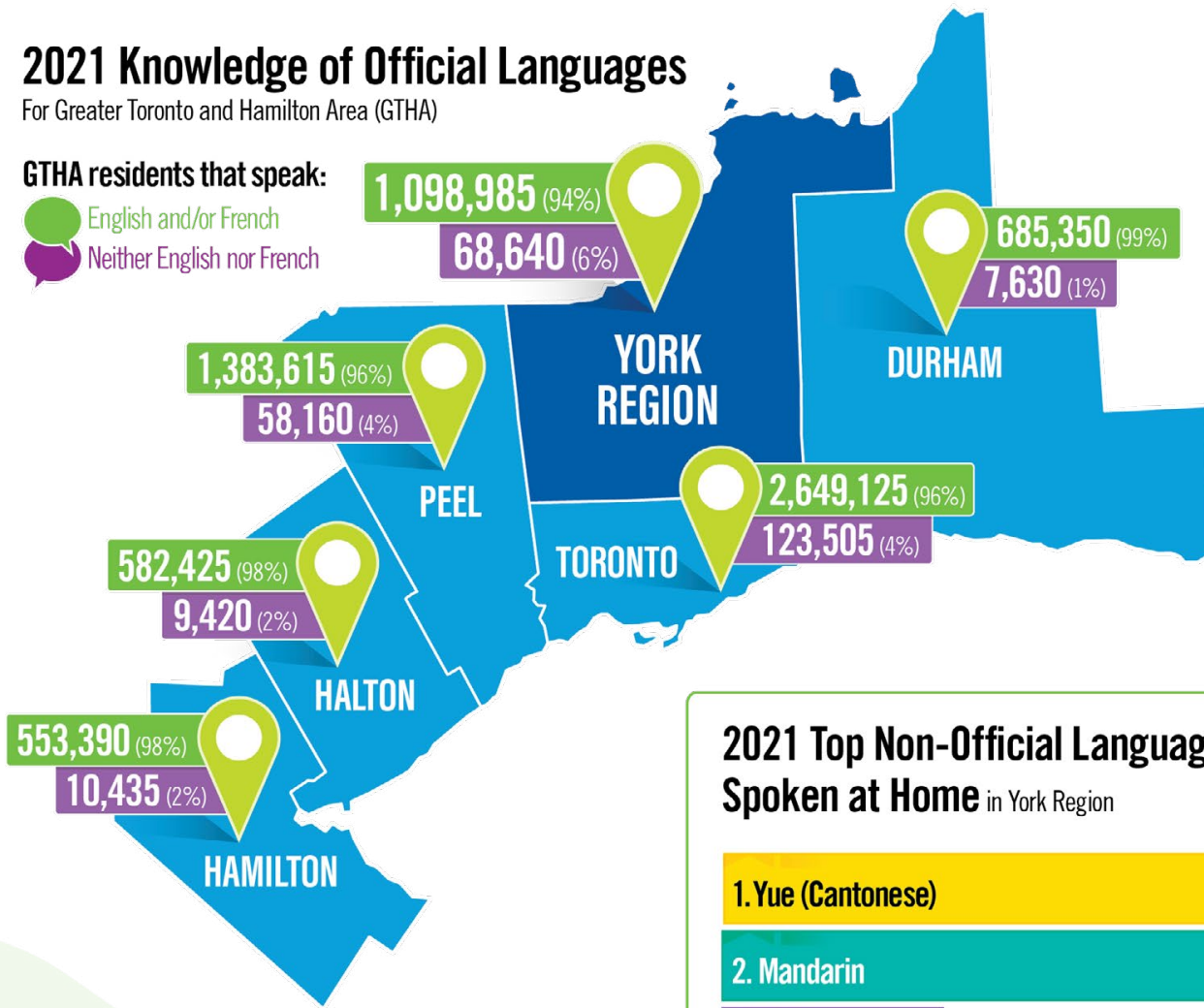
Note: All population figures do not include the census undercoverage. Totals may not add up due to rounding.

2021 Knowledge of Official Languages

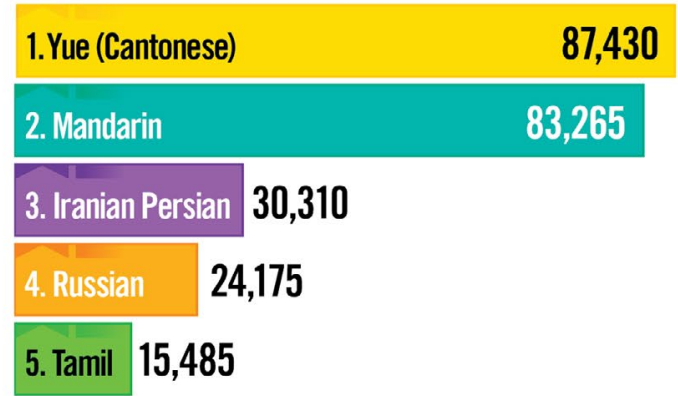
For Greater Toronto and Hamilton Area (GTHA)

GTHA residents that speak:

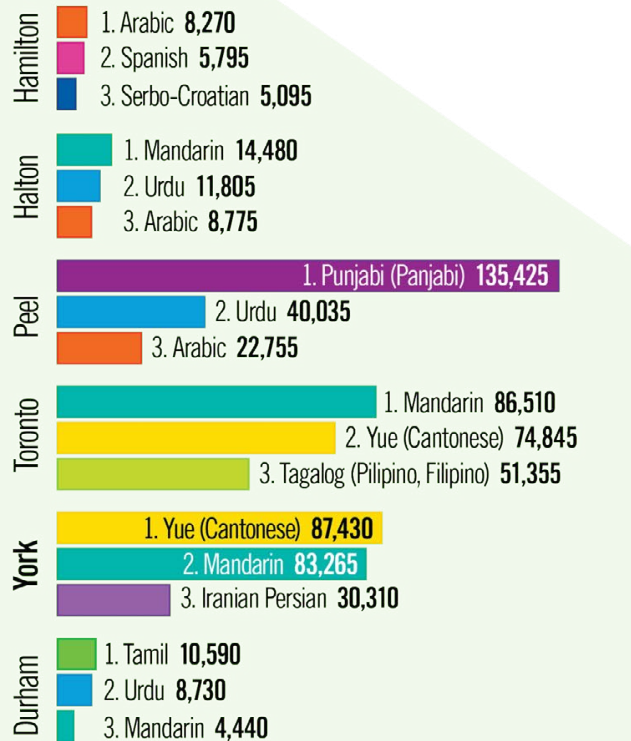
- English and/or French
- Neither English nor French



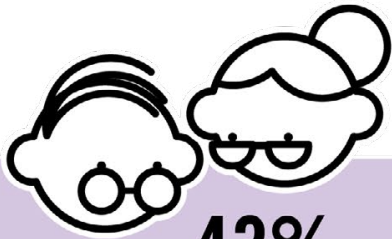
2021 Top Non-Official Languages Spoken at Home in York Region



2021 Top Non-Official Languages Spoken at Home in Greater Toronto and Hamilton Area

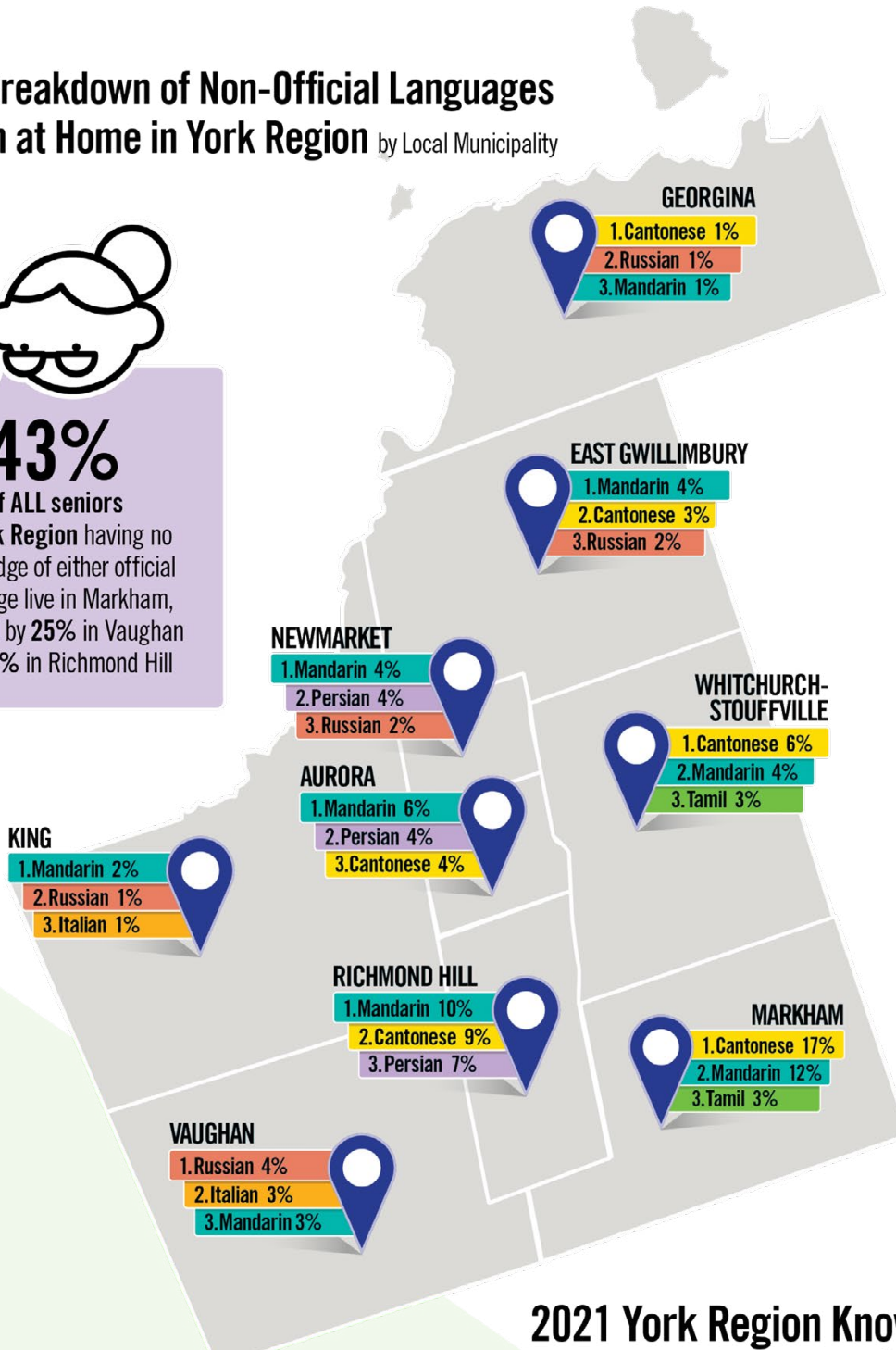


2021 Breakdown of Non-Official Languages Spoken at Home in York Region by Local Municipality



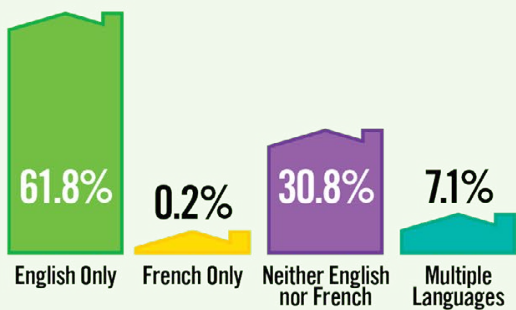
43%

of ALL seniors in York Region having no knowledge of either official language live in Markham, followed by 25% in Vaughan and 21% in Richmond Hill



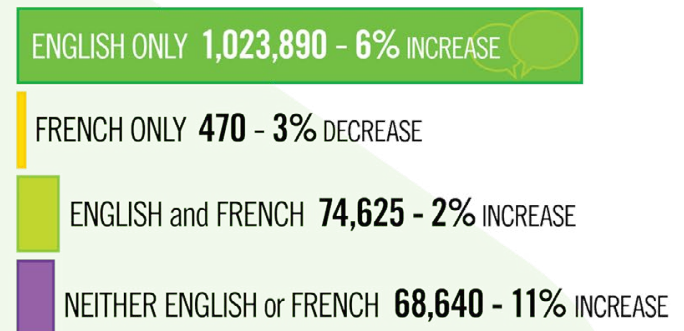
2021 Languages at Home

61.8% of York Region residents speak English most often at home



2021 York Region Knowledge of Official Languages*

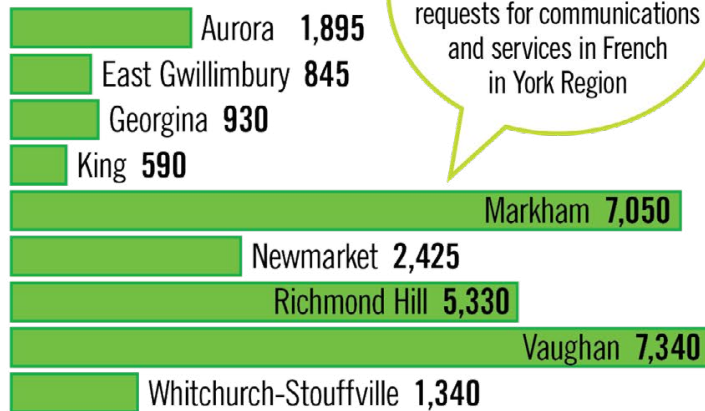
and percent change since 2016



* Official Languages: Refers to the first official language (i.e., English or French) spoken by a person.

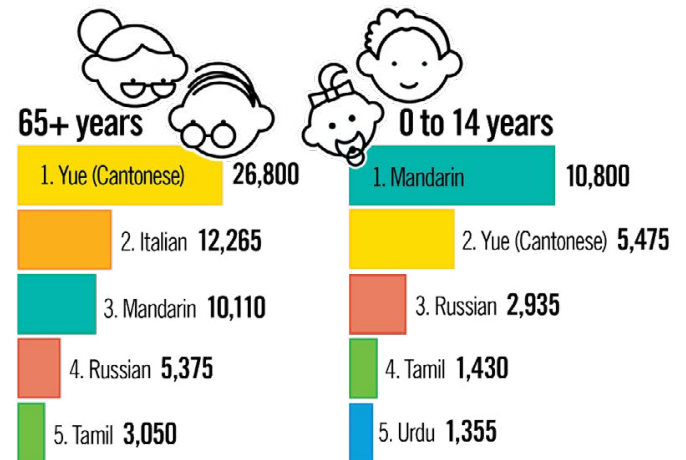
2021 Estimated Demand for Communications and Services in French*

By Local Municipality



In 2021, there was an estimated demand for **over 27,000** requests for communications and services in French in York Region

2021 Top Non-Official Languages for Seniors (65 years+) and Children (0 to 14 years) in York Region



*As part of its commitment to the Official Languages Act Statistics Canada has extrapolated from existing data on French language proficiency in York Region to estimate the potential demand for service in French.

2021 York Region Knowledge of Official Languages

By Local Municipality

Municipality	English and French		English Only		French Only		Neither English nor French	
	Number of Residents	% Share	Number of Residents	% Share	Number of Residents	% Share	Number of Residents	% Share
Aurora	5,415	8.8%	54,105	87.7%	25	0.0%	2,175	3.5%
East Gwillimbury	2,180	6.4%	30,980	90.6%	15	0.0%	1,025	3.0%
Georgina	2,430	5.2%	44,240	93.8%	15	0.0%	480	1.0%
King	1,820	6.7%	24,975	91.7%	10	0.0%	445	1.6%
Markham	18,325	5.4%	284,630	84.3%	125	0.0%	34,405	10.2%
Newmarket	6,465	7.4%	78,145	89.7%	35	0.0%	2,460	2.8%
Richmond Hill	14,745	7.3%	173,385	86.2%	90	0.0%	12,825	6.4%
Vaughan	19,760	6.1%	289,015	89.7%	140	0.0%	13,145	4.1%
Whitchurch-Stouffville	3,485	7.0%	44,415	89.6%	15	0.0%	1,680	3.4%
York Region	74,625	6.4%	1,023,890	87.7%	470	0.0%	68,640	5.9%

For questions please contact York Region Long Range Planning at: futureyork@york.ca or call 1-877-464-9675 ext. 71530

For accessible formats or communication support, please contact Corporate Communications at: 1-877-464-9675 ext. 71234 or yr.corporate.communications@york.ca

Housing

Facts at a Glance

York Region 2021 Census Housing

by Local Municipality

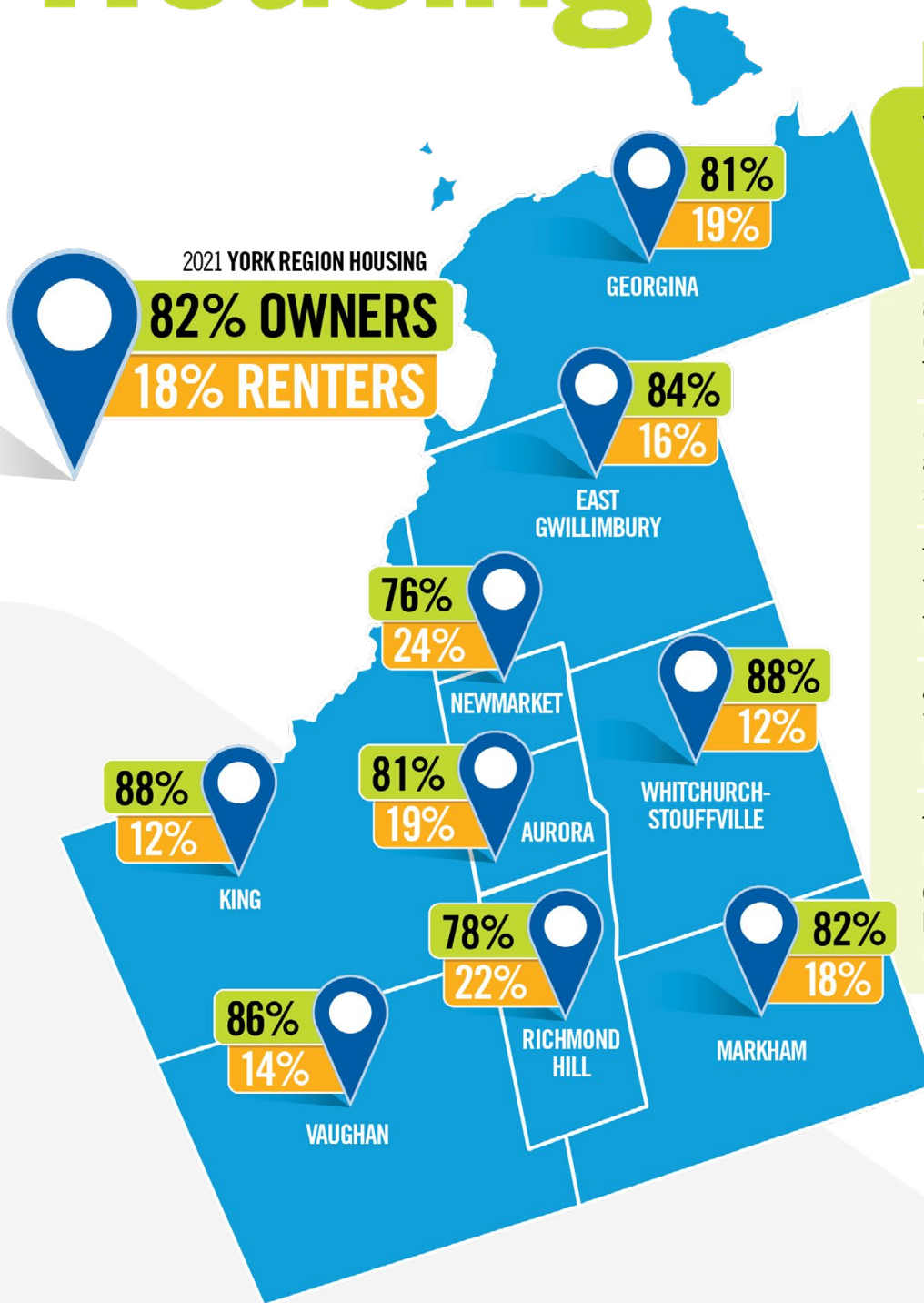
82% of York Region households are owners - the highest in the Greater Toronto and Hamilton Area (GTHA)

39% of York Region owner-occupiers are mortgage free, 51% of whom are seniors aged 65+

The number of **renter households in York Region grew by 38%** since 2016 - the largest increase in Ontario

47% of renter households in York Region spend 30% or more on housing - the highest in the GTHA

The median monthly housing cost for rented dwellings **increased by 34%** compared to a **17% growth in household income** since 2016 (figures not adjusted for inflation)

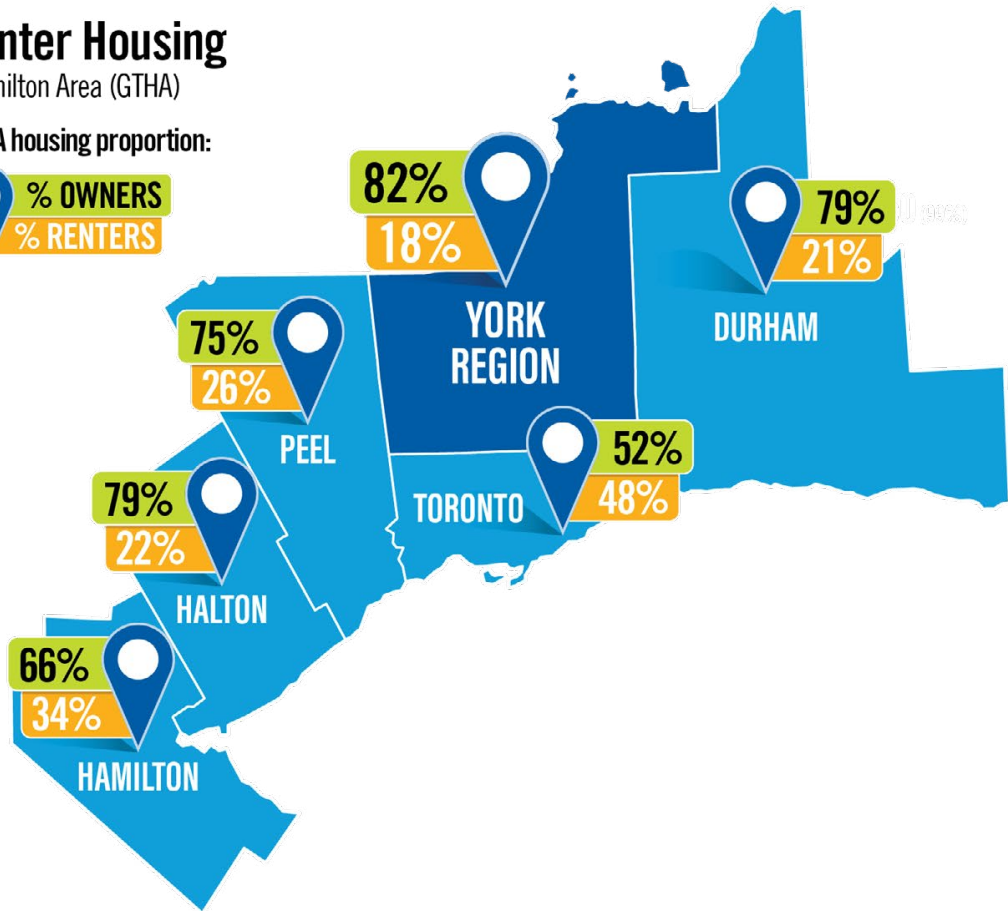


Note: All population figures do not include the census undercoverage. Totals may not add up due to rounding. Chippewas of Georgina Island First Nation is independent of The Regional Municipality of York. The Chippewas of Georgina Island are important neighbours and we have included their data in this Census bulletin where available.

2021 Owner/Renter Housing

For Greater Toronto and Hamilton Area (GTHA)

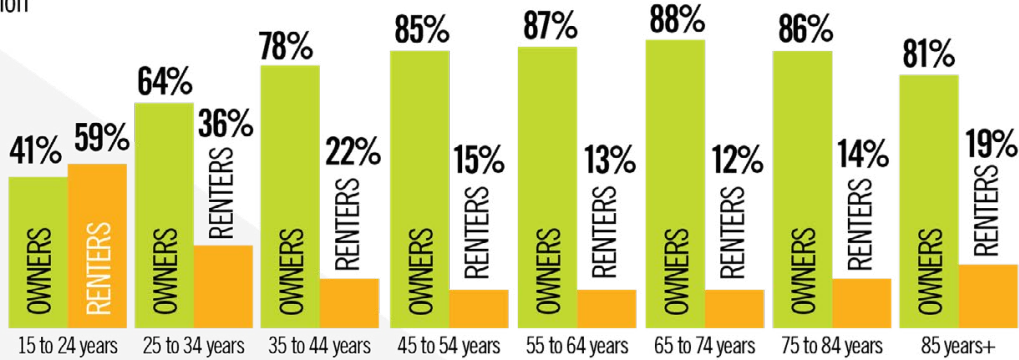
GTHA housing proportion:



Dwellings built since 2016 are more likely to be occupied by renters (31%)

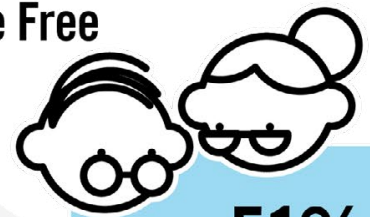
2021 Housing by Tenure and Age of Primary Household Maintainer

for York Region



2021 Owner Households with a Mortgage or Mortgage Free

For Greater Toronto and Hamilton Area



51%

More than half of mortgage free owner-occupiers are seniors (65+ years)

2021 Housing Costs in York Region

Since 2016 (figures not adjusted for inflation)



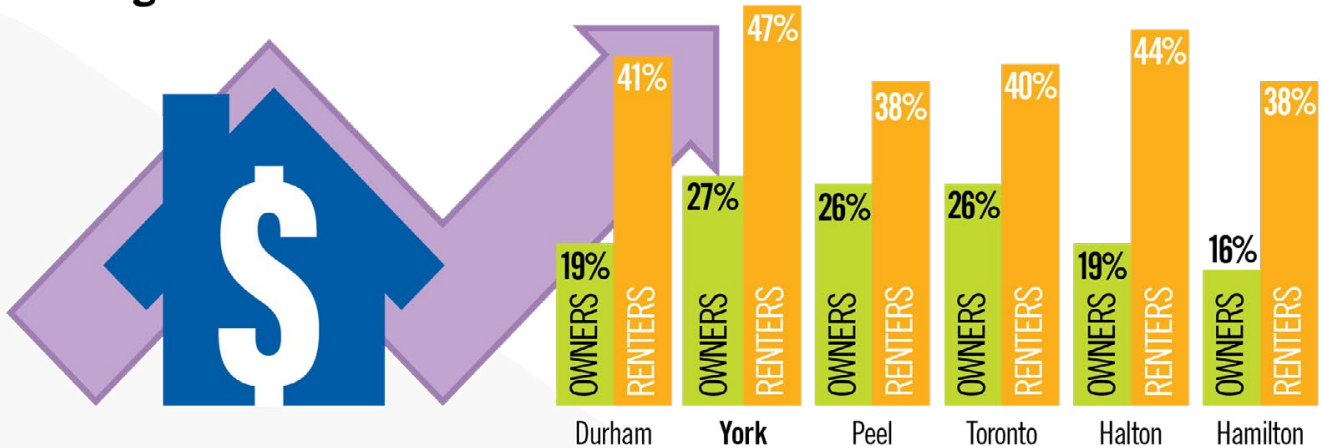
2021 Median Monthly Housing Cost

For York Region



2021 Proportion of Households Spending 30% or More of Income on Housing Costs

For Greater Toronto and Hamilton Area



The Canada Mortgage and Housing Corporation considers housing affordable when a household spends **less than 30%** of its pre-tax income on adequate shelter.

10%

of renter households are subsidized in York Region



3%

of occupied dwellings in York Region are in need of major repairs



94%

of York Region dwellings are suitable for the composition of the household



2021 Owners/Renters Spending More than 30% of Household Income on Housing

For York Region by Local Municipality



Municipality	Total Owner Households	Owner Households Spending more than 30% on Housing		Total Renter Households	Renter Households Spending more than 30% on Housing	
		Households	% Share		Households	% Share
Aurora	17,475	4,520	25.9%	4,030	1,770	43.9%
East Gwillimbury	9,600	2,265	23.6%	1,805	790	43.8%
Georgina	14,485	2,840	19.6%	3,335	1,345	40.3%
King	7,780	1,950	25.1%	1,045	390	37.3%
Markham	90,540	26,580	29.4%	20,310	9,540	47.0%
Newmarket	22,955	5,125	22.3%	7,350	2,880	39.2%
Richmond Hill	54,210	17,935	33.1%	15,105	7,635	50.5%
Vaughan	89,275	21,605	24.2%	14,615	7,280	49.8%
Whitchurch-Stouffville	14,665	3,420	23.3%	2,005	860	42.9%
York Region	320,985	86,240	26.9%	69,600	32,490	46.7%

Definitions

Dwellings in need of major repairs - Refers to homes that need major repairs for such things as defective plumbing, or electrical wiring and/or structural repairs. This does not include renovations or additions for aesthetic purposes.

Housing cost - Housing expenses paid by families that own or rent their dwelling which could include mortgage payments, property taxes, condominium fees, utilities and municipal services.

Suitable Housing - Defined by the National Occupancy Standard as a measure of whether a dwelling has enough bedrooms for the size and composition of the household.

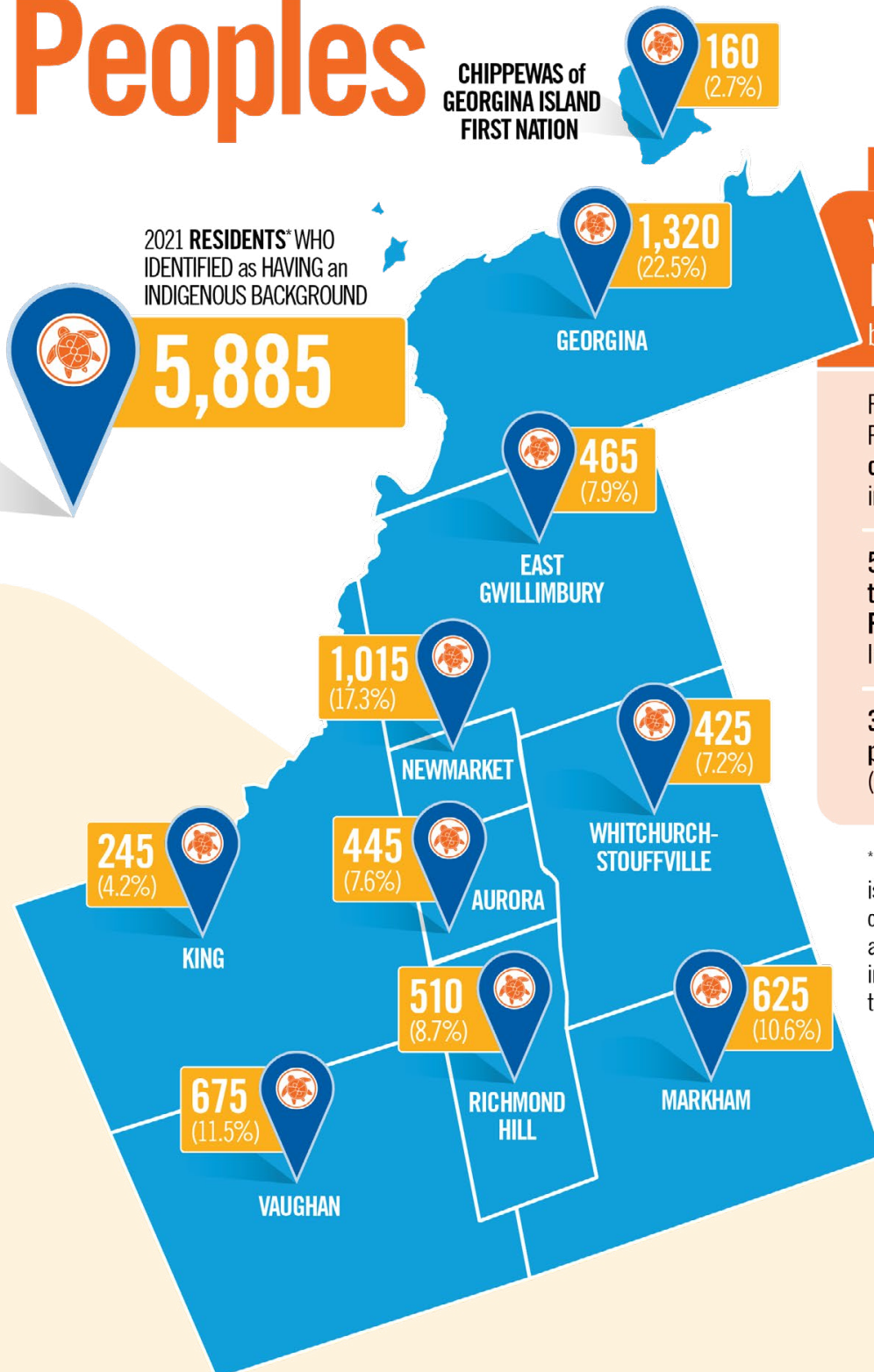
Subsidized housing - Subsidized housing includes rent geared to income, social housing, public housing, government-assisted housing, non-profit housing, rent supplements and housing allowances.

Primary household maintainer - The first person in the household identified as someone who pays the rent, or the mortgage, or the taxes, or the electricity or other services or utilities for the dwelling. When more than one member of the household contributes to the payments, the first person listed is chosen as the primary household maintainer. If no person in the household is identified as making any such payments, the first person listed is selected by default.

For questions please contact York Region Long Range Planning at: futureyork@york.ca or call 1-877-464-9675 ext. 71530

For accessible formats or communication support, please contact Corporate Communications at: 1-877-464-9675 ext. 71234 or yr.corporate.communications@york.ca

Indigenous Peoples



2021 RESIDENTS* WHO IDENTIFIED as HAVING an INDIGENOUS BACKGROUND

5,885

Facts at a Glance

York Region 2021 Census Indigenous Peoples

by Local Municipality

For the first time, the Census of Population enumerated more than one million First Nations people living in Canada (1,048,405).

5,885 residents of York Region and the Chippewas of Georgina Island First Nation identify as having an Indigenous background

3,230 of York Region Indigenous people identify as First Nations (North American Indian)

*Chippewas of Georgina Island First Nation is independent of The Regional Municipality of York. The Chippewas of Georgina Island are important neighbours and we have included their Indigenous Peoples data in this 2021 Census Release report.

Note: All population figures do not include the census undercoverage. Totals may not add up due to rounding.

2021 Indigenous People by Indigenous Identity

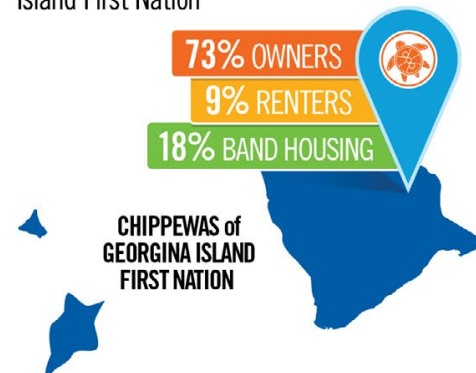
For York Region



*This category includes persons who do not identify as First Nations (North American Indian), Métis or Inuk (Inuit) but who report having Treaty or Registered Indian status and/or Membership in a First Nation or Indian band.

2021 Owners, Renters and Band Housing

for Chippewas of Georgina Island First Nation



2021 Residents Who Identified as Having an Indigenous Background

For York Region and by Local Municipality

Aurora	445	7.6%
Chippewas of Georgina Island First Nation	160	2.7%
East Gwillimbury	465	7.9%
Georgina	1,320	22.5%
King	245	4.2%
Markham	625	10.6%
Newmarket	1,015	17.3%
Richmond Hill	510	8.7%
Vaughan	675	11.5%
Whitchurch-Stouffville	425	7.2%
York Region	5,885	100%

1,320
Georgina residents identify as having an Indigenous background

We acknowledge that York Region is located within the traditional territory of many First Nations, including the Chippewas of Georgina Island and the Mississaugas of the Credit. These lands are now home to many diverse Indigenous peoples. We also acknowledge that York Region falls under Treaty 13 with the Mississaugas of the Credit and the Williams Treaties with several Mississauga and Chippewas First Nations.

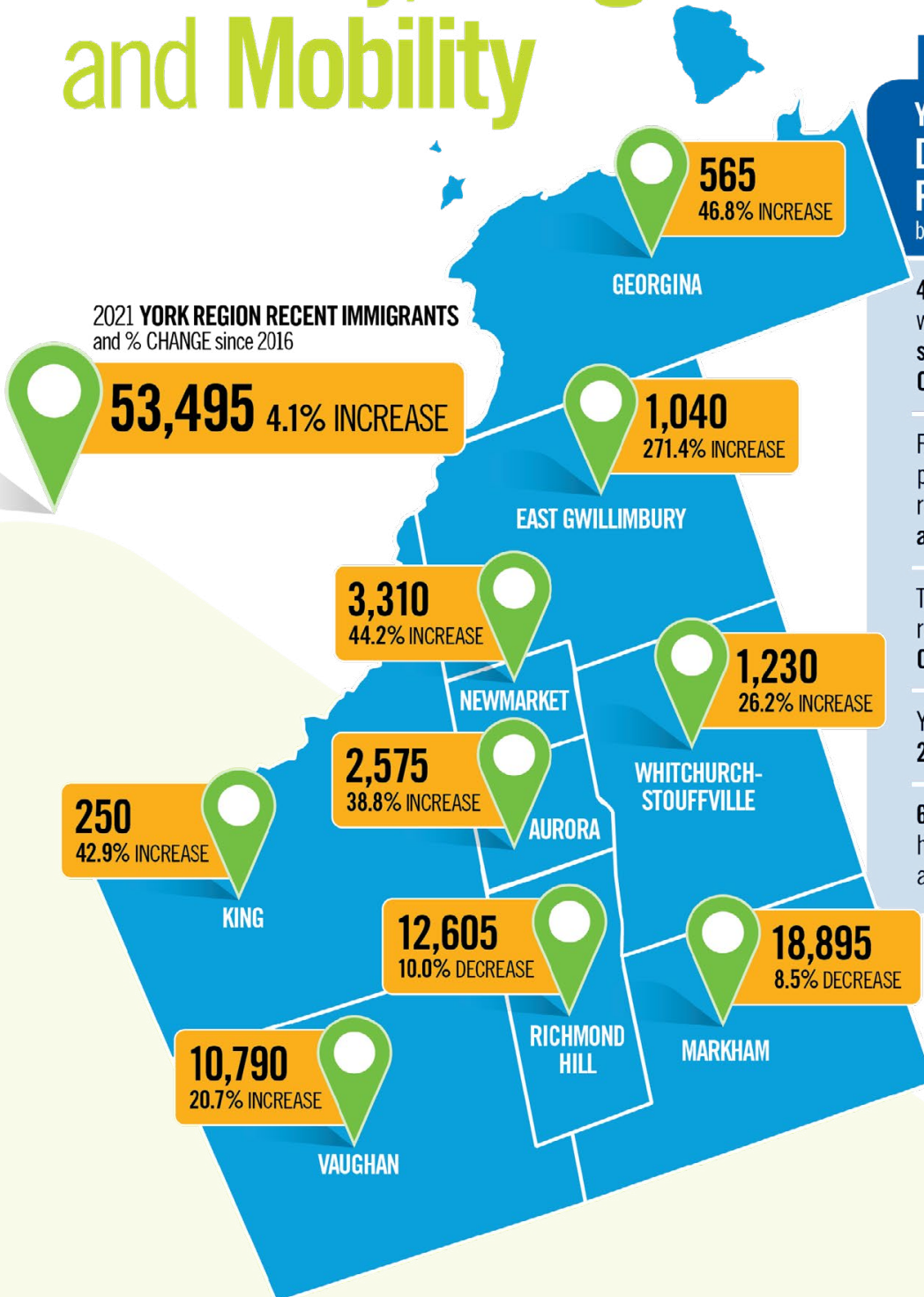
Definitions

Aboriginal household - Although not referenced in this bulletin, definition is still used by Statistics Canada. Refers to a household that is either a non-family household in which at least 50% of household members self-identified as Aboriginal people, or a family household that meets at least one of two criteria: (a) at least one married spouse, common-law partner, or lone parent self-identified as an Aboriginal person; or (b) at least 50% of household members self-identified as Aboriginal people. An Aboriginal person is anybody identifying as an Aboriginal person, a member of an Indian Band/First Nation, or a Treaty Indian or Registered Indian

For questions please contact York Region Long Range Planning at:
futureyork@york.ca or call 1-877-464-9675 ext. 71530

For accessible formats or communication support, please contact Corporate Communications at:
1-877-464-9675 ext. 71234 or yr.corporate.communications@york.ca

Immigration, Ethnocultural Diversity, Religion and Mobility



Facts at a Glance

York Region 2021 Census Distribution of Recent Immigrants by Local Municipality

47.8% (557,025) of York Region residents were born outside of Canada - the **second highest proportion in Ontario**, behind Peel Region

From 2016 to 2021, York Region's population **increased by 63,455** residents, with **recent immigrants accounting for 84.3%** of that growth

The **top three countries of origin** for recent immigrants in York Region are **China, Iran and India**

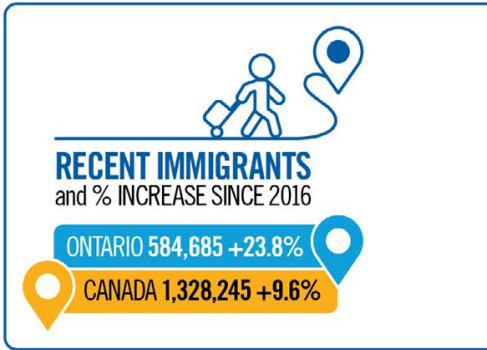
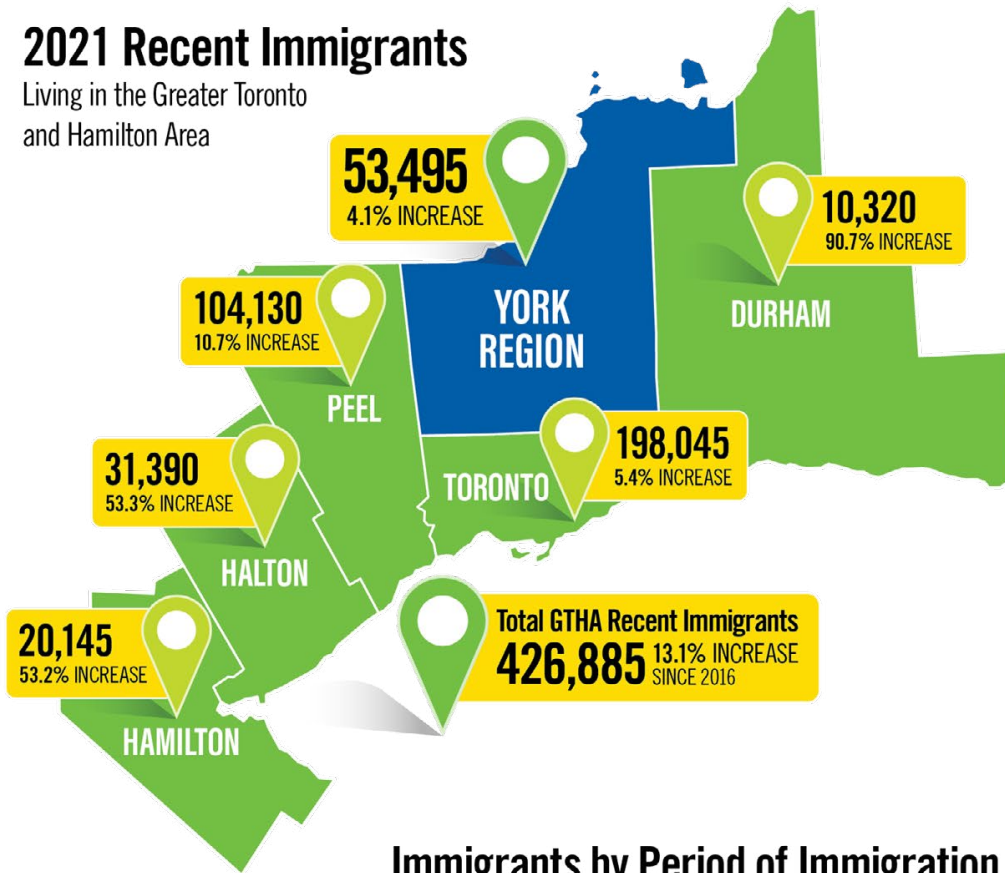
York Region residents reported having **238 distinct ethnic origins**

68% of York Region residents reported having a **religious affiliation**, a 9% decrease since 2011

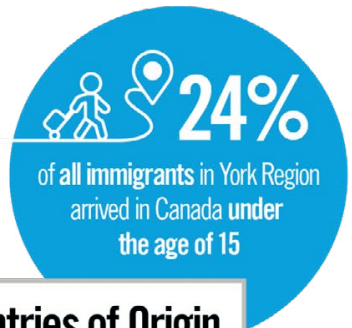
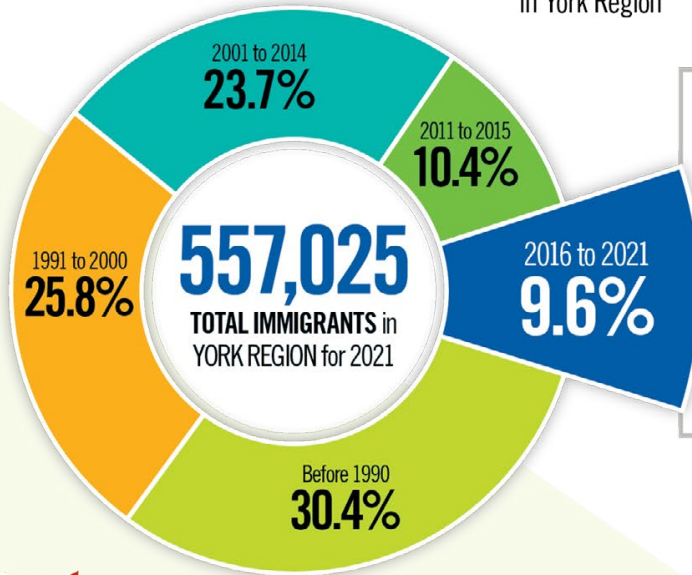
Note: Totals may not add up due to rounding.

2021 Recent Immigrants

Living in the Greater Toronto and Hamilton Area



Immigrants by Period of Immigration in York Region



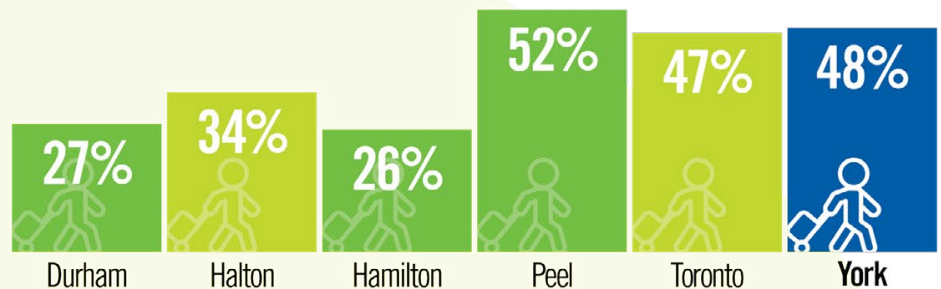
Top Five Countries of Origin



88.5%
of York Region residents are Canadian citizens

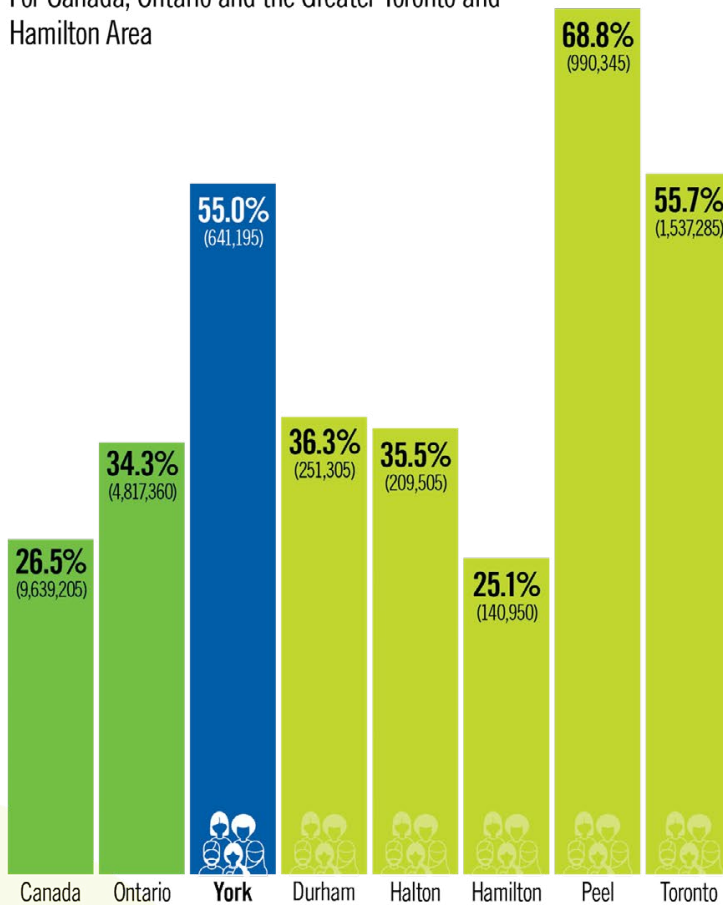
Immigrants as a Proportion of Population

Across the Greater Toronto and Hamilton Area in 2021



2021 Proportion of Population that Self-Identified as a Visible Minority

For Canada, Ontario and the Greater Toronto and Hamilton Area

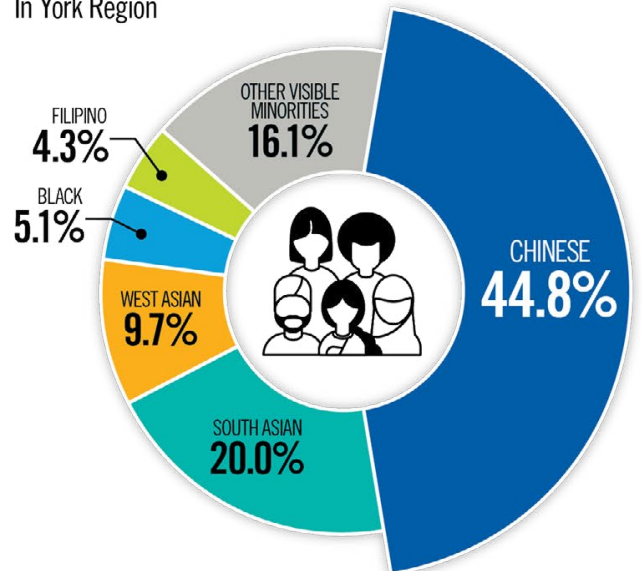


18.5%

INCREASE in visible minorities (self-identified) since 2016

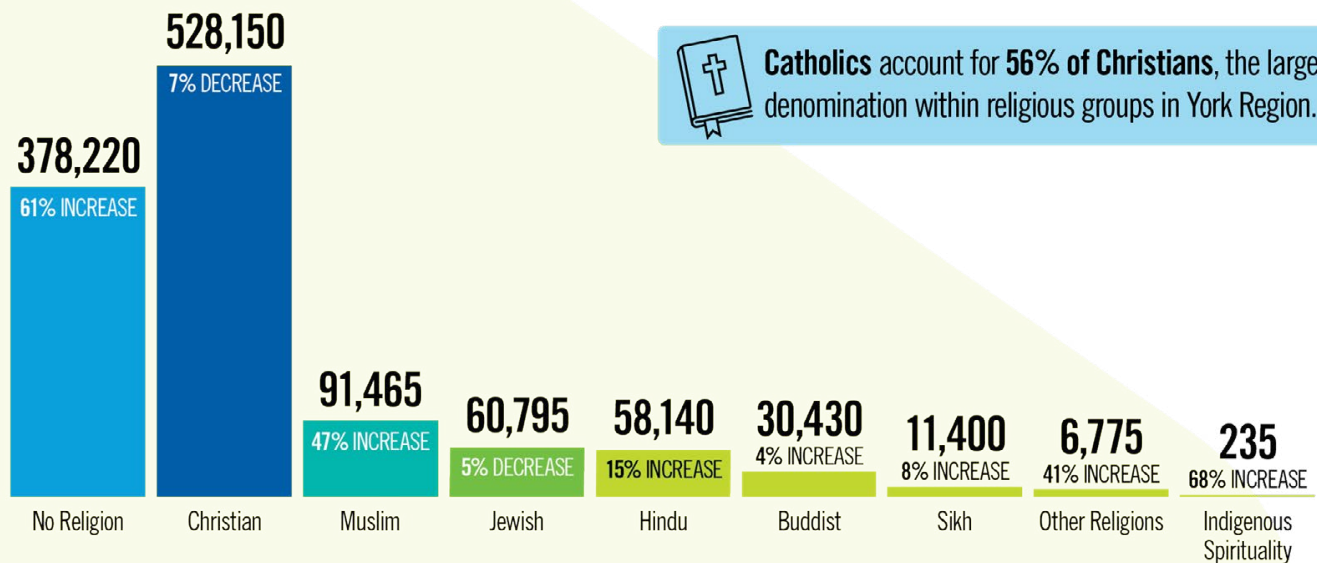


2021 Top Visible Minorities In York Region



2021 Population by Religious Affiliation

For York Region and % change since 2011



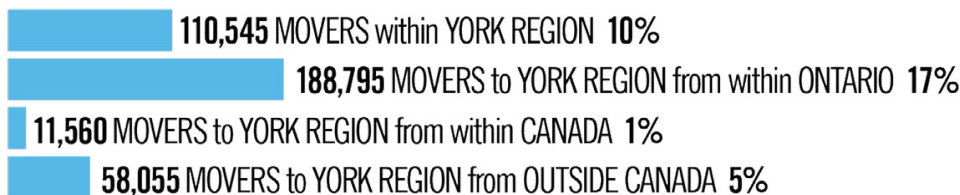
Catholics account for **56%** of Christians, the largest denomination within religious groups in York Region.

2021 Mobility Status: Change in Place of Residence

in York Region from 2016 to 2021

744,615 NON-MOVERS  **67%**

368,965 MOVERS  **33%**



33%

of York Region residents **changed their place of residence** in the last five years, a **1% DECREASE** since 2016



2021 Top Countries of Origin

For Recent Immigrants to York Region

Rank	Country of Origin	Number of People
1	China	18,805
2	Iran	5,290
3	India	5,050
4	Philippines	2,865
5	Pakistan	2,100
6	Hong Kong	1,450
7	United States	1,210
8	Turkey	1,110
9	South Korea	1,010
10	Ukraine	935

2021 Top Ethnic Origins

In York Region

Rank	Ethnic Origin	Number of People
1	Chinese	263,900
2	Italian	145,695
3	English	86,435
4	Canadian	75,990
5	Irish	66,465
6	Scottish	65,430
7	Indian (India)	57,990
8	Iranian	43,545
9	Jewish	38,670
10	Russian	36,780

Definition

Ethnic Origin - Refers to the ethnic or cultural origins of a person's ancestors. An ancestor is usually more distant than a grandparent.

Mobility Status - Refers to the status of a person with regard to their place of residence in 2021 in relation to their place of residence in 2016.

Recent Immigrant - Refers to a person who obtained a landed immigrant or permanent resident status up to five years prior to a given census year.

Religion - Refers to the person's self-identification as having a connection or affiliation with any religious denomination, group, body, sect, cult or other religiously defined community or system of belief. Religion is not limited to formal membership in a religious organization or group.

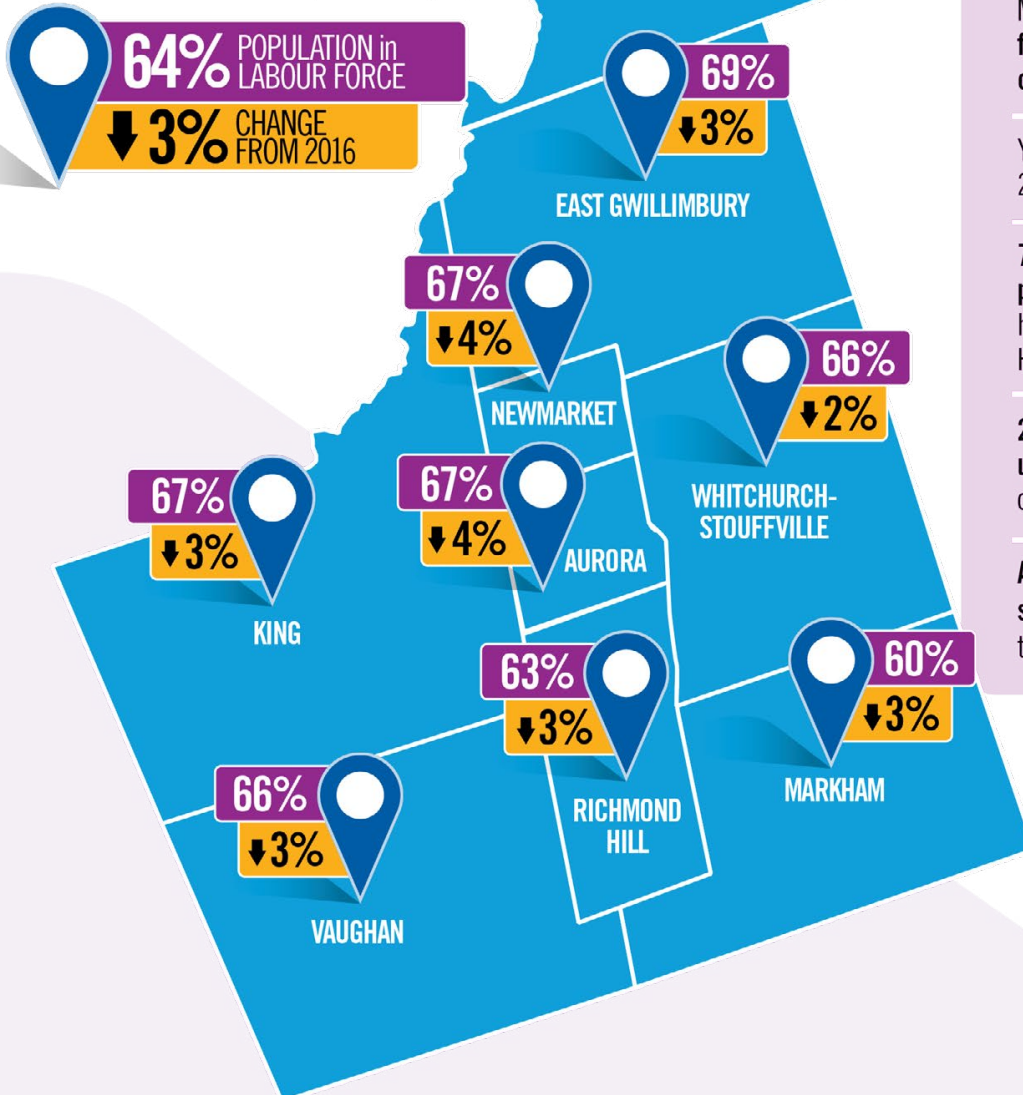
Visible Minority - Defined by the Employment Equity Act as "persons, other than Aboriginal peoples, who are non-Caucasian in race or non-white in colour". The visible minority population consists mainly of the following groups: South Asian, Chinese, Black, Filipino, Latin American, Arab, Southeast Asian, West Asian, Korean and Japanese.

For questions please contact York Region Long Range Planning at: futureyork@york.ca or call 1-877-464-9675 ext. 71530

For accessible formats or communication support, please contact Corporate Communications at: 1-877-464-9675 ext. 71234 or yr.corporate.communications@york.ca

Labour, Education and Journey to Work

2021 LABOUR FORCE PARTICIPATION AND CHANGE FROM 2016 by Local Municipality



Facts at a Glance

York Region 2021 Census Labour, Education and Journey to Work

More than **196,000 people** worked from home in 2021, an increase of **301%** since 2016 (48,950)

York Region's **unemployment rate** for 2021 was **12.7%**, up from 6.4% in 2016

73% of York Region residents **have a post-secondary education** - second highest in the Greater Toronto and Hamilton Area (GTHA)

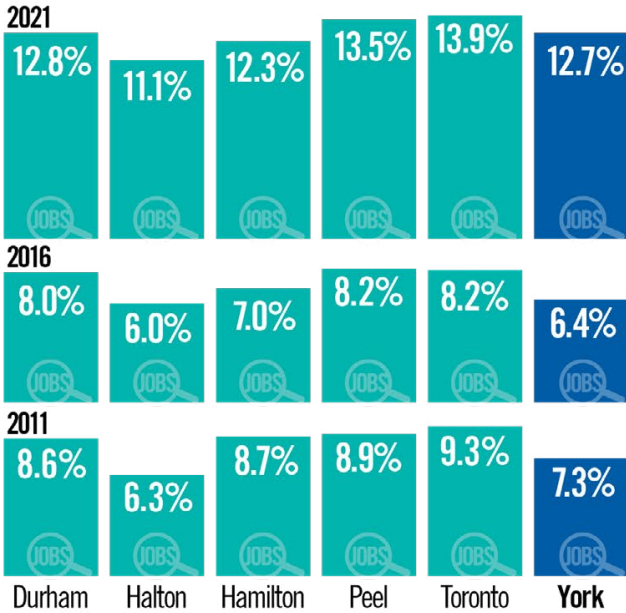
21,000 residents commuted to work using **public transit** in 2021, a decline of 68% compared to 2016

Almost half of York Region's workers spend **30 minutes or more** commuting to work

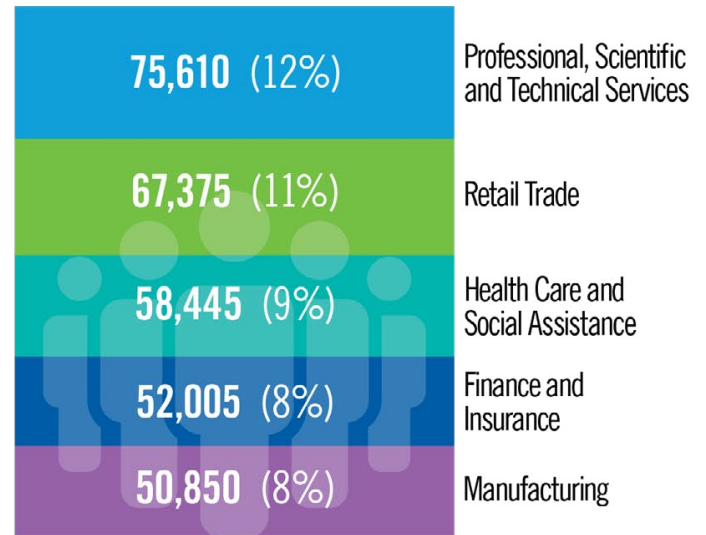
Note: All population figures do not include the census undercoverage. Totals may not add up due to rounding. Chippewas of Georgina Island First Nation is independent of The Regional Municipality of York. The Chippewas of Georgina Island are important neighbours and we have included their data in this Census bulletin where available.

Unemployment Rates

Across the Greater Toronto and Hamilton Area

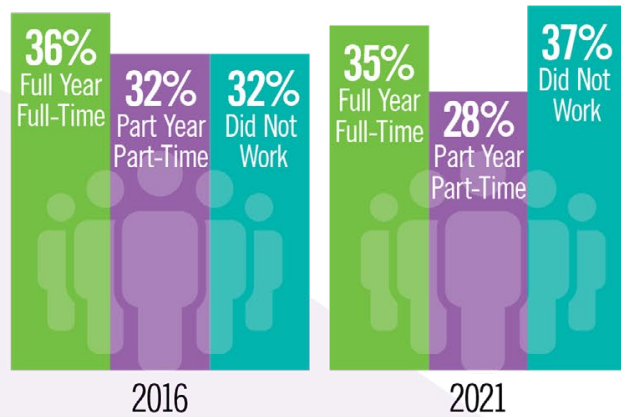


2021 Top Five Industries for Employed York Region Residents



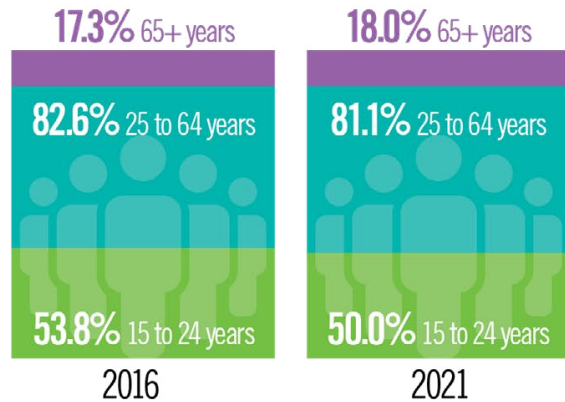
2021 Work Activity

For York Region Residents

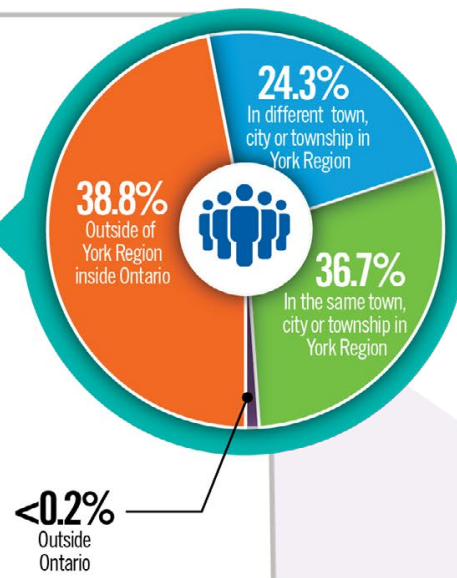
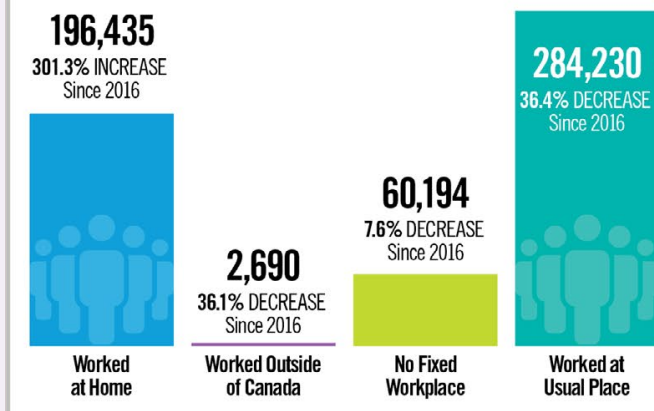


Labour Force Participation Rate by Age

For York Region Residents



2021 Place of Work for Employed York Region Residents

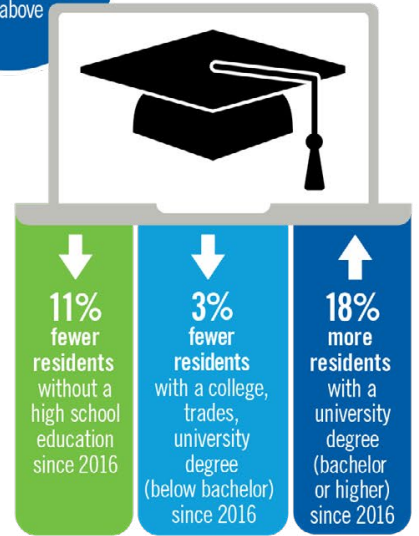
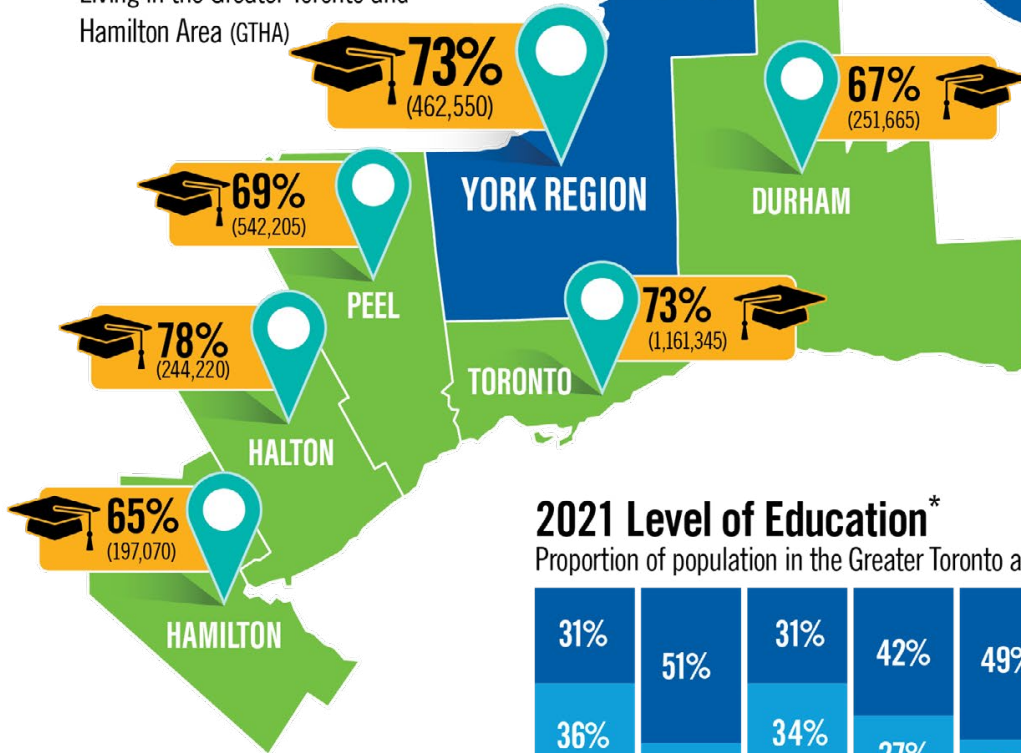


68%
of residents
live and work
in York Region

2021 Population with a Post-Secondary Education*

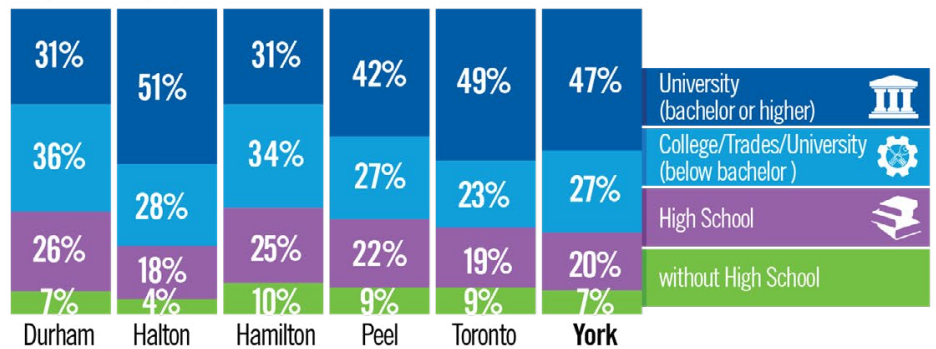
Living in the Greater Toronto and Hamilton Area (GTHA)

294,930
York Region residents had university education at bachelor level or above



2021 Level of Education*

Proportion of population in the Greater Toronto and Hamilton Area (GTHA)

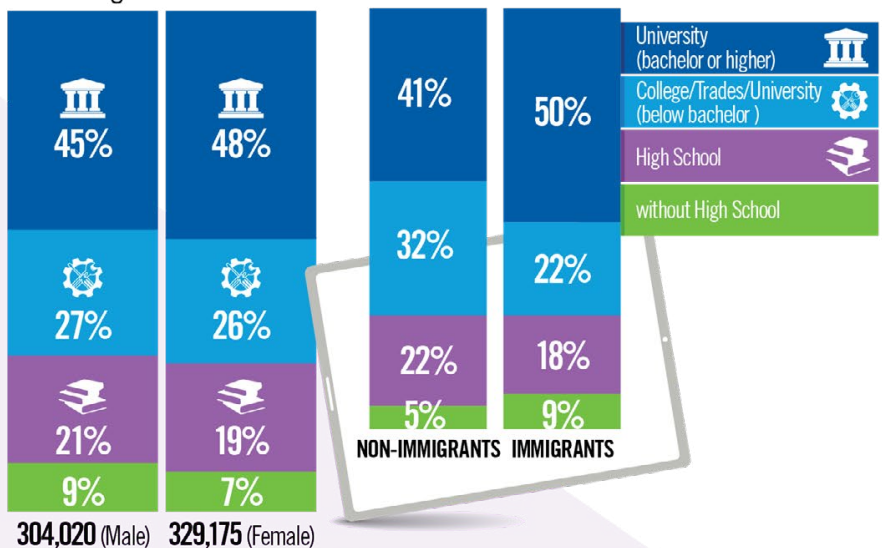


2021 Location of Post-Secondary Study* of York Region Residents



2021 Residents' Level of Education*

In York Region




50% of immigrants, living in York Region had a **university degree** (bachelor or higher) in 2021

* Includes core working age population (25-64)

2021 Residents' Level of Education*

For York Region by Local Municipality

Municipality	Without High School Education		High School Education		College/Trades/University Education (below bachelor)		University Education (bachelor of higher)	
	Count	Percentage	Count	Percentage	Count	Percentage	Count	Percentage
Aurora	1,505	4.4%	6,175	18.2%	9,160	27.0%	17,040	50.3%
East Gwillimbury	1,450	7.7%	4,055	21.4%	6,810	36.0%	6,605	34.9%
Georgina	3,055	11.4%	8,395	31.4%	10,240	38.3%	5,065	18.9%
King	795	5.6%	3,280	23.0%	4,455	31.2%	5,760	40.3%
Markham	16,510	9.1%	35,540	19.6%	41,110	22.6%	88,380	48.7%
Newmarket	3,505	7.3%	10,220	21.3%	15,005	31.3%	19,250	40.1%
Richmond Hill	4,435	4.0%	18,385	16.6%	26,050	23.5%	62,065	56.0%
Vaughan	11,850	6.8%	34,420	19.9%	47,005	27.2%	79,730	46.1%
Whitchurch-Stouffville	1,670	6.5%	5,365	20.8%	7,745	30.0%	11,030	42.7%
York Region	44,775	7.1%	12,5835	19.9%	167,580	26.5%	294,925	46.6%

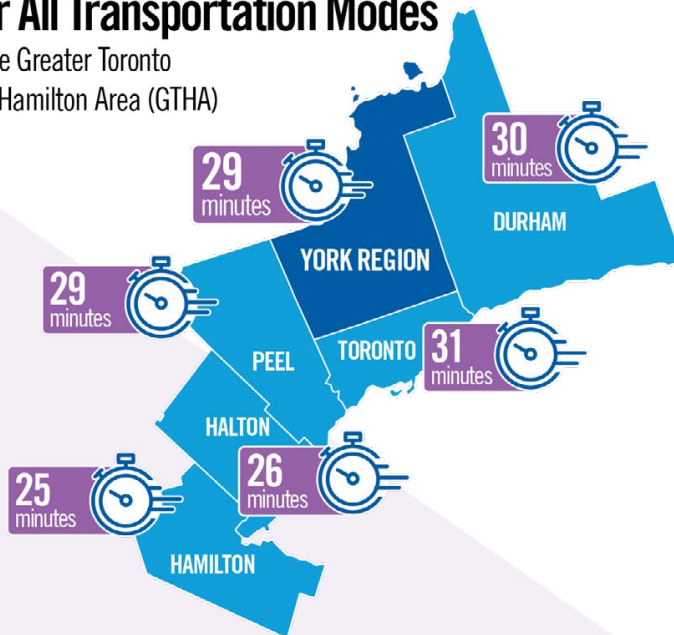


47%
of York Region residents had a **university education** at bachelor level or above in 2021

* Includes core working age population (25-64)

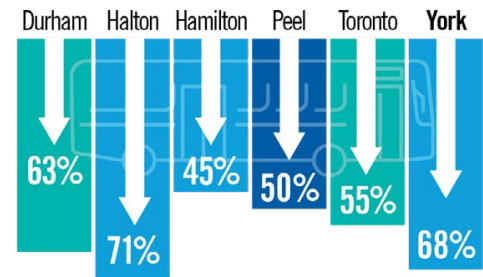
2021 Average Commuting Times For All Transportation Modes

In the Greater Toronto and Hamilton Area (GTHA)



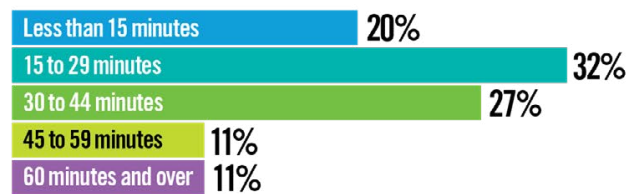
2021 Change in Use of Transit to Get to Work

For the Greater Toronto and Hamilton Area (GTHA) since 2016

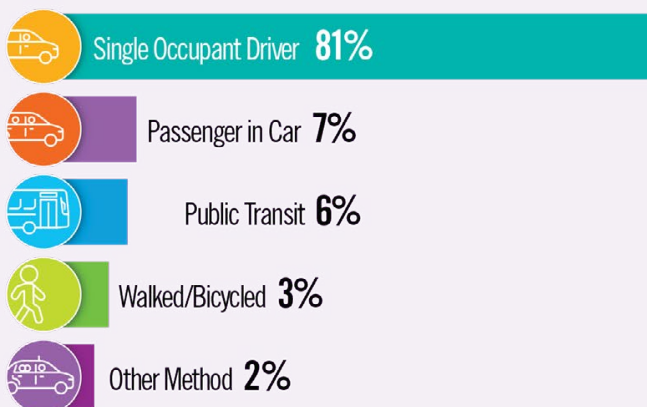


2021 Commute Time to Work

For York Region

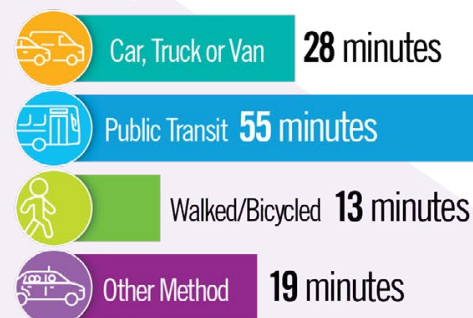


2021 Mode of Travel to Work For York Region

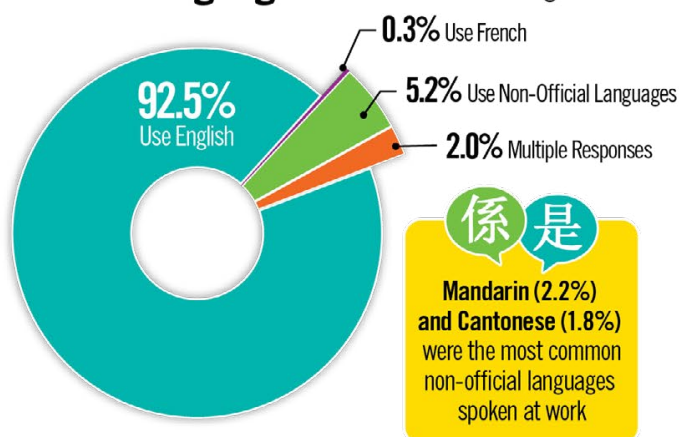


2021 Average Commute Time by Mode

For York Region



2021 Language of Work In York Region



2021 York Region Residents Working at Home

Rank	Top Industries	Number of People
1	Professional, Scientific and Technical Services	45,640
2	Finance and Insurance	33,245
3	Educational Services	19,320
4	Public Administration	11,215
5	Health Care and Social Assistance	10,075

2021 York Region Residents with No Fixed Workplace

Rank	Top Industries	Number of People
1	Construction	21,305
2	Transportation and Warehousing	6,935
3	Administrative Support, Waste Management and Remediation Services	5,550
4	Health Care and Social Assistance	4,545
5	Professional, Scientific and Technical Services	3,260

2021 York Region Residents Working at Usual Place

Rank	Top Industries	Number of People
1	Retail Trade	44,285
2	Health Care and Social Assistance	39,985
3	Manufacturing	36,735
4	Professional, Scientific and Technical Services	21,820
5	Educational Services	18,760

Definitions

College or Trades - Refers to a college, CEGEP or other non-university certificate or diploma or an apprenticeship or trades certificate or diploma.

High School Education - Refers to a secondary (high) school diploma or equivalency certificate.

Labour Force - Refers to persons aged 15 and over, who, during the census collection, were either employed or unemployed. Labour force = employed + unemployed.

Participation Rate refers to the labour force expressed as a percentage of the population for a particular age group.

No Fixed Workplace - When a person does not have a fixed address for work or does not go to the same location for work consistently.

Part-Time - Persons who worked full year mostly part time or part year mostly full time or part year mostly part time in 2015. Part year is less than 49 weeks and part time is less than 30 hours per week.

Post-Secondary Education - Refers to those whose highest level of educational attainment is an apprenticeship or trades certificate or diploma (including 'centres de formation professionnelle'); college, CEGEP or other non-university certificate or diploma; university certificate or diploma below bachelor level; or a university degree (bachelor's degree; university certificate or diploma above bachelor level; degree in medicine, dentistry, veterinary medicine or optometry; master's degree; earned doctorate).

Unemployed - Refers to persons, who, during the census collection, were without paid work or without self-employment work, were available for work and either: (a) had actively looked for paid work in the past four weeks; or (b) were on temporary lay-off and expected to return to their job; or (c) had definite arrangements to start a new job in four weeks or less.

Unemployment Rate refers to the unemployed, expressed as a percentage of the labour force.

Without High School Education - Refers to having no certificate, diploma or degree.

Working age population - Defined as those individuals aged 15 to 64.

University Education - Refers to both university certificate or diploma below bachelor level and university certificate, diploma or degree at bachelor level or above.

For questions please contact York Region Long Range Planning at: futureyork@york.ca or call 1-877-464-9675 ext. 71530

For accessible formats or communication support, please contact Corporate Communications at: 1-877-464-9675 ext. 71234 or yr.corporate.communications@york.ca

2021 YORK REGION
CENSUS REPORT
CENSUS RELEASE BULLETINS

For more information please contact
York Region Long Range Planning at:
futureyork@york.ca or call
1-877-464-9675 Extension 71508

23009_03272023

