

Guest Speaker

Dr. Stephen Hwang

**Director, MAP Centre for Urban Health Solutions,
and Chair, St. Michael's Hospital, Housing and Health**

- Professor in the University of Toronto's Department of Medicine, Dalla Lana School of Public Health and Institute of Health Policy, Management and Evaluation
- Conducts weekly clinic at Seaton House, Canada's largest homeless shelter for men
- Co-led the At Home/Chez Soi study, the largest randomized controlled trial in history to evaluate solutions to address homelessness



Exploring Effective Solutions in Response to Homelessness: From a Health Perspective

Stephen Hwang, MD, MPH

Director, MAP Centre for Urban Health Solutions, Unity Health Toronto

Staff Physician, St. Michael's Hospital, Toronto

Professor of Medicine, University of Toronto

November 23, 2023



The Housing First Model



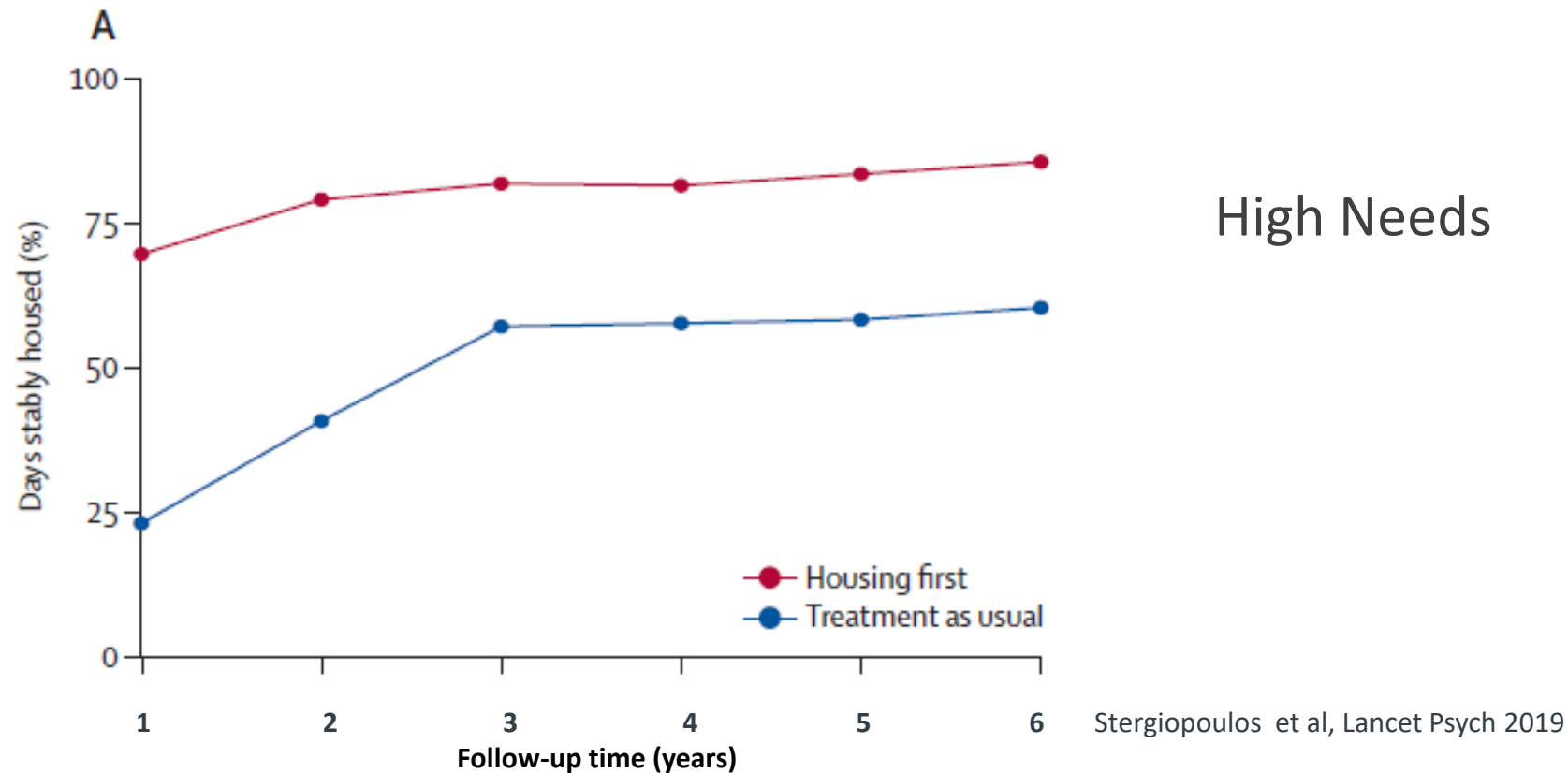
Permanent Housing:

- **Canada-Ontario Housing Benefit**
- **York Region Portable Housing Benefit**
- **Subsidized Housing (Housing York)**

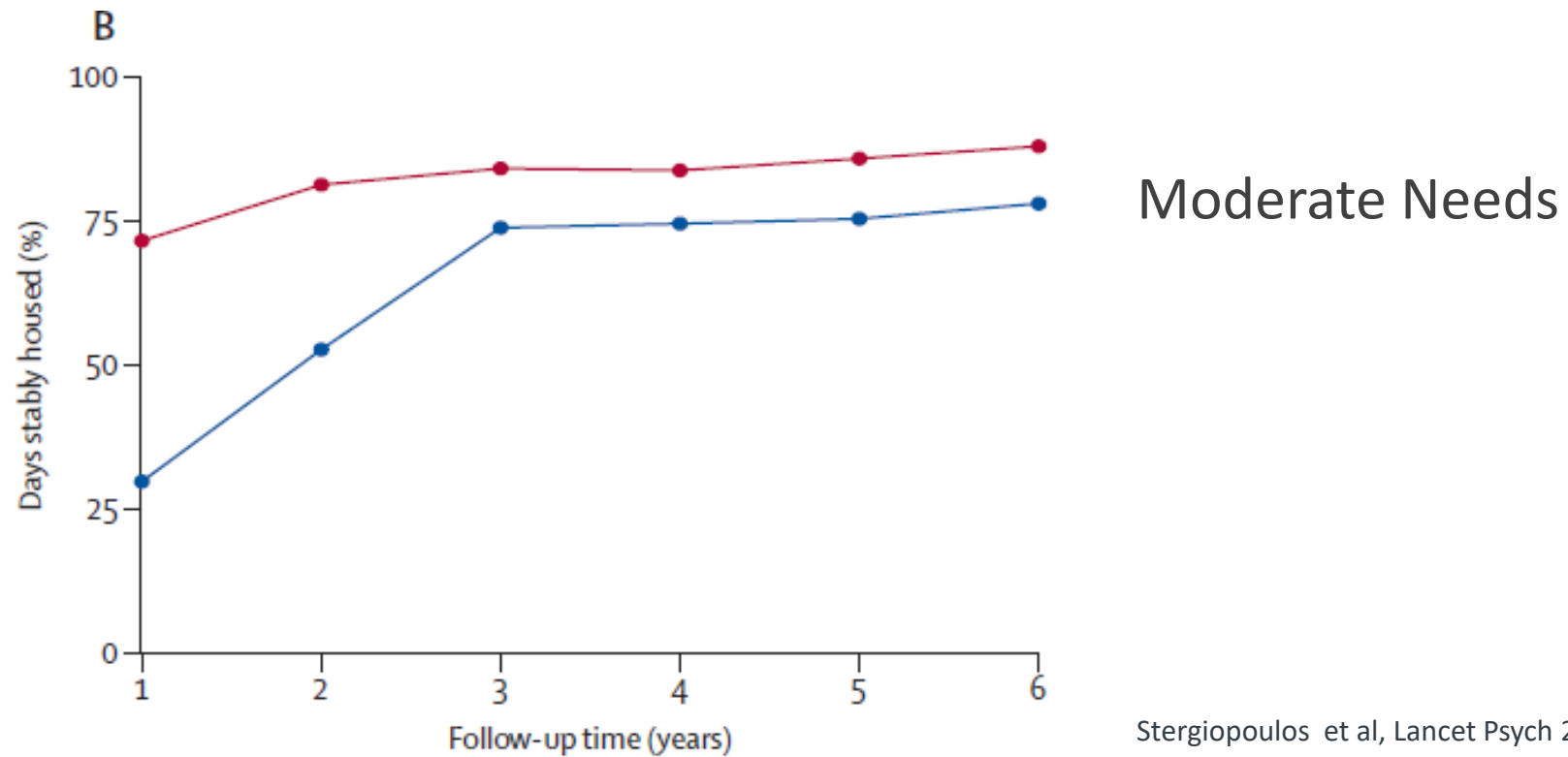
Supports:

- **Intensive Case Management**
- **Assertive Community Treatment**

Effects of Housing First on Achieving Stable Housing



Effects of Housing First on Achieving Stable Housing



Cost Effectiveness of Housing First

Cost of Housing First (per person)	\$14,500 /year
Net Cost of Housing First (accounting for cost of other services) (per person)	\$7,900 /year
Incremental Cost to House One Person	\$56 /day
Cost of Emergency Shelter (per person)	~\$30,000 /year ~\$80 /day

For Moderate Needs Individuals receiving Housing & Intensive Case Management

Costs in 2016 Dollars. Latimer et al. Cost-effectiveness of Housing First. JAMA Open 2019

Key Point #1

- Housing & service interventions must match individual needs
- High-cost, high-intensity interventions should be reserved for high-needs individuals who are chronically homeless (>6 months)

Key Point #2

- System-wide coordination at the local level is *essential*
- Prioritization needs to include a focus on people who have complex needs → Avoid “low hanging fruit” syndrome

Key Point #3

- “Care Conference Table” to identify individual needs and available community resources and match them together
- Continuity is key: Follow individuals over time across service sites

Key Point #4

- Primary care outreach model is essential
- Highest-need, highest-cost individuals are frequently found at hospitals
- Navigator Program for people experiencing homelessness who have been admitted to the hospital -- Improve transitions

Key Point #5

- Housing First programs can end chronic homelessness for *individuals*
- Reducing the *number* of people experiencing homelessness requires *housing*, not just *homelessness* programs

Key Point #6

- Deep deficit of affordable housing – will take a decade to address
- Consider alternative housing solutions
 - Motel conversions
- Ensure people have appropriate supports wherever they are housed

Thank you!

Questions?

Email: stephen.hwang@unityhealth.to

Web: maphealth.ca

Guest Speaker

Heather McDonald

CEO, LOFT Community Services

- Experience in the fields of harm reduction, community health care and street outreach
- Holds a Master of Social Work from Wilfrid Laurier University and achieved her Institute of Corporate Directors Designation
- Has helped build LOFT into one of the largest multi-service, award-winning organizations in the Greater Toronto Area



November 2023

Exploring Effective Solutions: LOFT Community Services Perspective





About LOFT

LOFT provides holistic community-based services to people facing complex mental and physical health challenges, addictions, dementia, and/or homelessness.



Kim's Story

BY THE NUMBERS



941

Staff



19,633

Clients Served
(from youth
to seniors)



1,861

Number of beds

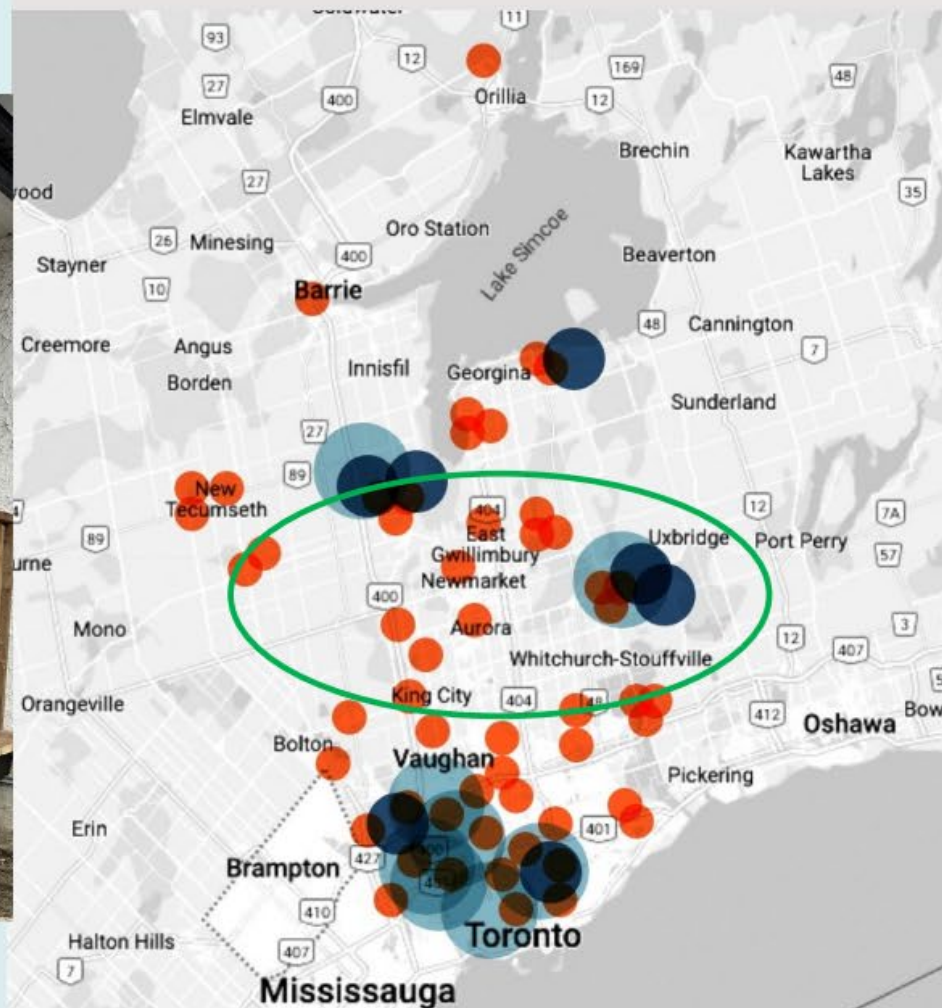


467

Clients transitioned
from hospitals to
the community or
long-term care

HOUSING AND SERVICE HUB LOCATIONS

Number of housing sites and service hubs by
numbers served



Crosby Avenue, 2021



Davis Drive, 2022



Thank you

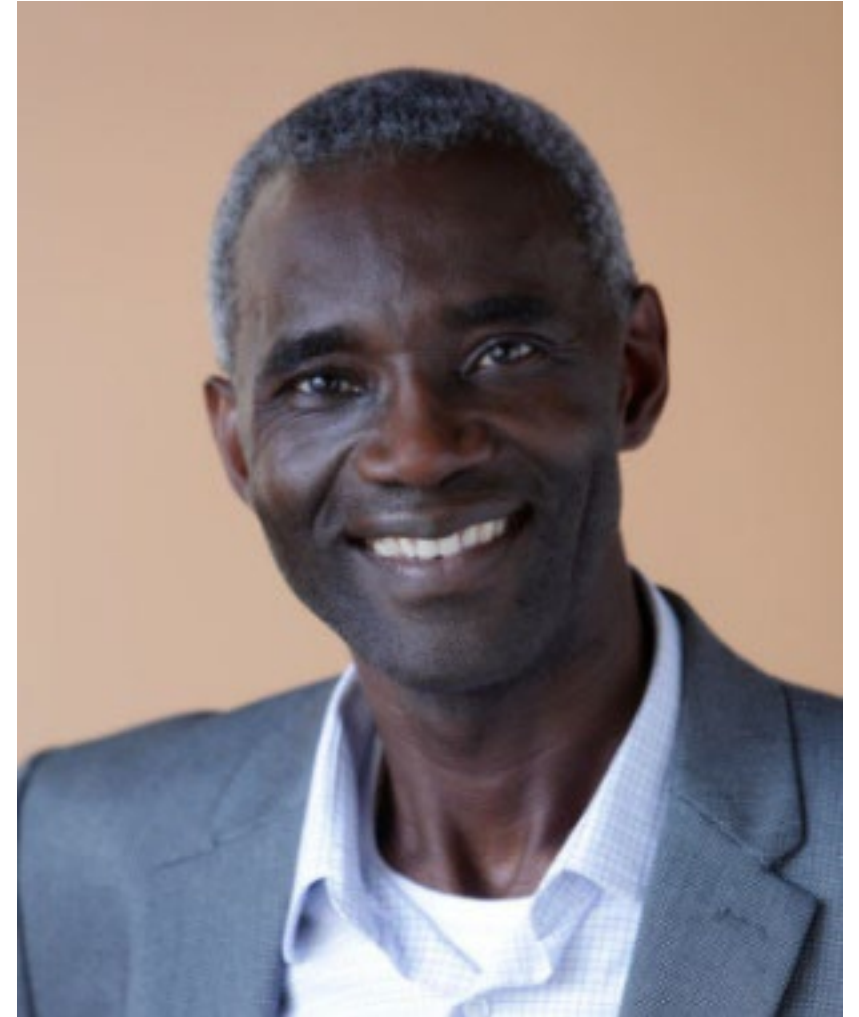


Guest Speaker

Clovis Grant

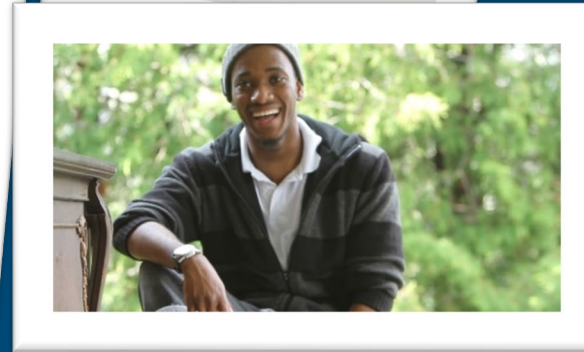
CEO, 360°kids

- CEO of 360°kids, which partners with York Region communities and organizations to develop opportunities for youth who are at risk of or experiencing homelessness
- Provided leadership in the Human Services sector for over 25 years in the areas of homelessness, employment, social assistance, mental health and disabilities
- Previously worked with HOPE worldwide Canada, the Regional Municipality of York and Eva's Initiatives





**Clovis Grant, CEO
360°kids**



**Support.
Inspire.
Overcome.**

Exploring Effective Solutions in Response to Homelessness: 360°kids' Perspective

Surrounding Youth in Crisis with Compassion, Care & Opportunities to Thrive

Support.
Inspire.
Overcome.

- **Mission:** To prevent homelessness by helping youth at risk or in crisis transition to a state of safety and stability
- **Vision:** Every kid has a safe home
- **Four Pillars of Support:**



Housing



Employment



Health & Well-Being



Education

Youth Programming (ages 16 to 26)

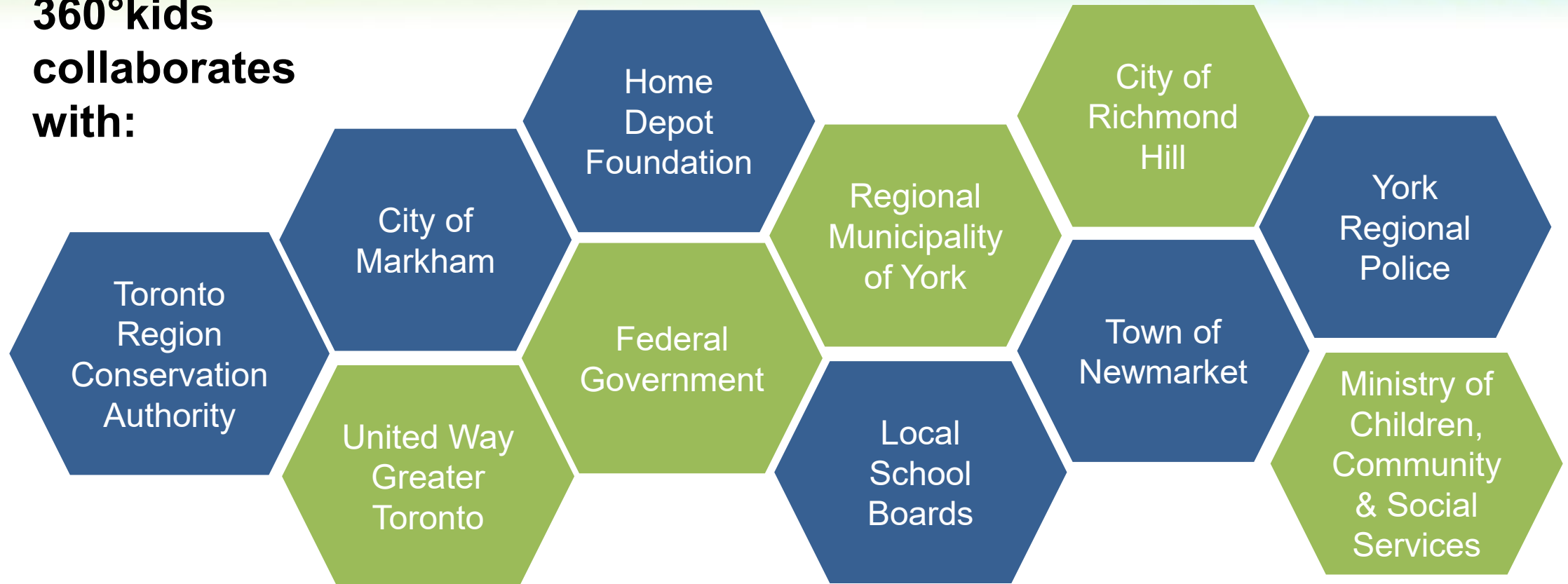
Support.
Inspire.
Overcome.

- 360°kids provides 14 emergency housing beds, 11 transitional housing beds and drop-in programming for youth, ages 16 to 26 in Richmond Hill
- 13 beds in Markham in partnership with Ministry of Children, Community & Social Services & child welfare agencies
- Six anti-Human Trafficking beds; 13 scattered sites providing 24 transitional beds for three years
- Outreach services include Pop-Up; Afterschool programs in seven communities; Nightstop; Employment Programs; Counselling; Family and Natural supports

Collaboration and Partnerships: Critical for Youth Success

**Support.
Inspire.
Overcome.**

**360°kids
collaborates
with:**



Why are Youth Experiencing Homelessness?

Support.
Inspire.
Overcome.

- Leading cause of youth homelessness is family breakdown (77%)¹
- Financial pressures
 - Rising cost of housing and food
- Parents and youth mental health
- Systemic discrimination and racism – Black youth; 2SLGBTQ+
- Changing face of youth homelessness
 - Increase in number of new immigrants accessing programs and services

¹ Source: *Without a Home Study, 2016*

Exploring Effective Solutions to Youth Homelessness

Support.
Inspire.
Overcome.

PREVENTION

- Early intervention with families, including financial supports
- Deeply subsidized housing opportunities with wraparound supports, e.g., Toronto Region Conservation Authority partnership
- Culturally specific interventions, e.g., Black youth transitional housing
- Nightstop – low cost; spare bedrooms in the Region
- High school education support through the **iGrad** program
- Paid employment programs (e.g., Base 4 Success, Every Bite Matters)
- Youth voice - spaces for youth to develop leadership and contribute

Youth Voice

**Support.
Inspire.
Overcome.**

**Addictions
Support**

**Peer
Mentors**

Compassion

**Non-
Judgmental
Family Support**

**Early
Intervention**



**Quality
Housing with
Supports**



**Support.
Inspire.
Overcome.**

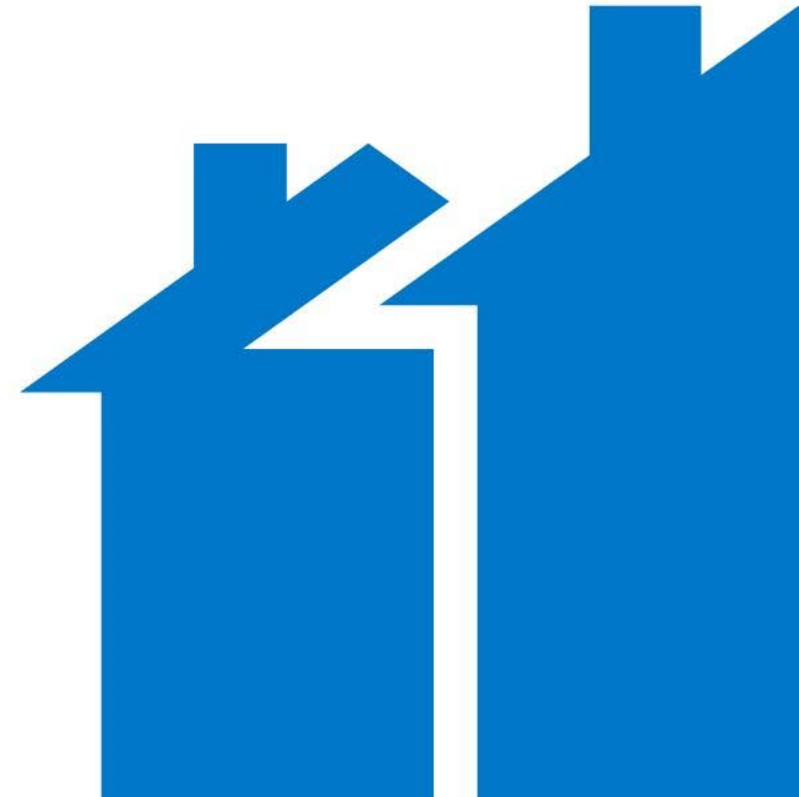
**Questions?
Thank you!**

**Contact: Clovis Grant, CEO 360°kids
clovis.grant@360kids.ca**

EXPLORING EFFECTIVE SOLUTIONS IN RESPONSE TO HOMELESSNESS: Blue Door Perspective

Michael Braithwaite, CEO, Blue Door

BLUE
DOOR



Guest Speaker

Michael Braithwaite

CEO, Blue Door

- Previously worked at Raising the Roof and 360°kids in York Region
- Helped launch Construct, Blue Door's first employment social enterprise
- Launched three supportive housing programs at Blue Door, including the first safe space for 2SLGBTQ+ youth in York Region, a national housing and homelessness podcast and merger with Mosaic Interfaith Out of the Cold



A LEADER IN HOUSING SOLUTIONS



Vision: A Canada where everyone can access dignified housing.



Mission: Enable housing stability by driving innovative health and employment solutions that prevent and end homelessness.

BLUE DOOR'S THREE STRATEGIC PILLARS TO EFFECTIVELY ADDRESS HOMELESSNESS



Housing: 250 people/year receive housing access and retention supports



Health: 250 people/year receive health supports, enabling housing stability



Employment: 250 people/year receive training and gain employment

ORGANIZATIONAL PRIORITIES

How we are addressing gaps and identified issues in our community and beyond:

1. Develop local housing solutions across Canada

- Launch Housing for All Community Land Trust

2. Advocate for policy change to enable access to dignified housing

- Hired government relations firm to advocate for change

3. Housing access and retention supports

- Set a goal of 400 for 2024

4. Health supports, enabling housing stability

- Set a goal of 400 for 2024.

5. Training and gain employment

- Set a goal of 300 Construct participants for 2024

YORK REGION + BLUE DOOR

- Blue Door partners with the Region to comprehensively address homelessness by providing seasonal and emergency housing services, as well as transitional and supportive housing programs.
- Blue Door collaborates with the Region through data sharing and coordination with other partners to track program and client progress and address challenges addressing homelessness as a community.

EMERGENCY & TRANSITIONAL HOUSING

Programs Operated by Blue Door

- **Porter Place (East Gwillimbury):** 30 bed emergency housing location for adult men
- **Leeder Place (East Gwillimbury):** The only emergency housing for diverse families in York Region offering 15 units or up to 60 beds
- **Kevin's Place (Newmarket):** 10 bed emergency housing location for adult men
- **Mosaic Interfaith Out Of The Cold (Markham, Vaughan and Richmond Hill):** Provides 30 seasonal shelter beds, seven days a week from October to June

AARON'S STORY

"Thank you, Blue Door Kevin's Place in Newmarket! You instantly made me feel welcomed and safe in a supportive and encouraging environment. I cannot thank you enough for helping me get my life and other's lives back on track and ready for a better life."

143 individuals have moved into emergency and seasonal housing as of Q3, 2023

EFFECTIVE PROGRAMS

Transitional & Supportive Housing

Abode: Transitional housing for five families

Forward: Transitional housing for five senior men

INNclusion: Transitional housing for four – 2SLGBTQ+ youth

Passage House: 18 units of transitional housing for men

Abode, Forward, and INNclusion are based on a scattered site model that works with participants in a community setting. This allows individuals and families to connect to the local community providing direct “transition” into the local housing market.

**BLUE
DOOR**



EFFECTIVE PROGRAMS

Health Supports

Health Hub (East Gwillimbury)

- 50% fewer 911 calls since the program launched
- 331 visits with the onsite nurse and doctor in 2022

Hospital In-Reach Worker (Southlake Regional Hospital):

- 159 people supported by the In-Reach Worker in 2022

These innovative solutions reflect the intersection between homelessness and health, specifically the adverse effects of prolonged homelessness and bring access to healthcare and health equity to people experiencing homelessness.

BLUEDOOR

“

"Supporting the Health Hub means providing primary care access to people who have previously been cut off from many mainstream medical services due to prejudice, and assumptions. I enjoy listening to the stories and meeting clients where they are at to help them address the medical concerns that are most important to them."



-Dr. Henry
Family Physician at the Health Hub

EFFECTIVE SOLUTIONS TO DISRUPT HOMELESSNESS IN YORK REGION

Construct (Across YR):

- 220 participants enrolled in 2023
- 80% of participants enter the construction sector
- 80% of participants employed after Construct

Housing for All Community Land Trust:

- Thanks to collaboration and support from York Region, Blue Door is launching its land trust innovative in 2023

**BLUE
DOOR**

“Anyone who is willing to learn and put in the leg work should consider joining this program. Construct has a strong support team, and they are willing to help you in any way possible. I wouldn’t have wanted to miss this opportunity for the world. If I could do the program again, I would, hands down!”

- Construct Alumni



PARTNERSHIPS

Addressing Homelessness through Collaboration

1. Funders Fueling Innovation

- Regional Municipality of York
- Private and Corporate Foundations (e.g., TD Bank, P. & L. Odette Family Foundation)
- Individual and Corporate Donors

2. Program Partners

- Southlake Regional Health Centre
- LiUNA Local 506 Training Centre
- LOFT, CMHA, Krasman Centre, Yellow Brick House and others



3. Systems Change Partners

- Municipalities
- Government of Ontario and Canada's support of Construct as a part of the solution to addressing homelessness

QUESTIONS?

Thank you!

michael.b@bluedoor.ca

Follow Us!



@BlueDoorServices



@BlueDoorSupport



@BlueDoorSupport



Blue Door