
Report of the Commissioner of Public Works
Traffic and Pedestrian Enhancements
Keele Street south of King Road, Township of King

1. Recommendation

1. Bylaw 2023-34 to prohibit or regulate parking and stopping on Regional roads be amended to add parking controls as outlined in Appendix A.
2. The Regional Clerk circulate this report to Clerk of the Township of King and Chief of York Regional Police.
3. The Regional Solicitor and General Counsel prepare the necessary bylaw amendments.

2. Purpose

This report responds to a request from the Township of King for the Region to implement intersection improvements, a pedestrian crosswalk, and prohibit stopping on Keele Street.

Key Points:

- Planned improvements at the intersection of Keele Street and King Road will enhance safety and reduce delay
- A mid-block pedestrian signal funded by the Township of King will be installed on Keele Street south of King Road to improve pedestrian safety and connectivity in the King City core area
- Stopping prohibitions are required on Keele Street to support planned improvements

3. Background

Township of King requested the Region assume certain roads and make improvements to Keele Street in King City

[June 12, 2023](#), Township of King Council passed a motion to request the Region assume Keele Street, from Lloydtown/Aurora Road to Davis Drive, and 17th Sideroad, from Jane Street to Dufferin Street. [January 25, 2024](#), Regional Council approved the assumption of these road sections. Township of King's resolution further requested intersection improvements at Keele Street and King Road, a pedestrian crosswalk on Keele Street south of King Road and revision of the Parking and Stopping on Regional Roads Bylaw.

Intersection improvements at Keele Street and King Road should reduce delay and enhance safety

The intersection of Keele Street and King Road is located within the King City core area containing many local businesses, Township facilities, parks and points of interest. It also serves as a major thoroughfare for residents and commuters travelling to the GO station, Highway 400 and other destinations. Dedicated left turn lanes are currently provided for east and west traffic on King Road. However, north and south traffic on Keele Street must make left turns from the through lane, which results in safety concerns and traffic delays.

Region's Traffic and Pedestrian Signal Policy allows for pedestrian signals to be installed at the cost of the requestor

Through the Township of King resolution, King staff requested a new pedestrian crossing facility be installed on Keele Street, approximately 120 metres south of King Road at All-Saints Anglican Church. The requested crossing will align with an existing footpath connecting Doctors Lane to Keele Street and is intended to improve traveller safety by reducing jaywalking and enhance pedestrian connectivity in the King City core area.

The Region's [Traffic and Pedestrian Signal Policy](#) identifies guidelines and criteria for determining acceptable locations for traffic and pedestrian signal installations requested on Regional roads. Policy guidelines include the provincial criteria established through the Ontario Traffic Manual Book 12 and a comprehensive decision-making assessment tool. The assessment tool focuses on advancing signal installations which do not meet the provincial criteria but may help increase public safety. When justified by the assessment tool, traffic and pedestrian signals may be installed at the cost of the requestor.

The proposed mid-block pedestrian signal requested by Township of King satisfies the assessment tool evaluation criteria outlined in the Traffic and Pedestrian Signal Policy. Township of King has committed to fund the design and installation of the proposed mid-block pedestrian signal. Township of King and the Region have agreed that the Township of King, as the requestor, funds the construction of the pedestrian signal, as permitted by the Region's Traffic and Pedestrian Signal Policy.

4. Analysis

New stopping prohibitions are required on Keele Street to implement planned improvements

About 40 on-street parking spaces are currently permitted on both sides of Keele Street south of King Road. Planned improvements for this intersection require unobstructed lanes of traffic in the northbound and southbound directions. Township of King has requested the Region implement a stopping prohibition in this area.

A parking use survey was included in the engineering study, which showed parking capacity is available in nearby designated parking areas. On-street parking is permitted on both sides of Doctors Lane. A municipal public parking lot is located approximately 55 metres north of King Road. In coordination with Township of King, the Region commissioned an independent engineering study to assess operating conditions and future needs. The study concluded the intersection is expected to operate over capacity by 2026 if no actions are taken and recommended implementing left turn lanes in the north and south directions on Keele Street.

The study recommended implementing exclusive north-south left turn lanes by reconfiguring traffic lanes within the current pavement width. However, implementing left turn lanes requires prohibiting stopping anytime on Keele Street south of King Road to Elizabeth Grove (on the west side) and to All-Saints Anglican Church (on the east side). Staff support the study recommendations and have incorporated implementation into planned Capital Delivery roadworks for this location beginning in 2024.

Township of King staff have also indicated additional parking has been identified at the current King City Community Centre and Arena. A pedestrian pathway on the north side of All Saints Church has been constructed to provide a direct connection from the proposed parking areas to the proposed pedestrian signal on Keele Street. The pathway will be well lit and maintained by the Township of King.

To accommodate the intersection improvements and pedestrian signal installation, staff recommend implementing stopping prohibitions on Keele Street (outlined in Appendix A and illustrated in Appendix B).

5. Financial Considerations

Costs for the stopping prohibition signs are estimated to be \$15,000 and are included in the 2024 approved Public Works Operating Budget. Capital costs and capital spending authority for intersection improvements at Keele Street and King Road have been included in the approved 2024 Public Works Capital Plan. Installation costs for the mid-block pedestrian signal are about \$150,000 and will be funded by the Township of King.

6. Local Impact

Township of King requested intersection improvements at Keele Street and King Road, parking prohibitions on Keele Street and installation of a mid-block pedestrian signal on Keele Street. These improvements are intended to improve safety and traffic operations in the King City core area. While on-street parking on Keele Street will be impacted, additional parking capacity is available in designated parking areas nearby.

[York Region Vision Zero Traveller Safety Plan](#) prioritizes the safety of our most vulnerable road users and influencing behaviours at key locations where improvements will have the greatest impact. Planned improvements outlined in the report support emphasis areas identified in the Plan.

7. Conclusion

In response to the Township of King's resolution, exclusive north/south left turn lanes on Keele Street at King Road have been incorporated into existing planned Capital Delivery roadworks beginning in 2024 to enhance safety and reduce delay. Additionally, a mid-block pedestrian signal will be installed on Keele Street, south of King Road, by the Region and funded by the Township of King to improve pedestrian safety and connectivity in the King City core area.

To accommodate the intersection improvements and pedestrian signal installation, an amendment to Bylaw No. 2023-34 to prohibit or regulate parking and stopping on Regional roads is required to implement new stopping prohibitions on Keele Street. Subject to Council approval, the Regional Solicitor and General Counsel will prepare the necessary bylaw amendments and forward applicable copies to the Township of King and York Regional Police.

For more information on this report, please contact Joseph Petrunaro, Director, Roads, Traffic and Fleet, at 1-877-464-9675 ext. 75220. Accessible formats or communication supports are available upon request.

Recommended by:



Kyle Catney

General Manager (A), Operations and Services



Laura McDowell, P.Eng.

Commissioner of Public Works



Approved for Submission:

Erin Mahoney

Chief Administrative Officer

May 21, 2024

#16022980

Appendix A – Parking Controls to be Added to Bylaw No. 2023-34

Appendix B – Proposed and Existing Parking Controls

Table 1
Parking Controls to be Added to Bylaw No. 2023-34
Schedule “D”, Table 3 – Stopping Prohibited

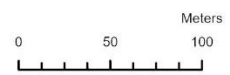
Highway	Side	Limits	Times/Days
Keele Street (Y.R. 6)	West	From the south limit of King Road (Y.R. 11) to the north limit of Elizabeth Grove	7:00 a.m. to 9:00 a.m. Monday to Friday
Keele Street (Y.R. 6)	East	From 150 metres south of the south limit of King Road (Y.R. 11) to the south limit of King Road (Y.R. 11)	Any time



York Region
 Produced by:
 The Regional Municipality of York
 Roads and Traffic Operations,
 Transportation Services
 March 2024

Data: Queen's Printer
 for Ontario 2003-2024
 Imagery:
 See York.ca for disclaimer information.

Proposed and Existing Parking Controls
 Traffic and Pedestrian Enhancements
 Keele Street south of King Road,
 Township of King
 June 13, 2024



Legend	
	Proposed Stopping Prohibition - Anytime
	Proposed Stopping Prohibition - Time Specific
	Existing Stopping Prohibition - Time Specific
	Existing Parking Prohibition - Time Specific
	Existing Footpath

\\client\c3\transportation\109 - Traffic\Safety_02\Projects\Council Report\2024\2024.06 - Traffic & Ped Enhancements Keele St\King\Working Files\Appendix B.aprx