

SM4RT LIVING PLAN **BALANCED SCORECARD** 2018



WHAT IS THE SM4RT LIVING PLAN?

The SM4RT Living Plan is York Region's Integrated Waste Management Master Plan. Developed by York Region and its local municipal partners and approved by council in 2013, the plan sets the course for waste management in the Region for the next 25 to 40 years. Over the past five years, thousands of residents have helped implement priority initiatives with a focus on the 4R's: reduce, reuse, recycle and recover. The SM4RT Living Plan is moving York Region away from the traditional linear model of waste management to a more sustainable circular economy approach.



PRODUCTS AND
PACKAGING

PRODUCTS AND PACKAGING

- Advocating to the province to make producers responsible for capture and recycling of their products to drive better packaging and product design that is more recyclable and durable for reuse
- Advocating for provincial leadership to drive change and create opportunities for innovative solutions that result in increased diversion and improved environmental outcomes



CONSUMER
CHOICES

INFLUENCE CONSUMER CHOICES

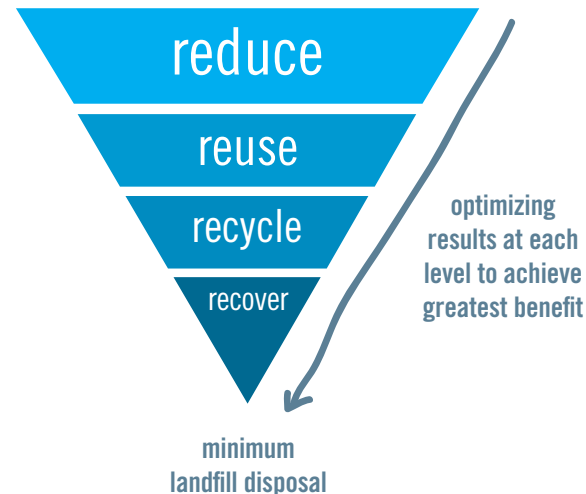
- Providing residents opportunities for reuse and repair through innovative programs such as Repair Cafés, Curbside Giveaway Days and textile diversion
- Building community partnerships to expand programs and shift mindsets and behaviours to reduce consumption and increase reuse



RECYCLING &
COMPOSTING

INCREASING DIVERSION THROUGH RECYCLING AND COMPOSTING

- Providing convenient, accessible and efficient collection programs to single-family and multi-residential homes
- Reclaiming energy and resources such as metals from residual waste
- Proactively planning for long-term capacity needs and leveraging technology to improve efficiency of infrastructure
- Maximizing opportunities for recycled material to become new products and packaging



4Rs

REDUCE

2031 Target: Reduction of green bin material by 15%, yard waste by 5% and other waste streams by 5%

REUSE

2031 Target: Lower garbage generation by 5% through support of reuse initiatives

RECYCLE

2031 Target: Increase material diverted from landfill by 4%

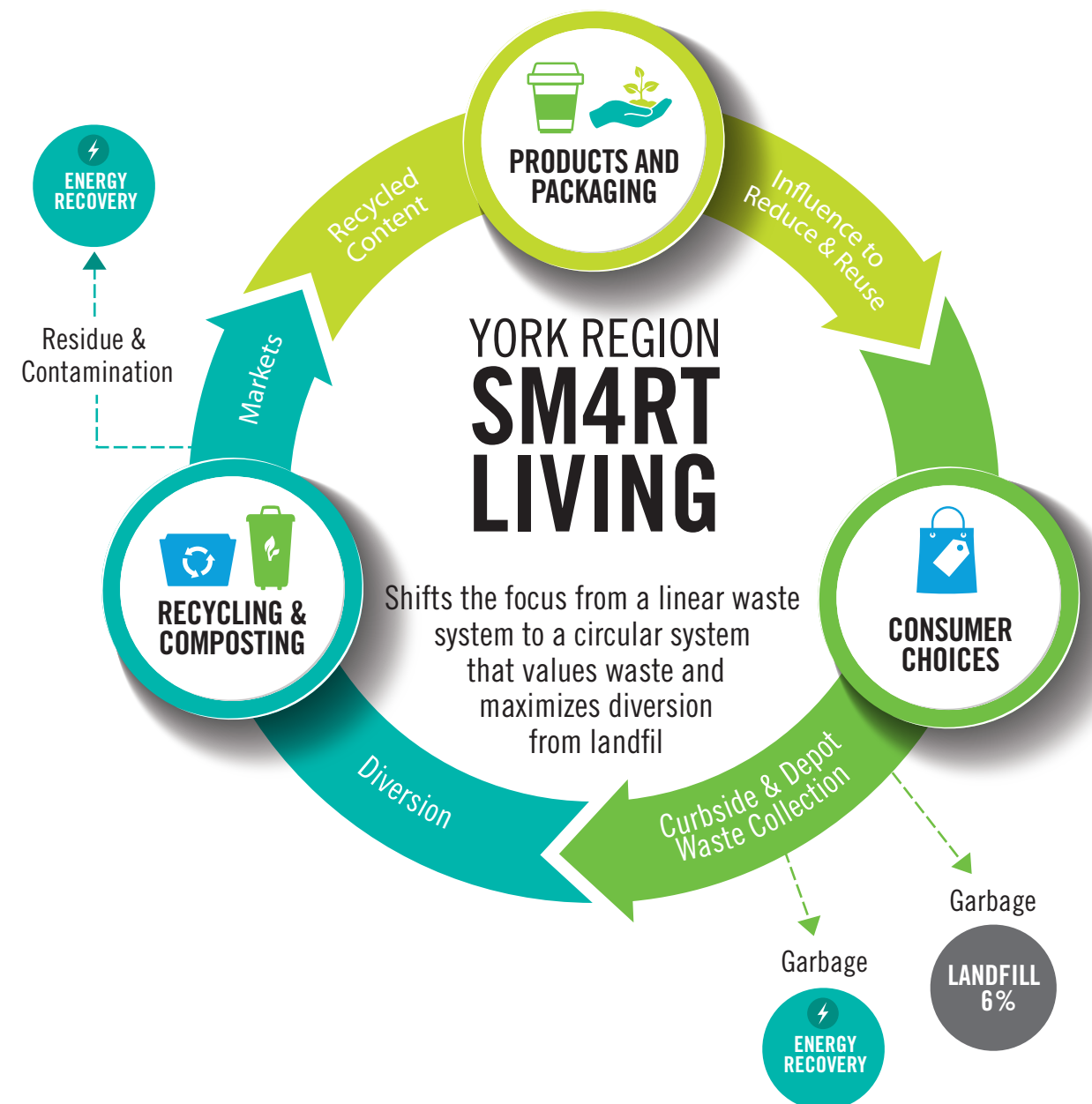
RECOVER

90% diversion from landfill Capturing 60 to 80% of metals from residual waste

LINEAR ECONOMY



CIRCULAR ECONOMY



YORK REGION WASTE GENERATION RATE

WHAT IS IT?
Waste generation rate is a tonnage per person measurement (kg/capita) used to track progress towards the SM4RT Living Plan waste reduction target. The rate shows curbside and depot-collected material separately.

WHY TRACK IT?
The SM4RT Living Plan focuses on waste reduction initiatives as well as increasing diversion. A new metric was needed to track progress towards long-term targets. Curbside waste generation rate is more representative of the waste reduction initiatives because it tracks materials residents are placing out at the curb.

WHAT ARE THE TRENDS?
The waste generation rate is complex and varies year to year. There are external factors such as housing types, population growth, seasonal population and climate change which all affect the rate differently per municipality.
The SM4RT Living programs are driving long-term behaviour change to reduce waste generation. Successful programs are continuing to be expanded.

INCREASING SUCCESS OF REUSE PROGRAMS
The Region in collaboration with local partners hosted seven Repair Café's. Curbside Giveaway Days were hosted in eight municipalities and a first time promotion of an online swapping platform to facilitate the process was introduced. Textile collection continues to grow through locally driven programs in some of the northern six municipalities led by the Town of Aurora.

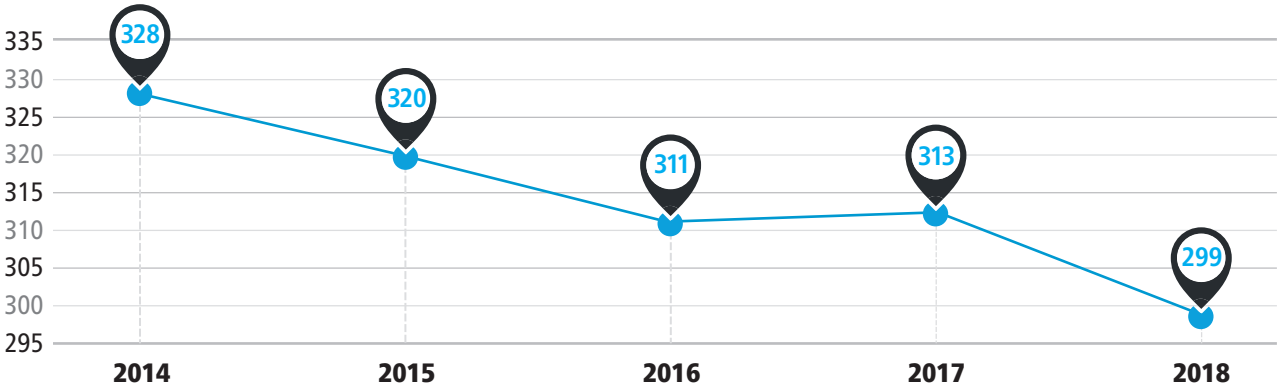
NEW PARTNERSHIPS TO SUPPORT INNOVATIVE PROGRAMS
York Region, Markham Public Library and York Region Makers established a partnership to develop the first Lendery - a library of things- such as household items, sporting goods and hand tools. In 2018, planning began with a donation drive to build the inventory for the Milliken Mills Lendery, which is set to launch in 2019. Residents contributed 98 items to help build this community resource.

The Region's Water Conservation and Efficiency group teamed up with Waste Management to conduct water and food waste audits at York Region run long-term care facilities in Newmarket and Vaughan identifying recommendations for food waste reduction.

REGION'S LEADERSHIP IN FOOD WASTE INFLUENCING POLICY AT PROVINCIAL AND FEDERAL LEVEL
The Region was one of the first municipalities to have a food waste reduction program. Recent provincial policy, such as the Food and Organic Waste Framework, aligns with the SM4RT Living Plan's food waste reduction strategy. The new Canada Food Guide reflects similar messaging to the Good Food Program promoting mindfulness around eating habits and cooking more often at home.

FOCUS ON REDUCTION IS A COST-EFFECTIVE, RESILIENT APPROACH
Through the SM4RT Living Plan, Regional Council has demonstrated leadership in building the resilience of the waste management system and influencing change through continued advocacy efforts. The Five Year Review and Update will focus direction of policy and programs to ensure the Region and local municipal partners continue to address challenges in the waste management system.

Curbside Waste Generation Rate 2014-2018



WASTE MANAGEMENT PERFORMANCE

Curbside Waste Generation Rate (kg/capita)

MUNICIPALITY	CURBSIDE COLLECTION				SPECIAL PROGRAMS (Textiles, e-waste, batteries, scrap metal)	TOTAL CURBSIDE WASTE GENERATION RATE
	GARBAGE	BLUE BOX*	ORGANICS	YARD WASTE		
Town of Aurora	99	78	76	38	2	293
Town of East Gwillimbury	78	71	74	38	<1	261
Town of Georgina	93	79	71	29	<1	272
Township of King	82	88	80	43	1	294
City of Markham	59	67	91	32	9	258
Town of Newmarket	83	75	73	38	<1	269
City of Richmond Hill	77	67	80	32	<1	256
City of Vaughan	88	65	83	31	<1	267
Town of Whitchurch-Stouffville	90	70	78	28	2	267
Overall Curbside Waste Generation Rate	77	69	83	33	3	265
2017 vs 2018	-1	-2	0	+2	+1	0

*Blue box generation rate not adjusted for contaminated loads



2031 TARGET
TOTAL WASTE
GENERATION RATE
289 kg
PER CAPITA

Total Waste Generation Rate (kg/capita)

CURBSIDE WASTE GENERATION	YORK REGION DEPOT WASTE GENERATION RATE		OTHER (YORK REGION TRANSIT, SCHOOL BOARDS, ROADS DEPARTMENT, N6 BIA)	TOTAL WASTE GENERATION RATE
	RESIDENTIAL	SMALL BUSINESS		
265	21	7	6	299

CURBSIDE WASTE TRENDS 2014-2018 (Kg/capita)

	2014	2015	2016	2017	2018	2014-2018 TREND
GARBAGE	82	80	78	78	77	↓
BLUE BOX	76	72	70	71	69	↓
ORGANICS	84	85	84	83	83	→
YARD WASTE	39	35	29	31	33	↓

PROGRAM UPDATES

The SM4RT Living Plan relies on partnerships with local municipalities and community organizations to leverage technology, skills and knowledge to drive successful program delivery.



REPAIR CAFÉ

York Region in partnership with local towns, cities, libraries and York Region Makers, give broken items new life at Repair Cafés. Seven events were hosted in 2018. 2019 plans include 14 events hosted by the Region or community partners, such as Markham Public Library and King Township.

287 PARTICIPANTS
OVER 200 ITEMS FIXED



FOOD WASTE

The award winning Good Food campaign has tips to help you plan and prepare meals, save time and money, eat healthy and waste less. The Region is exploring new partnerships in 2019.

**23 GOOD FOOD
OUTREACH EVENTS**
OVER 4,300 PEOPLE ENGAGED



MULTI-RESIDENTIAL

Building managers, superintendents and tenants reduced waste through reuse and recycling initiatives. Aurora's e-waste and battery collection pilot continues, Richmond Hill updated their development standards and Vaughan expanded collection services to more buildings in 2018.

**PROMOTION & EDUCATION
MATERIALS TO 19,745 UNITS**
**21,000+ UNITS SERVED
WITH 3-STREAM COLLECTION**



COMPOSTING

A backyard composter can divert approximately 100kg of food and yard waste per year leaving behind garden gold. In 2018, eight event days were held in partnership with local municipalities.

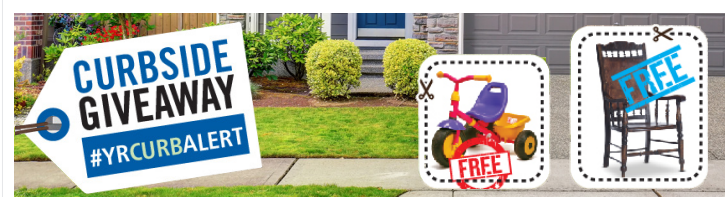
**911 BACKYARD
COMPOSTERS SOLD**
**91 TONNES OF
ORGANICS DIVERTED**



TEXTILES

Textile programs are offered in seven municipalities through donation bins, event days, community garage sales, and education campaigns. Aurora, Whitchurch-Stouffville and Newmarket established a new partnership to support their programs.

**165+ MUNICIPAL
COLLECTION BINS**
2,612 TONNES OF TEXTILES COLLECTED



CURBSIDE GIVEAWAY DAYS

A low-cost program that allows residents to place items no longer needed at the curb that neighbours can take for free! 2018 included new dates in Richmond Hill and East Gwillimbury. Common dates for June and October will continue in 2019.

37 EVENT DAYS
**MOST COMMON ITEM:
FURNITURE**



SCHOOL PROGRAMS

Regional and local municipal programs inspire and support elementary schools to reduce their waste and improve reuse and recycling efforts at school and at home.

**52 PRESENTATIONS
BY LOCAL MUNICIPALITIES**
4,000+ STUDENTS ENGAGED



BUSINESS PROGRAMS

A Waste Reduction Forum was held in Vaughan to educate and inspire businesses to reduce waste to achieve bottom line results.

47 BUSINESSES
**96% OF PARTICIPANTS
SATISFIED**



THE SINGLE MOST
IMPORTANT INFLUENCE
 THAT CAN CHANGE OUR
 ENVIRONMENTAL FUTURE
 IS YOU



2018 PARTNERS

Thank you to residents and partners for continued support and commitment to sustainable waste reduction programs.



SMART LIVING PLAN **BALANCED SCORECARD 2018**

