

ONTARIO HEALTH TEAMS IN YORK REGION

Katherine Chislett, Commissioner
Community and Health Services

Arden Krystal, President and CEO
Southlake Regional Health Centre

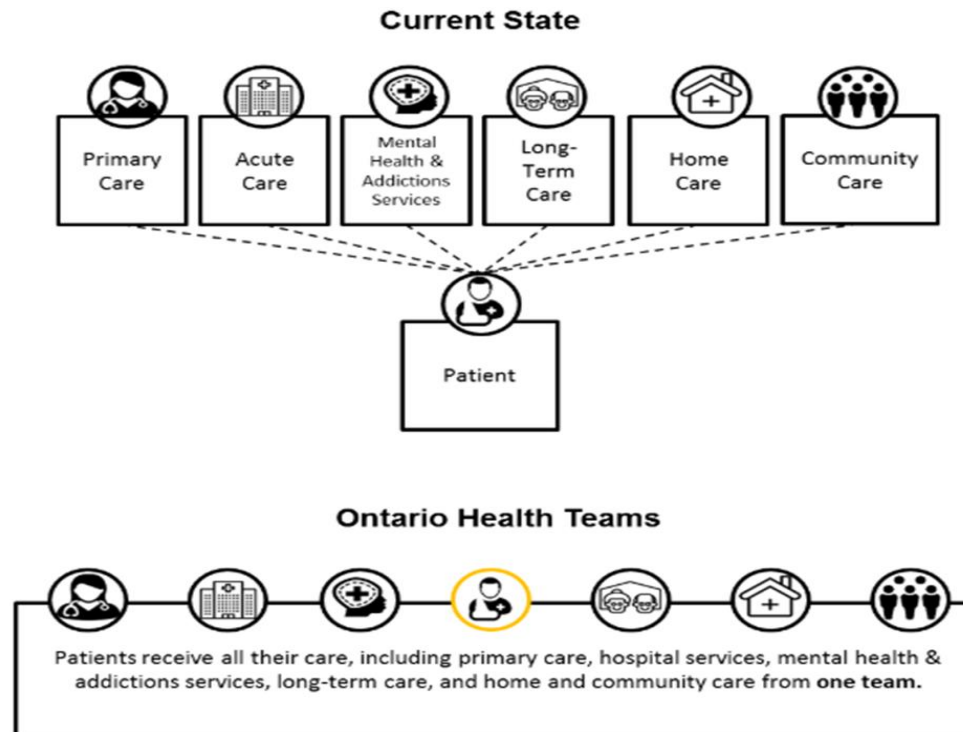


PURPOSE

- Overview of local health system changes
- Establishment of Ontario Health Teams
- York Region role on Ontario Health Teams
- Seek approval to participate as a partner on Ontario Health Teams in York Region

TRANSFORMATION OF LOCAL HEALTH CARE PLANNING








- The government campaigned on ending hallway healthcare as a top platform commitment
- Ontario's healthcare system is largely organized in silos, which often leads to duplication of services in some areas and underservice in others



WHAT IS AN ONTARIO HEALTH TEAM?

- Groups of providers and organizations that are clinically and fiscally accountable for delivering a full and coordinated continuum of care to a defined attributed population
- Over time, the province will be divided into a number of OHTs, each accountable for a specific set of patients
- Patient attribution to a specific OHT is based on where they receive primary care not geography
- At maturity, every resident in Ontario will be part of one OHT

ONTARIO HEALTH TEAMS AT MATURITY

-  Provide a full and coordinated continuum of care for an attributed population
-  Offer patients 24/7 access to coordination of care and system navigation services and work to ensure patients experience seamless transitions throughout their care journey
-  Be measured, report on and improve performance across a standardized framework linked to the 'Quadruple Aim' (better clinical outcomes, better patient experience, better provider satisfaction, better value)
-  Operate within a single, clear accountability framework
-  Be funded through an integrated funding envelope
-  Reinvest savings into front line care
-  Improve access to secure digital tools, including online health records and virtual care options for patients – a 21st century approach to health care

ONTARIO HEALTH TEAM CALL FOR PROPOSALS

- Ministry received 157 self-assessment submissions from across the province
- 31 of these submissions were invited to proceed with a full application
- Four team submissions in York Region
 - Three of these teams are proceeding to full application

PROPOSED SOUTHLAKE COMMUNITY ONTARIO HEALTH TEAM

Southlake Community
ONTARIO HEALTH TEAM

YEAR 1 PRIORITY POPULATION

- Older adults with complex needs and multiple comorbidities
- Adult mental health and addictions patients

AREA OF FOCUS (FOR BOTH PRIORITY POPULATIONS)

- Improved transitions from hospital to post-acute care
- Reduced admissions/ED visits by enhancing coordination with homecare, primary care and long-term care
- Primary care, community services and paramedic services collaborate to focus on the 'rising-risk' patient cohort
- Reduction in process/paperwork/non-clinical workload for primary care physicians
- Resource shifts from acute to community/primary care
- Improved communication and data sharing between partners

SOUTHLAKE COMMUNITY ONTARIO HEALTH TEAM PARTNERS

PARTNERS

- Aurora-Newmarket Family Health Team
- Bayshore HealthCare
- CMHA York Region / South Simcoe
- CHATS
- Enhanced Care Medical Clinic
- Extendicare Inc.
- Georgina NP-Led Clinic
- LOFT Community Services
- SE Health
- Southlake
- Southlake Academic Family Health Team
- York Region – Community and Health Services

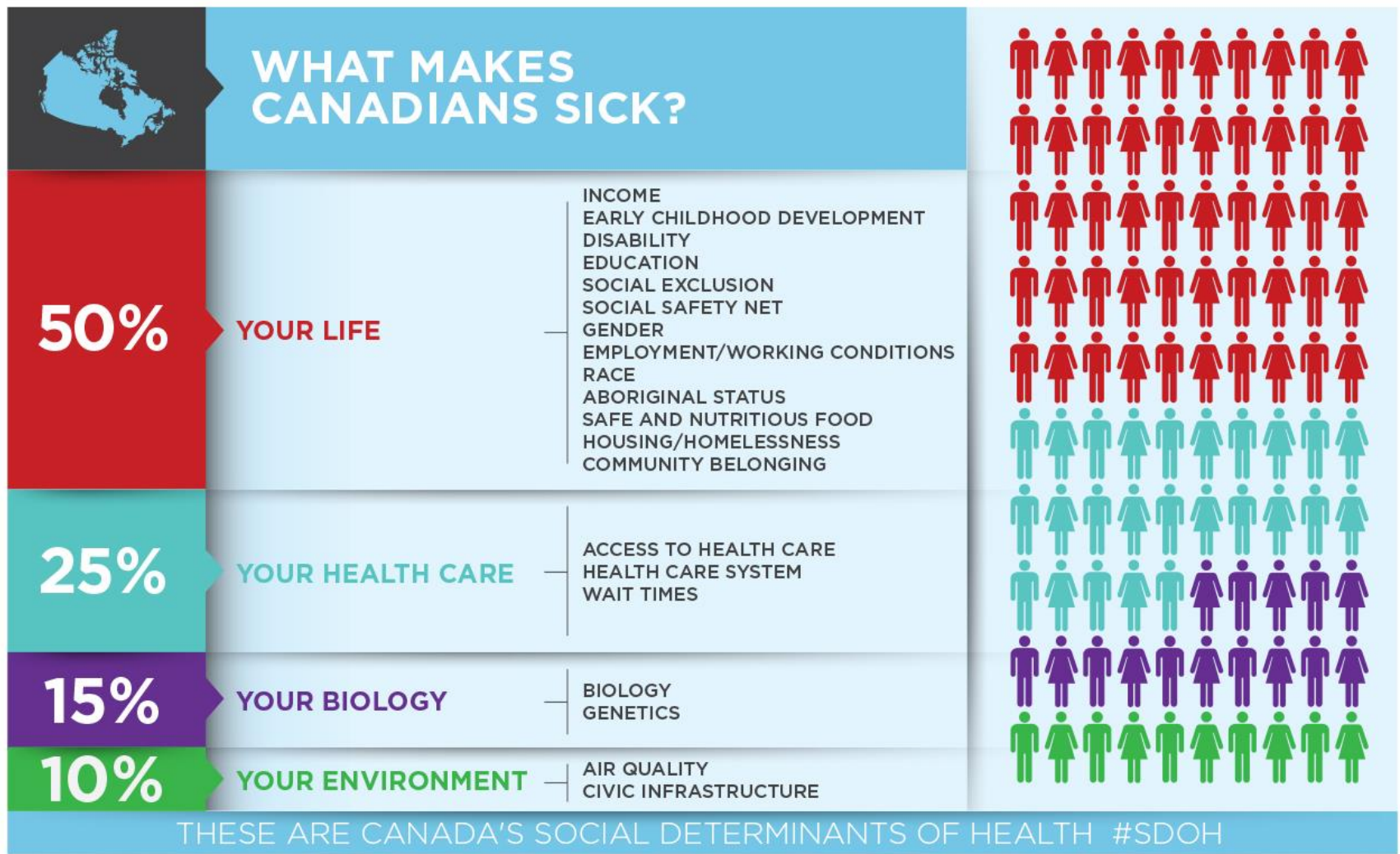
**Southlake Community
ONTARIO HEALTH TEAM**



PROPOSED ONTARIO HEALTH TEAMS IN YORK REGION

- Southlake Community OHT
 - Lead agency: Southlake Community Ontario Health Team
 - Proceeding to full application
- Eastern York Region and North Durham OHT
 - Lead agency: Markham Stouffville Hospital (Markham and Uxbridge sites)
 - Proceeding to full application
- Vaughan Community OHT
 - Lead agency: Addiction Services for York Region
 - Application in development
- Western York Ontario Health Team
 - Lead agency: Mackenzie Health
 - Proceeding to full application

IMPROVING THE WELLBEING OF YORK REGION RESIDENTS



NEW OPPORTUNITIES FOR YORK REGION

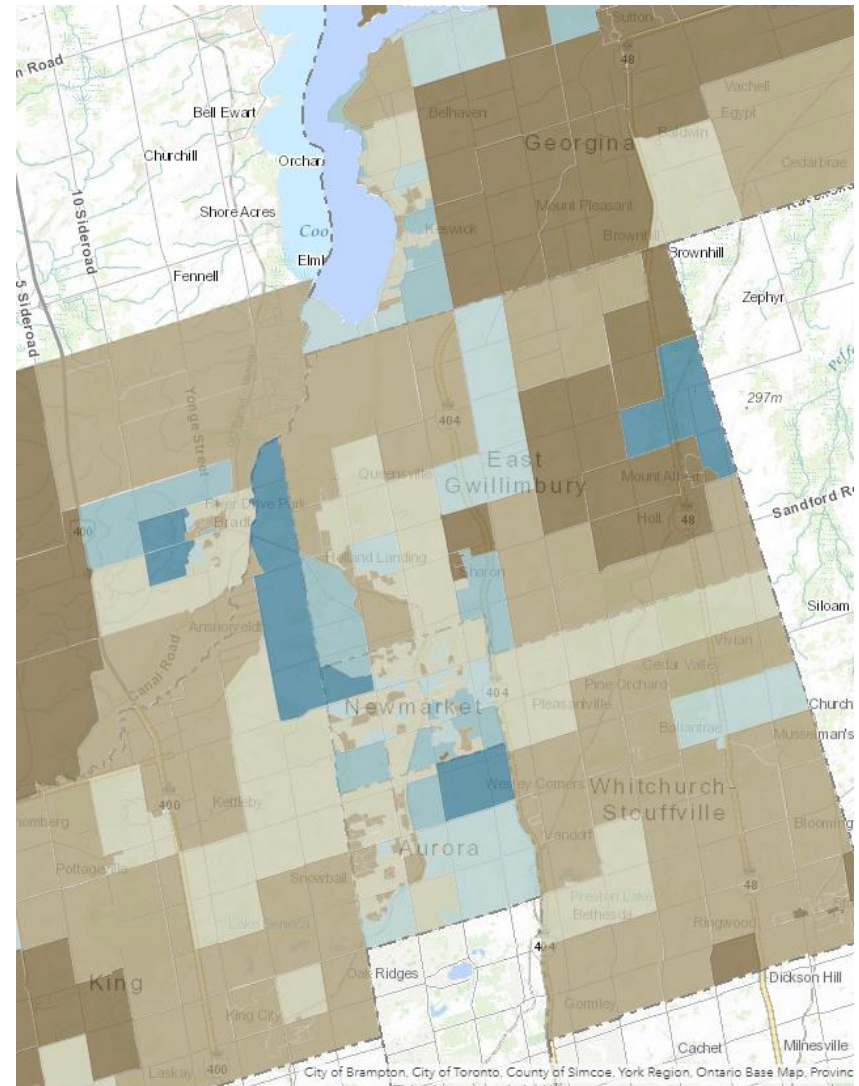
- Upscaling the Region's Community Paramedicine Program
- Virtual long-term care (supports at home)
- Co-location opportunities for services and programs between partners
- Progress on foundational elements like data sharing
- Admissions to Long Term care beds will be managed by Ontario Health Teams

RECOMMENDATIONS

1. Council approve York Region's participation as a partner in the full application stage for the following two Ontario Health Teams:
 - Southlake Community Ontario Health Team
 - Eastern York Region and Durham Ontario Health Team
2. Council authorize the Commissioner of Community and Health Services to sign agreements related to York Region's participation in Ontario Health Teams as deemed appropriate in the Commissioner's discretion
3. The Regional Clerk forward this report to Southlake Regional Health Centre and Markham Stouffville Hospital

YORK REGION LEADING THE PROVINCE IN GEOANALYTICS

- Southlake and York Region have been collaborating on an innovative geoanalytics platform
- Integrating hospital data (utilization, operational, cost) with homecare data and social determinants of health data into one unified web-based tool.
- The platform is getting significant interest at the Ministry and Ontario Health.



THANK YOU

For more information
Katherine Chislett
Commissioner
Community and Health Services
Katherine.Chislett@york.ca
1-877-464-9675 ext. 72023

