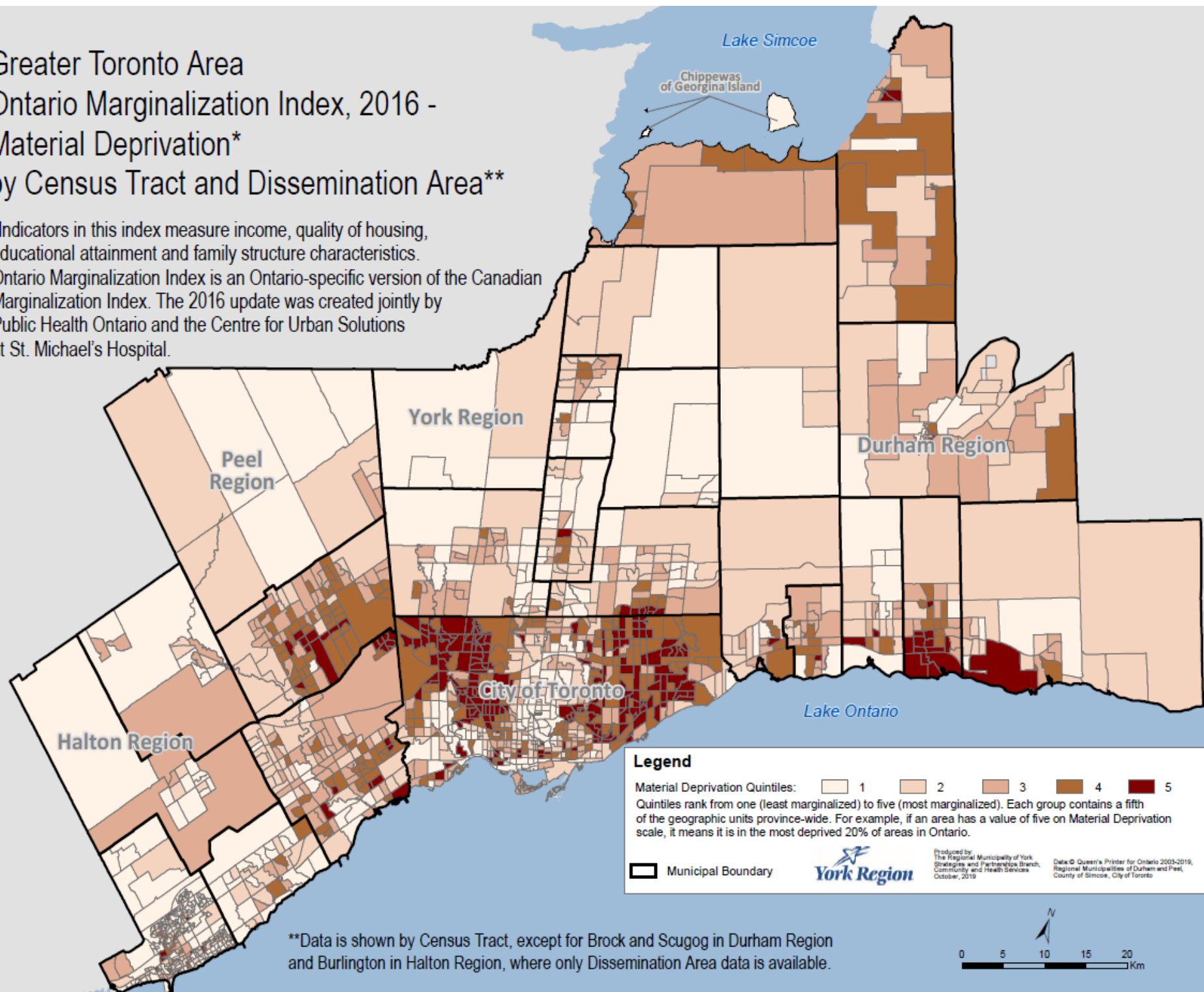


Greater Toronto Area Ontario Marginalization Index, 2016 - Material Deprivation* by Census Tract and Dissemination Area**

*Indicators in this index measure income, quality of housing, educational attainment and family structure characteristics. Ontario Marginalization Index is an Ontario-specific version of the Canadian Marginalization Index. The 2016 update was created jointly by Public Health Ontario and the Centre for Urban Solutions at St. Michael's Hospital.



**Data is shown by Census Tract, except for Brock and Scugog in Durham Region and Burlington in Halton Region, where only Dissemination Area data is available.