

# COMMUNITY SAFETY AND WELL-BEING

## Project Updates

**Joseph Silva**, Director

Strategies and Partnerships  
Community and Health Services

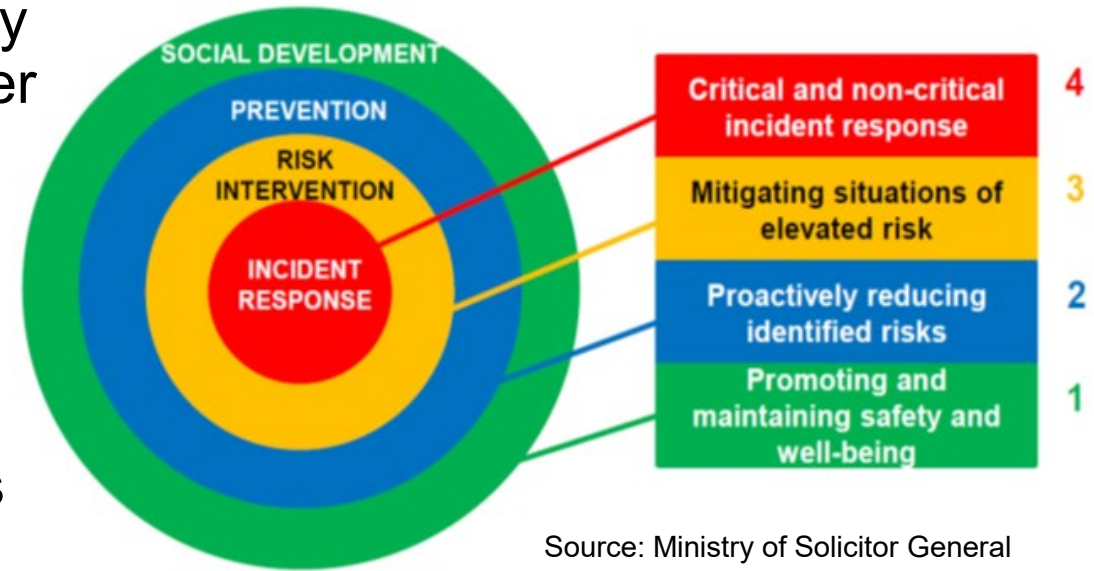
October 18, 2019



# Work on preparing a Community Safety and Well-Being Plan for York Region is underway

York Region must prepare and adopt a community safety and well-being plan (the Plan) by December 31, 2020 per *Police Services Act, 1990*

- Collaborative approach focused on social development, prevention, and leveraging community strengths
- Required to prioritize risks, develop strategies and measurable outcomes, and engage with specified partners
- Human Services Planning Board (Board) is the advisory committee, and has been providing valuable support and insight
- Regional staff have been conducting research and have started to collect and analyze data



# The Board's input has helped to evolve our approach

- Key themes emerged from Board and working group meetings over the last few months:
  - Plan should address unique and changing community needs
  - Residents should be engaged about priority issues in their communities, and what they might need to address those issues
- We obtained a better understanding of risks and factors contributing to them
- We gained a stronger appreciation for taking a place-based approach to augment the usual higher level strategic approach that Community Safety and Well-Being plans use



# We have refined the risk categories that will guide the development of the Plan



# We propose taking a place-based approach

- Approach would build on and inform the development of broader plans
- Provides opportunities to apply and learn from outcomes of targeted actions



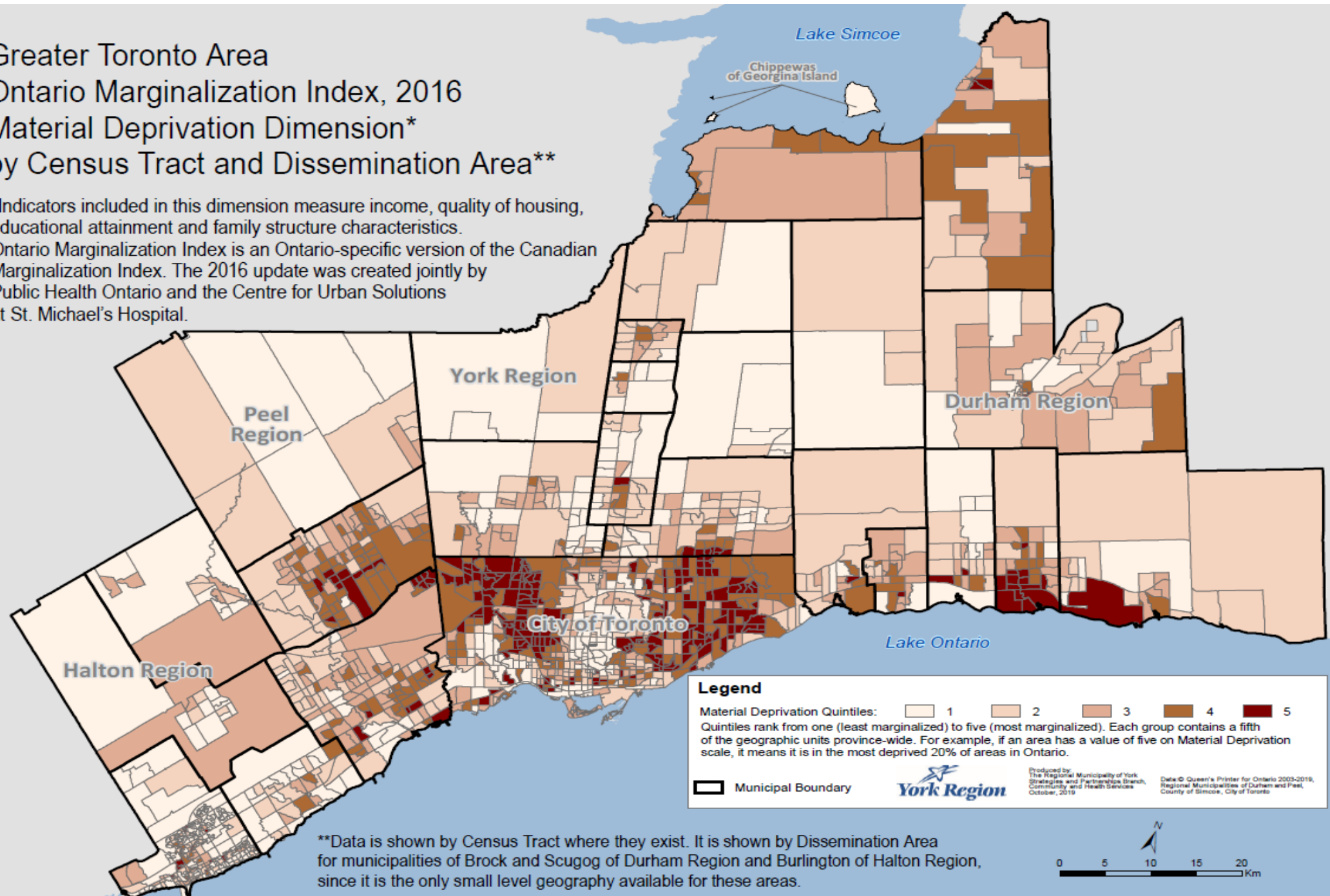
# Research on place-based approach shows mostly positive benefits but there are concerns that can be mitigated

Benefits	Concerns
Effectiveness	Potential stigma
Efficiency	Takes time to show results
Community	Resourcing



# Greater Toronto Area Ontario Marginalization Index, 2016 Material Deprivation Dimension\* by Census Tract and Dissemination Area\*\*

\*Indicators included in this dimension measure income, quality of housing, educational attainment and family structure characteristics. Ontario Marginalization Index is an Ontario-specific version of the Canadian Marginalization Index. The 2016 update was created jointly by Public Health Ontario and the Centre for Urban Solutions at St. Michael's Hospital.



# Next Steps

- Obtain your feedback and confirm your endorsement of augmenting York Region's Community Safety and Well-Being Plan with a place-based approach
- Report to Regional Council in November 2019, seeking approval of augmenting with a place-based approach
- Pending Council decision, decisions to be made in consultation with local municipalities on the place-based communities
- Community engagement in those communities anticipated to begin in early 2020; Board will be involved
- Report back to Board and Council on outcomes of community engagement, and identification of the specific risk(s) to be addressed in each community Q2 or Q3 2020
- Recommend Community Safety and Well-Being Plan for Council approval late 2020
- Implement the Plan starting Q1 2021



# Discussion and Questions

# Thank you

**Joseph Silva**, Director  
Strategies and Partnerships, Community and Health Services  
[joseph.silva@york.ca](mailto:joseph.silva@york.ca)

