

Development of the Community Safety and Well-Being Plan for York Region

Committee of the Whole
November 7, 2019

Joseph Silva
Director, Strategies and Partnerships
Community and Health Services



PURPOSE

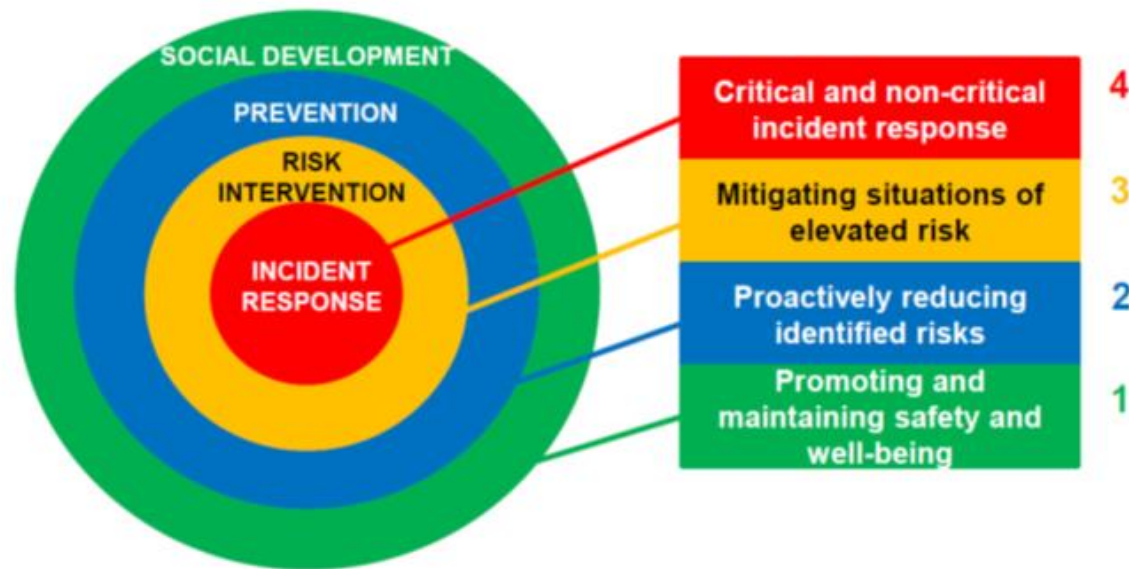
- Provide overview of community safety and well-being planning
- Seek approval to take a place-based approach to prepare a Community Safety and Well-Being Plan for York Region
- Seek authorization for Commissioner of Community and Health Services to determine initial areas for targeted engagement



WHAT WE MUST DO

Prepare and adopt a community safety and well-being plan by December 31, 2020 as required by *Police Services Act, 1990*

- Collaborative approach focused on social development, prevention, and leveraging community strengths
- Required to identify and prioritize risks, identify strategies and measurable outcomes, and engage specified partners, including an Advisory Committee (Human Services Planning Board of York Region)



WORK UNDERWAY TO PREPARE A COMMUNITY SAFETY AND WELL-BEING PLAN

Background Research

Literature Review
Jurisdictional Scan
Initial Data Collection and Analysis

Engagement

Subject Matter Experts (including York Regional Police)
Human Services Planning Board of York Region

POTENTIAL RISKS

**Alcohol and
Substance
Misuse**

Crime

**Employment
and Income**

Discrimination

**Education and
Development**

Mental Health

**Social
Isolation**

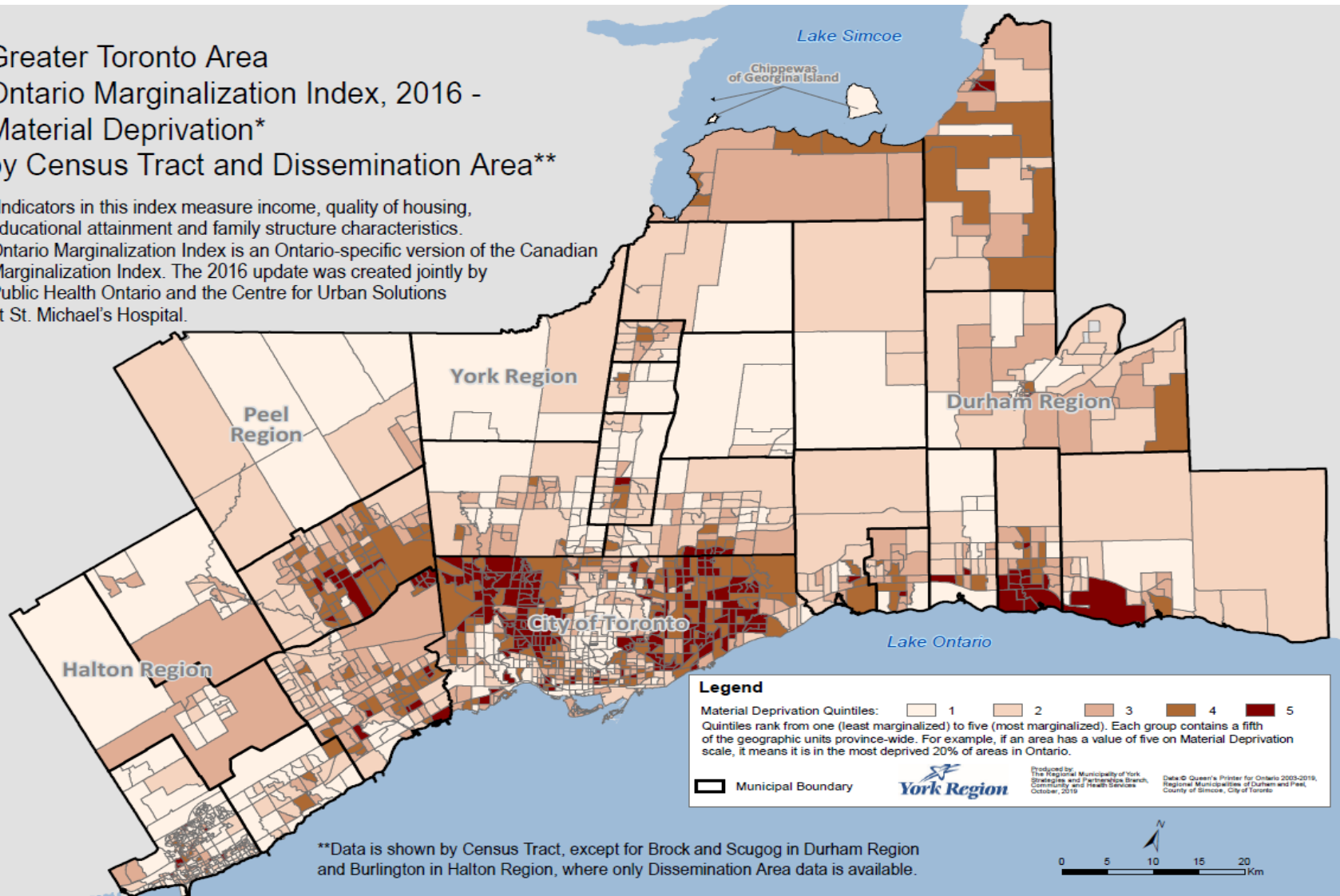
**Housing
Stability**

**Physical
Health**

YORK REGION COMPARED TO THE GTA

Greater Toronto Area Ontario Marginalization Index, 2016 - Material Deprivation* by Census Tract and Dissemination Area**

*Indicators in this index measure income, quality of housing, educational attainment and family structure characteristics. Ontario Marginalization Index is an Ontario-specific version of the Canadian Marginalization Index. The 2016 update was created jointly by Public Health Ontario and the Centre for Urban Solutions at St. Michael's Hospital.



PROPOSED APPROACH

- Opportunity to build on and inform development of broader plans
- Opportunity to apply and learn from outcomes of targeted actions
- Human Services Planning Board of York Region endorses place-based approach



PLACE-BASED APPROACH CONSIDERATIONS

Benefits
Effectiveness
Efficiency
Community

Concerns
Potential stigma
Takes time to show results
Resourcing

PROPOSED NEXT STEPS

- Targeted community engagement – Early 2020
- Report back to Council – Q2-Q3 2020
- Submit to Council for adoption – Late 2020
- Begin Implementation – Q1 2021

RECOMMENDATIONS

- Council approve a place-based approach to prepare a Community Safety and Well-Being Plan for York Region
- Council direct Commissioner of Community and Health Services to determine initial areas for engagement based on data and undertake targeted consultations to identify and develop possible strategies to reduce risks to community safety and well-being
- Council direct Commissioner of Community and Health Services to report back to Council on the outcomes of consultations

QUESTIONS AND DISCUSSION

THANK YOU

For more information

Joseph Silva, Director, Strategies and Partnerships
Community and Health Services

Joseph.Silva@york.ca

